



# 'Missing Middle' Housing



[www.olympiawa.gov/missingmiddle](http://www.olympiawa.gov/missingmiddle)

Leonard Bauer, Deputy Director  
Community Planning & Development  
lbauer@ci.olympia.wa.us

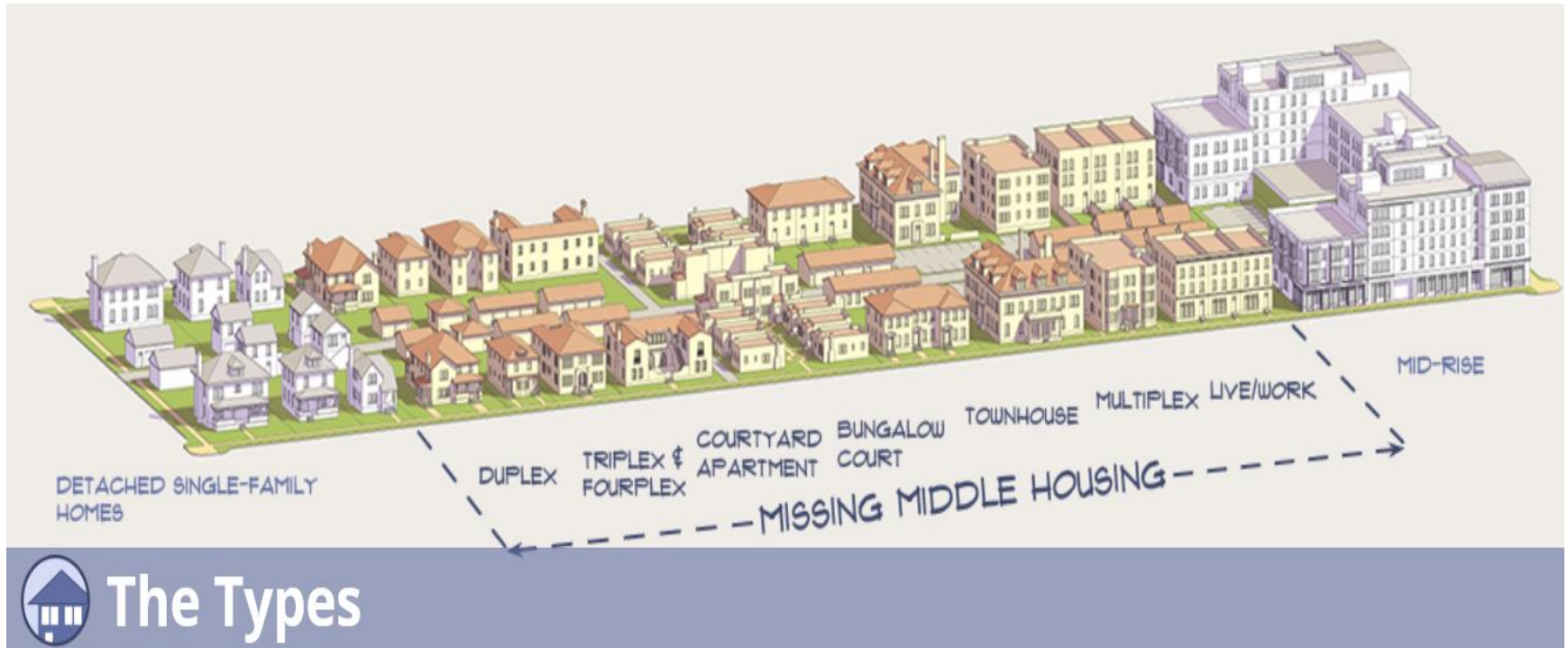


# What Is Missing Middle Housing?

“A range of multi-unit or clustered housing types compatible in scale with single-family homes”

- *MissingMiddleHousing.com*

# What Is Missing Middle Housing?



Source: [MissingMiddleHousing.com](http://MissingMiddleHousing.com)

# What Is Missing Middle Housing?

Olympia™



# What Is Missing Middle Housing?

Olympia™





# What Is Missing Middle Housing?

Olympia™





# What Is Missing Middle Housing?

Olympia™





# Why Missing Middle Housing?

- Allows more choices of housing types
- More affordable than traditional single-family homes
- Smaller household/family size trends
- Increase neighborhood density – ‘gently’
  - More walkable neighborhoods
  - Viability of small-scale neighborhood businesses
  - Supports transit
- Can provide income to current homeowners to allow them to remain in neighborhoods





# Olympia Households

- In 2010, Olympia + urban growth area had about 26,000 housing units:
  - 57% single-family homes
  - 39% multi-family (shared wall) units
  - 4% manufactured homes
  - 50% owner-occupied, 50% rental units
- By 2015, 52% of Olympia households were rentals
- By 2035, an estimated 13,000 additional housing units will be needed



# Olympia Households

In 2010, Olympia averaged 2.2 persons per household (pph)

- Down from 2.5 pph in 1970
- 48.6% were one-person or non-family households
- 21.8% were couples with no children (2-person household)
- Only 14.4% of households were couples with children

Source: *The Profile*, Thurston Regional Planning Council



# Olympia Comprehensive Plan

**Goal GL 16: The range of housing types and densities are consistent with the community's changing population needs and preferences.**

PL 16.2: Adopt zoning that **allows** a wide variety of compatible housing types and densities.

PL 16.5: Support affordable housing throughout the community by minimizing regulatory review risks, time and costs and removing unnecessary barriers to housing, by permitting small dwelling units accessory to single-family housing, and by allowing a mix of housing types.

**Goal GS 3: Affordable housing is available for all income levels throughout the community.**

PS 3.1 Promote a variety of residential densities and housing types so that housing can be available in a **broad range of costs**.

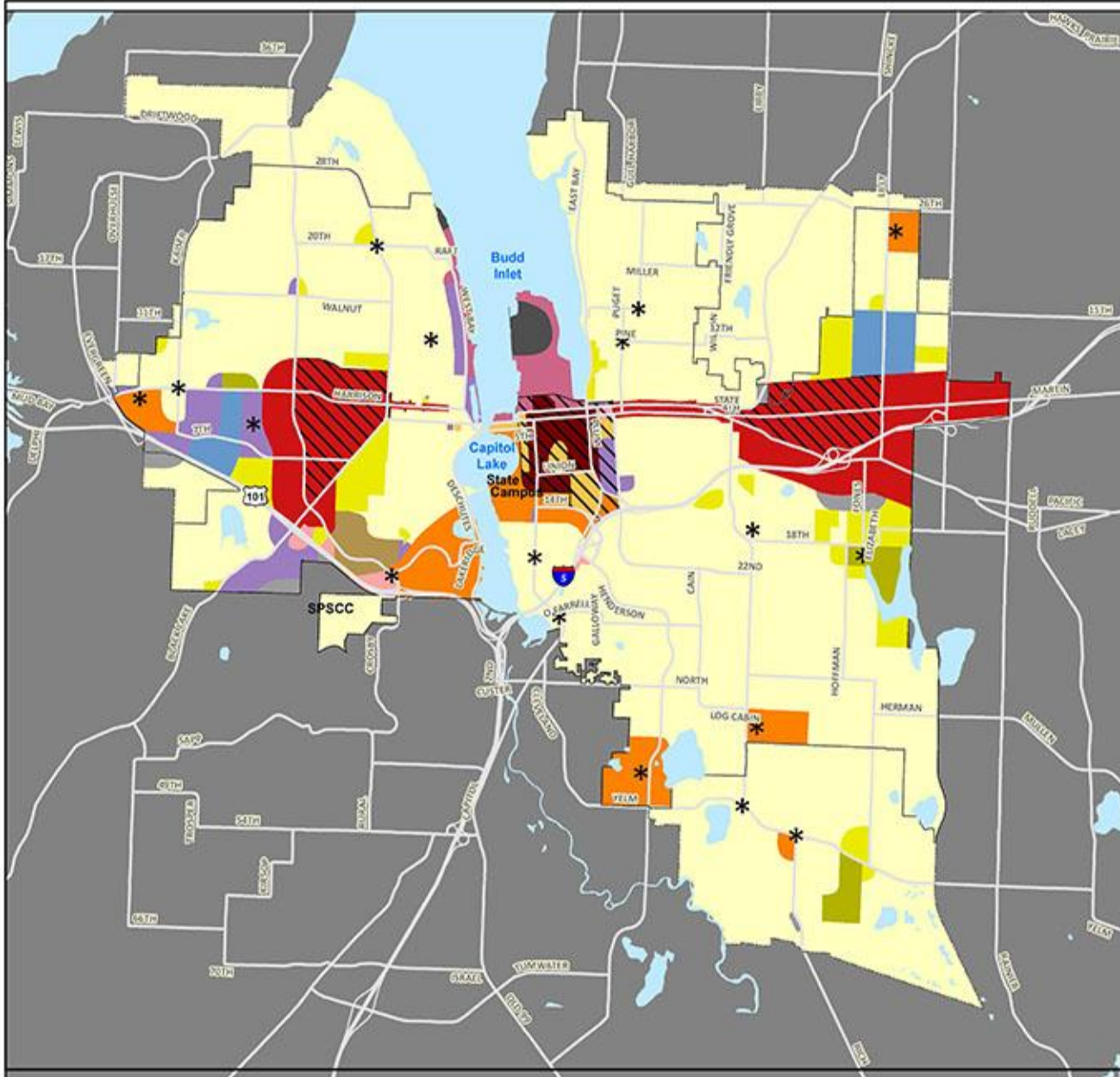
*(Note: These goals also include other associated policies; the most applicable to this project are included above).*

# Future Land Use

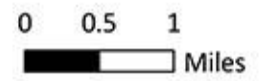
January 1, 2016

Publication Date: 12/17/2015 Effective Date: 1/1/2016

Ordinance #: 6987



-  High Density Neighborhoods Overlay
-  Low Density Neighborhoods
-  Medium Density Neighborhoods
-  Mixed Residential
-  Neighborhood Centers
-  Residential Mixed Use
-  Planned Developments
-  Professional Office & Multi-family Housing
-  Urban Corridor
-  Urban Waterfront
-  Central Business District
-  General Commerce
-  Auto Services
-  Medical Services
-  Light Industry
-  Industry
-  City Limits
-  Urban Growth Area



The City of Olympia and its personnel cannot accept the accuracy, completeness, reliability, or validity of this information for any particular purpose. The parties, right of way, utilities and structures depicted herein are based on record information and aerial photos only. It is recommended the recipient use or avoid land use information prior to use. The use of this data for purposes other than those for which they were created may yield inaccurate or misleading results. The recipient may not have any proprietary rights to this information. The City of Olympia and its personnel neither accept nor assume liability or responsibility.



# Missing Middle Work Group

## Purpose

“Review Olympia’s codes, standards, policies and fees for their impacts on the physical and financial feasibility of building ‘missing middle’ infill housing in areas designated in the Olympia Comprehensive Plan for low-density residential housing.”

- *Missing Middle Work Group Charter*



# Missing Middle Housing Issues

## Neighborhood Compatibility

- Zoning regulations – where allowed, size and intensity
- Design guidelines
- Off-street parking requirements

## Building/Construction

- Tiny homes
- Fire sprinklers
- Permit review fees

## Utilities/Transportation

- General Facilities Fees (aka, hook-up fees), impact fees
- Frontage improvements



# Missing Middle Housing Analysis

For each type of Missing Middle housing, would a changed approach to each issue increase:

- Affordability?
- Variety of housing types?
- Ability to accommodate future growth?



# Missing Middle Housing Analysis

## 14 Issue Papers:

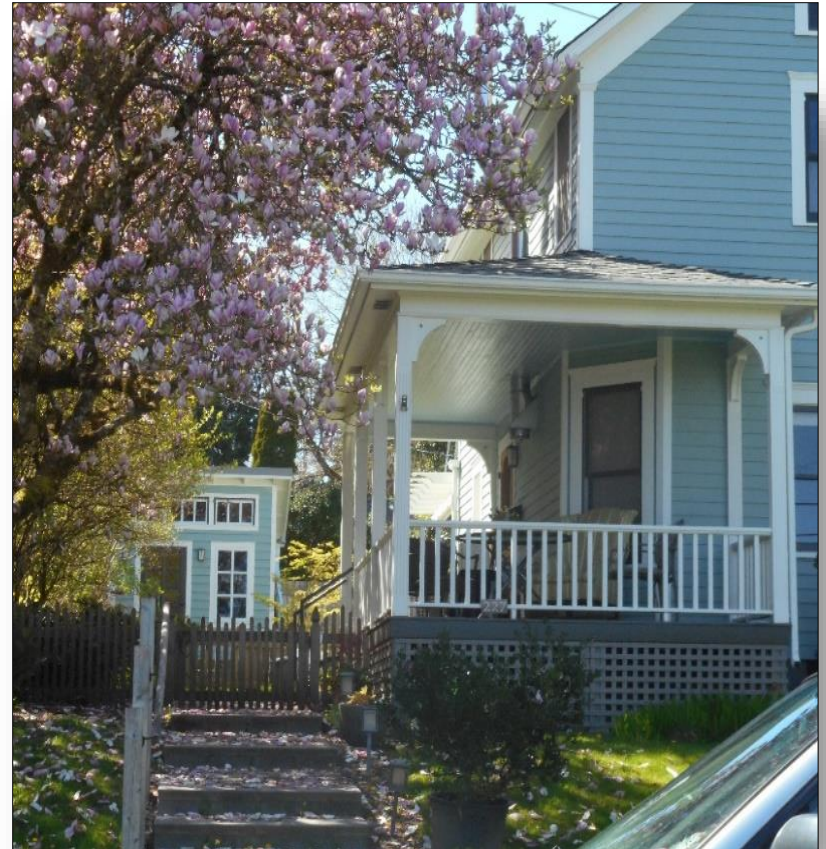
- Current Olympia approach and its intent
- Alternative approaches – other cities, ideas from work group, open house, public comments
- Analysis against the three criteria



# Draft Recommendations

## Accessory Dwelling Units (ADUs)

- No longer require owner to live on-site
- For detached ADUs, increase height limit from 16' to 24' to allow above-garage units (retain 35' for primary house and attached ADUs)
- Allow ADUs to be manufactured housing construction
- Remove requirement for additional parking space (2 required for primary house)



# Draft Recommendations

## Duplex, Triplex & Fourplex

- Permit in some areas if meet zoning density limits (see map)
- Apply same lot size/width requirements as single-family homes
- Apply Infill Housing Design Standards



# Draft Recommendations

## Cottage Housing

- Increase density bonus from 20% to 50%
- Decrease maximum size of cottages from 1600 s.f. to 1250 s.f.
- Allow for phasing of construction with an approved master plan

## Courtyard Apartments

- Permit in some areas if meet zoning density limits (see map)
- Limit to one story in some areas, two stories in other areas
- Apply Infill Housing Design Standards



# Draft Recommendations

## Townhouses

- Remove requirements for larger setbacks and 4 or less units per structure

## Single-Room Occupancy Housing

- Allow in limited areas if meet zoning density limits (see map) up to two stories
- Allow shared cooking and/or bathroom facilities
- Apply Infill Housing Design Standards





# Draft Recommendations

## Tiny Houses

- Clarify allowed as stand-alone or in small groups as co-housing if meet building codes

## General Recommendations

- Conduct study of impact fees and hook-up fees - smaller housing types have different impacts?



# Missing Middle Housing – Next Steps

- Open house (November 15)
- Public survey (November 15-30)
- Question & Answer sessions (December 11 & 13)
- Planning Commission review and public hearing (Nov. 2017 – Feb. 2018)
- City Council consideration (Feb. - March 2018)

[www.olympiawa.gov/missingmiddle](http://www.olympiawa.gov/missingmiddle)