



Olympia Parks, Arts & Recreation

June 3, 2019



Parks

- ❖ 48 Parks
- ❖ 23 Miles of Trails
- ❖ 1,342 Acres
- ❖ 2,536 Stewardship Volunteers



Arts

- ❖ 121 Pieces of Public Artwork
- ❖ 25,629+ Attendees at two Arts Walk Events
- ❖ 18,095 Votes for Traffic Box Art



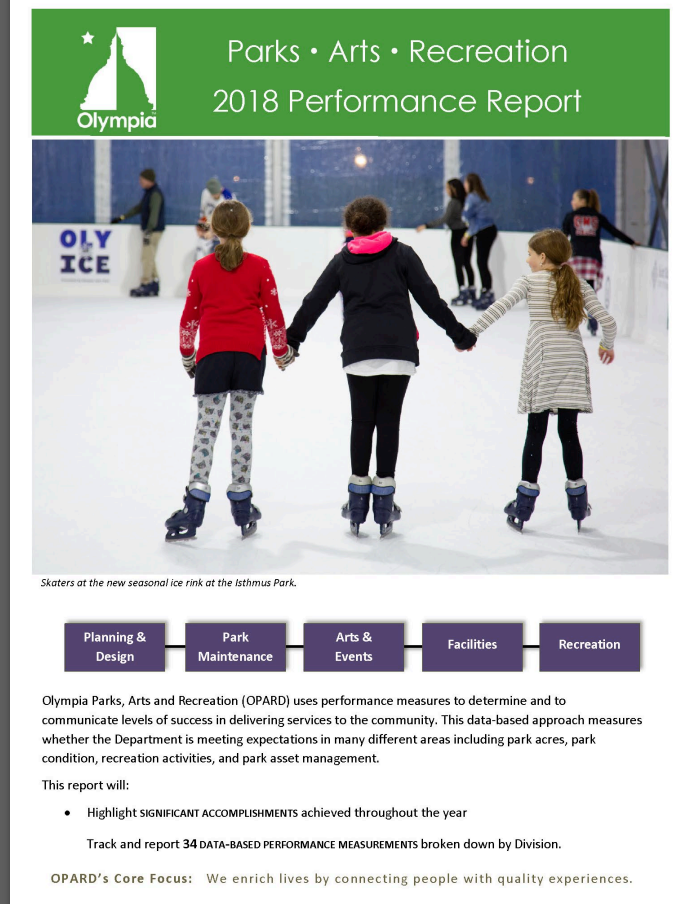
Recreation

- ❖ 2,571 Summer Camp Participants
- ❖ 278,672 Hours of Participation in Recreation Activities
- ❖ 8,050 Summer Nutrition Meals Served
- ❖ 134 Garden Plots Reserved
- ❖ 661 Outdoor Adventure Camp Participants



Action Plan & Performance Report

- ❖ Performance Measurements
- ❖ Snapshot of OPARD's Progress and Highlights



Parks Planning & Design - What We Do

COMMUNITY VISION



CAPITAL FACILITIES PLAN

PLANNING

Land Acquisition



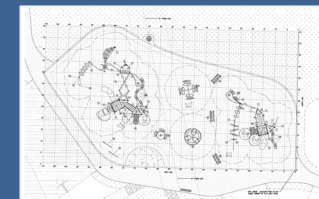
Master Plans



CAMP & ADA



PROJECT DESIGN

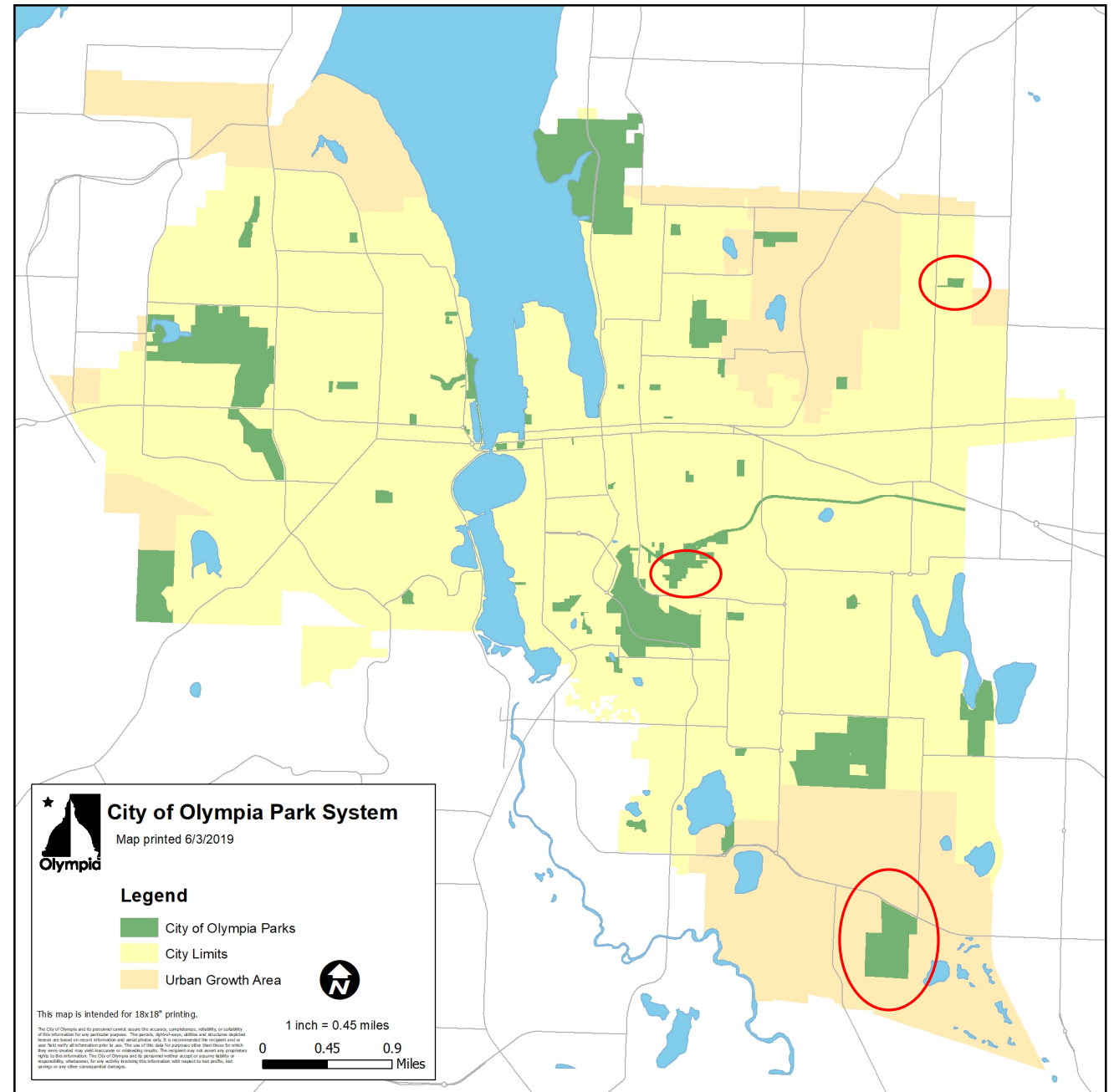


CONSTRUCTION



Land Acquisition - 2018

- ❖ 83 acres – Yelm Hwy parcel
- ❖ 12.5 acres – Woodland Trail parcels
- ❖ 5 acres – Lilly Rd. parcel



Isthmus Interim Park Improvements

❖ *Completed Summer 2018*

❖ *Allows for flexible use*



Ice Rink and Pump Track at Isthmus Park



Margaret McKenny Playground

- ❖ *Playground Installation*
- ❖ *Pathway Improvements*



Stevens Field #1

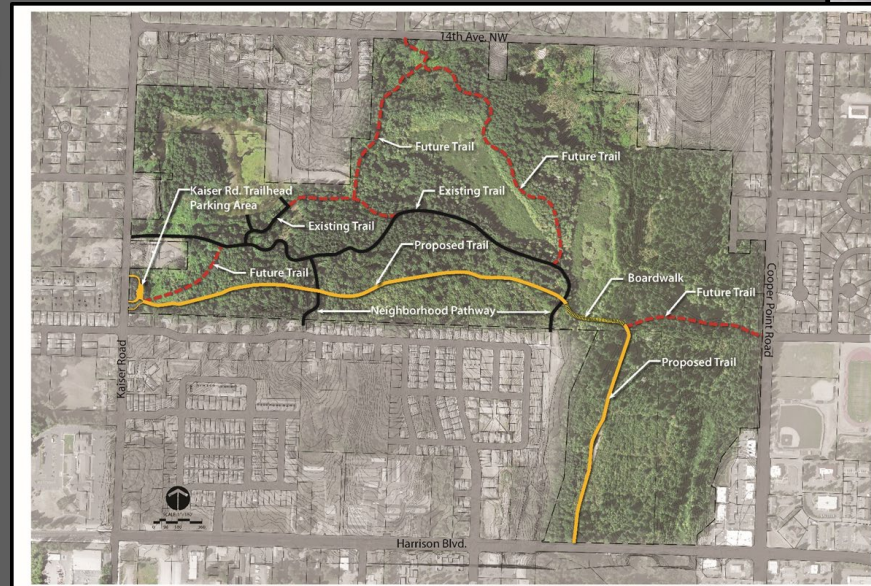
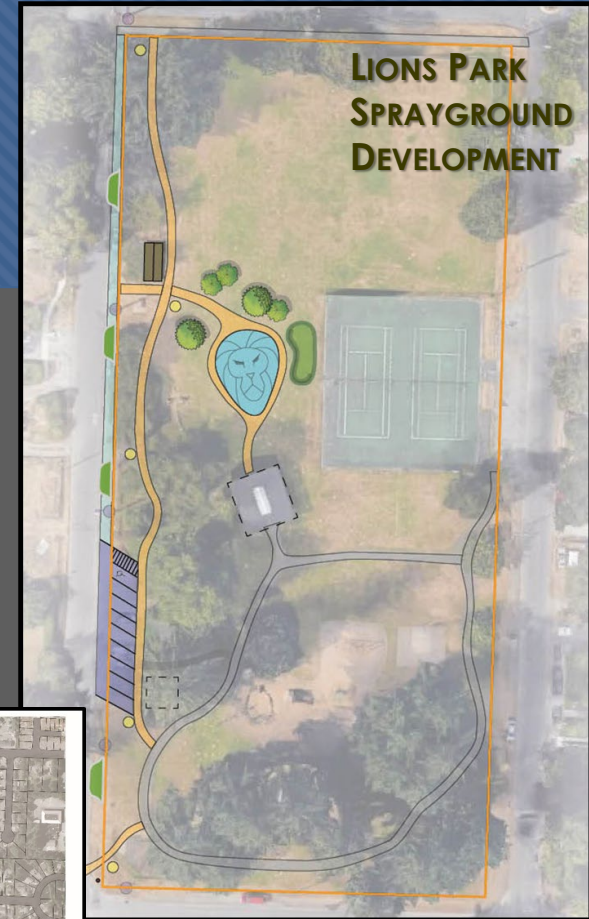
❖ *Synthetic Infield*

❖ *LED Lights*



2019 RCO Grants Received

- ❖ LBA Woods (Bentridge parcel)-- \$1M Acquisition
- ❖ Lions Park Sprayground -- \$500,000
- ❖ Stevens Field #2 -- \$350,000
- ❖ Grass Lake Nature Park Trail -- \$428,000



Percival Landing Bulkhead

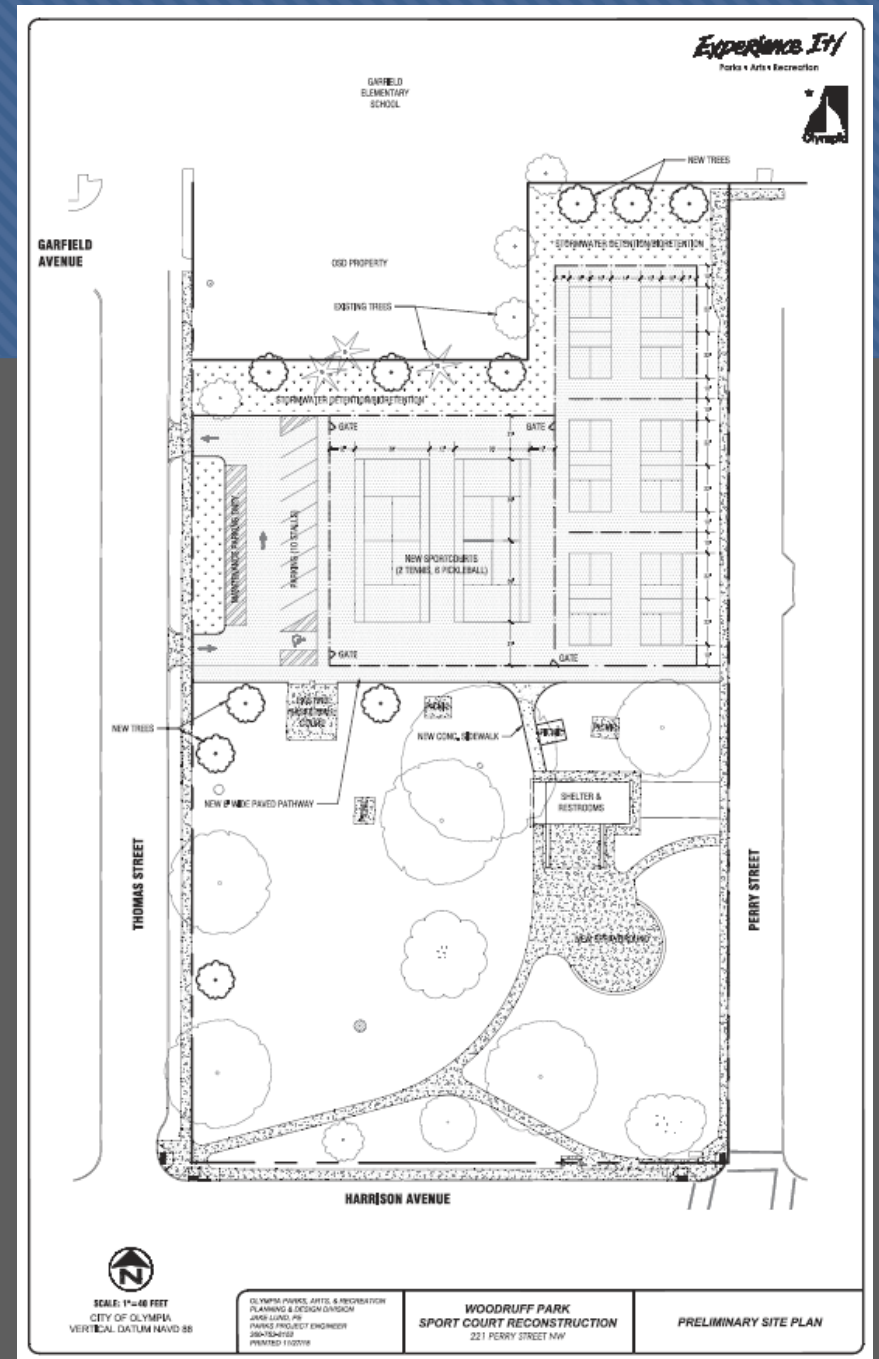


Woodruff Sprayground – Opening June 2019



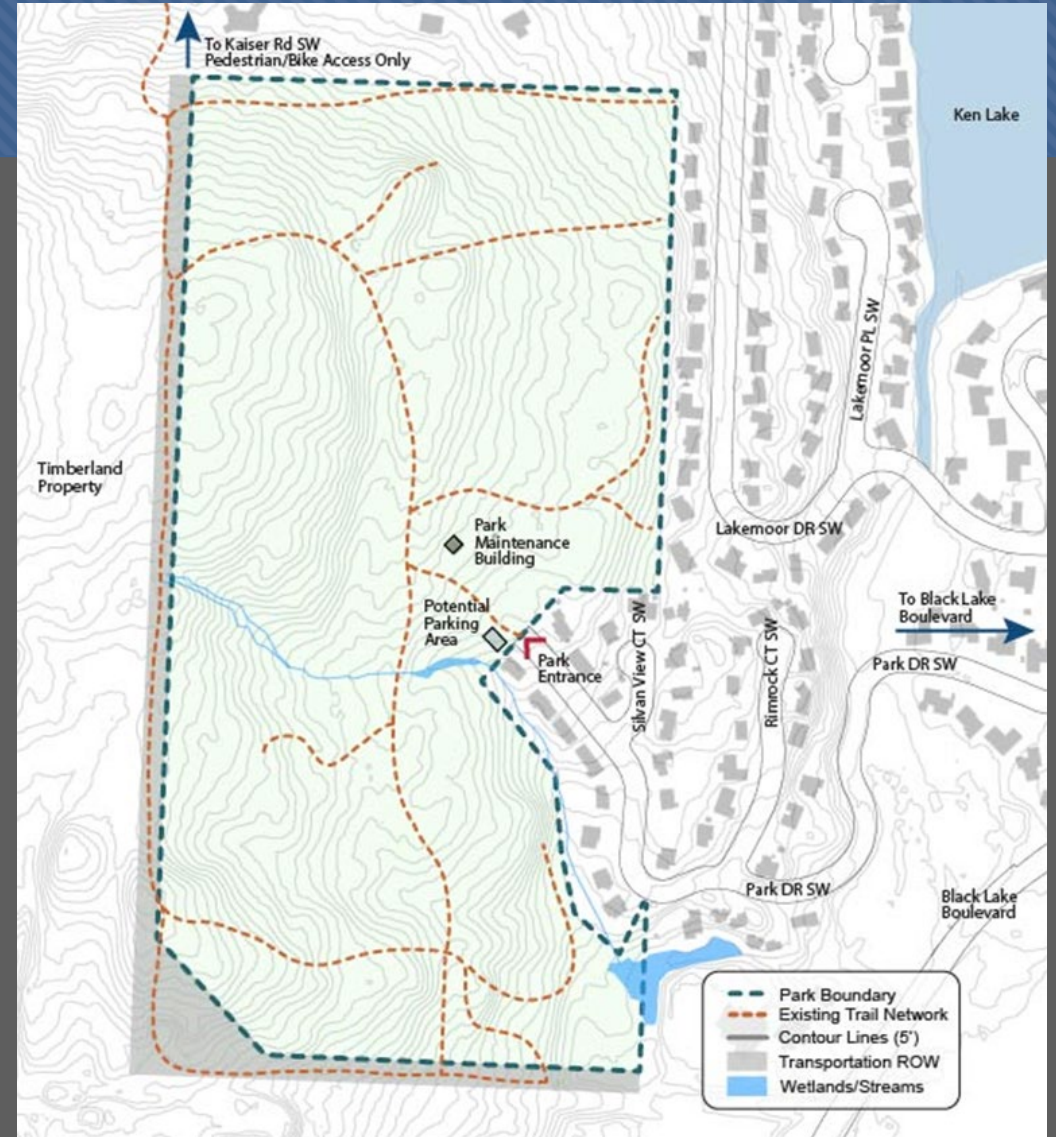
Woodruff Park

- ❖ 2 Tennis Courts & 6 Pickleball Courts
- ❖ Construction: Fall/Winter 2019, final surfacing Spring 2020



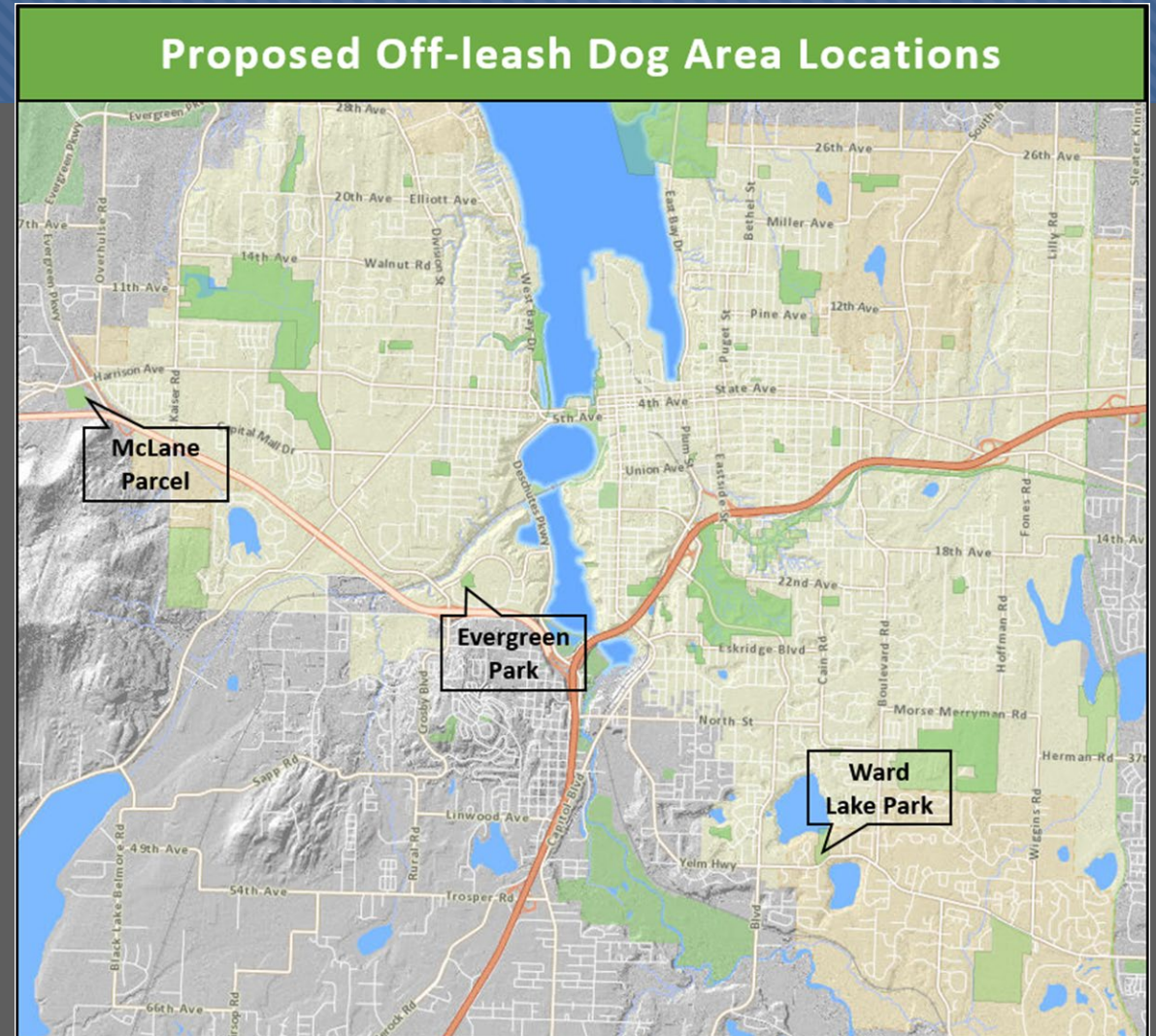
Kaiser Woods

- ❖ 68 acres, purchased 2016
- ❖ ~575 survey responses, 198 signed-in at public meeting
- ❖ www.engage.olympiawa.gov



Off-leash Dog Areas

- ❖ Online Survey– 1,100 responses!
- ❖ 3 Locations across the city
- ❖ www.olympiawa.gov/dogparks



Upcoming Planning Projects

- ❖ *Yelm Hwy Community Park Master Plan*
- ❖ *LBA Woods Trail Improvements*
- ❖ *Aquatic Center Feasibility Study*



Parks, Arts & Recreation E-newsletter



❖ *Subscribe at:*

olympiawa.gov/subscribe

