



Equity Index and Service Equity Analysis Briefing

Utility Advisory Committee
May 3, 2023



Agenda

Equity Index

- Partners
- What it is and what it shows
- Why did we create it

Stormwater Risk Index

- Indicators

Service Equity Analysis

- Regional Environmental Education Partnership data
- Next steps

Partners

Thurston County

City of Tumwater

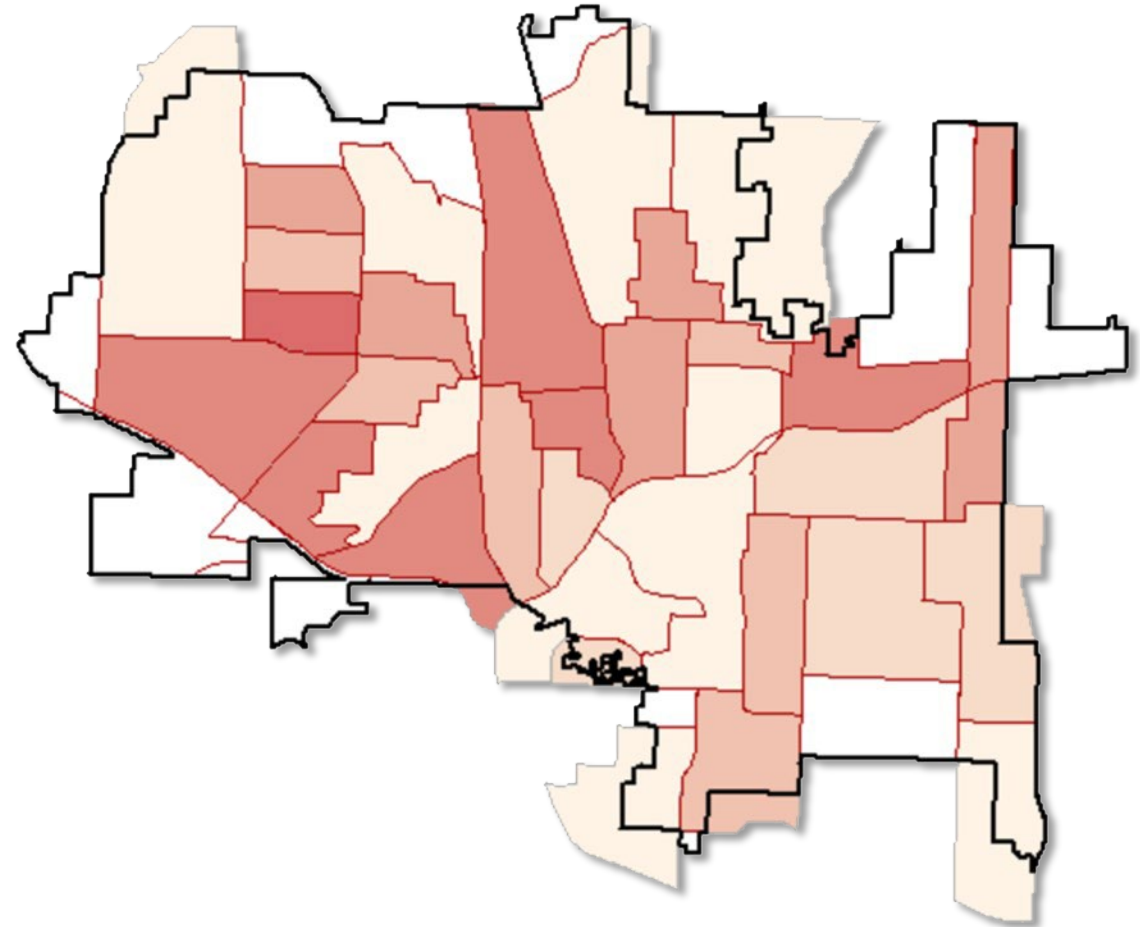
University of Washington's Action Mapping Project (AMP)



What is an Equity Index?

The Equity Index is an interactive mapping tool which:

- Uses spatial data sets to display levels of burden across the city by census block.
- Includes 5 metrics that form the Index framework.
- Includes 21 indicator datasets aligned with the framework metrics (no demographics).



A) An index composed of -> B) Indicators (spatial datasets) that are organized by -> C) Metrics (categories)

5 Metrics

Environment

Education

Walkability

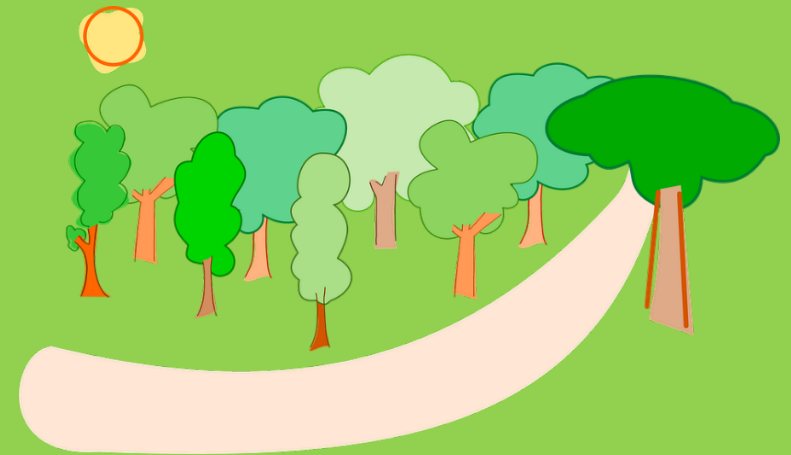
Economic
Stability

Livability

Indicators

- Percent of Land w/in 200 ft of high traffic road
- Canopy cover
- Percent of land w/in 1 mile of toxic site or spill
- Impervious surface cover

Environment



Indicators

- Housing costs
- Homeownership rate
- Lead risk from housing
- Condition of housing

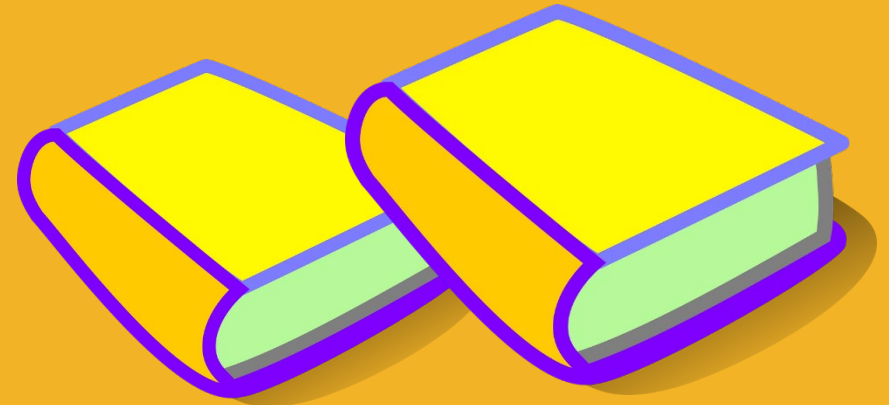
Livability



Indicators

- Percent of residents with less than a high school degree
- Percent of residents with any college degree
- Percent of low-income elementary students
- Student-teacher ratio
- Percent of high school students in dual enrollment programs

Education



Indicators

- Poverty rate
- Median household income
- Unemployment rate
- Percent using:
 - SNAP
 - Food stamps
 - Cash assistance

Economic Stability



Indicators

- Percent of residential parcels within 1 mile of bus stop
- Percent of residential parcels within 1 mile of grocery store
- Percent of residential parcels within 1 mile of library
- Percent of residential parcels within 1 mile of park or natural area

Walkability

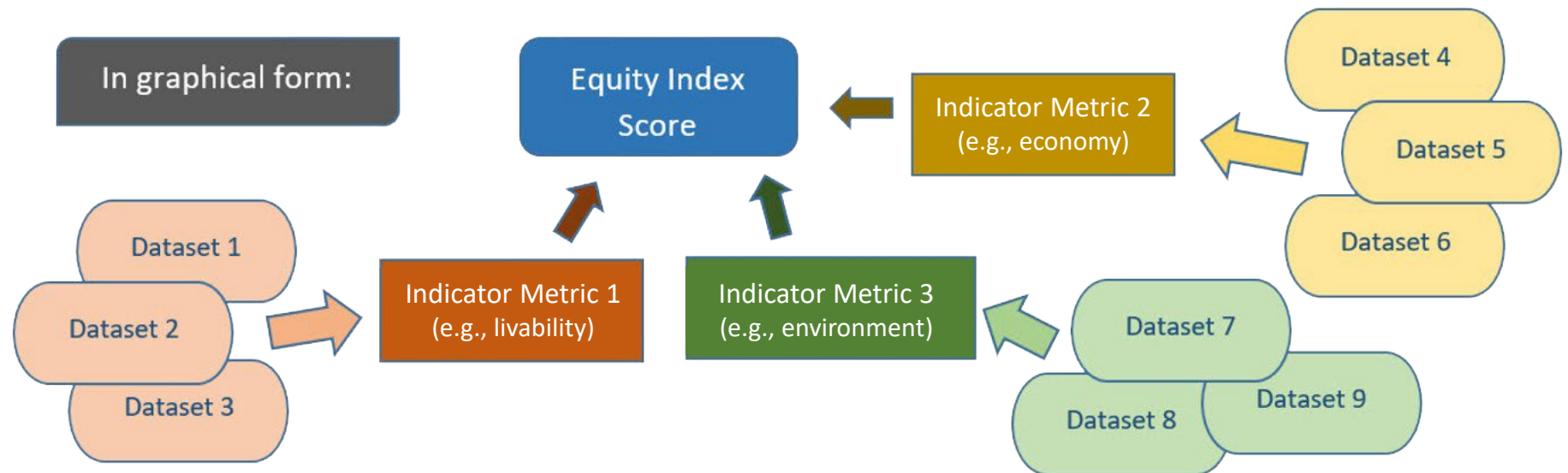


Data Sources

- Local – Olympia School District
- Regional – Thurston Regional Planning Council
- State – Washington State Department of Ecology
- Federal – U.S. Census, American Community Survey
- Data from 2019, 2020, and 2021

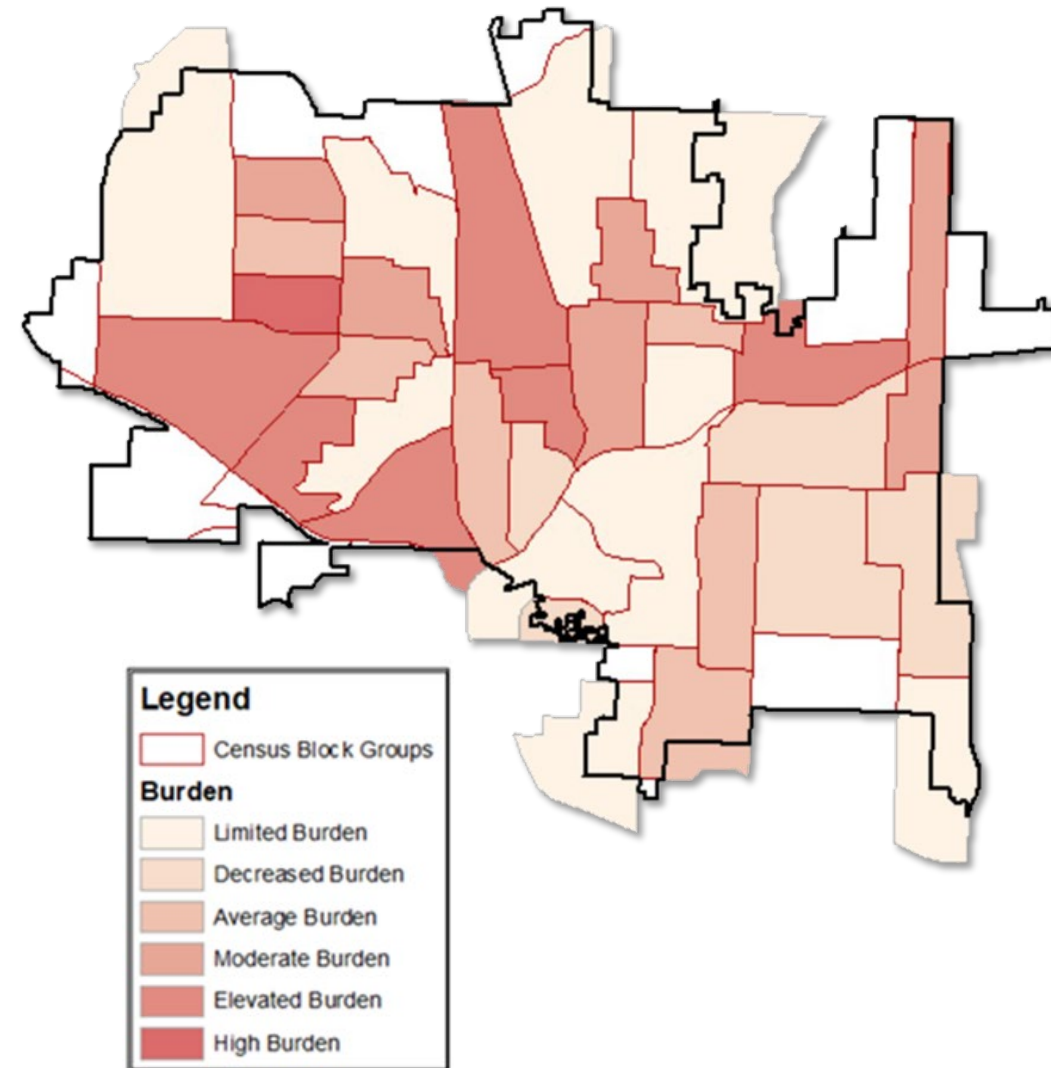
Methodology

- Each dataset normalized using a Z-score
- Each Z-score assigned a Z-classification
- Composite scores are given to each metric
- Metric scores are aggregated into an overall composite score for each census block group



Visualization

- A higher score (darker colors) indicate areas where people experience higher to moderate burden.
- A lower score (lighter colors) show areas where people experience limited or decreased burden.



Indicator Datasets

- Impervious surface cover
- Percent of parcels with structures in flood zone
- Percent of land area in flood zone
- Percent residential parcels
- Percent commercial parcels
- Percent industrial parcels

Stormwater Risk Index



Why Create an Equity Index?

- City and Community Priority
- Meet NPDES Permit Requirements
- Healthy Environment for All (HEAL) Act
- Identify Areas where People Experience Higher and Lower Levels of Burden
- Identify Service Equity Gaps
- Focus Efforts and Resources to Improve and Support Equitable Outcomes

Equity means all people, regardless of race, economic status, zip code, and other forms of personal and community identities, have access to resources, opportunities and decision-making processes that improve their quality of life, allowing them to reach their full potential and contribute to the cultural and economic vitality of Olympia.

Service Equity Analysis

Regional Environmental Education Partnership (REEP)

- City of Olympia
- City of Lacey
- City of Tumwater
- Thurston County

10 Years of Data Analyzed

- Participants
- Event locations
- Incentives
- Program costs



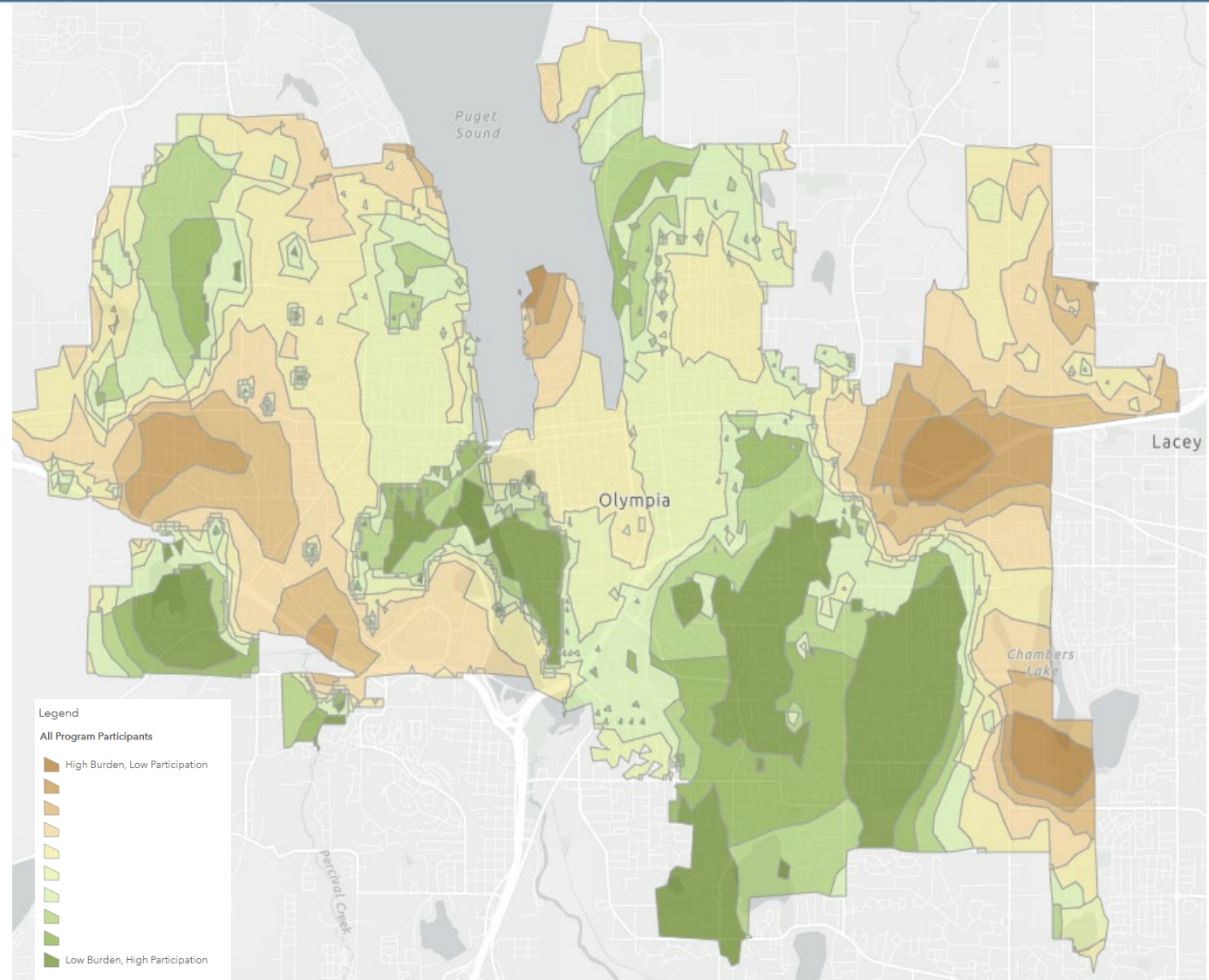


Analysis Results

All Program participants

- Dark green areas represent low burden, high participation.
- Dark brown areas represent high burden, low participation.

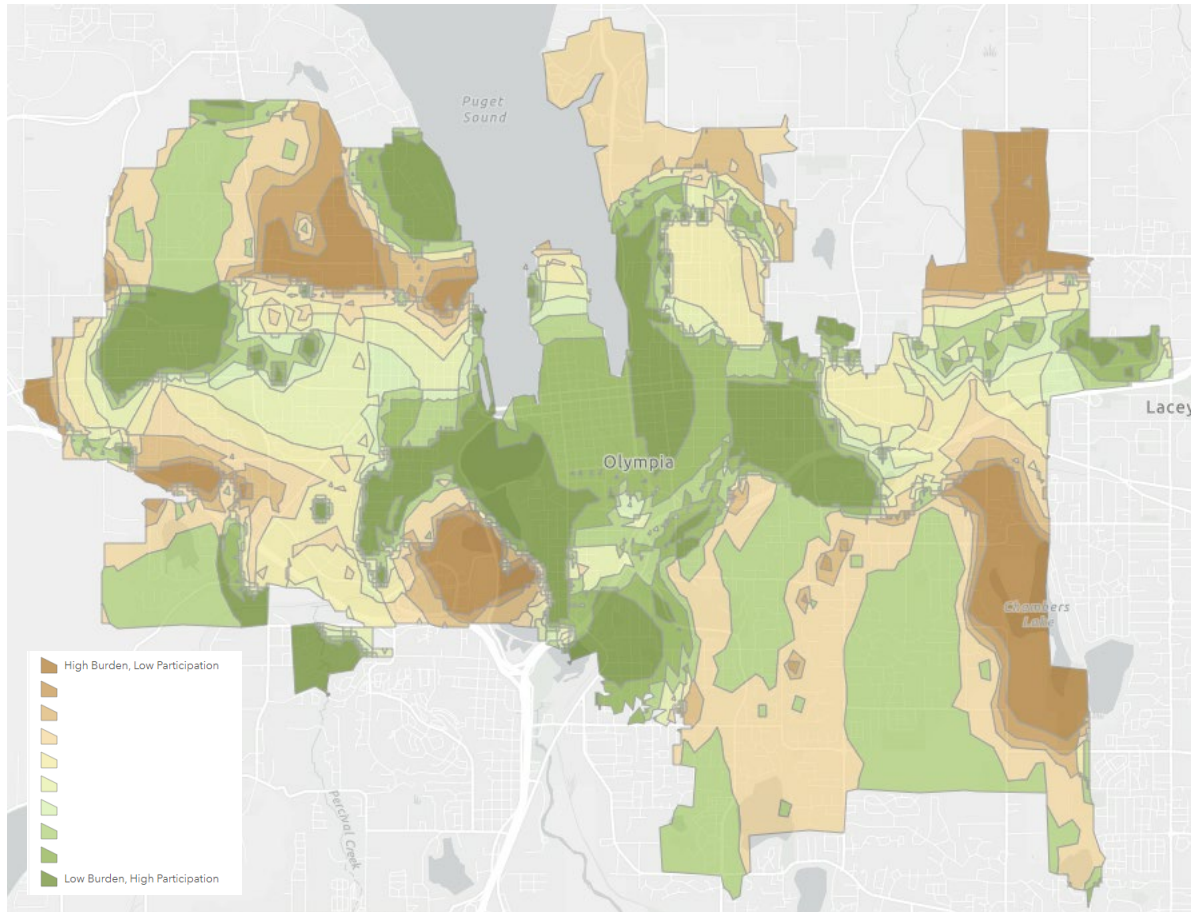
<https://olympiawa.maps.arcgis.com/home/webmap/viewer.html?webmap=5952ff50209647ec95b49e55cbe088ae>



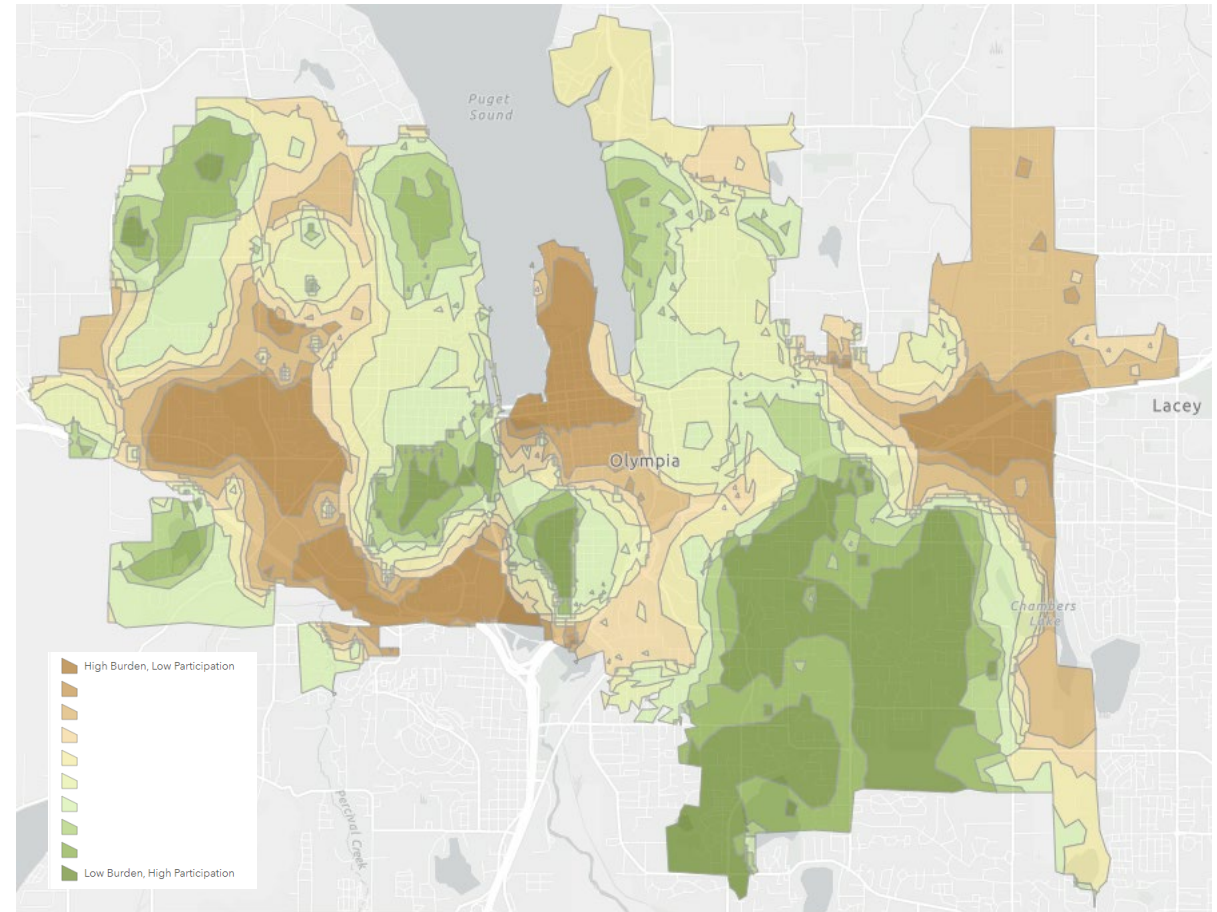


Analysis Results

Low-Cost Education Program Participants



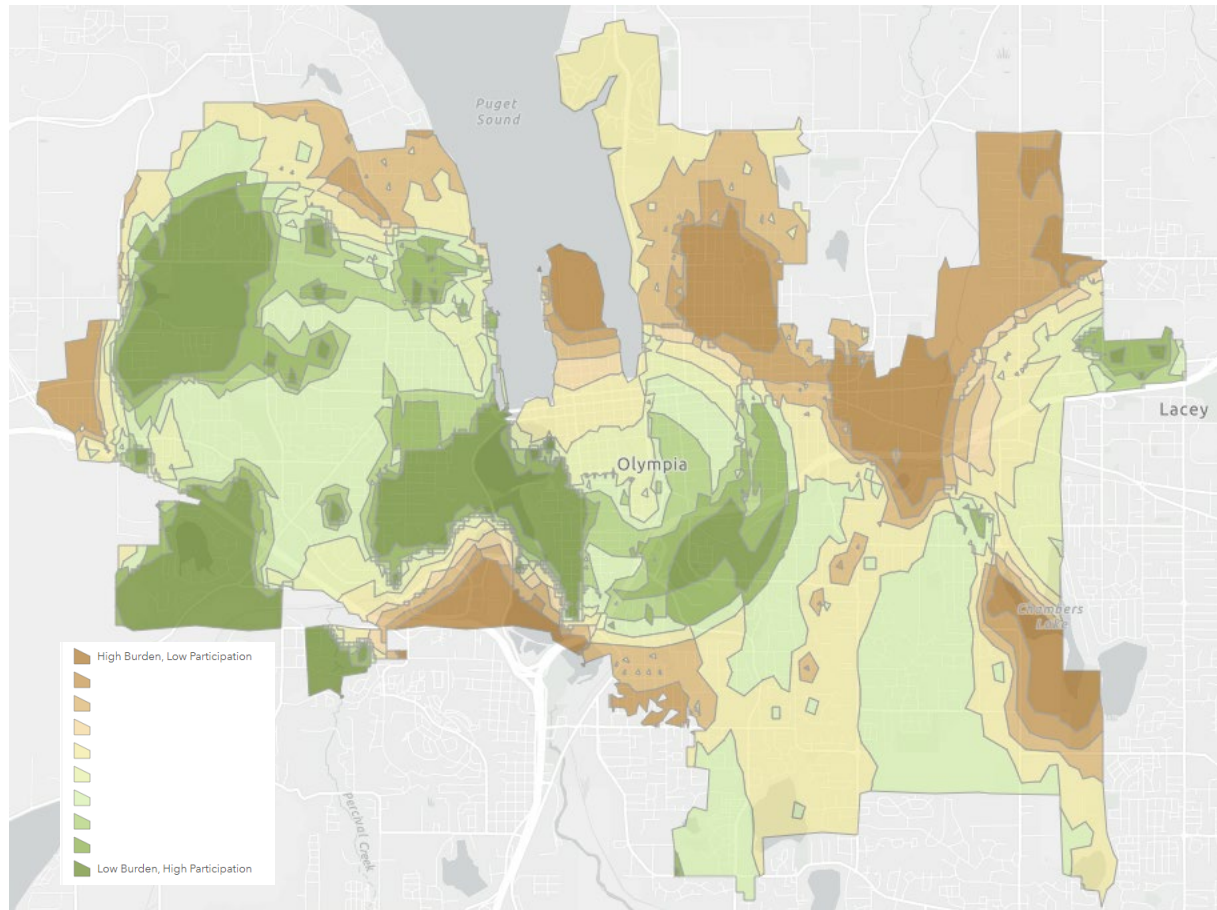
High-Cost Education Program Participants



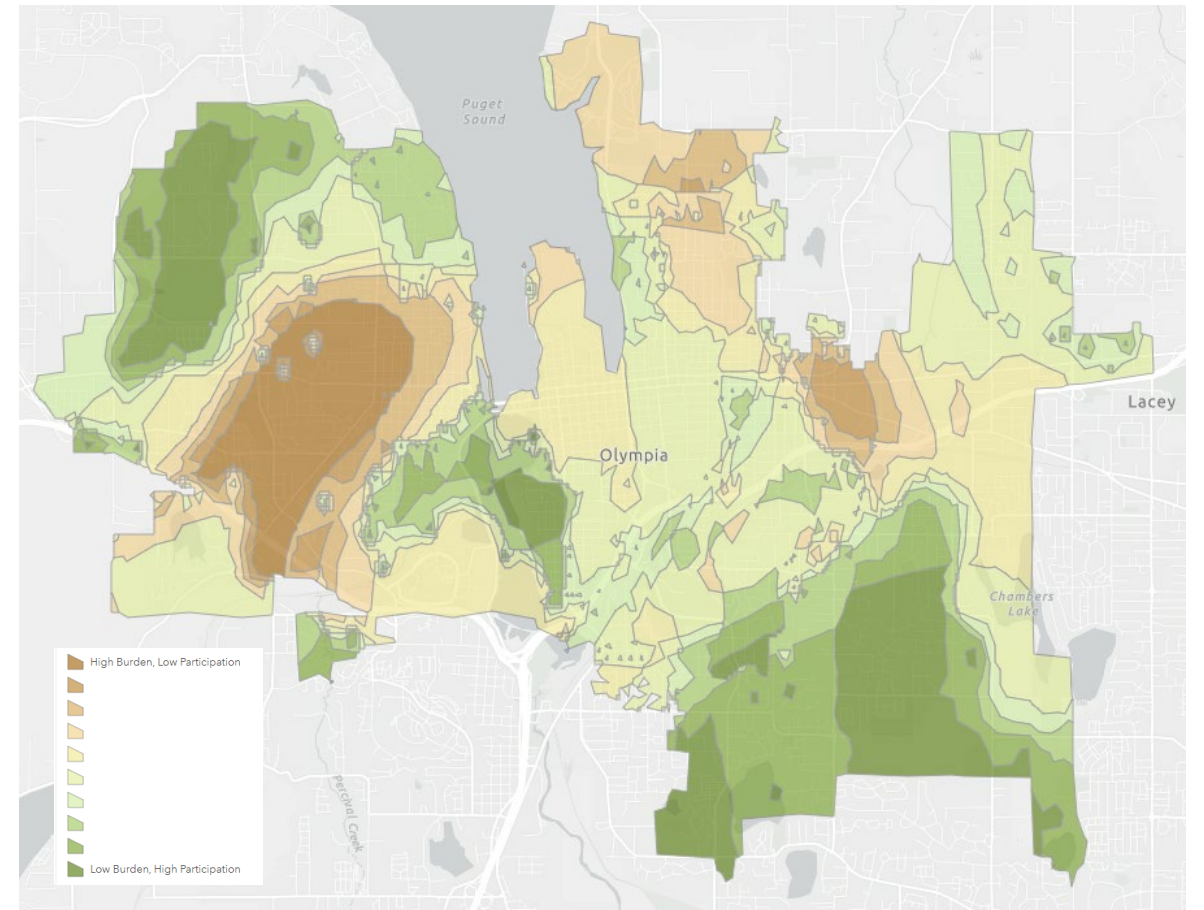


Analysis Results

Business Audience Program Participants



Neighborhood Audience Program Participants





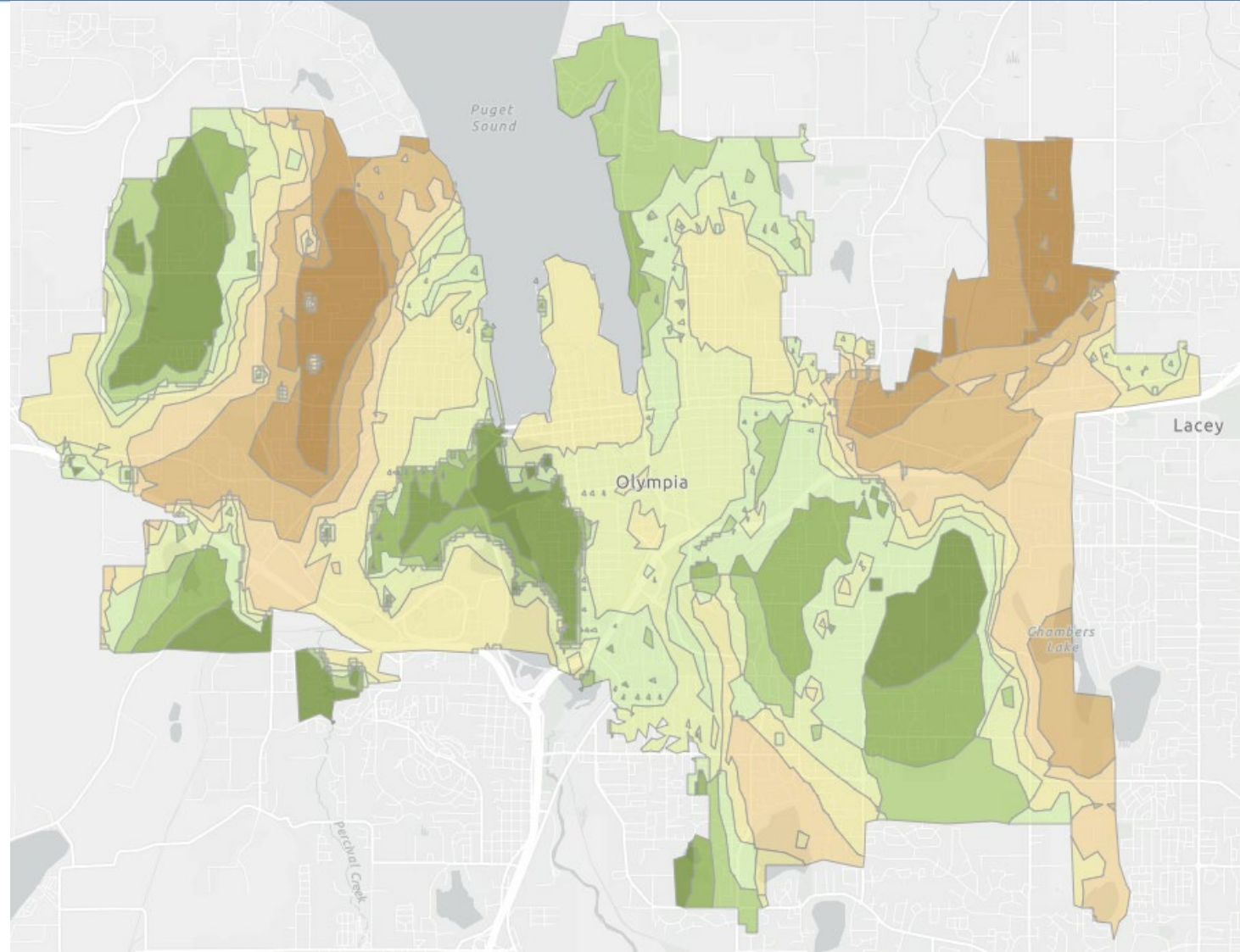
Analysis Results

REEP Event Locations

High Burden, Low Event Density



Low Burden, High Event Density



Challenges

- Updating data over time
- Building capacity for equity work
- Competing priorities

Goal:

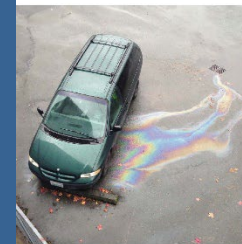
Outreach and engagement programs are inclusive, accessible and representative of the entire community and result in fair distribution of services and benefits.

- Attend events held by diverse community groups.
- Co-create a new REEP program with a selected overburdened community.
- Transcreate outreach materials.
- Prioritize community engagement activities in areas where there is overlap with known water quality concerns and overburdened populations.

Next Steps

Puget Sound comienza con el CUIDADO DEL AUTOMÓVIL

- Lleve su automóvil a un servicio de lavado comercial
- Si no puede usar un servicio de lavado comercial, lave su automóvil en un espacio con césped



- No conduzca un automóvil con fugas
- Revise con regularidad que no tenga fugas
- Deseche el aceite usado llevándolo a Thurston Hazohouse

- Mantenga sus llantas infladas con la presión correcta
- Revise la presión de sus llantas una vez al mes
- Revise la alineación de sus llantas y haga la rotación de acuerdo con las instrucciones del fabricante





Questions?