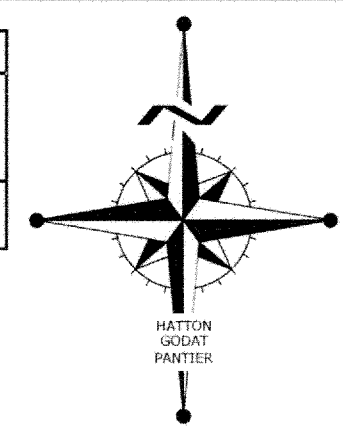
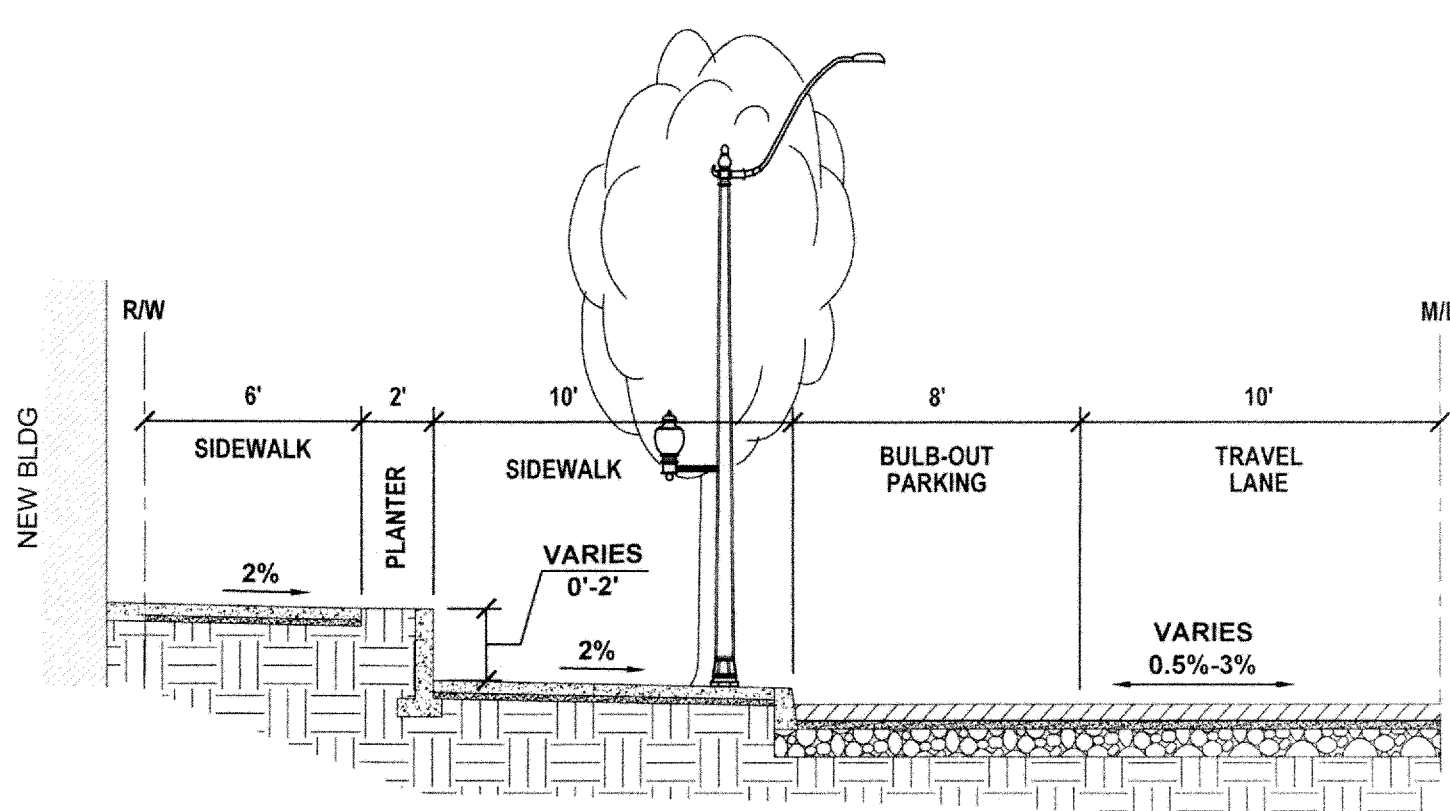


EARTHWORK CALCULATIONS	
CUT	2,500 CY
FILL	1,000 CY
FOR PERMITTING PURPOSES ONLY NOT TO BE USED FOR BIDDING	

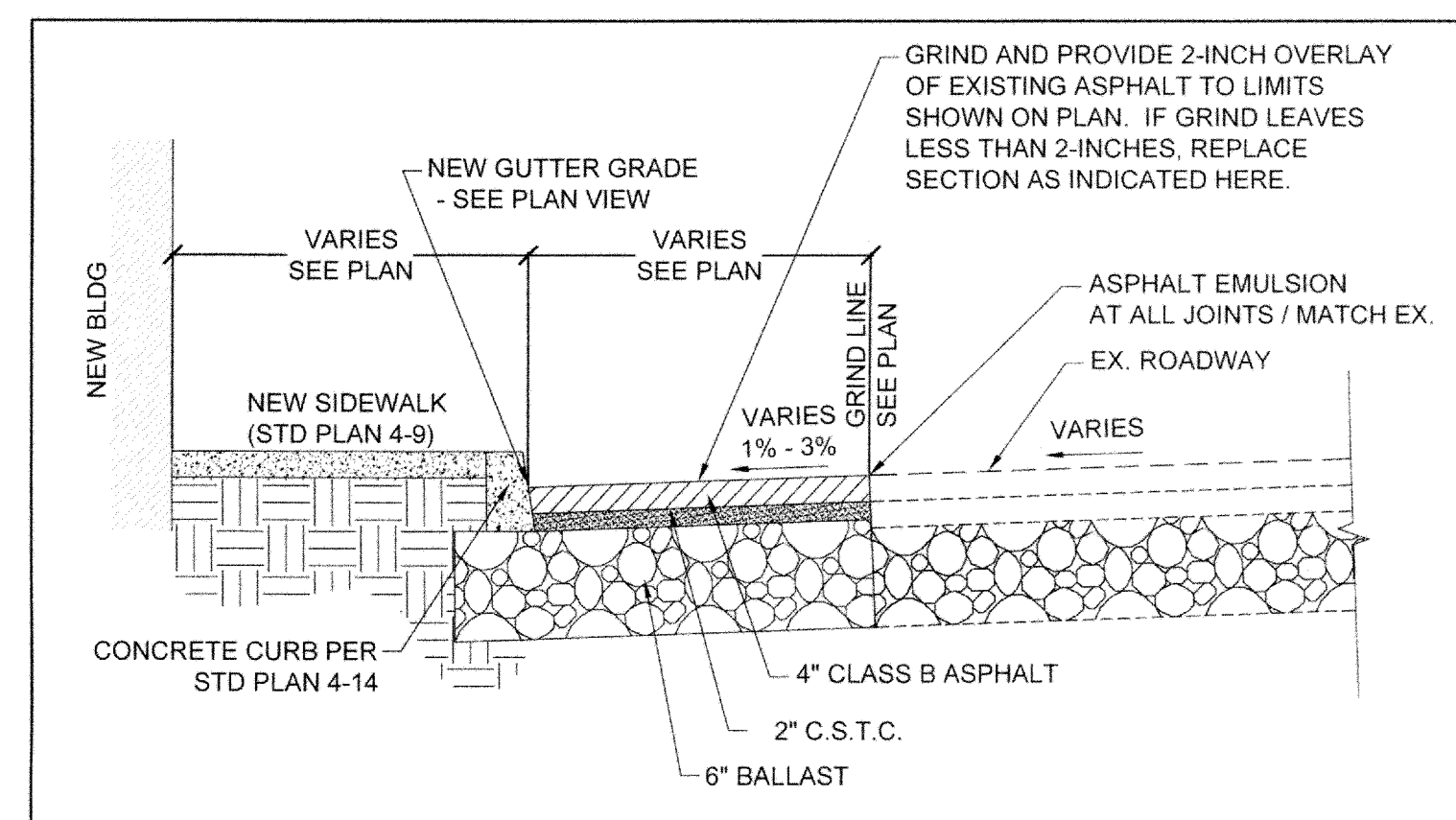


CITY OF OLYMPIA
VERTICAL DATUM
CITY OF OLYMPIA
BENCHMARK #2154
USC & GS MONUMENT TIDAL 11, EAST SIDE
OF OLD CITY HALL
BRASS DISC SET IN EST WALL NE CORNER
OF BLDG
ELEVATION = 15.86 (NAVD88)

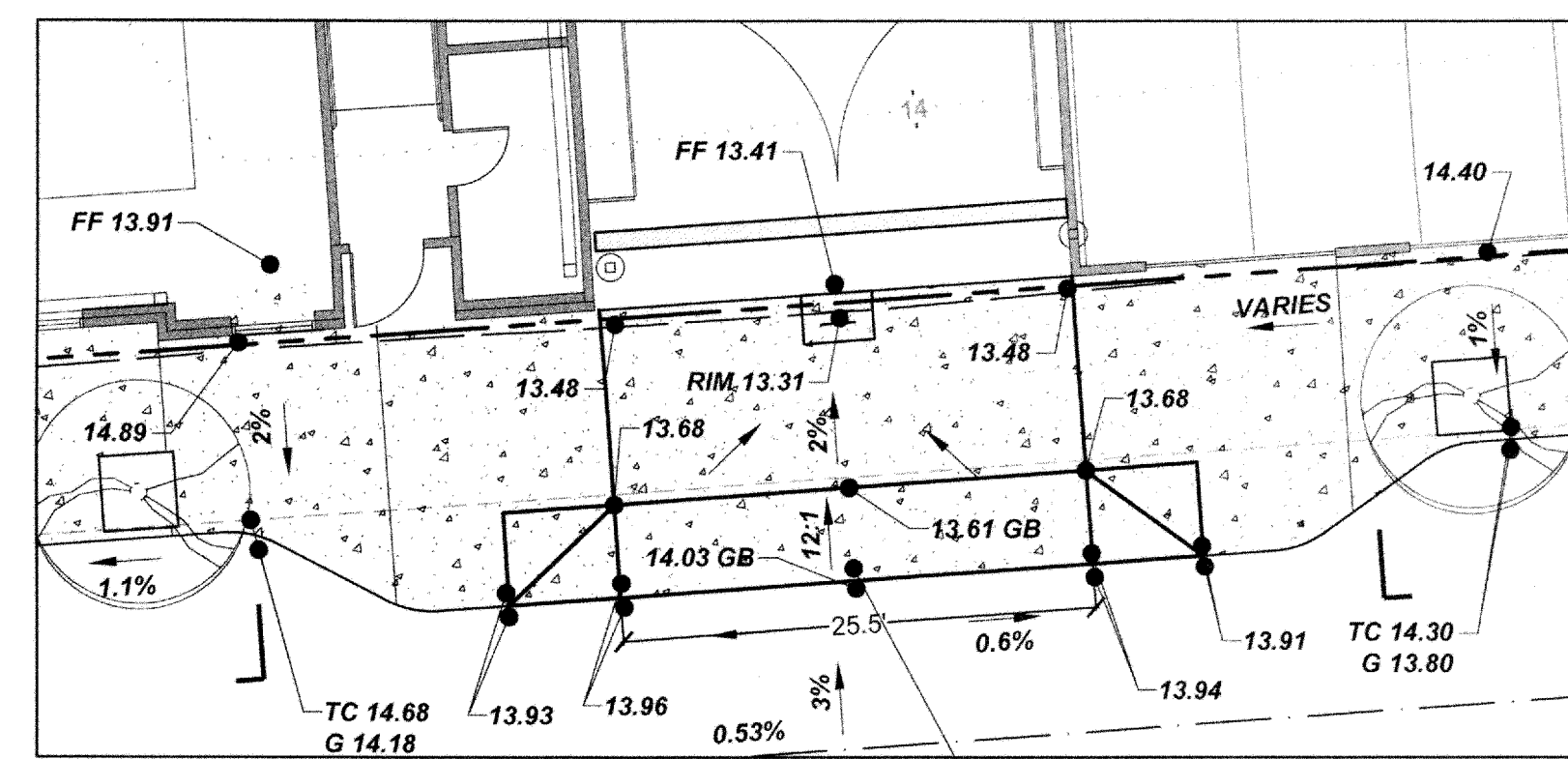
20 10 0 20 40
SCALE: 1" = 20'



COLUMBIA ST NW ROADWAY SECTION
N.T.S.



A
3
TYPICAL FRONTAGE SECTION
N.T.S.



B
3
DRIVEWAY DETAIL
1" = 10'

16-6491
received 11/30/16

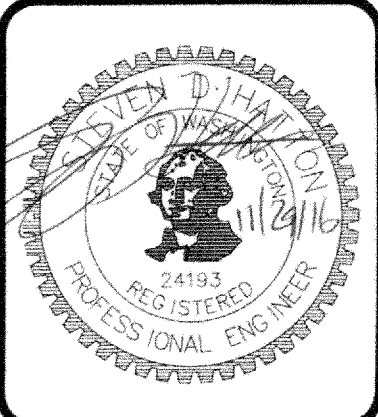
APPROVED FOR CONSTRUCTION

BY: _____ DATE: _____
Engineering Plans Examiner
APPROVAL EXPIRES: _____

NOTE: THE CONTRACTOR SHALL BE FULLY RESPONSIBLE FOR THE LOCATION AND PROTECTION OF ALL EXISTING UTILITIES. THE CONTRACTOR SHALL VERIFY ALL UTILITY LOCATIONS PRIOR TO CONSTRUCTION BY CALLING THE UNDERGROUND LOCATE LINE AT 811 A MINIMUM OF 48 HOURS PRIOR TO ANY EXCAVATION.

THIS DRAWING DOES NOT REPRESENT A RECORD DOCUMENT, UNLESS CERTIFIED BY HATTON GODAT PANTIER.
ANY ALTERATIONS TO THE DESIGN SHOWN HEREON MUST BE REVIEWED AND APPROVED BY HATTON GODAT PANTIER.

DESIGNED BY: DS/LDM
DRAWN BY: BJR/BSM
CHECKED BY: SDH
DATE: NOVEMBER 2016
SCALE: H 1" = 20'
V 1" = 20'
N/A

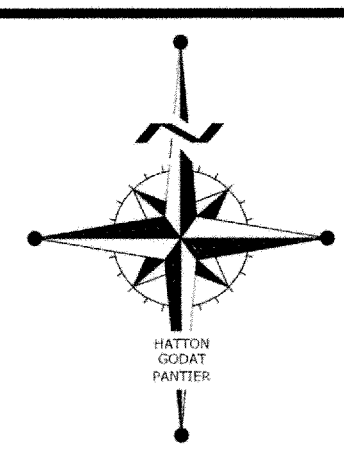
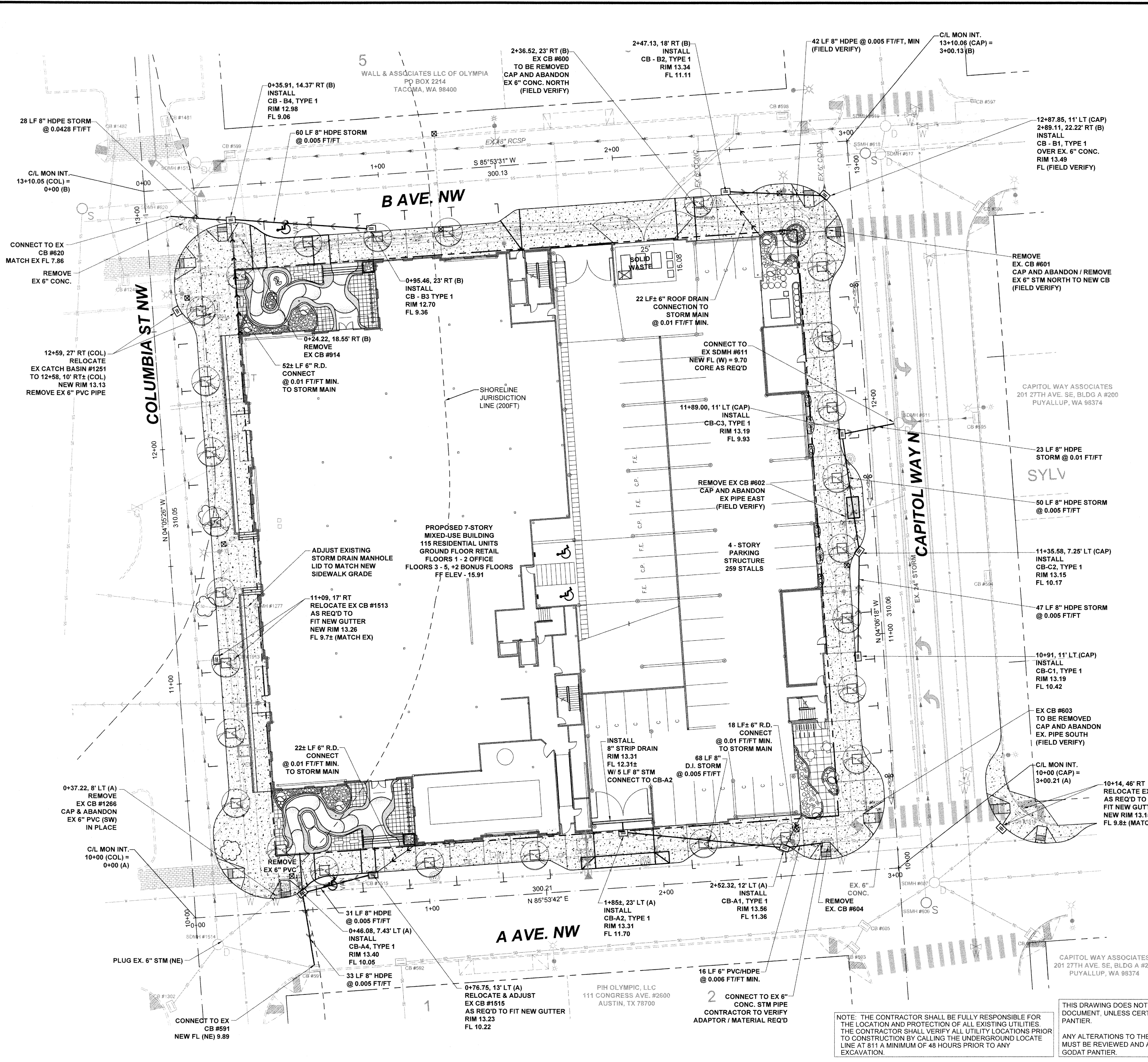


HATTON GODAT PANTIER
ENGINEERS AND SURVEYORS
3910 MARTIN WAY E, SUITE B
OLYMPIA, WA 98506
TEL: 360.943.1599 FAX: 360.357.6299
hattonpantier.com

REVISIONS	DATE

COLUMBIA PLACE
500 COLUMBIA STREET NW, OLYMPIA, WA 98501
A PORTION OF SECTION 14, TOWNSHIP 18 N, RANGE 2 WEST, W.M.
STREET & GRADING PLAN

AGENCY NO. 04-2629
SHEET: 3 OF 14
E:\dgn\05-000\05-099\CDs
INDEX: 05-099grd.dwg
JOB: 05-099



CITY OF OLYMPIA

VERTICAL DATUM
CITY OF OLYMPIA
BENCHMARK #2154
USC & GS MONUMENT TIDAL 11, EAST SIDE
OF OLD CITY HALL
BRASS DISC SET IN EST WALL NE CORNER
OF BLDG
ELEVATION = 15.86 (NAVD88)

20 10 0 10 20 40
SCALE: 1" = 20'

EXISTING STRUCTURE TABLE

CB #591 TYPE I RIM=13.95 IE(W)=9.89(8"PVC)	SDMH #607 48" CONCRETE RIM=14.19 CL CHANNEL=5.54 IE(S)=5.62(26"PVC) IE(N)=5.48(26"PVC) IE(E)=9.25(12"DUCTILE) IE(S)=8.99(12"DUCTILE) (W)=10(PVC) (SW)=12(PVC) (SE & NE)=8(PVC)	SDMH #1478 24" CONCRETE (COVER MARKED SANITARY SEWER) RIM=13.38 IE(N)=8.82(7") TOP OF 24" VERTICAL CONCRETE PIPE INSIDE OF STRUCTURE=3.25 IE(S)=3.02 (W)=10(PVC) LID LABELED S/S
CB #593 TYPE I RIM=13.59 IE(N)=10.12(8"PVC) IE(W)=10.14(8"PVC)	SDMH #611 48" CONCRETE RIM=13.93 IE(N)=4.81(26"PVC) IE(S)=4.87(26"PVC) IE(E)=7(8"PVC)	CB #1479 TYPE I RIM=13.15 IE(SW)=9.83(6"PVC) IE(N)=9.87(6"PVC)
CB #594 TYPE I RIM=13.31 IE(S)=11.42(8"PVC)	SDMH #617 48" RIM=13.87 IE(S)=4.33(26"PVC) IE(N)=4.25(26"PVC) TOP SEWER=6.15(16"PVC) IE(E)=10.27(8"PVC) IE(S)=10.06(8"PVC)	CB #1480 TYPE I RIM=13.12 IE(E)=10.13(6"PVC)
CB #595 TYPE I RIM=13.33 IE(E)=10.27(8"PVC) IE(W)=10.06(8"PVC)	SDMH #618 RIM=13.77 CL CHANNEL=5.53 (S)=10(PVC) (W & E)=12(PVC)	CB #1481 TYPE I RIM=12.75 IE(W)=10.53(6"PVC)
CB #596 TYPE I RIM=13.27 IE(NW)=10.09(8"PVC) IE(SE)=10.17(8"PVC)	SDMH #619 (COVER MARKED SANITARY SEWER) VAULT WITH STEPPED INTERIOR UNABLE TO ATTAIN INTERIOR DIMENSIONING RIM=13.78 CHANNEL=4.16 30" HINGED METAL COVER SOUTH SDMH #620 RIM=13.37 CHANNEL=7.86 (POOR CONDITION BRICK RISERS)	CB #1482 30" RIM=12.62 IE(S)=10.20(6"CONC) IE(E)=10.39(6"PVC)
CB #597 1.1'X2.2' CONCRETE BOX RIM=13.07 IE(W)=11.56(6"CONC.)	SDMH #621 RIM=13.10 IE(N)=12.21(4"PVC)	SDMH #1512 RIM=13.64 IE(W&E)=7" TOP OF 24" VERTICAL CONCRETE PIPE=7.95 FLOWLINE=1.81
CB #598 TYPE I RIM=13.10 IE(N)=12.21(4"PVC)	SDMH #622 RIM=13.37 CHANNEL=7.86 (POOR CONDITION BRICK RISERS)	CB #1513 30" VAULT WITH STEPPED INTERIOR UNABLE TO ATTAIN INTERIOR DIMENSIONING RIM=13.15 IE(W)=9.75(6"PVC)
CB #599 30" CONCRETE RIM=12.36 IE(SW)=9.50(6"CONC) IE(N)=7(6"CONC)	SDMH #623 RIM=13.52 IE(E)=11.27(8"CONC)	SDMH #1514 RIM=14.59 CHANNEL=9.58 (N)=6(PVC) (S)=6(PVC) (E)=6(PVC) (NW)=6(PVC) (SW)=6(PVC)
CB #600 30" CONCRETE RIM=13.12 IE(N)=10.80(8"CONC)	SDMH #624 RIM=13.52 IE(E)=11.27(8"CONC)	SDMH #1515 TYPE I RIM=13.50 IE(W)=11.12(6"PVC)
CB #601 1.1'X2.2' CONCRETE BOX RIM=13.27 FULL OF MUD	SDMH #625 48" CONCRETE RIM=13.97 IE(N)=10.97(8"TERACOTTA) IE(W)=9.80(10"TERACOTTA) IE(E)=9.37 ELEV. OF REBAR & CHANNEL STEEL GRATE=9.15	SDMH #1516 TYPE I RIM=13.25 IE(N)=10.61(8"PVC) IE(E)=10.45(8"PVC) IE(SW)=9.95(6"PVC)
CB #602 1.1'X2.2' CONCRETE BOX RIM=13.20 FLOW LINE=8.9± FULL OF MUD	SDMH #626 TYPE I RIM=13.59 IE(W)=12.01(6"PVC) IE(E)=12.07(6"PVC)	SDMH #1517 TYPE I RIM=13.25 IE(S)=9.95(8"PVC) IE(NW)=9.87(6"PVC)
CB #603 1.1'X2.2' CONCRETE BOX RIM=13.43 IE(S)=12.37(6"CONC)	SDMH #1277 ARTESIAN WELL DRAIN VAULT RIM=13.97 IE(N)=10.97(8"TERACOTTA) IE(W)=9.80(10"TERACOTTA) IE(E)=9.37 ELEV. OF REBAR & CHANNEL STEEL GRATE=9.15	SDMH #1518 TYPE I RIM=13.25 IE(N)=10.61(8"PVC) IE(E)=10.45(8"PVC) IE(SW)=9.95(6"PVC)
CB #604 30" RIM=13.52 IE(E)=11.27(8"CONC)	SDMH #627 RIM=13.52 IE(E)=11.27(8"CONC)	SDMH #1519 TYPE I RIM=13.25 IE(S)=9.95(8"PVC) IE(NW)=9.87(6"PVC)
CB #605 48" CONCRETE RIM=13.73 IE(E)=8.48(12"PVC) IE(W)=8.36(12"DUCTILE) IE(SW)=UNOBTAINABLE	SDMH #628 RIM=13.52 IE(E)=11.27(8"CONC)	SDMH #1520 TYPE I RIM=13.25 IE(S)=9.95(8"PVC) IE(NW)=9.87(6"PVC)
SSMH #606 48" CONCRETE RIM=14.02 CL CHANNEL=6.82 (S & N)=8(PVC)	SDMH #629 RIM=13.52 IE(E)=11.27(8"CONC)	SDMH #1521 TYPE I RIM=13.25 IE(S)=9.95(8"PVC) IE(NW)=9.87(6"PVC)
SDMH #607 48" CONCRETE RIM=14.19 CL CHANNEL=5.54 IE(S)=5.62(26"PVC) IE(N)=5.48(26"PVC) IE(E)=9.25(12"DUCTILE) IE(S)=8.99(12"DUCTILE) (W)=10(PVC) (SW)=12(PVC) (SE & NE)=8(PVC)	SDMH #630 48" CONCRETE RIM=14.18 IE(N)=11.65(6"PVC)	SDMH #1522 TYPE I RIM=13.25 IE(S)=9.95(8"PVC) IE(NW)=9.87(6"PVC)

16-6491
received 11/30/16

NOTE: THE CONTRACTOR SHALL BE FULLY RESPONSIBLE FOR THE LOCATION AND PROTECTION OF ALL EXISTING UTILITIES. THE CONTRACTOR SHALL VERIFY ALL UTILITY LOCATIONS PRIOR TO CONSTRUCTION BY CALLING THE UNDERGROUND LOCATE LINE AT 811 A MINIMUM OF 48 HOURS PRIOR TO ANY EXCAVATION.

THIS DRAWING DOES NOT REPRESENT A RECORD DOCUMENT, UNLESS CERTIFIED BY HATTON GODAT PANTIER.

ANY ALTERATIONS TO THE DESIGN SHOWN HEREON MUST BE REVIEWED AND APPROVED BY HATTON GODAT PANTIER.

APPROVED FOR CONSTRUCTION

BY: _____ DATE: _____
Engineering Plans Examiner

APPROVAL EXPIRES: _____

DESIGNED BY: DS / DM
DRAWN BY: BUR / BSM
CHECKED BY: SDH
DATE: NOVEMBER 2016
SCALE: 1" = 20'

HATTON GODAT PANTIER
ENGINEERS AND SURVEYORS
3910 MARTIN WAY E, SUITE B
OLYMPIA, WA 98506
TEL: 360.943.1599 FAX: 360.357.6299
hattonpantier.com

DATE: _____
REVISIONS: _____

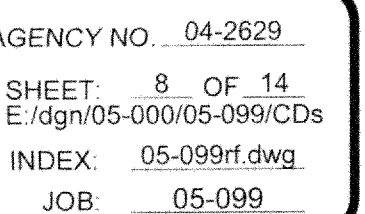
COLUMBIA PLACE
500 COLUMBIA STREET NW, OLYMPIA, WA 98501

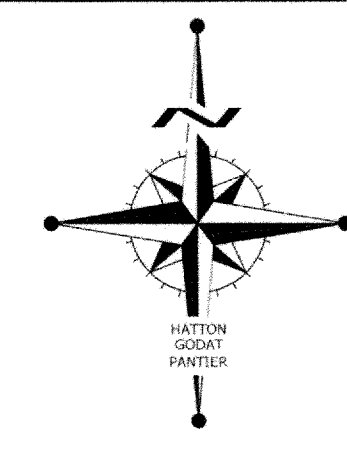
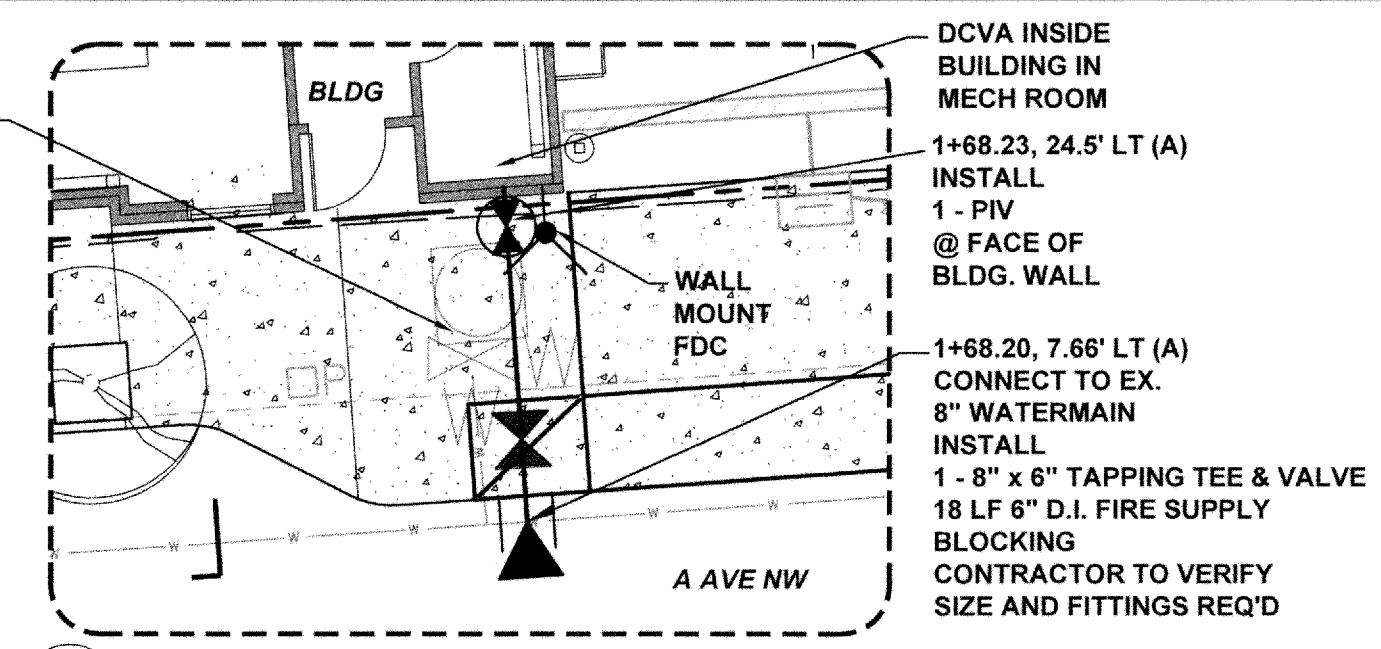
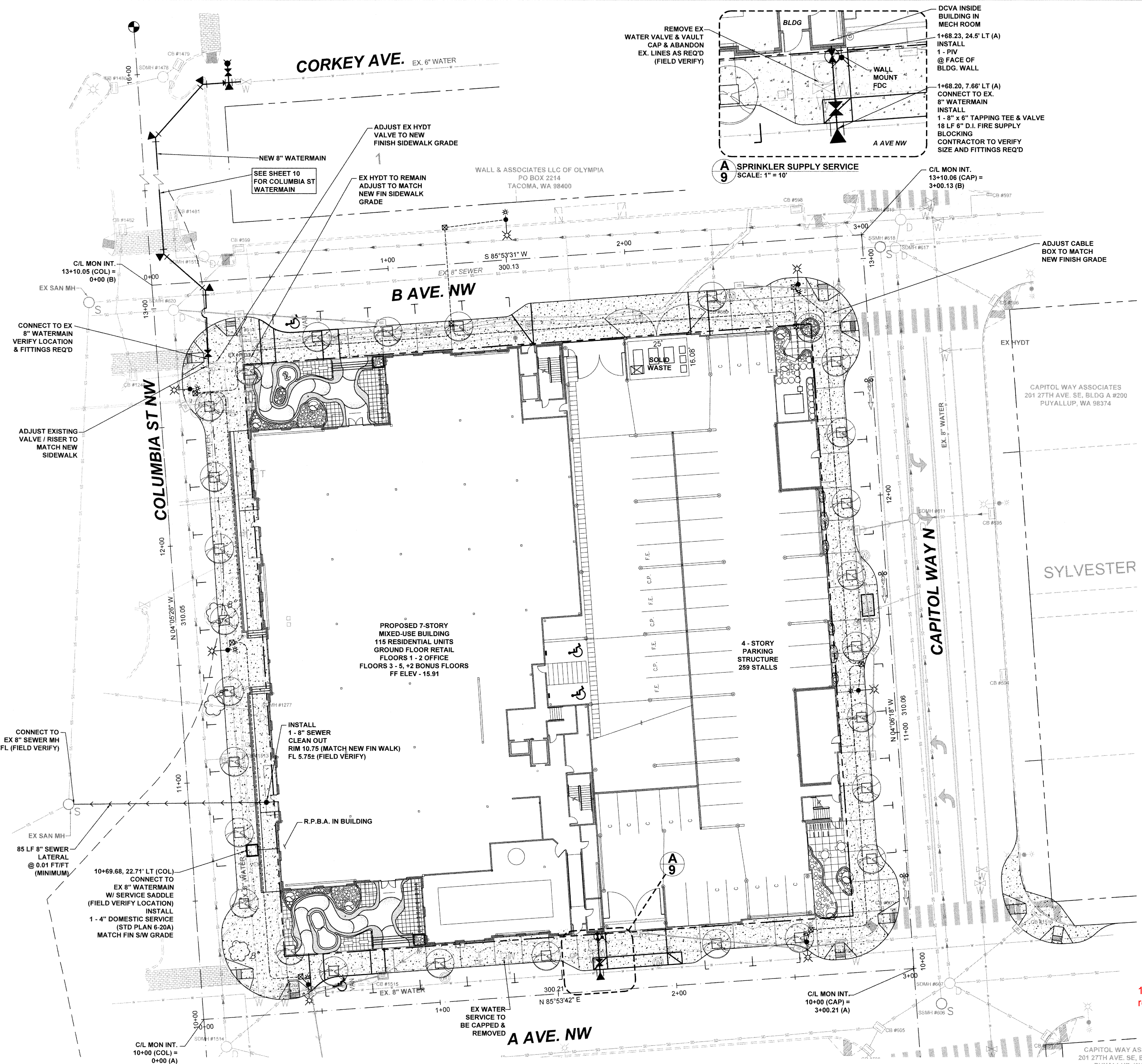
DRAINAGE PLAN

A PORTION OF SECTION 14, TOWNSHIP 18 N, RANGE 2 WEST, W.M.

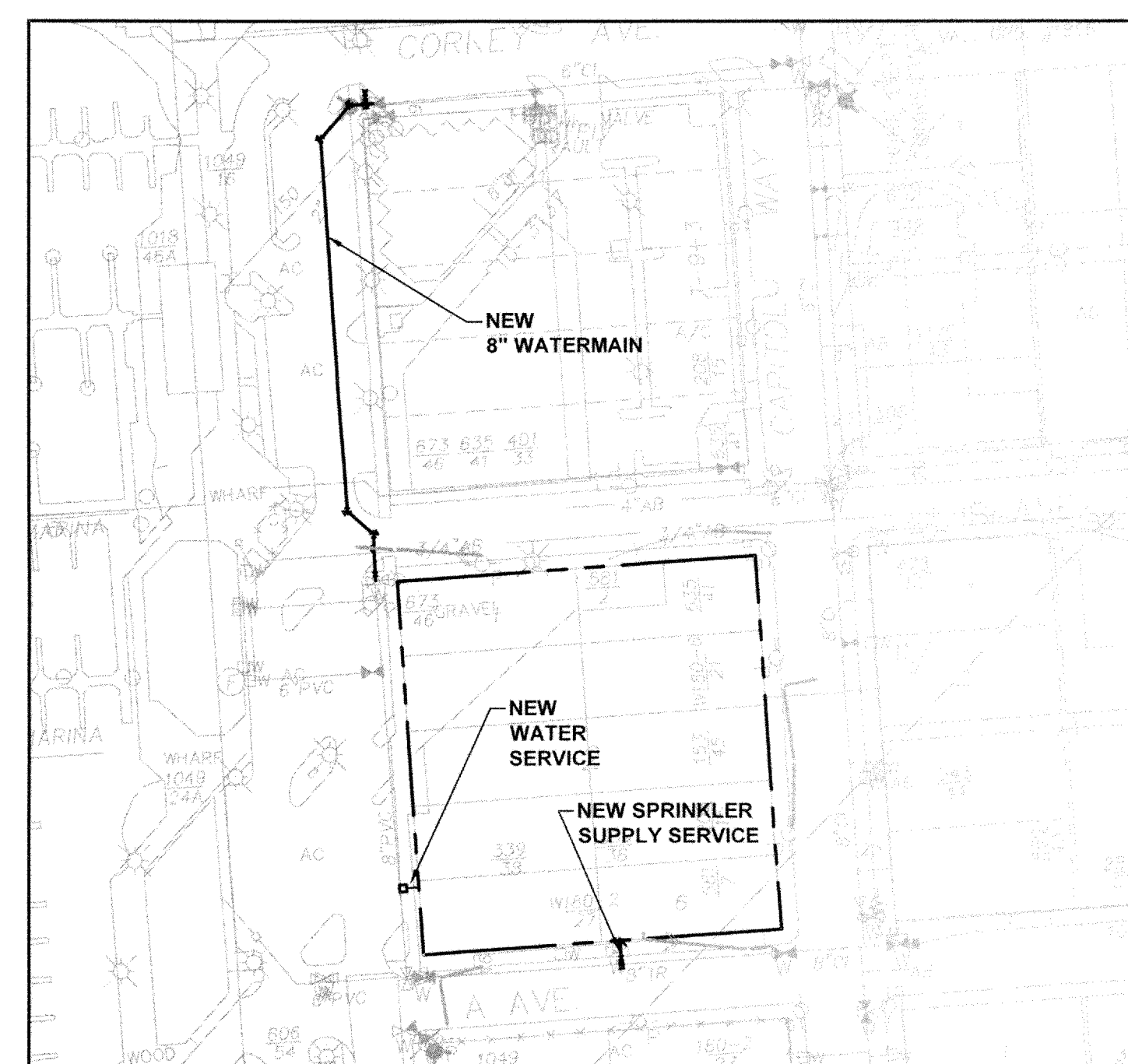
TP# 910090000

AGENCY NO: 04-2629
SHEET: 4 OF 14
E:\dgn\05-000\05-099\CDs
INDEX: 05-099dm.dwg
JOB: 05-099

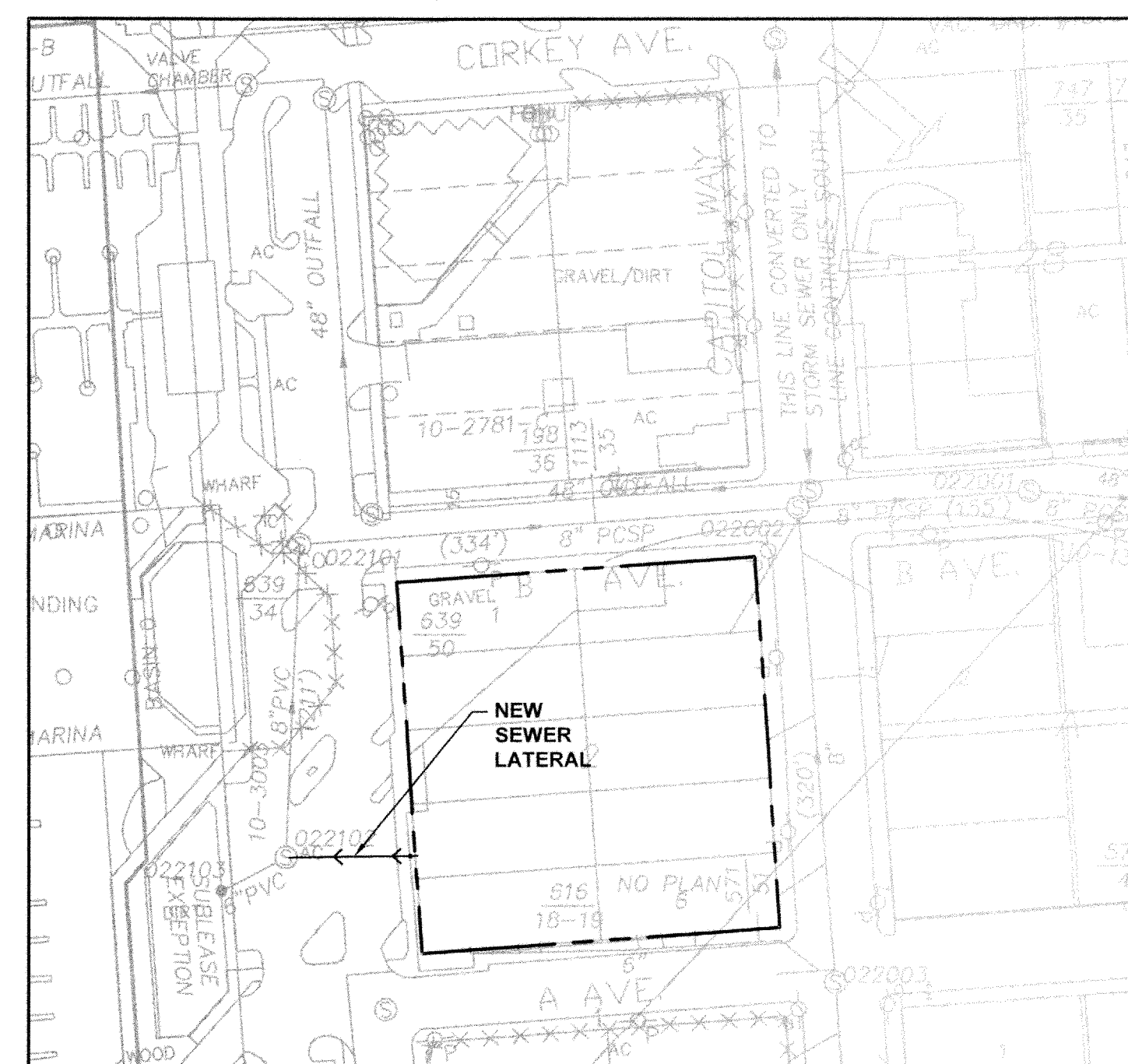




CITY OF OLYMPIA
VERTICAL DATUM
CITY OF OLYMPIA
BENCHMARK #2154
USC & GS MONUMENT TIDAL 11, EAST SIDE
OF OLD CITY HALL
BRASS DISC SET IN EST WALL NE CORNER
OF BLDG
ELEVATION = 15.86 (NAVD88)
SCALE: 1" = 20'



WATER SYSTEM MAP
1" = 100'



SEWER SYSTEM MAP
1" = 100'

THIS DRAWING DOES NOT REPRESENT A RECORD DOCUMENT, UNLESS CERTIFIED BY HATTON GODAT PANTIER.
ANY ALTERATIONS TO THE DESIGN SHOWN HEREON MUST BE REVIEWED AND APPROVED BY HATTON GODAT PANTIER.

NOTE: THE CONTRACTOR SHALL BE FULLY RESPONSIBLE FOR THE LOCATION AND PROTECTION OF ALL EXISTING UTILITIES. THE CONTRACTOR SHALL VERIFY ALL UTILITY LOCATIONS PRIOR TO CONSTRUCTION BY CALLING THE UNDERGROUND LOCATE LINE AT 811 A MINIMUM OF 48 HOURS PRIOR TO ANY EXCAVATION.

APPROVED FOR CONSTRUCTION

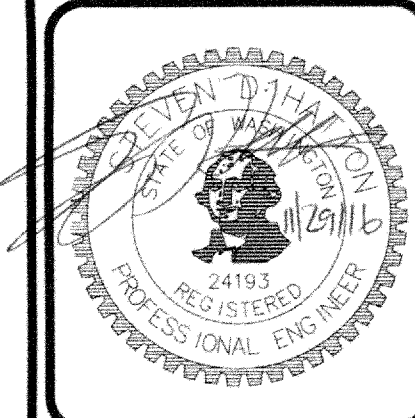
BY: _____ DATE: _____
Engineering Plans Examiner

APPROVAL EXPIRES: _____

16-6491
received 11/30/16

CAPITOL WAY ASSOCIATES
201 27TH AVE. SE, BLDG A #200
PUYALLUP, WA 98374

DESIGNED BY: DS/DM
DRAWN BY: BJR/BSM
CHECKED BY: SDH
DATE: NOVEMBER 2016
SCALE: H 1" = 20' V N/A

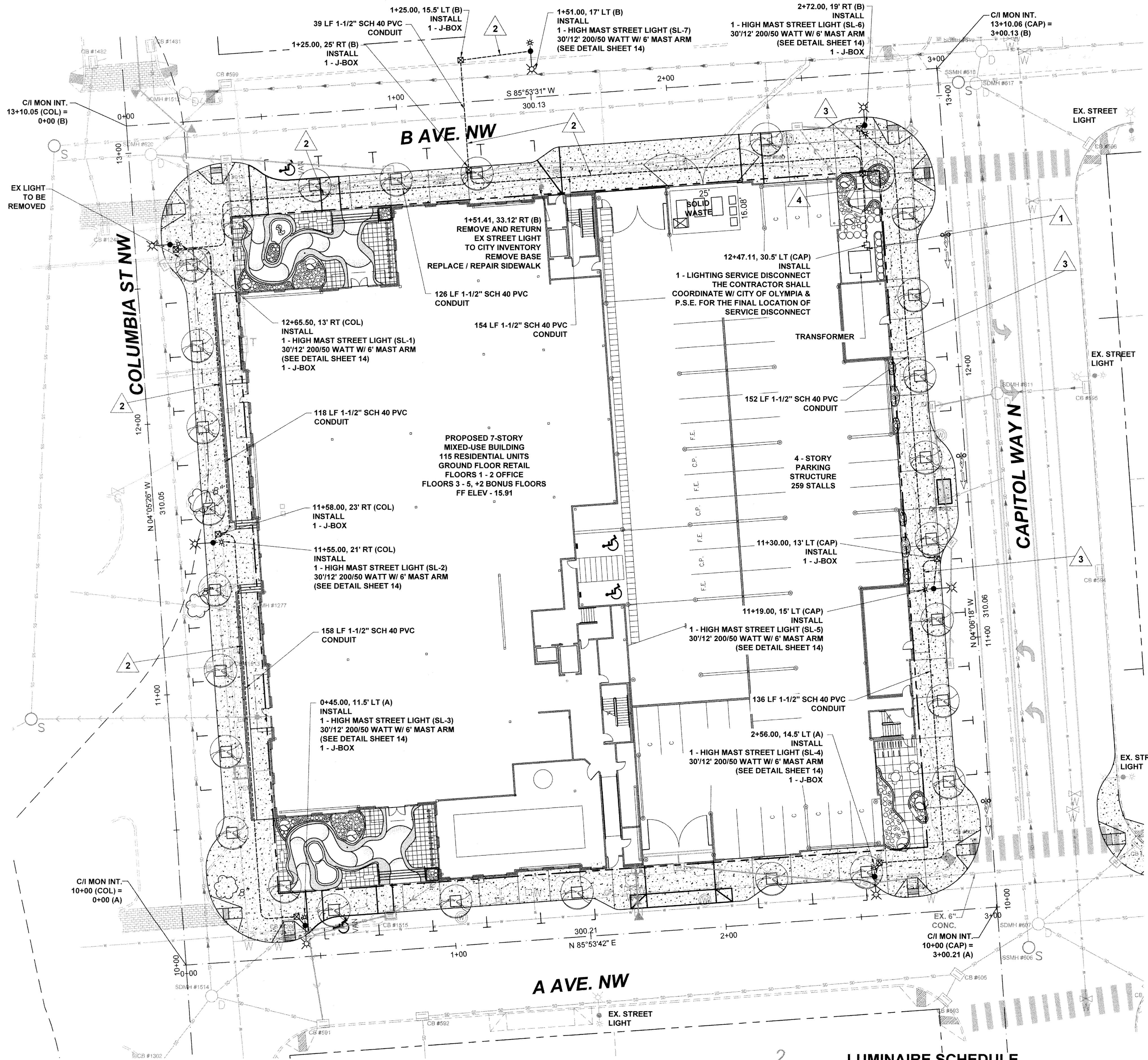


HATTON
ENGINEERS
AND
SURVEYORS
3910 MARTIN WAY E, SUITE B
OLYMPIA, WA 98506
TEL: 360.943.1599 FAX: 360.357.6299
hattonpantier.com

REVISIONS	DATE

COLUMBIA PLACE
500 COLUMBIA STREET NW, OLYMPIA, WA 98501
OVERALL UTILITY PLAN
A PORTION OF SECTION 14, TOWNSHIP 18 N, RANGE 2 WEST, W.M.

AGENCY NO. 04-2629
SHEET: 9 OF 14
E:\agn\05-000\05-099\CDs
INDEX: 05-099util.dwg
JOB: 05-099



- STREET LIGHT CONSTRUCTION NOTES:**
1. ALL WORKMANSHIP, MATERIALS AND TESTING SHALL BE IN ACCORDANCE WITH WSDOT/APWA, MUTCD, NEC OR CITY OF OLYMPIA DEVELOPMENT STANDARDS OR CITY OF OLYMPIA STREETLIGHT INSTALLATION GUIDELINES UNLESS OTHERWISE SPECIFIED BELOW. IN CASES OF CONFLICT THE MOST STRINGENT GUIDELINE SHALL APPLY.
 2. A R-O-W OBSTRUCTION PERMIT, ELECTRICAL PERMITS AND INSPECTIONS ARE REQUIRED FOR ALL STREET LIGHTING INSTALLATIONS WITHIN THE CITY OF OLYMPIA. THE CONTRACTOR IS RESPONSIBLE FOR OBTAINING SAID PERMITS PRIOR TO ANY TYPE OF CONSTRUCTION. PERMITS ARE AVAILABLE FROM THE COMMUNITY PLANNING AND DEVELOPMENT DEPARTMENT, 837 7TH AVENUE, SE.
 3. A CLEARLY MARKED SERVICE DISCONNECT SHALL BE PROVIDED FOR EVERY LIGHTING CIRCUIT. THE LOCATION AND INSTALLATION OF THE DISCONNECT SHALL CONFORM TO NATIONAL ELECTRICAL CODE (NEC) AND CITY OF OLYMPIA STANDARDS. THE PHOTO CELL WINDOW SHALL FACE NORTH UNLESS OTHERWISE DIRECTED BY THE CITY. THE SERVICE DISCONNECT SHALL NOT BE MOUNTED ON THE LUMINAIRE POLE. THE SERVICE DISCONNECT SHALL BE OF A TYPE EQUAL TO A MILLBANK CP3B0113EAL, 120/240 VAC, SINGLE-PHASE 3W, CALTRANS TYPE 3B WITH CONTACTORS, PHOTO-ELECTRIC CELL, AND TEST SWITCH. ALL SERVICE DISCONNECTS SHALL BE USED TO THEIR FULLEST CAPABILITIES, (I.E., MAXIMUM NUMBER OF LUMINAIRES PER CIRCUIT).
 4. ALL LIGHTING WIRE SHALL BE COPPER WITH A MINIMUM SIZE OF #8. ALL WIRE SHALL BE SUITABLE FOR WET LOCATIONS. ALL WIRE SHALL BE INSTALLED IN SCHEDULE 40 PVC CONDUIT WITH A MINIMUM DIAMETER OF 1-1/2 INCHES. A BUSHING OR BELL-END SHALL BE USED AT THE END OF A CONDUIT THAT TERMINATES AT A JUNCTION BOX OR LUMINAIRE POLE. CONDUCTOR IDENTIFICATION SHALL BE AN INTEGRAL PART OF THE INSULATION OF THE CONDUCTORS THROUGHOUT THE SYSTEM, (I.E., COLOR CODED WIRE). EQUIPMENT GROUNDING CONDUCTOR SHALL BE #8 COPPER. ALL SPLICES OR TAPS SHALL BE MADE BY APPROVED METHODS UTILIZING EPOXY KITS RATED AT 600 VOLTS (I.E., 3-M 82-A2). ALL SPLICES SHALL BE MADE WITH PRESSURE TYPE CONNECTORS (WIRE NUTS WILL NOT BE ALLOWED). DIRECT BURIAL WIRE WILL NOT BE ALLOWED. ALL OTHER INSTALLATION SHALL CONFORM TO NEC, WSDOT/APWA AND MUTCD STANDARDS.
 5. EACH LUMINAIRE POLE SHALL HAVE AN IN-LINE, FUSED, WATER TIGHT ELECTRICAL DISCONNECT LOCATED AT THE BASE OF THE POLE. ACCESS TO THESE FUSED DISCONNECTS SHALL BE THROUGH THE HAND-HOLE ON THE POLE. THE HAND-HOLE SHALL BE FACING AWAY FROM ON-COMING TRAFFIC. ADDITIONAL CONDUCTOR LENGTH SHALL BE LEFT INSIDE THE POLE AND PULL OR JUNCTION BOX EQUAL TO A LOOP HAVING A DIAMETER OF ONE FOOT. LOAD SIDE OF IN-LINE FUSE TO LUMINAIRE HEAD SHALL BE CABLE AND POLE BRACKET WIRE, 2 CONDUCTOR, 19 STRAND, COPPER #10, AND SHALL BE SUPPORTED AT THE END OF THE LUMINAIRE ARM BY AN APPROVED MEANS. FUSE SIZE, DISCONNECT INSTALLATION, AND GROUNDING IN POLE SHALL CONFORM TO NEC STANDARDS.
 6. APPROVED PULL BOXES OR JUNCTION BOXES SHALL BE INSTALLED WHEN CONDUIT RUNS ARE MORE THAN 200 FEET. IN ADDITION, A PULL BOX OR JUNCTION BOX SHALL BE LOCATED WITHIN 10 FEET OF EACH LUMINAIRE POLE AND AT EVERY ROAD CROSSING. BOXES SHALL BE CLEARLY AND INDELIBLY MARKED AS LIGHTING BOXES BY THE LEGEND, "L.T." OR "LIGHTING". SEE WSDOT STANDARD PLAN J-1A.
 7. ALL LIGHTING POLES SHALL HAVE TAPERED ROUND SHAFTS WITH A LINEAR TAPER OF BETWEEN 0.125 AND 0.14 INCHES PER FOOT. IN EXISTING DEVELOPED AREAS, THE CITY MAY APPROVE/REQUIRE USE OF OTHER POLES TO ESTABLISH CONSISTENCY WITHIN THE DEVELOPED AREA.
 8. MOUNTING HEIGHTS, ARM LENGTH, POWER SOURCE, LUMINAIRES AND BOLT PATTERNS SHALL BE AS FOLLOWS:
MOUNTING HEIGHT: 30' 12 FT.
ARM LENGTH: 6 FT.
POWER SOURCE: 240 VAC, SINGLE PHASE, 3 WIRE
LUMINAIRE TYPE: 200 / 50 WATT, HIGH PRESSURE SODIUM
FLAT LENS, MEDIUM CUTOFF, I.E.S.
TYPE 3 DISTRIBUTION
BOLT PATTERN: 4 BOLT, 1 1/2" DIAMETER BOLT CIRCLE
 9. CEMENT CONCRETE BASES SHALL FOLLOW CITY OF OLYMPIA STREETLIGHT STANDARD PLAN 4-33. CONDUIT SHALL EXTEND BETWEEN 3 AND 6 INCHES ABOVE THE CONCRETE BASE.
 10. REFER TO STANDARD PLANS 4-30, 4-31, AND 4-31A FOR TYPICAL STREETLIGHT INSTALLATION LAYOUT.
 11. ANY MODIFICATION TO APPROVED PLANS SHALL BE REVIEWED AND APPROVED BY THE CITY PRIOR TO INSTALLATION.

CITY OF OLYMPIA

VERTICAL DATUM

CITY OF OLYMPIA
BENCHMARK #2154
USC & GS MONUMENT TIDAL 11, EAST SIDE
OF OLD CITY HALL
BRASS DISC SET IN EST WALL NE CORNER
OF BLDG
ELEVATION = 15.86 (NAVD88)

SCALE: 1" = 20'

1. ALL WORKMANSHIP, MATERIALS AND TESTING SHALL BE IN ACCORDANCE WITH WSDOT/APWA, MUTCD, NEC OR CITY OF OLYMPIA DEVELOPMENT STANDARDS OR CITY OF OLYMPIA STREETLIGHT INSTALLATION GUIDELINES UNLESS OTHERWISE SPECIFIED BELOW. IN CASES OF CONFLICT THE MOST STRINGENT GUIDELINE SHALL APPLY.

2. A R-O-W OBSTRUCTION PERMIT, ELECTRICAL PERMITS AND INSPECTIONS ARE REQUIRED FOR ALL STREET LIGHTING INSTALLATIONS WITHIN THE CITY OF OLYMPIA. THE CONTRACTOR IS RESPONSIBLE FOR OBTAINING SAID PERMITS PRIOR TO ANY TYPE OF CONSTRUCTION. PERMITS ARE AVAILABLE FROM THE COMMUNITY PLANNING AND DEVELOPMENT DEPARTMENT, 837 7TH AVENUE, SE.

3. A CLEARLY MARKED SERVICE DISCONNECT SHALL BE PROVIDED FOR EVERY LIGHTING CIRCUIT. THE LOCATION AND INSTALLATION OF THE DISCONNECT SHALL CONFORM TO NATIONAL ELECTRICAL CODE (NEC) AND CITY OF OLYMPIA STANDARDS. THE PHOTO CELL WINDOW SHALL FACE NORTH UNLESS OTHERWISE DIRECTED BY THE CITY. THE SERVICE DISCONNECT SHALL NOT BE MOUNTED ON THE LUMINAIRE POLE. THE SERVICE DISCONNECT SHALL BE OF A TYPE EQUAL TO A MILLBANK CP3B0113EAL, 120/240 VAC, SINGLE-PHASE 3W, CALTRANS TYPE 3B WITH CONTACTORS, PHOTO-ELECTRIC CELL, AND TEST SWITCH. ALL SERVICE DISCONNECTS SHALL BE USED TO THEIR FULLEST CAPABILITIES, (I.E., MAXIMUM NUMBER OF LUMINAIRES PER CIRCUIT).

4. ALL LIGHTING WIRE SHALL BE COPPER WITH A MINIMUM SIZE OF #8. ALL WIRE SHALL BE SUITABLE FOR WET LOCATIONS. ALL WIRE SHALL BE INSTALLED IN SCHEDULE 40 PVC CONDUIT WITH A MINIMUM DIAMETER OF 1-1/2 INCHES. A BUSHING OR BELL-END SHALL BE USED AT THE END OF A CONDUIT THAT TERMINATES AT A JUNCTION BOX OR LUMINAIRE POLE. CONDUCTOR IDENTIFICATION SHALL BE AN INTEGRAL PART OF THE INSULATION OF THE CONDUCTORS THROUGHOUT THE SYSTEM, (I.E., COLOR CODED WIRE). EQUIPMENT GROUNDING CONDUCTOR SHALL BE #8 COPPER. ALL SPLICES OR TAPS SHALL BE MADE BY APPROVED METHODS UTILIZING EPOXY KITS RATED AT 600 VOLTS (I.E., 3-M 82-A2). ALL SPLICES SHALL BE MADE WITH PRESSURE TYPE CONNECTORS (WIRE NUTS WILL NOT BE ALLOWED). DIRECT BURIAL WIRE WILL NOT BE ALLOWED. ALL OTHER INSTALLATION SHALL CONFORM TO NEC, WSDOT/APWA AND MUTCD STANDARDS.

5. EACH LUMINAIRE POLE SHALL HAVE AN IN-LINE, FUSED, WATER TIGHT ELECTRICAL DISCONNECT LOCATED AT THE BASE OF THE POLE. ACCESS TO THESE FUSED DISCONNECTS SHALL BE THROUGH THE HAND-HOLE ON THE POLE. THE HAND-HOLE SHALL BE FACING AWAY FROM ON-COMING TRAFFIC. ADDITIONAL CONDUCTOR LENGTH SHALL BE LEFT INSIDE THE POLE AND PULL OR JUNCTION BOX EQUAL TO A LOOP HAVING A DIAMETER OF ONE FOOT. LOAD SIDE OF IN-LINE FUSE TO LUMINAIRE HEAD SHALL BE CABLE AND POLE BRACKET WIRE, 2 CONDUCTOR, 19 STRAND, COPPER #10, AND SHALL BE SUPPORTED AT THE END OF THE LUMINAIRE ARM BY AN APPROVED MEANS. FUSE SIZE, DISCONNECT INSTALLATION, AND GROUNDING IN POLE SHALL CONFORM TO NEC STANDARDS.

6. APPROVED PULL BOXES OR JUNCTION BOXES SHALL BE INSTALLED WHEN CONDUIT RUNS ARE MORE THAN 200 FEET. IN ADDITION, A PULL BOX OR JUNCTION BOX SHALL BE LOCATED WITHIN 10 FEET OF EACH LUMINAIRE POLE AND AT EVERY ROAD CROSSING. BOXES SHALL BE CLEARLY AND INDELIBLY MARKED AS LIGHTING BOXES BY THE LEGEND, "L.T." OR "LIGHTING". SEE WSDOT STANDARD PLAN J-1A.

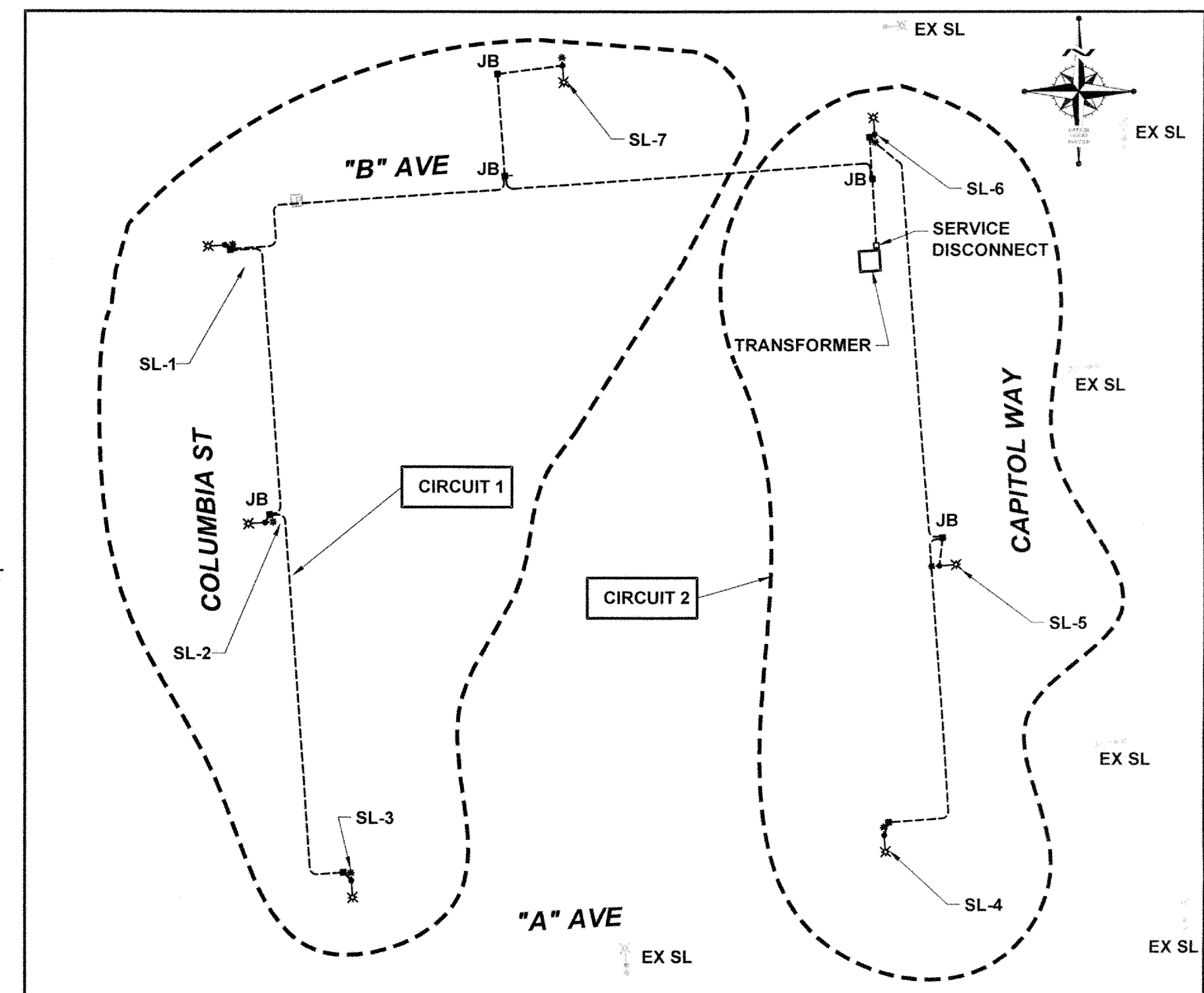
7. ALL LIGHTING POLES SHALL HAVE TAPERED ROUND SHAFTS WITH A LINEAR TAPER OF BETWEEN 0.125 AND 0.14 INCHES PER FOOT. IN EXISTING DEVELOPED AREAS, THE CITY MAY APPROVE/REQUIRE USE OF OTHER POLES TO ESTABLISH CONSISTENCY WITHIN THE DEVELOPED AREA.

8. MOUNTING HEIGHTS, ARM LENGTH, POWER SOURCE, LUMINAIRES AND BOLT PATTERNS SHALL BE AS FOLLOWS:
MOUNTING HEIGHT: 30' 12 FT.
ARM LENGTH: 6 FT.
POWER SOURCE: 240 VAC, SINGLE PHASE, 3 WIRE
LUMINAIRE TYPE: 200 / 50 WATT, HIGH PRESSURE SODIUM
FLAT LENS, MEDIUM CUTOFF, I.E.S.
TYPE 3 DISTRIBUTION
BOLT PATTERN: 4 BOLT, 1 1/2" DIAMETER BOLT CIRCLE

9. CEMENT CONCRETE BASES SHALL FOLLOW CITY OF OLYMPIA STREETLIGHT STANDARD PLAN 4-33. CONDUIT SHALL EXTEND BETWEEN 3 AND 6 INCHES ABOVE THE CONCRETE BASE.

10. REFER TO STANDARD PLANS 4-30, 4-31, AND 4-31A FOR TYPICAL STREETLIGHT INSTALLATION LAYOUT.

11. ANY MODIFICATION TO APPROVED PLANS SHALL BE REVIEWED AND APPROVED BY THE CITY PRIOR TO INSTALLATION.



ONE LINE STREET LIGHT DIAGRAM

1" = 50'

THIS DRAWING DOES NOT REPRESENT A RECORD DOCUMENT, UNLESS CERTIFIED BY HATTON GODAT PANTIER.

ANY ALTERATIONS TO THE DESIGN SHOWN HEREON MUST BE REVIEWED AND APPROVED BY HATTON GODAT PANTIER.

NOTE: THE CONTRACTOR SHALL BE FULLY RESPONSIBLE FOR THE LOCATION AND PROTECTION OF ALL EXISTING UTILITIES. THE CONTRACTOR SHALL VERIFY ALL UTILITY LOCATIONS PRIOR TO CONSTRUCTION BY CALLING THE UNDERGROUND LOCATE LINE AT 811 A MINIMUM OF 48 HOURS PRIOR TO ANY EXCAVATION.

APPROVED FOR CONSTRUCTION

BY: _____ DATE: _____
Engineering Plans Examiner

APPROVAL EXPIRES: _____

SYMBOL INDEX

- J BOX
- HIGH MAST STREET LIGHT
30"/12" 200/50 WATT
W/ 6' MAST ARM
- SERVICE DISCONNECT
- EX ST. LIGHT

WIRING SCHEDULE

WIRE NOTE	CONDUIT SIZE	POWER	ILLUM	GROUND	REMARKS
1	2"	(3) #2		(1) #2	SERVICE
2	1-1/2"		(2) #8	(1) #8	CIRCUIT 1
3	1-1/2"		(2) #8	(1) #8	CIRCUIT 2
4	1-1/2"		(4) #8	(1) #8	CIRCUIT 1 & 2

LUMINAIRE SCHEDULE

STREET NAME	NO.	STATION	OFFSET	WATTAGE	CIRCUIT	STYLE
COLUMBIA ST.	SL-1	12+65.50	13' RT	200	1	HIGH MAST
COLUMBIA ST.	SL-2	11+55.00	21' RT	200	1	HIGH MAST
'A' AVE	SL-3	0+45.00	11.5' LT	200	1	HIGH MAST
'A' AVE	SL-4	2+56.00	14.5' LT	200	2	HIGH MAST
CAPITOL WAY	SL-5	11+19.00	15' LT	200	2	HIGH MAST
'B' AVE	SL-6	2+72.00	19' RT	200	2	HIGH MAST
'B' AVE	SL-7	1+51.00	17' LT	200	1	HIGH MAST

16-6491
received 11/30/16

DESIGNED BY: DS/DM
DRAWN BY: BJR/BSM
CHECKED BY: SDH
DATE: NOVEMBER 2016
SCALE: H 1" = 20'
V N/A

HATTON PANTIER
ENGINEERS AND SURVEYORS
3910 MARTIN WAY E, SUITE B
OLYMPIA, WA 98506
TEL: 360.943.1599 FAX: 360.567.6299
huttonpantier.com

TP# 910090000

COLUMBIA PLACE
500 COLUMBIA STREET NW, OLYMPIA, WA 98501

STREET LIGHTING PLAN

A PORTION OF SECTION 14, TOWNSHIP 18 N, RANGE 2 WEST, W.M.

AGENCY NO: 04-2629

SHEET: 13 OF 14
E:/dgn/05-000/05-099/CDs

INDEX: 05-099sl.dwg

JOB: 05-099