

- cut sheets/details of the exterior light fixtures that will be installed.

Irvington Manor 12" High Bronze Outdoor Wall Light

- Style # 2N105



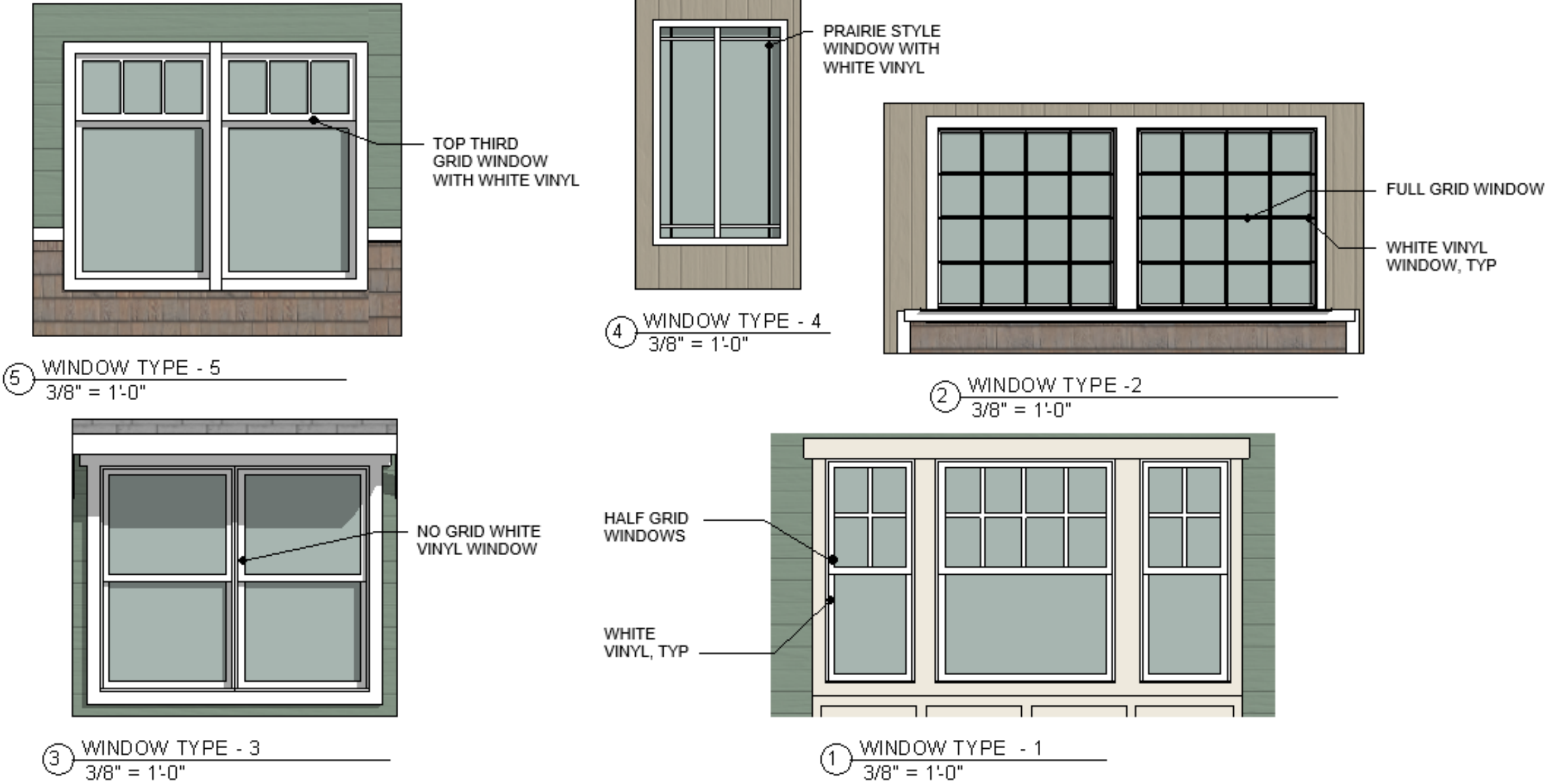
- indicate what type of pedestrian amenities that you are proposing. (Benches, planter boxes etc.).
 - No current amenities on site are being proposed.
- Are there mail boxes being installed at the street? If so, provide location and details of the type.

Salsbury Vertical Mailbox - 6 Doors - Aluminum - Surface Mounted - USPS Access





TYPICAL FRONT DOOR SW 6321 RED BAY



EXTERIOR DOOR AND WINDOW TYPES