



Olympia™

Highlights

May 1, 2017 Reports



Pear Blossom Place



Drexel House



Billy Frank Jr.

Recommended CIP Funding Awards

Award Length	Organization Name	Proposal Title	One Year Funding Amount
CIP (Basic Needs)			
1 Year Awards	YWCA of Olympia	The Other Bank	\$16,000
	SafePlace	SafePlace Community Services- Basic Needs	\$32,000
	Rochester Organization of Families	Emergency Needs	\$12,000
	Senior Services for South Sound	Senior Nutrition Program	\$32,000
	Thurston County Food Bank	Food Bank Collaborative	\$47,000
CIP (Collective Impact & Single Agency)			
3 Year Awards	TOGETHER!	Community Schools	\$202,449
	Child Care Action Council of Thurston County	Raising A Reader (RAR)	\$9,750
	CIELO Project/Radio Ranch	Connecting the Dots: Latino Kids, Their Parents, and School Success	\$38,870
	Behavioral Health Resources	School-based Support for At-Risk Youth in Olympia and Yelm	\$26,000
	Rochester Organization of Families	Kids' Place After-school & Summer Program	\$29,250
	Community Action Council of Lewis, Mason & Thurston Counties	Women, Infants & Children	\$14,908
	Pizza Klatch	Lunchtime Support Groups for LGBTQ+ Youth	\$22,750

Community Investment Partnership Awards

Housing (2163, 2060, CHG, HOME, ESG, HEN)			
1 Year Awards	Homes First	Homes First Community Housing Development	\$188,600
	Housing Authority of Thurston County	Golf Club and 14th Ave Affordable Housing	\$350,000
	Catholic Housing Services of Western Washington	Copper Trail Homeless Families	\$100,000
	Foundation For the Challenged	FFC XI	\$180,500
2 Year Awards	Family Support Center of South Sound	Coordinated Entry	\$100,000
	Community Action Council of Lewis, Mason & Thurston Counties	Housing & Essential Needs	\$1,478,800
	SafePlace	SafePlace Residential Program- Operations & Services	\$84,000
	Family Support Center of South Sound	Homeless Family Services	\$60,000
	Community Youth Services	High Risk Youth Services	\$150,000
	Family Support Center of South Sound	Pear Blossom Place: A Family Support Community	\$66,000
	Interfaith Works	Interfaith Works Emergency Overnight Shelter Program	\$288,256
	Catholic Community Services SW	Drexel House Permanent Supportive Housing	\$60,000
	Catholic Community Services SW	Drexel House Emergency Shelter	\$72,000
	Family Support Center of South Sound	Rapid Re-Housing for Homeless Families	\$186,244
	Community Youth Services	Young Adult Housing	\$99,000
	SideWalk	Rapid Rehousing Program	\$120,000
	SideWalk	Diversion Program	\$60,000
	Rochester Organization of Families	Rental Assistance	\$6,000

Community Investment Partnership Awards



PATHWAYS HOME

Seattle's Person-Centered Plan to
Support People Experiencing Homelessness

Pathways to Home

4/25/17



DRAFT

Thurston County, Washington
Homeless Housing
Five-Year Plan
2017



Five Year Plan



Emergency Overnight Shelter
Sheltering for the Health & Safety of All

IWshelter.org

WINTER WARMING CENTER

Open 7 days a week 7am-5:30pm

for guests to find daytime respite, warmth, and connection to services

December 19, 2016 through March 31, 2017

LOCATED AT:



Warming Center Debrief

Homeless System Gaps Analysis

For Thurston County's Homeless Housing and Services System

2013 Gaps Analysis

REVISED Olympia Area Homeless Shelters & Capacities

The chart below presents info on homeless shelters by name, location; Conditional Use Permits (CUP) restrictions (if codified by CUP or other decree); year-round shelter capacity; winter capacity (aka cold weather or over-flow capacity). All information is current as of 3/21/17

Shelter Facility	Population	Location	Date/# of CUP	Annual # Beds/Restrictions	Emergency Cold Weather Beds
Family Support Center Pear Blossom Place	Families	837 - 8th Ave SE	12/3/12 #12-0097	28 Beds & infants/Per CUP	20 Winter Beds
Community Youth Services Rosie's Place	Young Adults 18-25	520 Pear SE	7/7/14 #14-0052	12 Per CUP	5 Winter Beds
Community Youth Services Haven House	Youth under 17	Eastside SE	#16-9119	12 Beds (2017 CUP update)	0
Drexel House	Single Adults	604 Devoe SE	N/A - Zoned for Shelter	16 Beds	0
Interfaith Works/1st Christian	Single Adults	701 Franklin SE	11/10/14 #16-9082	42 Beds Per new 2016 CUP	0 (Per CUP)
Salvation Army	Single Adults	824 5th Ave SE	N/A - Zoned for Shelter	0 -Converted to Transitional Housing	29 Winter Beds
St. Michael's Overflow	Single Men	1208 11th Ave SE	City Memo	Winter Beds only (alternates Olympia & Lacey)	18 Winter Beds (Per City memo)
Sacred Heart Church Overflow	Single Men	812 Bowker St NE	N/A - Lacey jurisdiction	See Above	Included above
Safeplace	DV Victims	Thomas St	Confidential	28 + infants	0

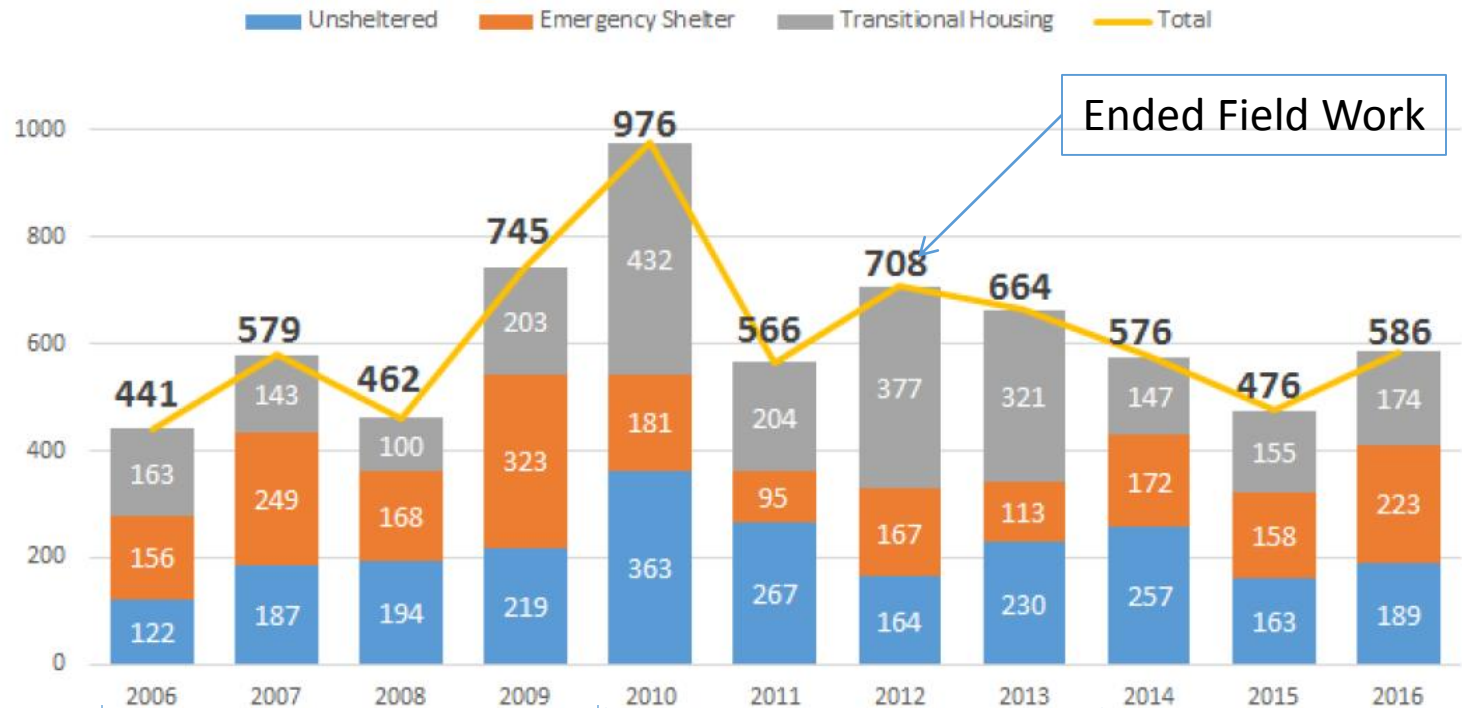
TOTALS

POPULATION	Year-Round	Winter (AKA Cold Weather or Overflow)	TOTAL SHELTER BEDS
Single Adults	58 Beds	47 Additional beds	105
Domestic Violence Victims	28 Beds & infants	0 Additional beds	28
Families with Kids	28 Beds & infants	20 additional beds	48
Young Adults 18 - 25	12 Beds	5 Additional Beds	17
Youth 12 - 17	12 Beds	0 Additional beds	12
Totals:	138 Beds (For specific populations)	72 Additional cold weather beds	210 TOTAL BEDS

For more information: Anna Schlecht aschlecht@ci.olympia.wa.us (360) 753-8183

Shelter Capacity

Thurston County PIT Count Totals: 2006 - 2016



County Led

City Led

County Led

Point In Time Homeless Census

In 2012 Bellingham voters approved a property tax levy of \$21 million over a 7-year period (2013-2019) to provide, produce, and/or preserve affordable housing. 2/3rds of the funding must benefit those households earning less than 50% of the Area Median Income (AMI).



Bellingham Experience



n Nov. 8, 2016, Vancouver voters approved Proposition 1, establishing an Affordable Housing Fund for very low-income households earning 50 percent or less of the area median income (AMI).

\$42 Million for Vancouver Families

Money for the fund will be generated by a property tax levy of \$42 million over seven years (\$6 million a year). The levy is 36 cents per \$1,000 of assessed value of a property. For a home valued at \$250,000, this would equate to a property tax increase of \$90 per year, or \$7.50 per month.

Vancouver Experience

I want to...



Contact Information

Peggy Sheehan
Community Development
Grants Manager
(360) 487-7952
peggy.sheehan
@cityofvancouver.us

[View Full Contact Details](#)

Ordinances Protecting Vulnerable Renters

Recent changes in the Vancouver housing market have resulted in unusually low vacancy rates and a dramatic increase in rental costs. From July 2014 to July 2015, rents inside the city increased by 9.8 percent. The current vacancy rate is approximately two percent. Incomes have not kept pace with rent increases.

To address these concerns, the City of Vancouver has enacted three new ordinances designed to provide some protection for vulnerable renters. The ordinances take effect on Oct. 21, 2015 for properties located in the City of Vancouver.

- [45-day Notice of Rent Increases](#)
- [60-day Notice to Vacate](#)
- [Source of Income Protection](#)

**FOR
RENT**

Vancouver Experience

City applies to build homeless day center

New facility borders Share House, will offer services



An interior view of the new day center for the homeless at Friends of the Carpenter in 2015 The city of Vancouver has applied to build a new day center to serve homeless people. (Columbian files)

By [Patty Hastings](#), Columbian Social Services,



Vancouver Experience

Community Streets Initiative

At the direction of Mayor Stephanson, the City convened a task force of community members, business owners and service providers in July 2014 to focus on street-level social issues in Everett's urban cores and develop recommendations that could be implemented by the community. The task force released their [final report and recommendations](#) in November 2014.

- [View meeting materials](#)
- [August 2015 Progress Report](#) (PDF)
- [May 2015 Progress Report](#) (PDF)
- [Draft implementation plan](#)
- [Watch videos of task force meetings](#) (YouTube)

Task Force Mission

In order to foster a vibrant and healthy community, the task force will seek to better understand the street-level social issues in Everett's commercial-core areas and identify potential short- and long-term actions for the community to address those issues.

Task Force Members

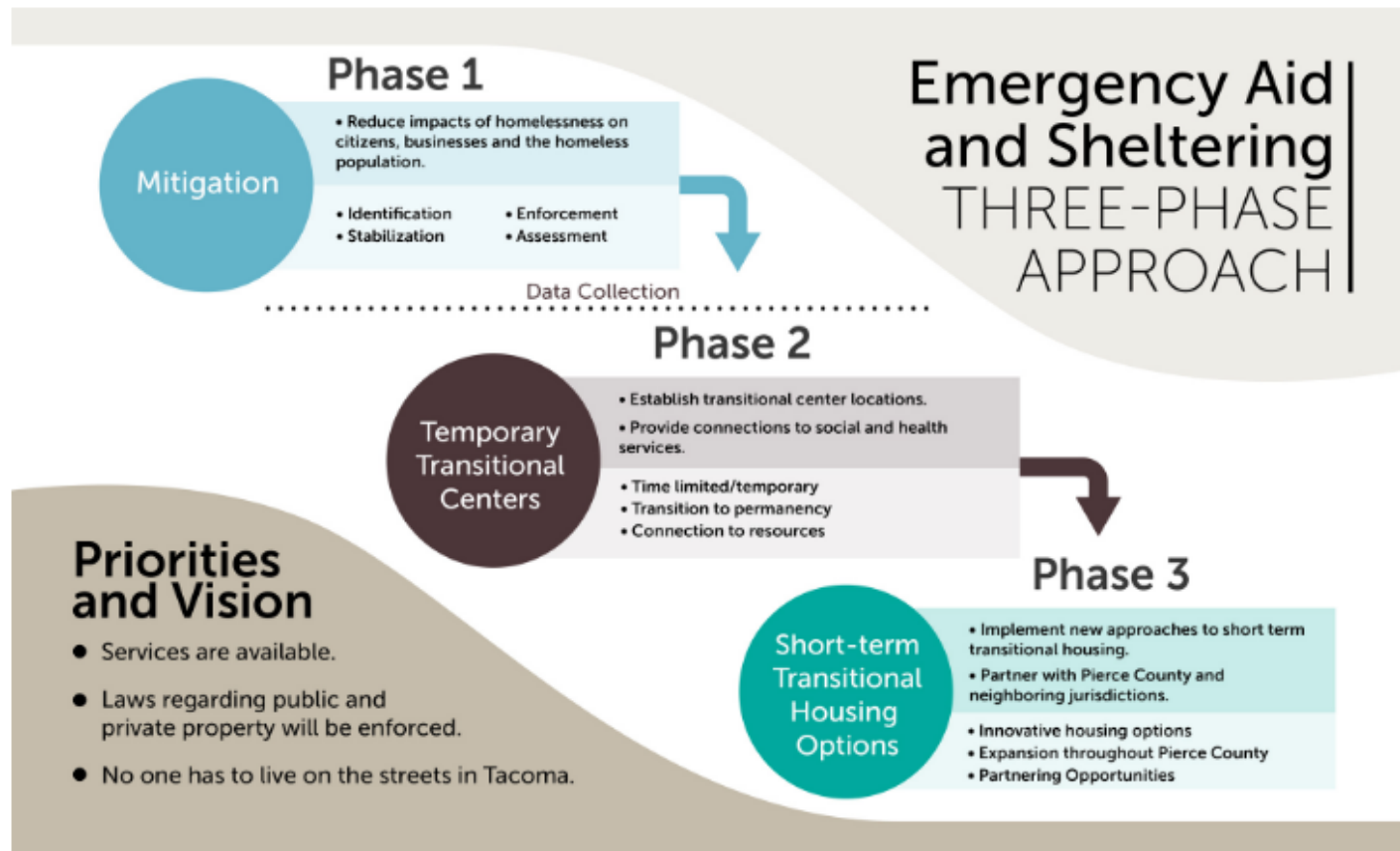
Co-Chairs

- Chris Adams, Adams and Duncan Law
- Sylvia Anderson, Everett Gospel Mission
- Jonathan Apuan, Salvation Army
- Glen Bachman, Everett Mall
- Sophia Beltran, Lutheran Community Services Northwest Family Support Centers in Everett
- Flora Diaz, O'Loane Nunn Law Group
- Bob Dobler, Gamut360 Holdings
- Alan Dorway, First Presbyterian Church
- Megan Dunn, Human Needs Advisory Committee
- Cassie Franklin, Cocoon House
- Linda Grant, Evergreen Manor
- GeorgaDee MacLeod, Council of Neighborhoods
- Mark Mantei, Everett Clinic
- Mark Nysether, Sea-Dog Corporation
- Ed Petersen, HopeWorks
- Renee Quistorf, Renee's
- Bob Reese, Volunteers of America
- Marilyn Rosenberg, Cafe Zippy
- Matthew Savage, Journey Church
- Tom Sebastian, Compass Mental Health
- Craig Skotdal, Skotdal Real Estate
- Joyce Stewart, Everett School District
- Julie Zarn, Providence Regional Medical Center

City and County Representatives

- Bob Downey, Asst. Fire Chief, Everett
- David Hall, Deputy City Attorney, Everett
- Deborah Wright, Executive Director, Neighborhoods & Community Services
- Dan Templeman, Chief of Police, Everett
- Ken Stark, Director of Human Services Division, Snohomish County
- Ty Trenary, Snohomish County Sheriff

The City has allocated \$9 million this biennium for homelessness services, which is a 48 percent increase over its 2015-2016 investment. The City will continue to invest in mental health services, substance use treatment, stable housing, sanitation services and safety. In addition to service provision for people experiencing homelessness, the City will continue to implement encampment cleanup approaches and work with property owners to ensure that sites are clean and safe.



City of Tacoma Experience

Community	Levy	Date	Amount/ 7 years	Target
Seattle	Yes	2009, 2016	\$290,000,000 (\$41million per year)	Production, Preservation, Rental Assistance/ Homelessness Prevention
Everett	No	2014	NA	Community Streets Initiative 63 recommendations
Bellingham	Yes	2012	\$21,000,000 (\$3 million per year)	Production, Preservation, Rental Assistance/ Homelessness Prevention
Vancouver	Yes	2016	\$42,000,000 (\$6 million per year)	Production, Preservation, Rental Assistance/ Homelessness Prevention
Tacoma	No	2017	NA	Immediate Shelter

Community Response Summary

Community	Task Force	Membership	Timing	Levy	Outcome
Tacoma	No – Driven by the Mayor and Council	None	None	No	Declaration of Public Health Emergency
Bellingham	No- Driven by a nonprofit coalition	12+ Housing & Homeless Organizations	March 2012 June: Council adds to ballot	Yes	240+ units of affordable housing. Homelessness remains a pressing issue
Vancouver	Yes	Advisory Board, 21 members including 3 Councilmembers	May-December 2015	Yes	Suggested code revisions, rental protection and levy
Everett	Yes	23 members (City non-voting members)	July-November 2014	Under consideration county-wide	63 action items to address street level issues

Community Response Summary



OLYMPIA DOWNTOWN STRATEGY

VOLUME 1: SUMMARY

Downtown Strategy Recommendations

SIDE WALK

He's happy in his new home.
Hundreds of others have new homes too.

Volunteer or donate. Together we will end homelessness.

Homeless? Looking for assistance? Call the hotline: 1-844-628-7343

**COMMUNITY
youth
SERVICES**

[About](#) [Programs](#) [Get Involved](#) [Donate](#) [Resources](#) [FAQ](#) [Youth Zone](#)

New Directions. Brighter Futures.



**COMMUNITY
YOUTH SERVICES**

CYS, a United Way affiliate, has been a successful and established non-profit in downtown Olympia for more than 45 years, providing an array of services to help a wide range of youth: those in foster care, those who need help finishing their educations or getting a job or finding a safe place to live, and those seeking meaningful ways to connect with society in a positive way. About 4,000 youth – and their families – seek our services annually. We offer 20 different programs that work singly and together to help young people become independent, successful adult members of society.

Want to help? We're always looking for donations of time, funding or needed gently used items. Call us at 360-943-0780 to learn more.

**COMMUNITY
youth
zone**
CYS YOUTH PORTAL
[ENTER >](#)

QUICK ANSWERS

- » What is needed NOW at CYS?
- » How can I give to CYS?
- » Do you have volunteer opportunities?
- » Do you have employment opportunities?
- » Where can I find driving directions?
- » More FAQ



Coordinated Entry and Vulnerability Index

- What is the relationship between the homelessness and affordable housing funding and the Public Safety funding?
- Do you want to declare a housing emergency?
- What is the best timing of a referendum?
- Do you prefer property tax or sales tax?
- Would you want to limit the maximum amount collected under the levy to \$2.29 million per year?
- What length of time would you want to set the levy or tax for?
- Who is your target population or populations?
- How would you plan to use these funds?
- How do you want to manage this program?
- Would you want to include a Citizens advisory committee?

Policy Questions Related to the Home Fund

- **Vulnerable Renter Protections**
- **ADUs**
- **Start dialogue now for a 2017 Warming Center**

Other Policy Questions



Thank You

Steve Hall, City Manager | Keith Stahley, Director Community Planning and Development

- Bellingham:
- Vancouver:

(Evictions start

2012

2016

Ballot options

February 14

April 25

Aug 1 (primary)

Nov 7 (general)

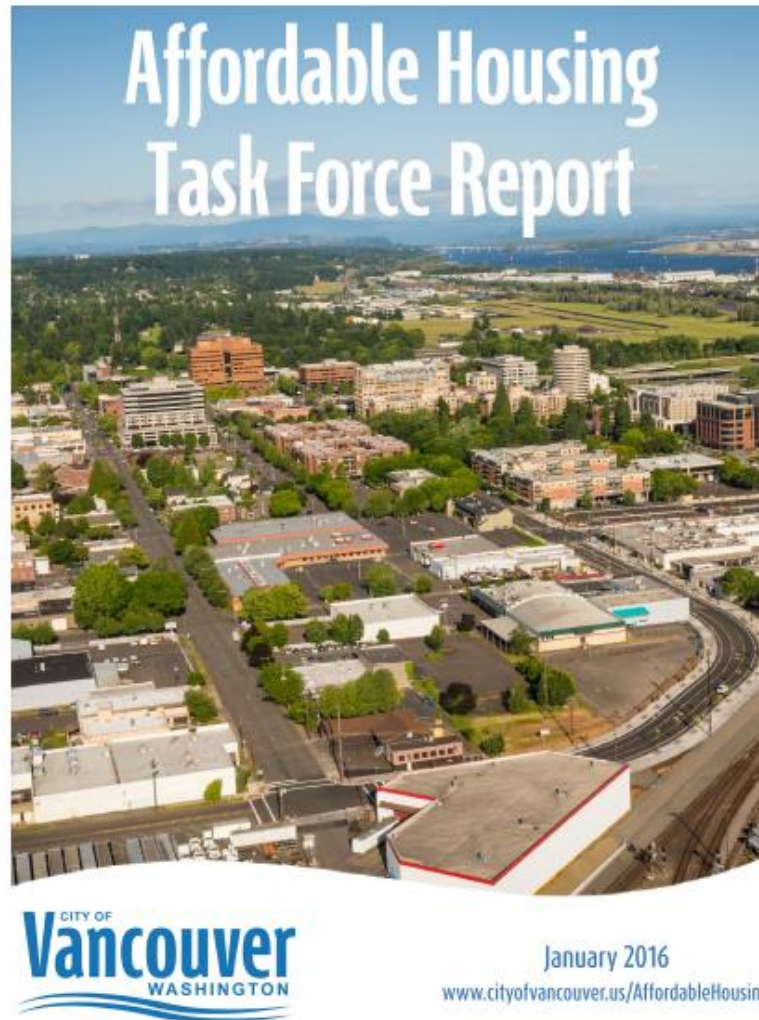
City deadline

December 9, 2016

February 21

May 9

July 25



2017 election dates