

US 101 / West Olympia Access Project

BICYCLE AND PEDESTRIAN ADVISORY COMMITTEE
July 19, 2017

Project Partners: CITY OF OLYMPIA
WSDOT

Consultant Team: PARAMETRIX
SCJ ALLIANCE

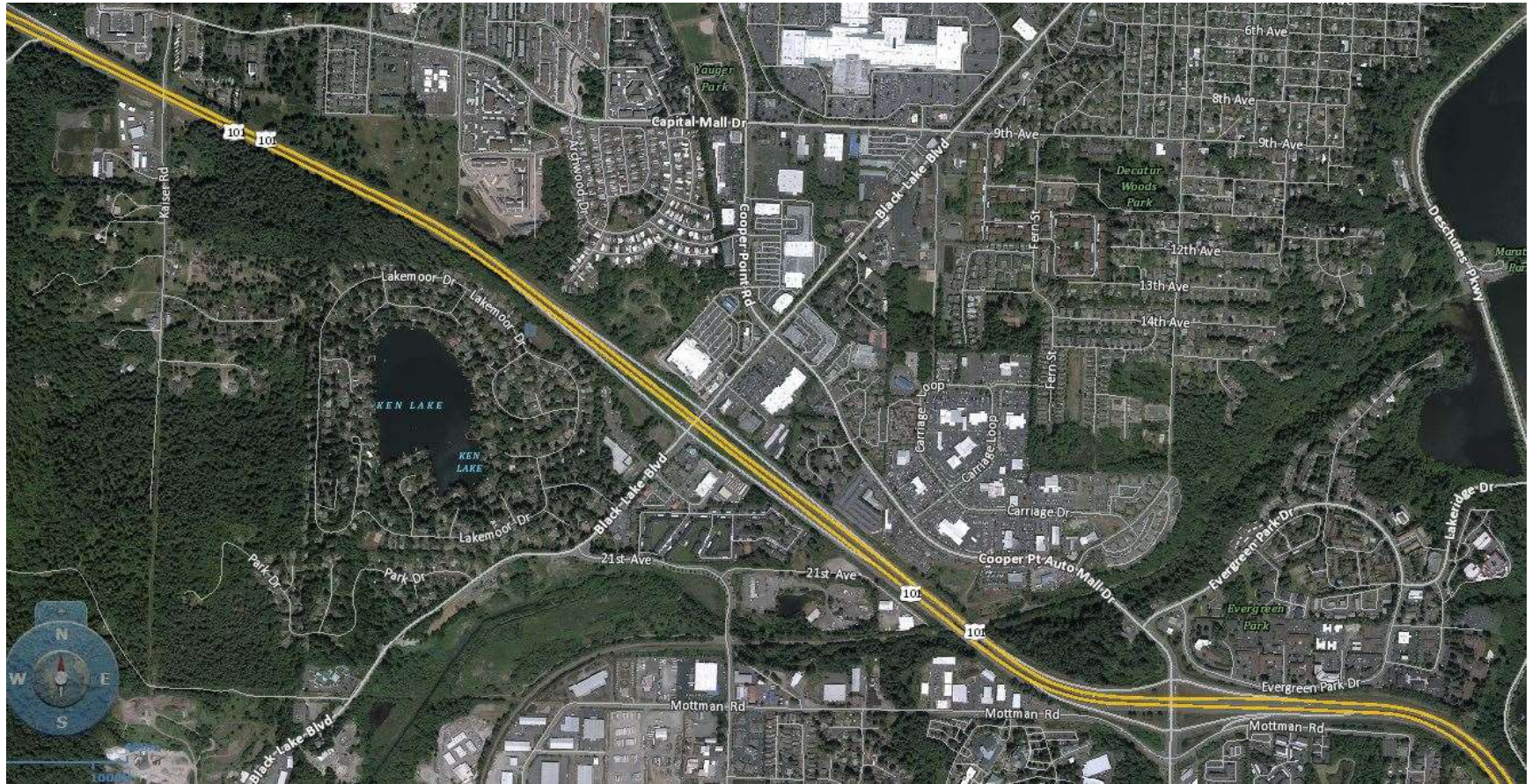
OVERVIEW

- Project Overview
- Environmental Review
 - Noise
 - Stormwater
- Traffic Operations
- Project Status



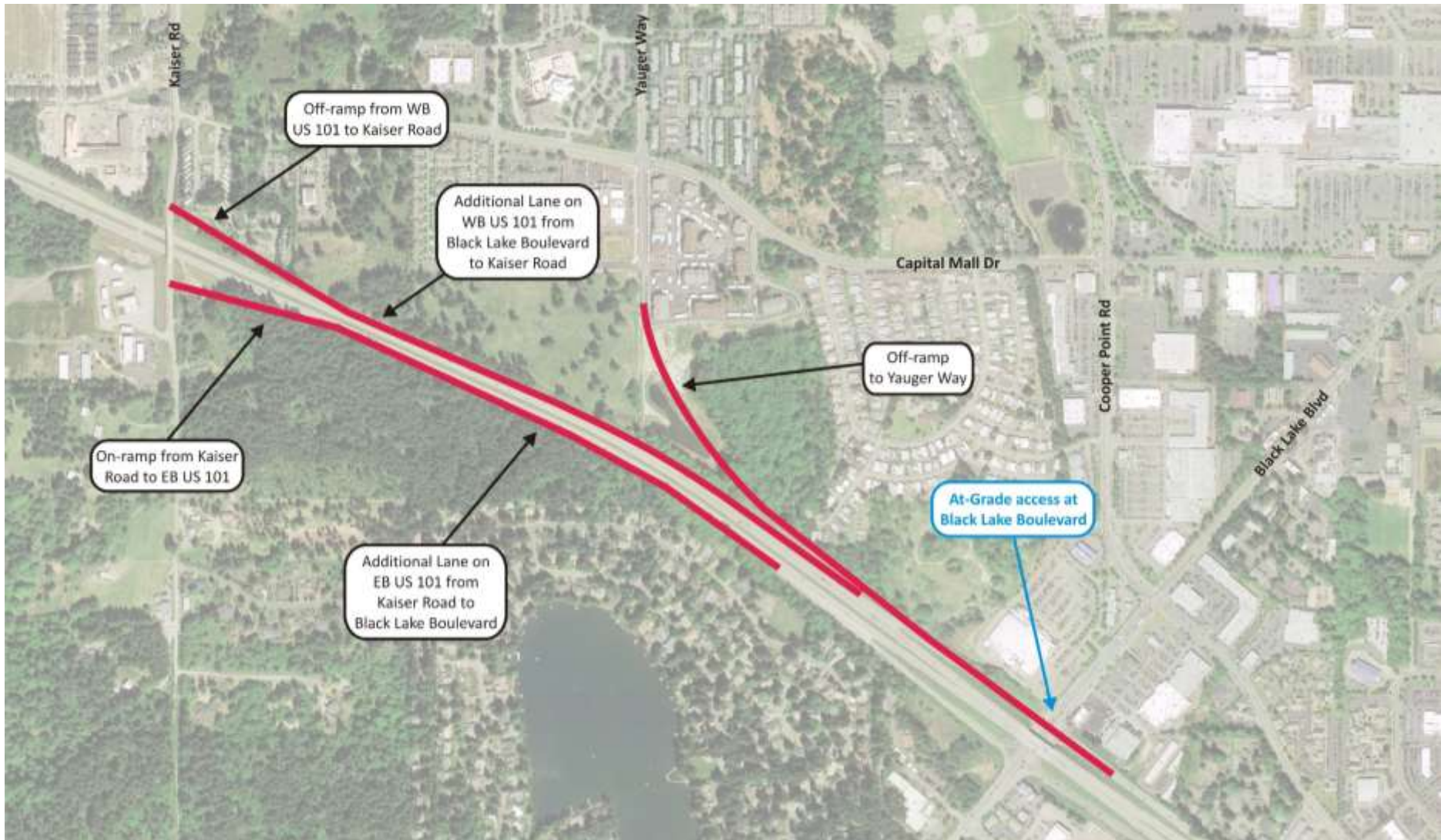
PROJECT OVERVIEW

BACKGROUND

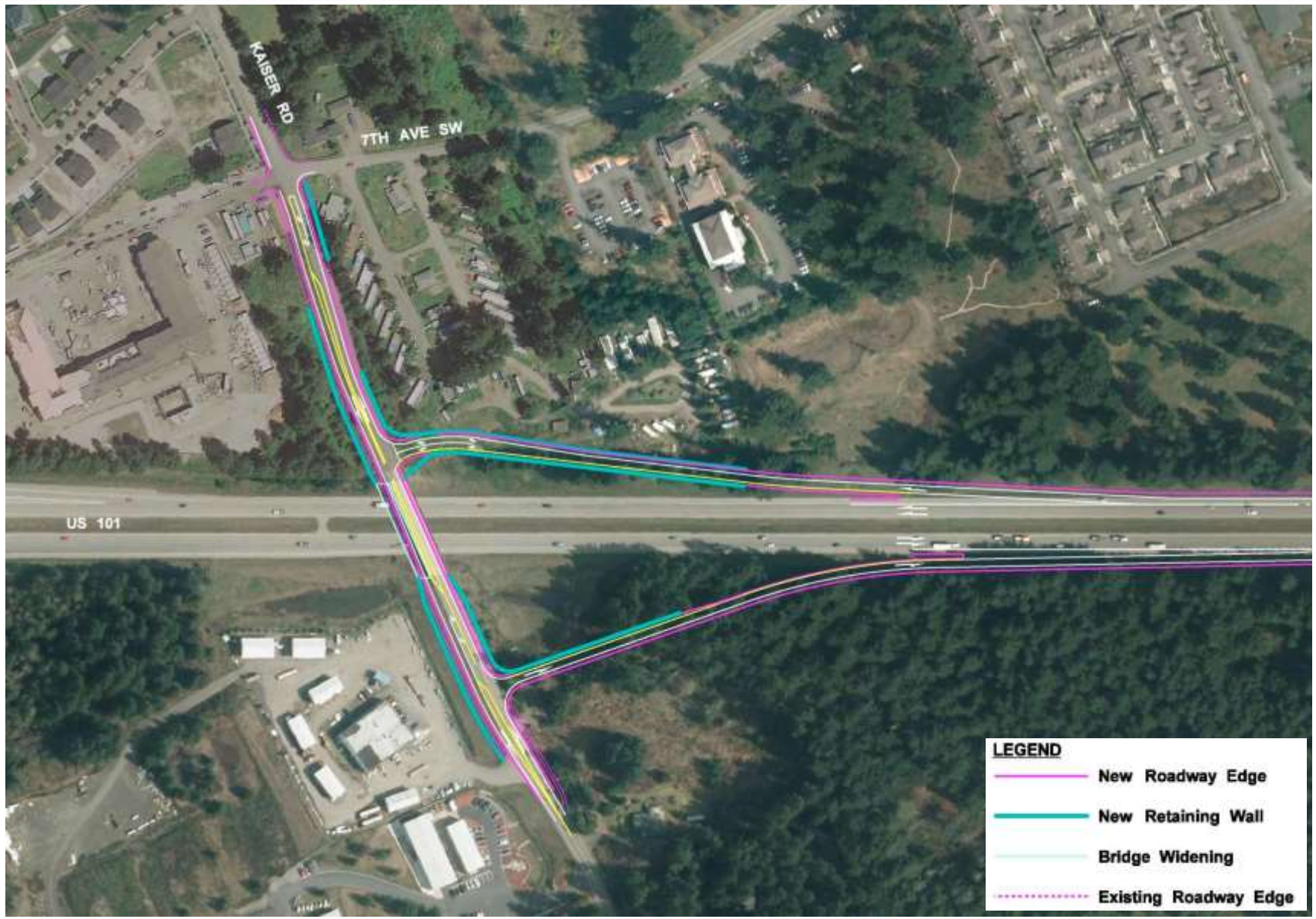


PREFERRED ALTERNATIVE

Preferred Alternative



PRELIMINARY DESIGN – KAISER ROAD



PRELIMINARY DESIGN – YAUGER WAY



PRELIMINARY DESIGN – BLACK LAKE BLVD





ENVIRONMENTAL REVIEW

SEPA ANALYSIS UPDATE

Noise Findings:

- Noise Wall A is located adjacent to Coach Post Mobile Home Park



NOISE

NOISE EVALUATION KEY

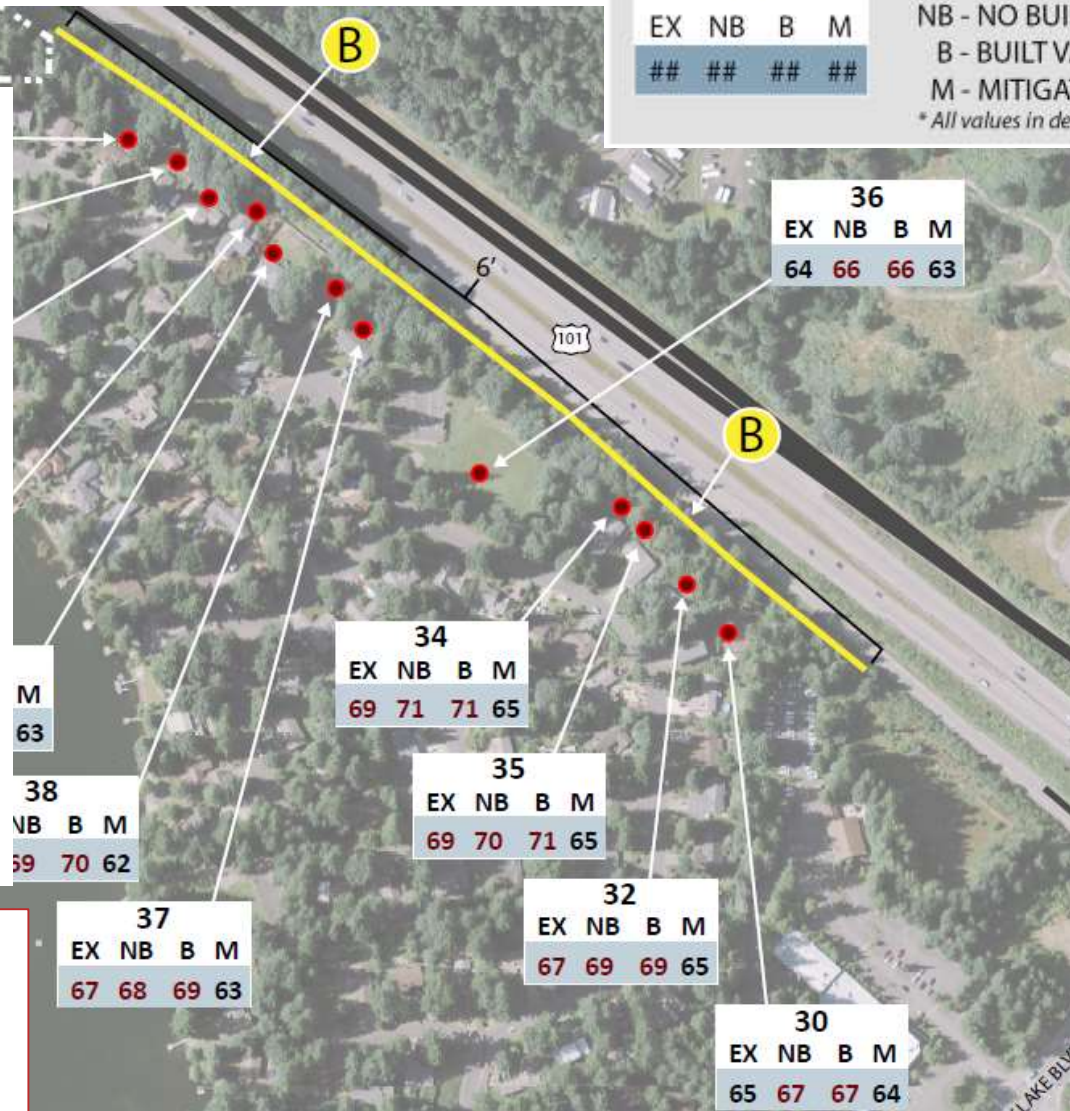
46

EX	NB	B	M
##	##	##	##

EX - EXISTING VALUE
NB - NO BUILD VALUE
B - BUILT VALUE
M - MITIGATED VALUE
** All values in decibels (dB)*

Noise Findings:

- Noise Wall B is located adjacent to the Lakemoor/Ken Lake Community



Impacted Noise Reciever



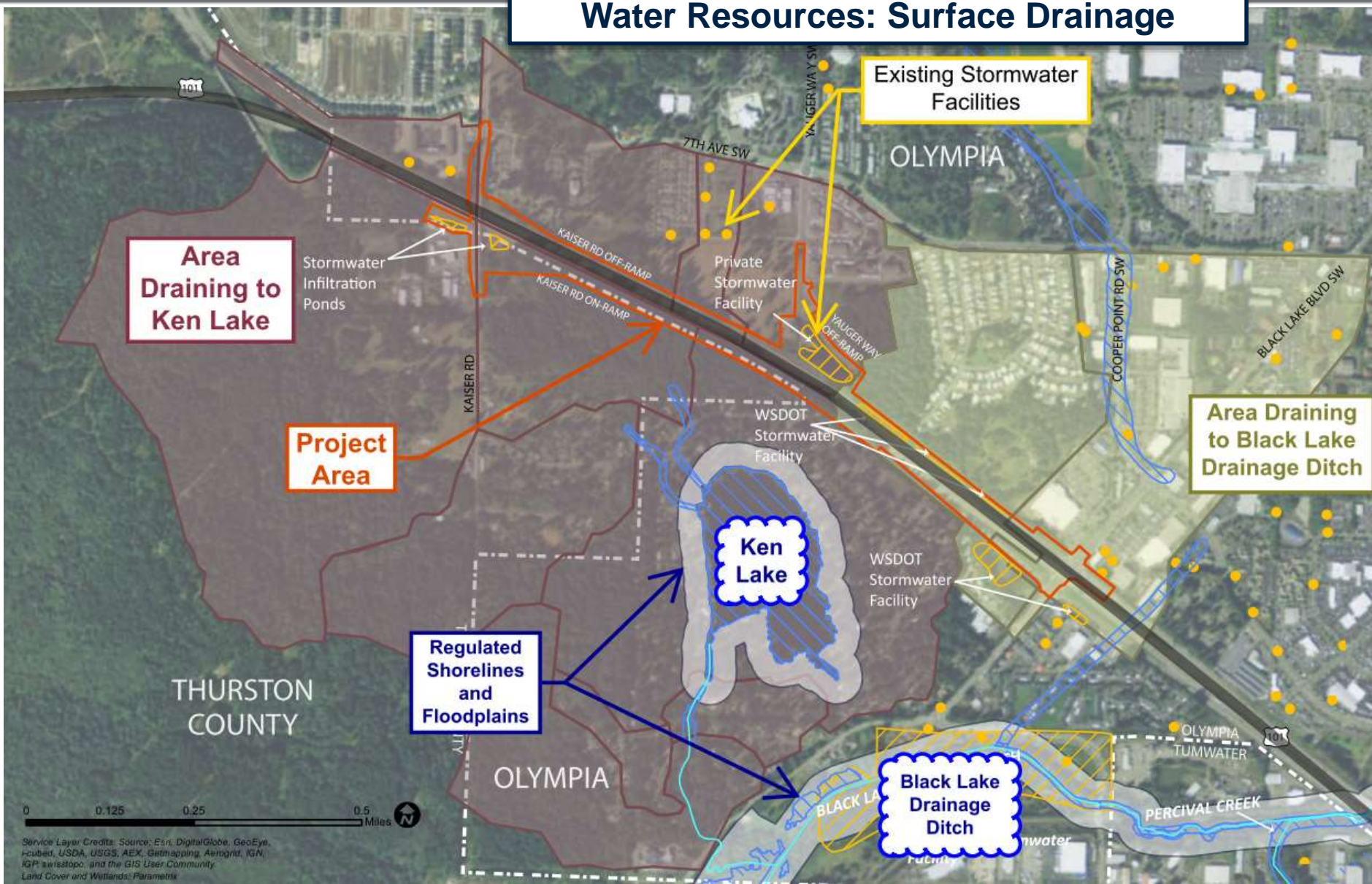
Noise Wall



STORMWATER

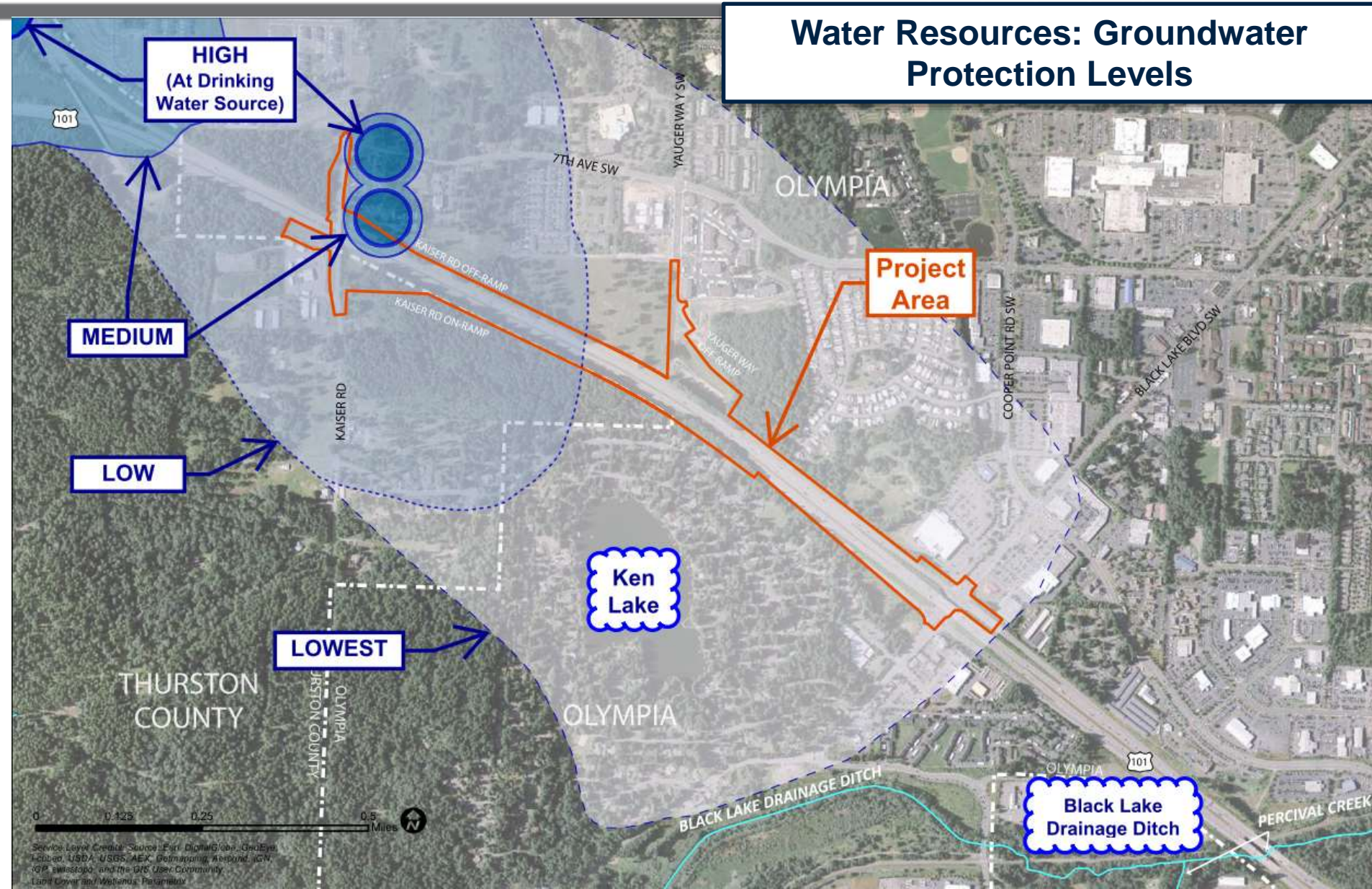
STORMWATER

Water Resources: Surface Drainage



STORMWATER

Water Resources: Groundwater Protection Levels



STORMWATER

Proposed Stormwater Management: Take-Home Points

Enhanced water quality
treatment of all new and
some existing untreated
pavement

=

Same or cleaner
than existing conditions

Infiltrate runoff
from all new and
some existing untreated
pavement

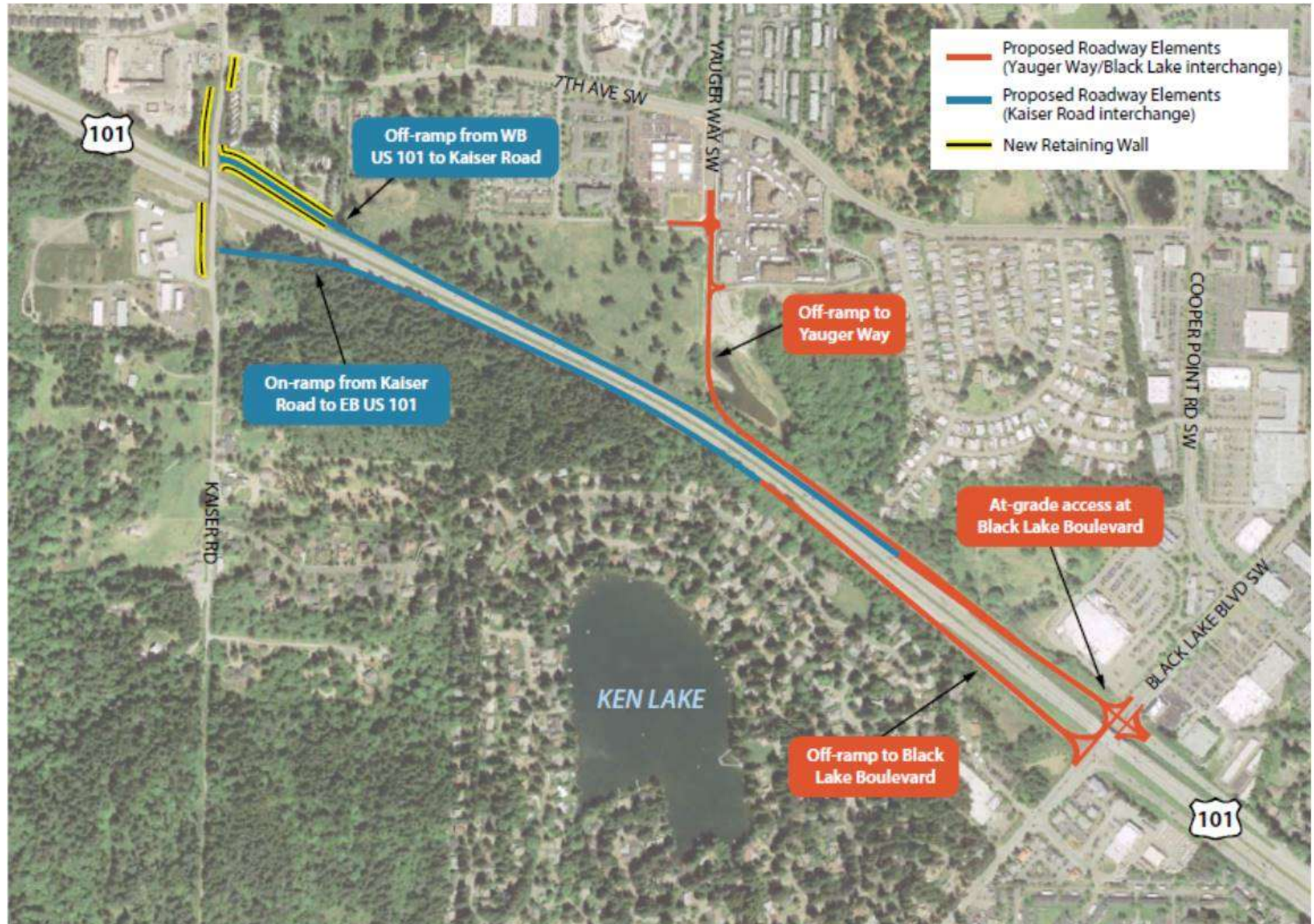
=

Same or more
groundwater recharge,
same or more
stream protection

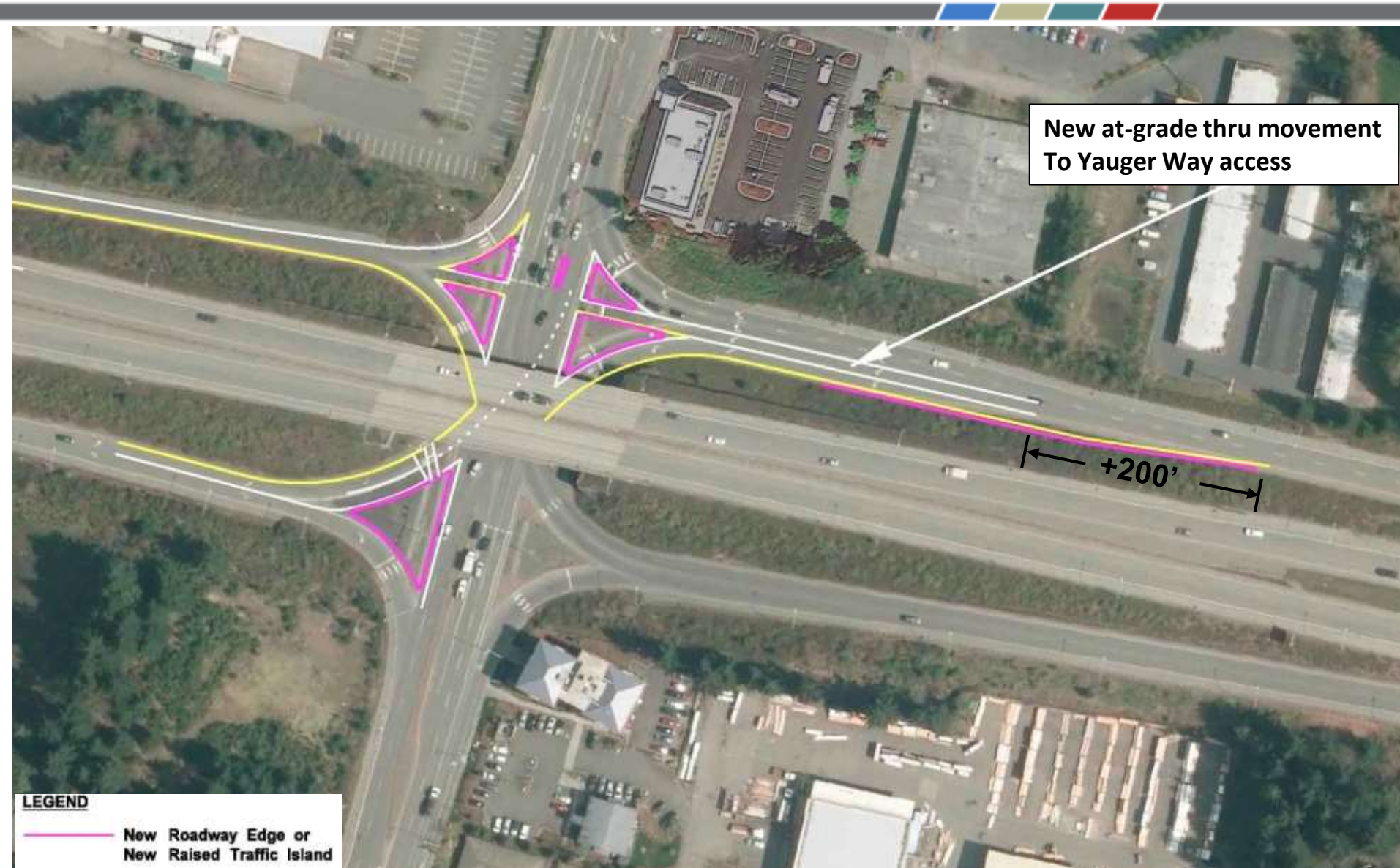


TRAFFIC OPERATIONS

PREFERRED ALTERNATIVE



PRELIMINARY DESIGN – BLACK LAKE BLVD



OPERATIONAL ANALYSIS & RESULTS

Projected 2040 Traffic Volumes - Preferred Alternative



MAJOR MILESTONES

- Completed Interchange Justification Report Documentation
- Completed Environmental Studies
- Completed Right-of-Way Plans

NEXT STEPS

- Prepare Information for Potential Grant
- Seek Funding for Design, Right-of-Way, and Construction

Discussion - Questions