



# ArCH Background: Heritage & Cultures Resources

Resource or Program	Numbers	Notes
Number of individually designated historic properties	771	Individually designated &/or designated within a historic district
Number of designated historic districts	5	3 National Register of Historic Places 2 Olympia Heritage Register
New additions to Olympia Heritage Register	6 since 2013	3 residential; 3 Downtown commercial
Number of current Special Valuation contracts	10	Special Valuation is the state's property tax relief program for rehabilitation of a designated historic property; 1 of these properties also successfully participated in the (federal) Preservation Tax Incentive program 1 due to be submitted (222 Market)
Value of current Special Valuation contracts	\$888,417.00 since 2014	= The amount of private investment in the rehabilitation, which is then deducted from the property value for tax determination purposes; Estimated value of 1 due to be submitted = \$1,200,000.00 (222 Market)
Number of historic property rehabilitation permits reviewed	25-35 annually	Typically 1/3 are reviewed by the Heritage Commission, 2/3 by staff; Sharp rise in 2017
Rehabilitation outreach to member of the public	1-4 times per month	Phone or on-site advice by staff or Heritage Commission
Preservation Month & ad-hoc outreach activities	2-4 per year	May of each year. "This Place Matters" theme selected by the Heritage Commission & staff reaches out to other interested community groups to develop a series of public events. <b>2016:</b> Olympia's labor history <b>2017:</b> Olympia oyster Other outreach events in partnership with different heritage organizations. <b>2017:</b> Joint lectures with OHS&BHM & WSHS <b>2017:</b> Capital City Modern Tour Day with DOCOMOMO WEWA
Preservation Awards	1-3 per year	Fall of each year. Awards given out to people or organizations who exemplify excellence in historic preservation (projects) or serve as champions for Olympia's historic places <b>2015:</b> - Owners & businesses of the Wildwood Building (rehabilitation); - Lauren Danner (for successfully placing her mid-century home on the National Register of Historic Places, Olympia's first mid-century home to achieve this milestone) <b>2016:</b> - Sean Kirby, owner of the Trena & Leo Belsito House (rehabilitation); - Thurston-Lewis-Mason Central Labor Council (for celebrating the places of Olympia's rich labor history)

Resource or Program	Numbers	Notes
Historic property surveys	3 since 2015	<b>2015:</b> Mid-century residential neighborhoods (ca. 400 houses in 4 neighborhoods) <b>2017 grant</b> (state = \$18,000; county = \$5,000): Downtown (all buildings on ca. 85 blocks) <b>2018 grant</b> (state = \$20,000; county = pending): Priest Point Park cultural resource survey and management plan
Grants for heritage projects	\$60,000 (anticipated \$65,000) since 2014	<b>2014 = \$5,000:</b> SS TJ Potter alley mural (Thurston County) <b>2015 = \$12,000:</b> Mid-century residential survey (Washington State Department of Archaeology & Historic Preservation) <b>2017 = \$23,000:</b> Downtown survey (Washington State Department of Archaeology & Historic Preservation [\$18,000] and Thurston County [\$5,000]) <b>2018 = \$20,000+:</b> Priest Point Park cultural resource survey and management plan (Washington State Department of Archaeology & Historic Preservation [\$20,000]; in progress application for Thurston County grant [anticipated \$5,000])
Tribes which have indicated an interest in Olympia	6	According to the Washington State Department of Archaeology & Historic Preservation*: - Confederated Tribes of the Chehalis Reservation - Confederated Tribes and Bands of the Yakama Nation - Cowlitz Indian Tribe - Nisqually Tribe - Puyallup Tribe - Squaxin Island Tribe <i>* Subject to change</i>
Recorded archaeological sites in city limits	23	According to the Washington State Department of Archaeology & Historic Preservation, which estimates that less than 5% of the state's land mass has been surveyed; precise location of archaeological sites protected by state law
Olympia's potential for archaeology	Very high (highest classification)	According to the Washington State Department of Archaeology & Historic Preservation's predictive model, in which proximity to water is a high risk factor
Staff review of State Environmental Policy Act (SEPA) checklists to ensure protection of historic, cultural, and other Tribal resources	5-15 per year	Involves outreach to interested Tribes (typically Nisqually and Squaxin Island) and Department of Archaeology and Historic Preservation; results in mitigation intended to protect damage and/or destruction of significant resources
Staff intervention in reported disturbance of archaeological site	3 since 2016	Precise location of archaeological sites protected by state law
Salish Sea (Puget Sound) Canoe Journeys	1 per year	The City of Olympia's Director of Strategic Communications (Kellie Purce Braseth) handles these when hosted by regional tribes

**Other Resources:**

Thurston County's [Certified Local Governments](#):

- City of Lacey (Lacey Historical Commission; Staff Liaison: Erin Quinn Valcho)
- City of Olympia (Olympia Heritage Commission)
- City of Tumwater (Tumwater Historic Preservation Commission; Staff Liaison: Chuck Denney)
- Thurston County (Thurston County Historic Commission; Staff Liaison: Cami Pederson)

Thurston County's (only) [Main Street Program](#):

- Olympia Downtown Association

Examples of regional organizations which represent interests in Olympia's heritage and cultures:

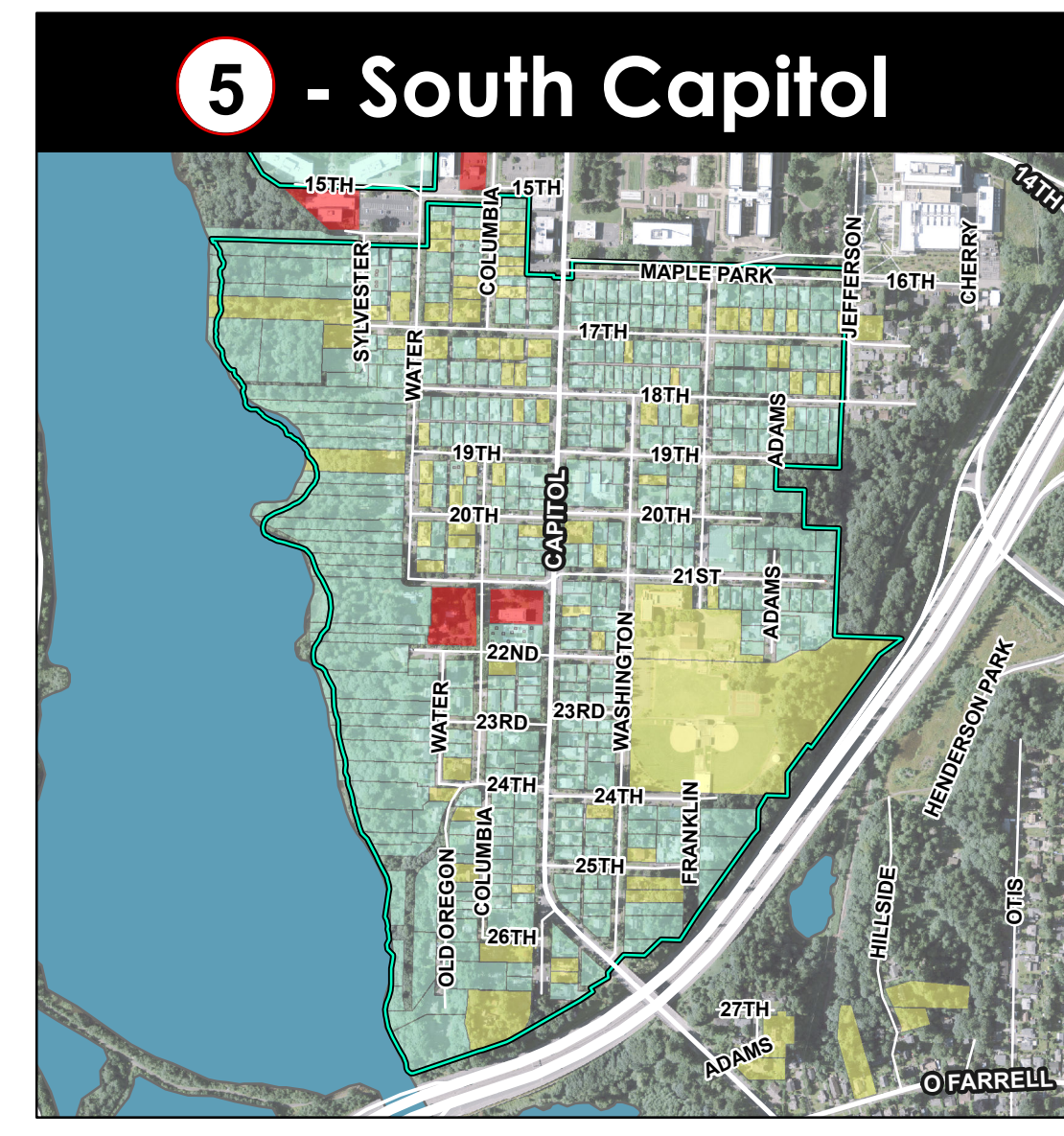
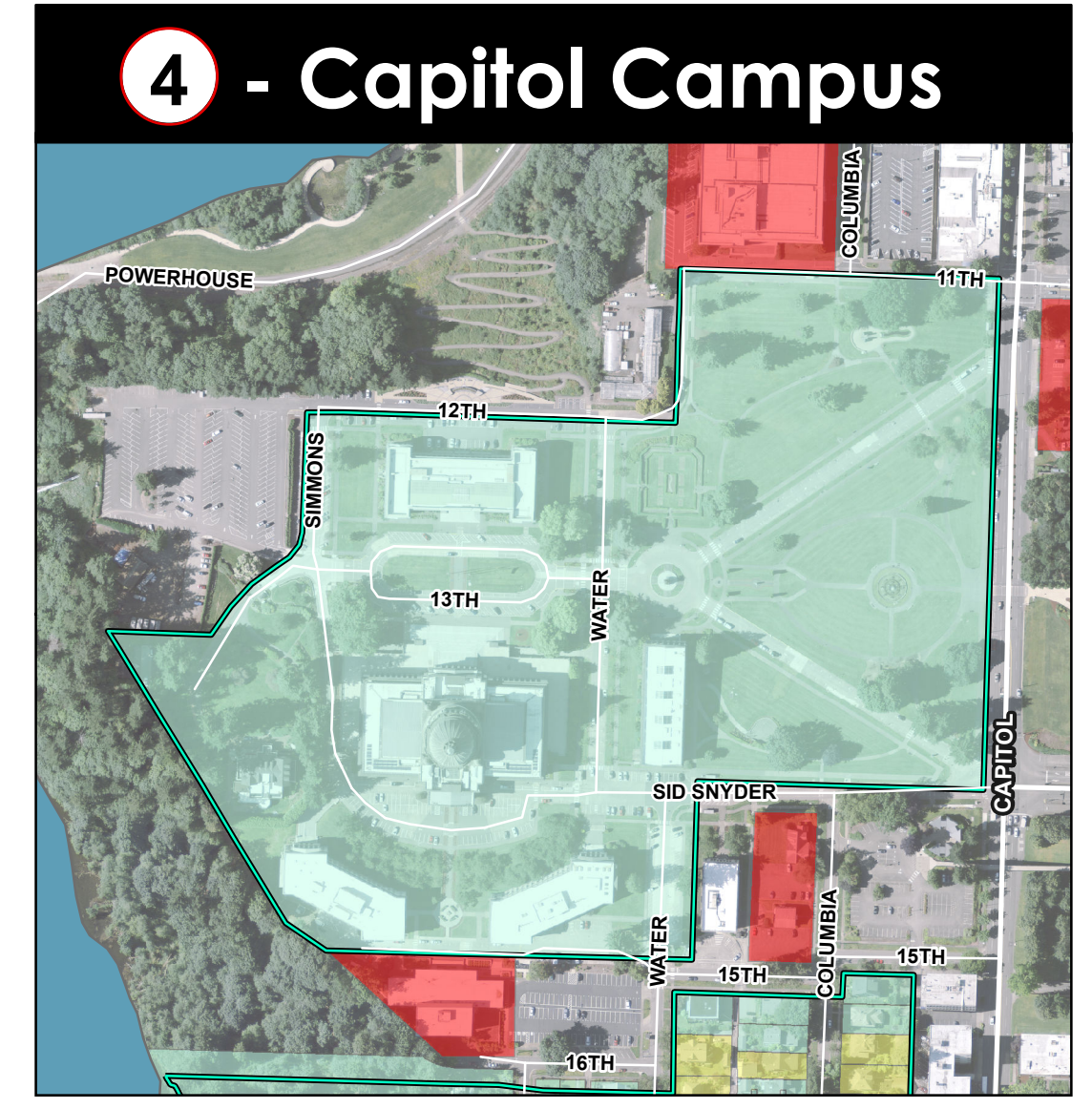
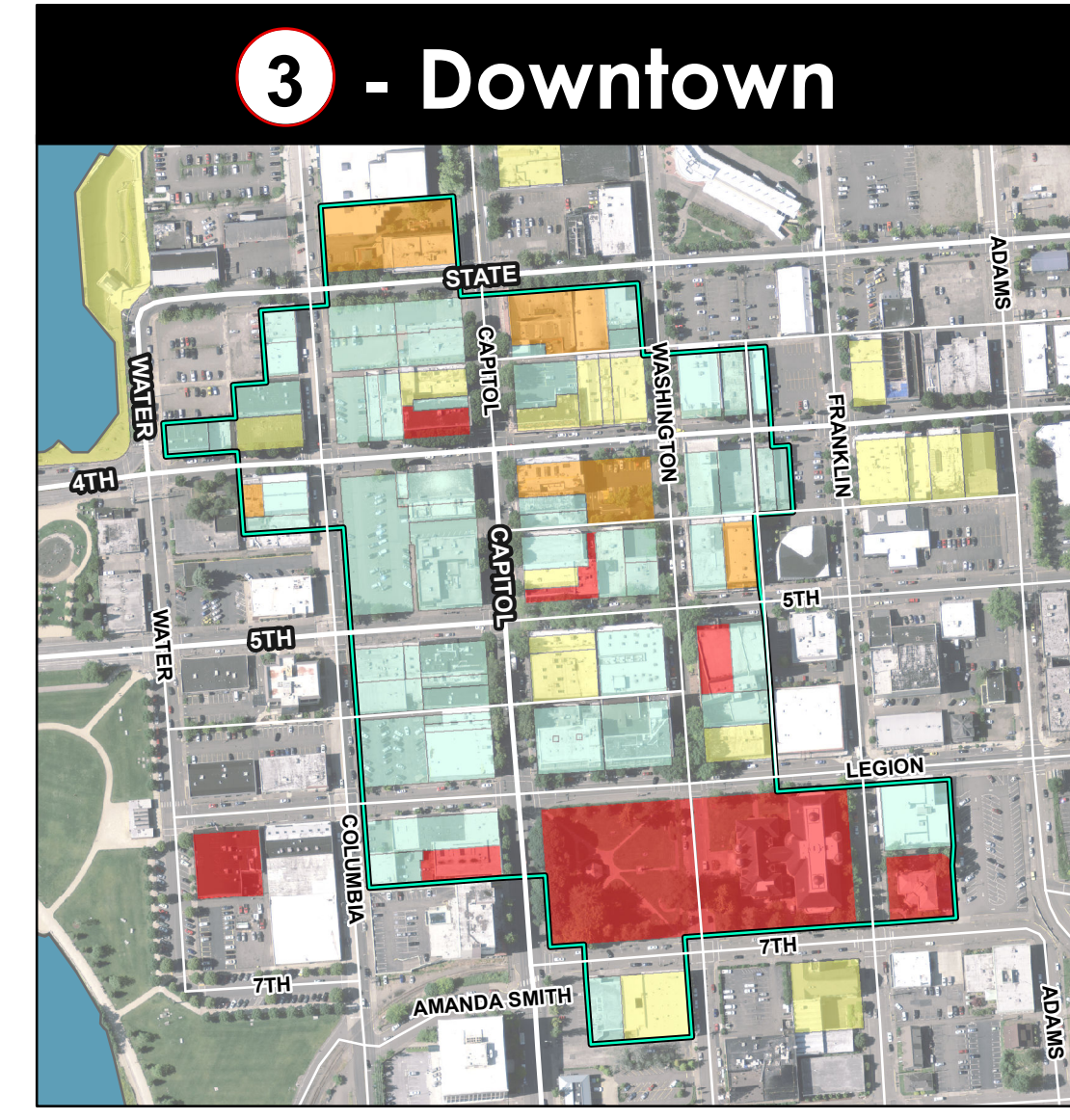
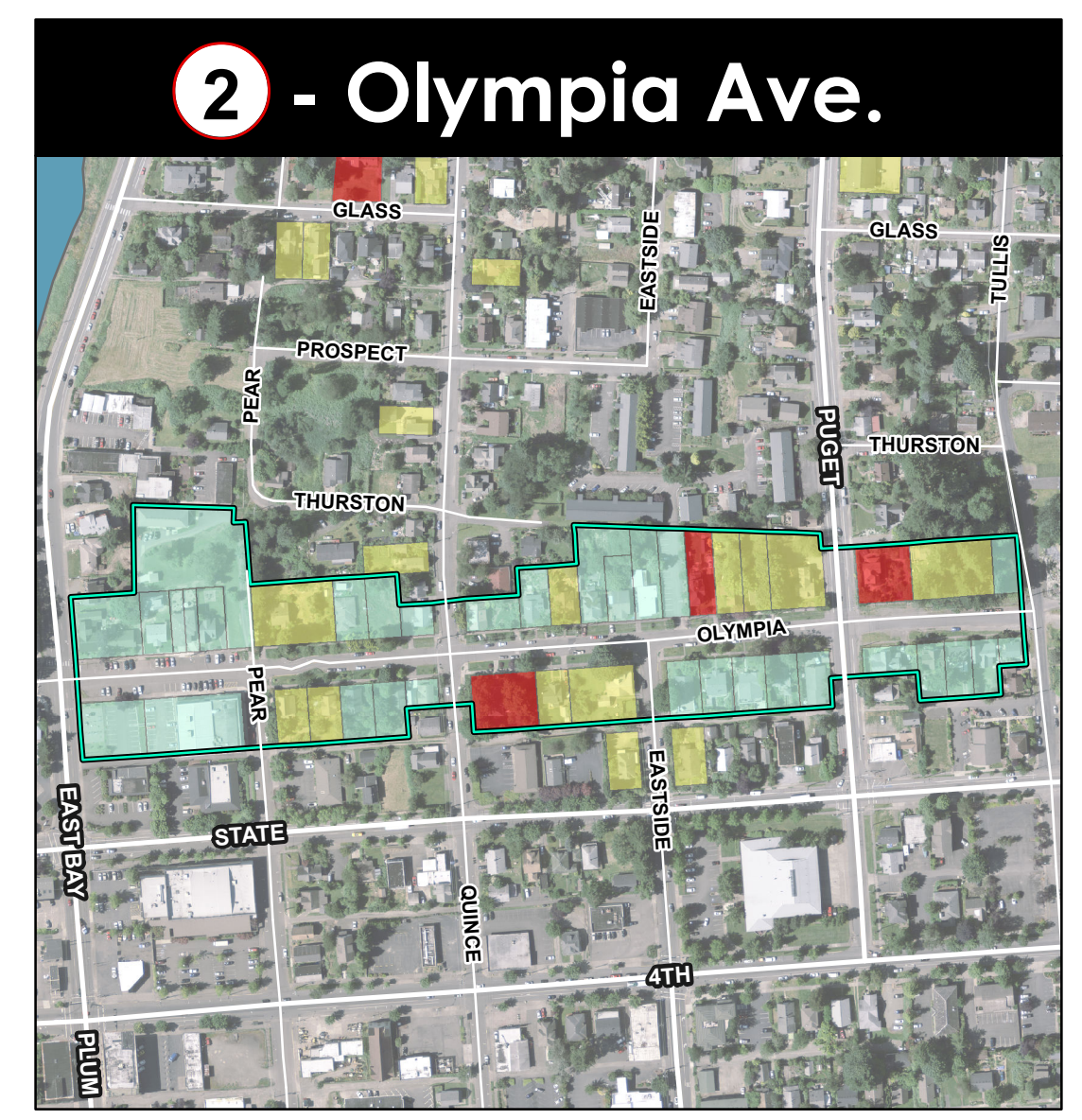
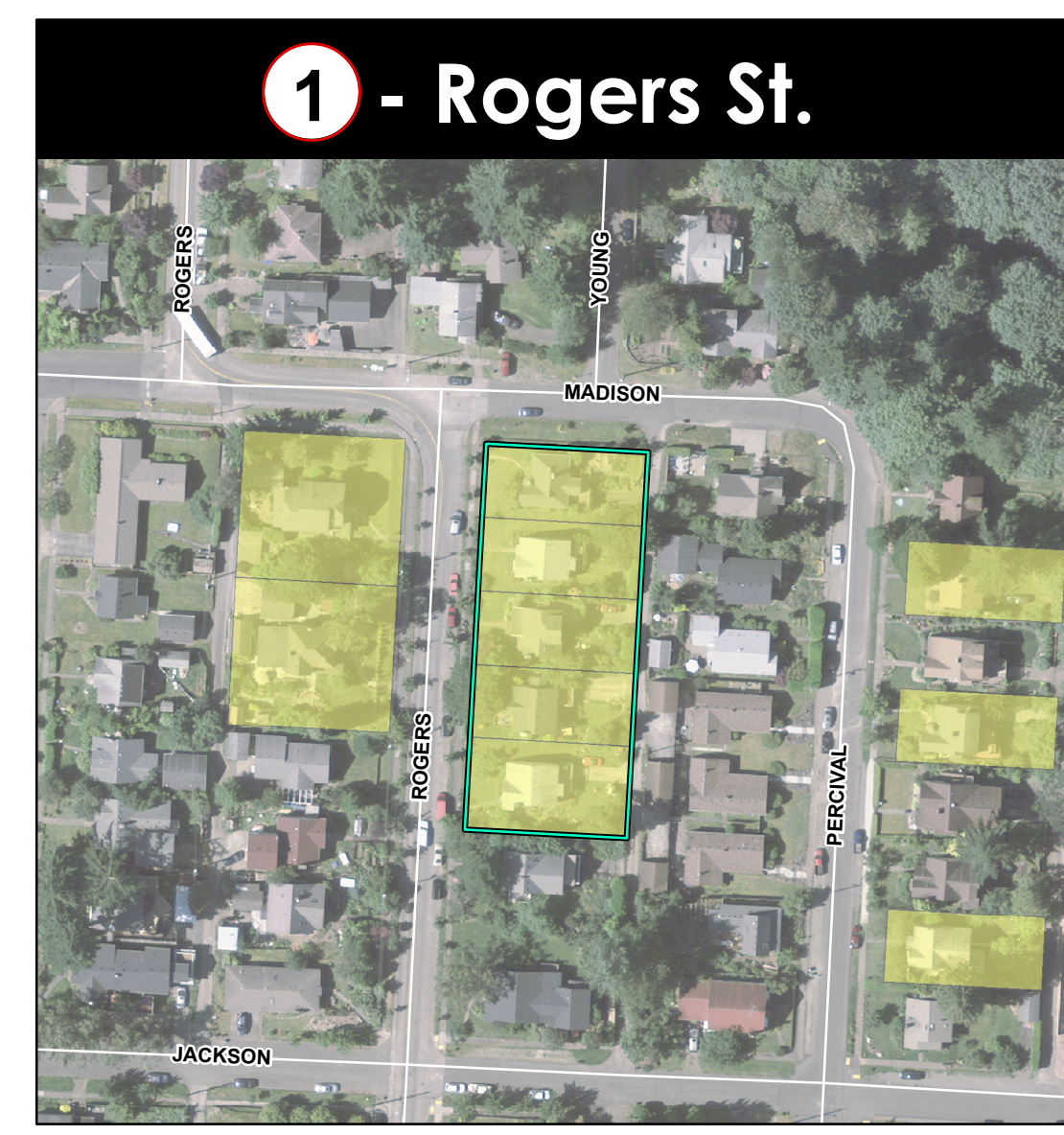
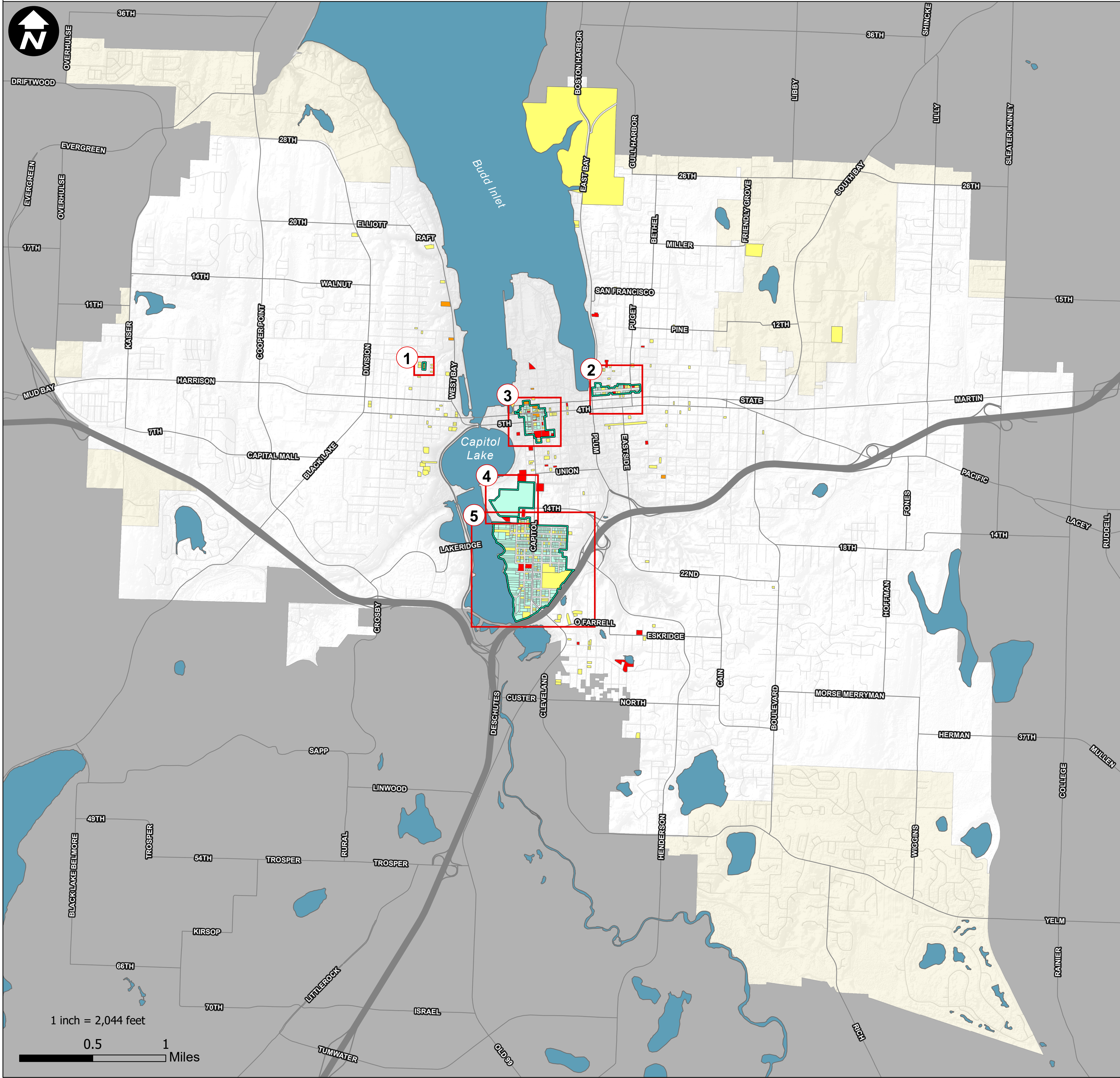
- Centro Integral Educativo Latino de Olympia (CIELO)
- Daughters of the Pioneers, Olympia Chapter
- Hispanic Roundtable of South Sound
- Olympia Area Chinese Association
- Olympia Archaeological Society
- Olympia Harbor Days
- Olympia Genealogical Society
- Olympia Historical Society & Bigelow House Museum
- Olympia-Kato Sister City Association
- Olympia-Tumwater Foundation
- Squaxin Island Museum
- Tribes with a legal interest in Olympia (see above table)
- Washington State Archives
- Washington State Department of Archaeology and Historic Preservation
- Washington State Historical Society





# Designated Historic Properties

Map printed 7/31/2017  
Community Planning & Development



#### Historic Properties

**Individually Listed on Historic Register**  
\*Historic designation is tied to the tax parcel.

- Yellow: Olympia Heritage Register
- Orange: Washington Heritage Register
- Red: National Register of Historic Places

#### Historic District

- Green outline: Historic District Boundaries
- Light green fill: Parcels Designated within Historic District

#### Map Legend

- White: City of Olympia
- Yellow: Urban Growth Area
- Grey: Thurston County

The City of Olympia and its personnel cannot assure the accuracy, completeness, reliability, or suitability of this information for any particular purpose. The parcels, right-of-ways, utilities and structures depicted hereon are based on record information and aerial photos only. It is recommended the recipient and or user field verify all information prior to use. The use of this data for purposes other than those for which they were created may yield inaccurate or misleading results. The recipient may not assert any proprietary rights to this information. The City of Olympia and its personnel neither accept or assume liability or responsibility, whatsoever, for any activity involving this information with respect to lost profits, lost savings or any other consequential damages.