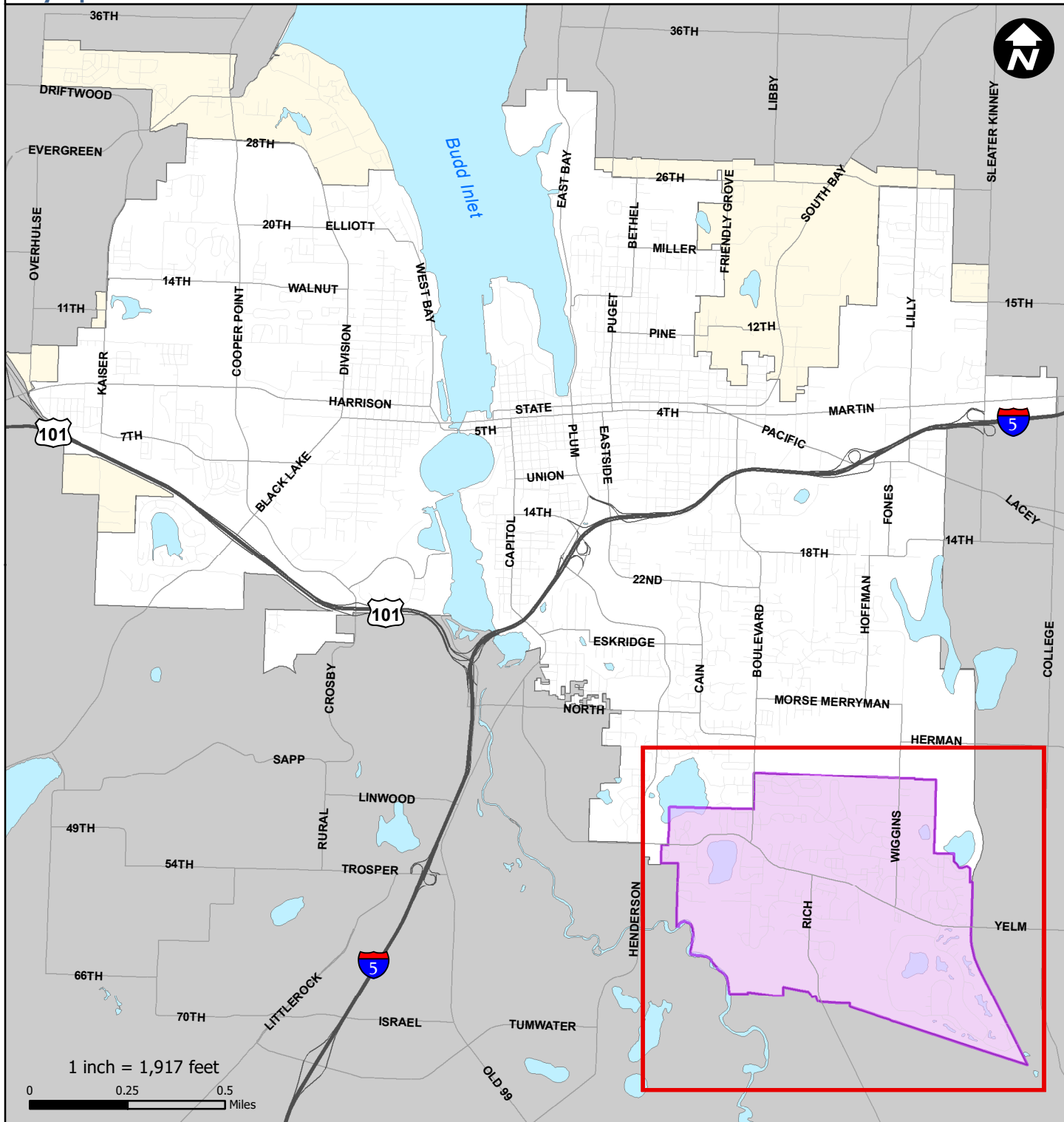




Annexation Study Area



- Annexation Study Area
- City Limits
- UGA
- Thurston County

This map is intended for 8.5x11" portrait printing.

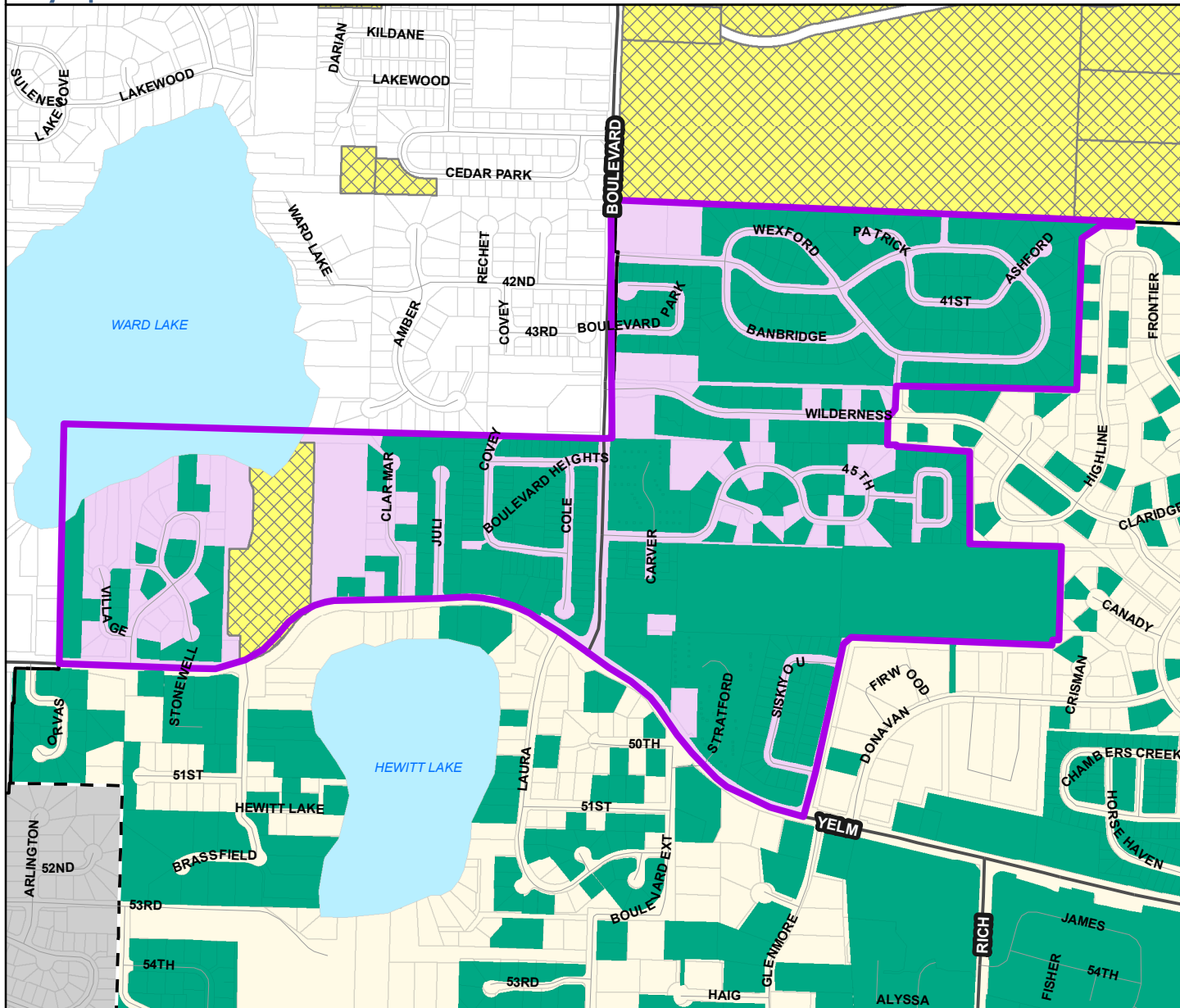
The City of Olympia and its personnel cannot assure the accuracy, completeness, reliability, or suitability of this information for any particular purpose. The parcels, right-of-ways, utilities and structures depicted hereon are based on record information and aerial photos only. It is recommended the recipient and or user field verify all information prior to use. The use of this data for purposes other than those for which they were created may yield inaccurate or misleading results. The recipient may not assert any proprietary rights to this information. The City of Olympia and its personnel neither accept or assume liability or responsibility, whatsoever, for any activity involving this information with respect to lost profits, lost savings or any other consequential damages.



Annexation Study Area

Boulevard Rd

Map printed 12/26/2017



Possible Annexation Area



Boulevard Rd

Total Value of Land with
Annexation Commitments - \$144,451,800

Total Value of All Land - \$163,925,700

Percent of Land Value - 88.1%

Total Housing Units - 547 Units

Estimated Population - 1368 People

Total Acres - 222.9 Acres



City Limits



UGA



Thurston County



Parcels

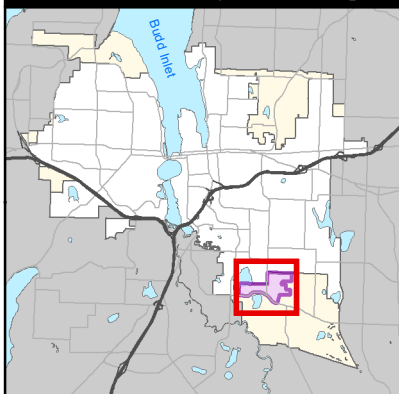


City Owned



Commitments

Vicinity Map



1 inch = 874 feet

0 0.1 0.2
Miles

This map is intended for
8.5x11" portrait printing.

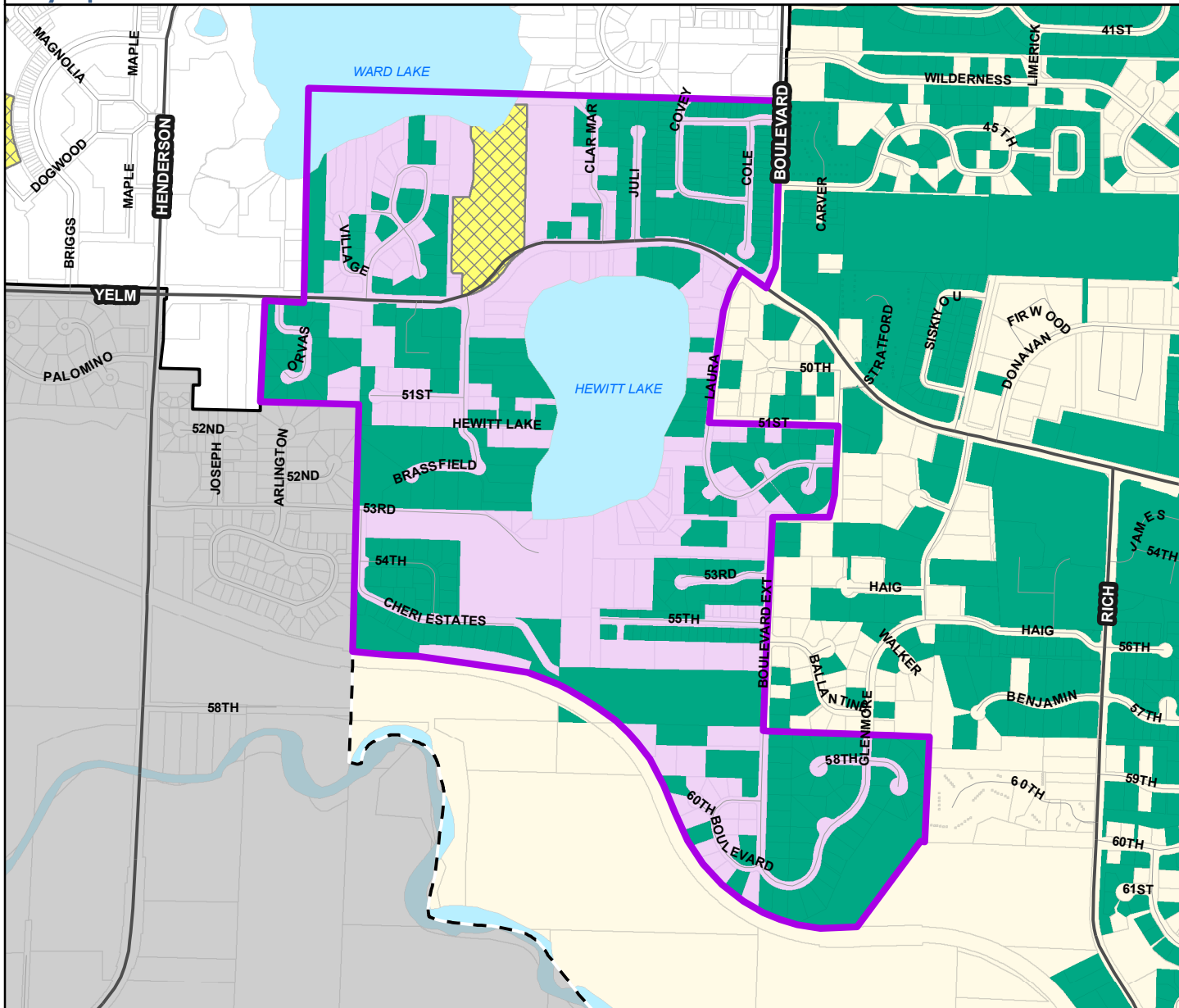
The City of Olympia and its personnel cannot assure the accuracy, completeness, reliability, or suitability of this information for any particular purpose. The parcels, right-of-ways, utilities and structures depicted hereon are based on record information and aerial photos only. It is recommended the recipient and/or user field verify all information prior to use. The use of this data for purposes other than those for which they were created may yield inaccurate or misleading results. The recipient may not assert any proprietary rights to this information. The City of Olympia and its personnel neither accept or assume liability or responsibility, whatsoever, for any activity involving this information with respect to lost profits, lost savings or any other consequential damages.



Annexation Study Area

Hewitt Lake

Map printed 12/26/2017



Possible Annexation Area

 Hewitt Lake

Total Value of Land with
Annexation Commitments - \$103,076,000

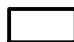

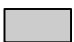



Total Value of All Land - \$150,802,200

Percent of Land Value - 68.4%

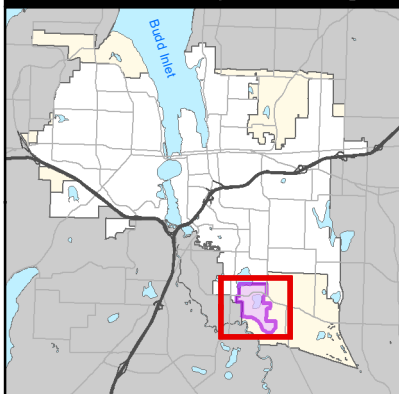
Total Housing Units - 437 Units

Estimated Population - 1,093 People

Total Acres - 287.6 Acres

 City Limits  UGA  Thurston County
 Parcels  City Owned  Commitments

Vicinity Map



1 inch = 1,000 feet

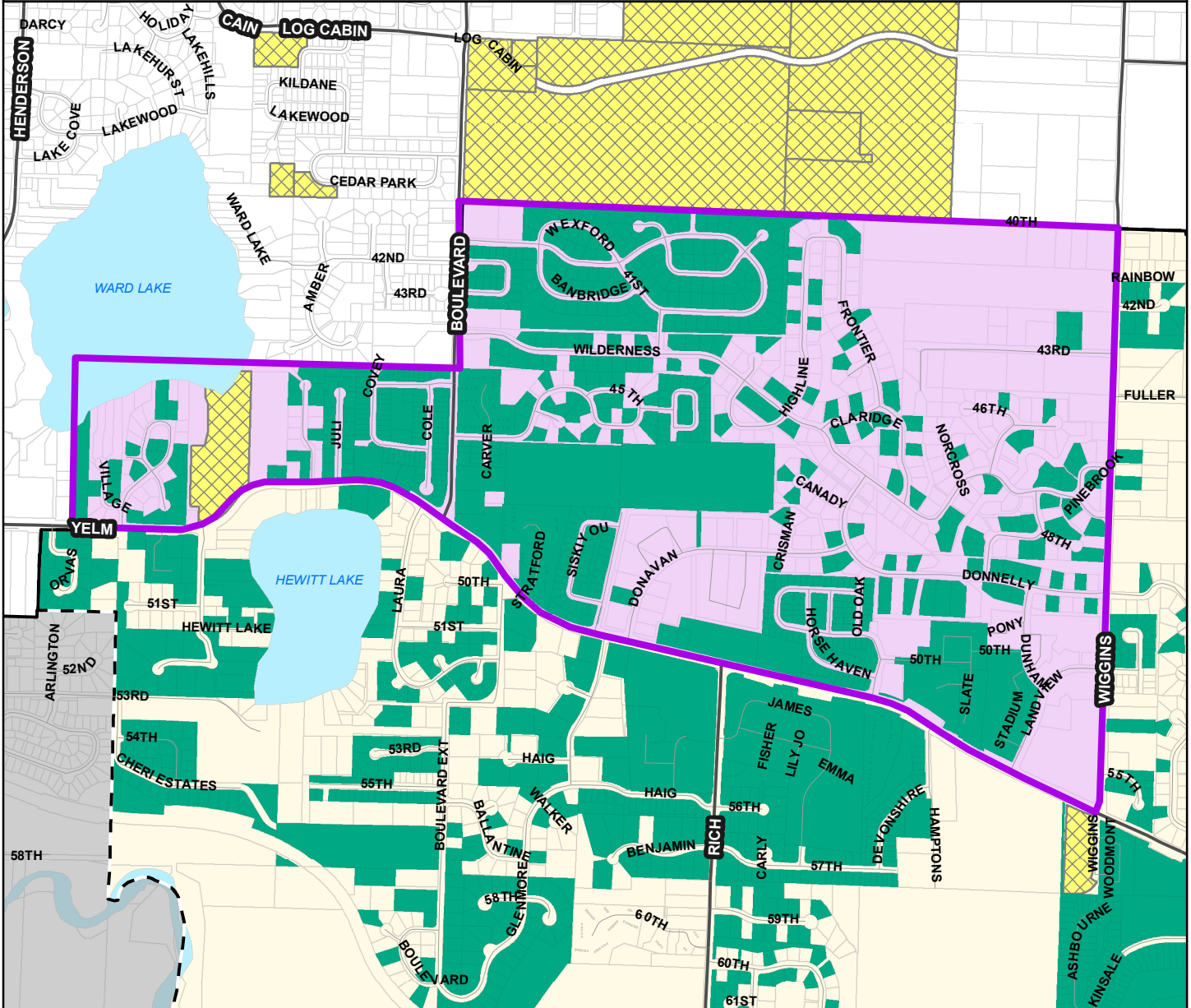
0 0.125 0.25
Miles

This map is intended for
8.5x11" portrait printing.

The City of Olympia and its personnel cannot assure the accuracy, completeness, reliability, or suitability of this information for any particular purpose. The parcels, right-of-ways, utilities and structures depicted hereon are based on record information and aerial photos only. It is recommended the recipient and/or user field verify all information prior to use. The use of this data for purposes other than those for which they were created may yield inaccurate or misleading results. The recipient may not assert any proprietary rights to this information. The City of Olympia and its personnel neither accept or assume liability or responsibility, whatsoever, for any activity involving this information with respect to lost profits, lost savings or any other consequential damages.

Annexation Study Area

Yelm Highway North

Possible Annexation Area

 Yelm Highway North

Total Value of Land with
Annexation Commitments - \$241,824,400

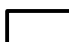





Total Value of All Land - \$342,219,600

Percent of Land Value - 70.7%

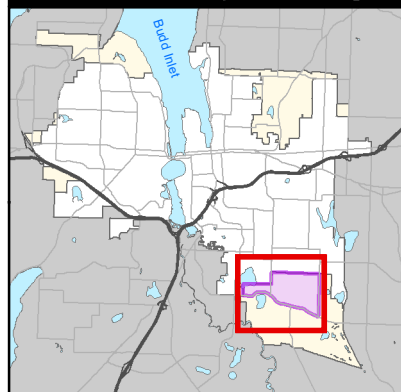
Total Housing Units - 1309 Units

Estimated Population - 3273 People

Total Acres - 517.7 Acres

 City Limits  UGA  Thurston County
 Parcels  City Owned  Commitments

Vicinity Map



1 inch = 1,250 feet

0 0.15 0.3
Miles

This map is intended for
8.5x11" portrait printing.

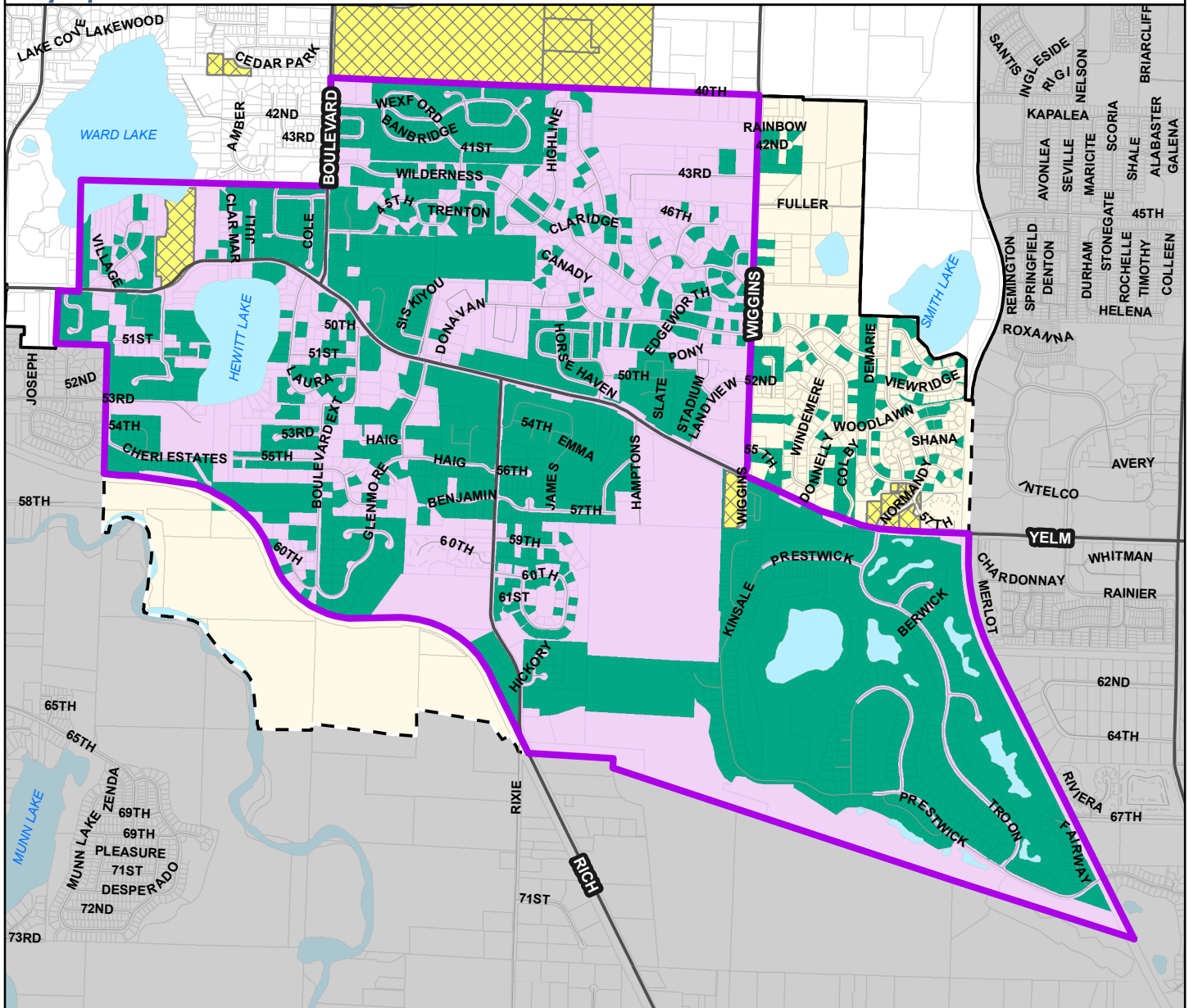
The City of Olympia and its personnel cannot assure the accuracy, completeness, reliability, or suitability of this information for any particular purpose. The parcels, right-of-ways, utilities and structures depicted hereon are based on record information and aerial photos only. It is recommended the recipient and/or user field verify all information prior to use. The use of this data for purposes other than those for which they were created may yield inaccurate or misleading results. The recipient may not assert any proprietary rights to this information. The City of Olympia and its personnel neither accept or assume liability or responsibility, whatsoever, for any activity involving this information with respect to lost profits, lost savings or any other consequential damages.




Annexation Study Area

Yelm Highway North & South

Map printed 12/26/2017



Possible Annexation Area

 Yelm Highway North & South

Total Value of Land with
Annexation Commitments - \$665,248,300

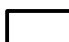





Total Value of All Land - \$838,923,590

Percent of Land Value - 79.3%

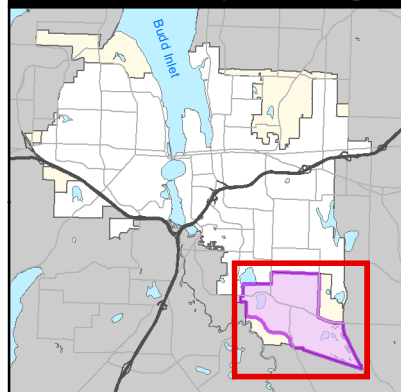
Total Housing Units - 2544 Units

Estimated Population - 6360 People

Total Acres - 1502.4 Acres

 City Limits  UGA  Thurston County
 Parcels  City Owned  Commitments

Vicinity Map



1 inch = 1,917 feet

0 0.25 0.5
Miles

This map is intended for
8.5x11" portrait printing.

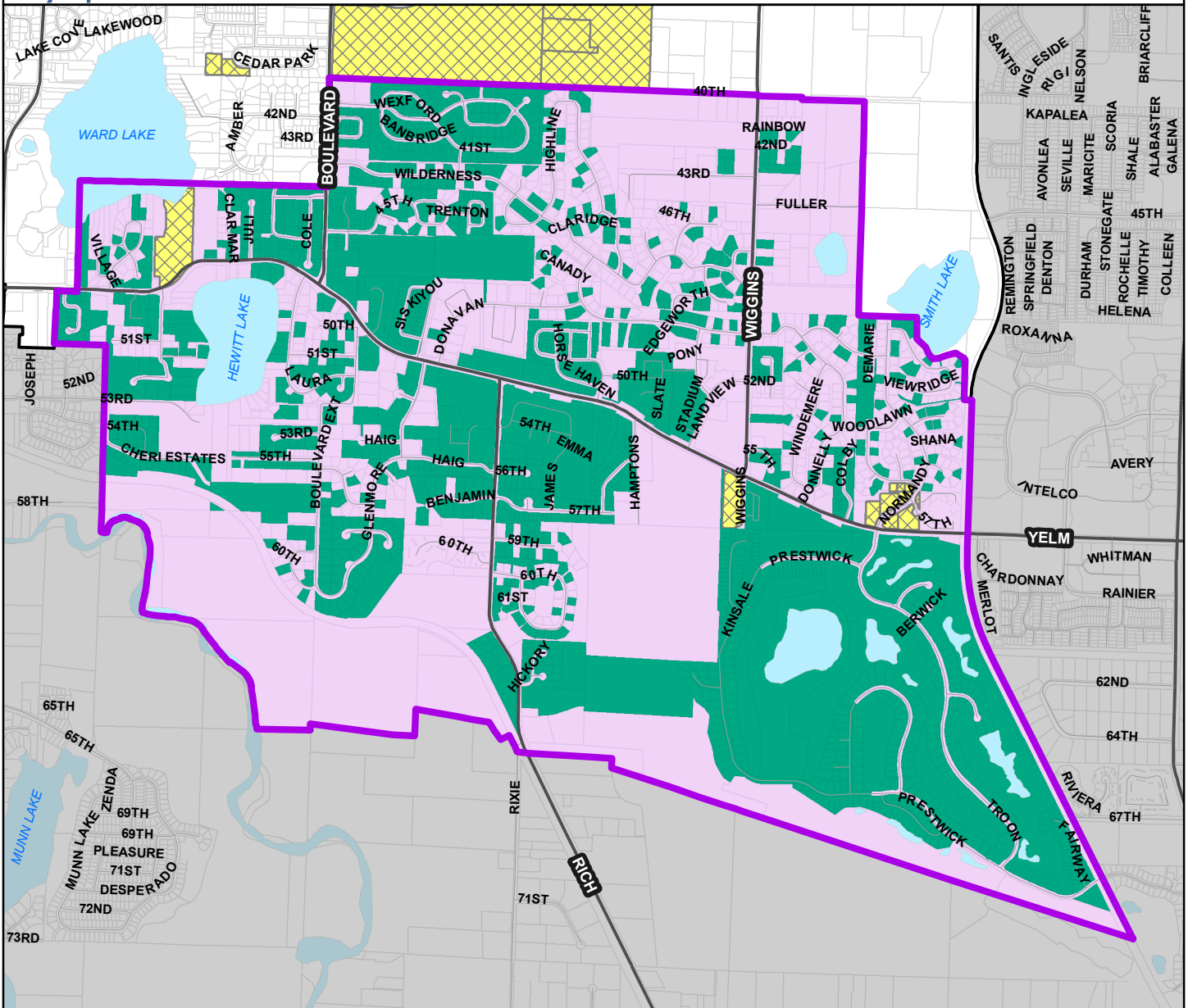
The City of Olympia and its personnel cannot assure the accuracy, completeness, reliability, or suitability of this information for any particular purpose. The parcels, right-of-ways, utilities and structures depicted hereon are based on record information and aerial photos only. It is recommended the recipient and/or user field verify all information prior to use. The use of this data for purposes other than those for which they were created may yield inaccurate or misleading results. The recipient may not assert any proprietary rights to this information. The City of Olympia and its personnel neither accept or assume liability or responsibility, whatsoever, for any activity involving this information with respect to lost profits, lost savings or any other consequential damages.



Annexation Study Area

Southeast

Map printed 12/26/2017



Possible Annexation Area

Southeast

Total Value of Land with
Annexation Commitments - \$695,826,700

Total Value of All Land - \$942,376,440

Percent of Land Value - 73.8%

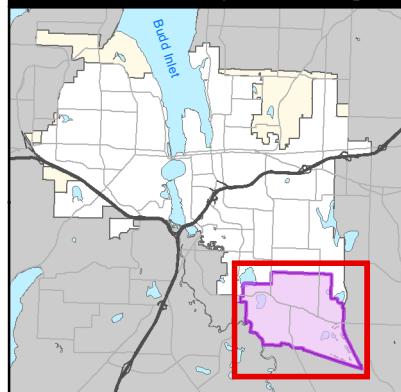
Total Housing Units - 2,973 Units

Estimated Population - 7,433 People

Total Acres - 1,879.7 Acres

City Limits UGA Thurston County
 Parcels City Owned Commitments

Vicinity Map



1 inch = 1,917 feet

0 0.25 0.5
Miles

This map is intended for
8.5x11" portrait printing.

The City of Olympia and its personnel cannot assure the accuracy, completeness, reliability, or suitability of this information for any particular purpose. The parcels, right-of-ways, utilities and structures depicted hereon are based on record information and aerial photos only. It is recommended the recipient and/or user field verify all information prior to use. The use of this data for purposes other than those for which they were created may yield inaccurate or misleading results. The recipient may not assert any proprietary rights to this information. The City of Olympia and its personnel neither accept or assume liability or responsibility, whatsoever, for any activity involving this information with respect to lost profits, lost savings or any other consequential damages.