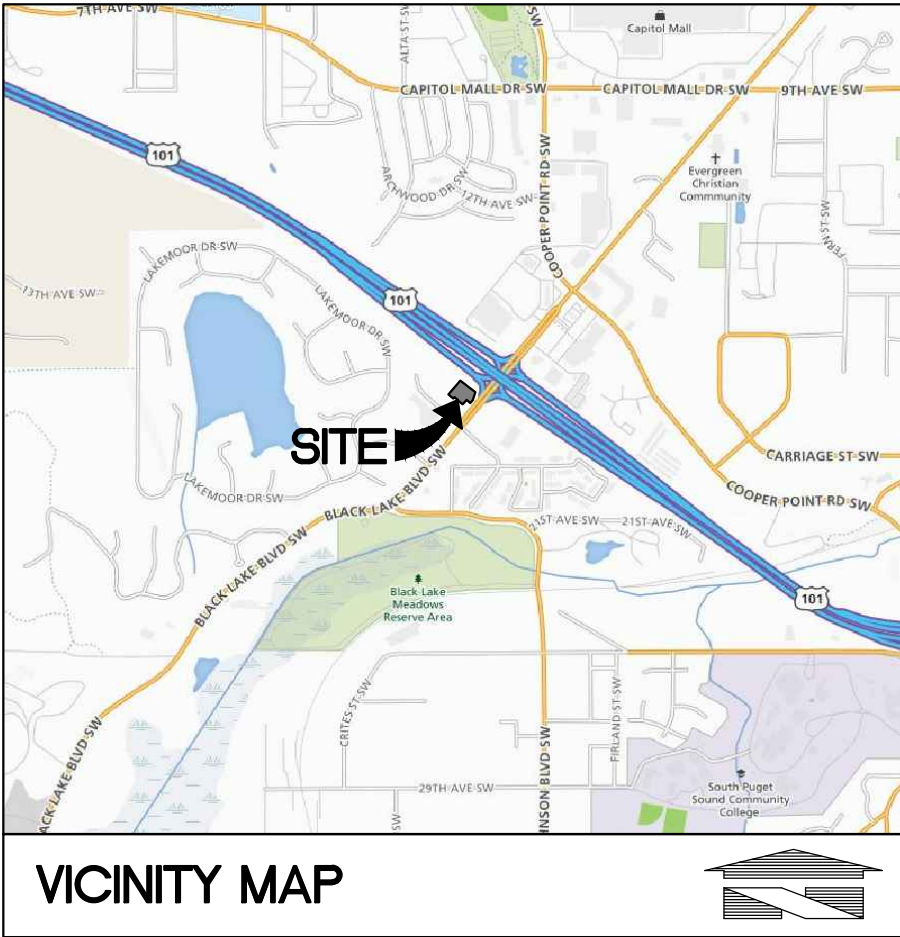
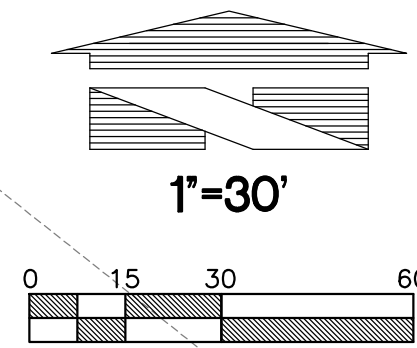
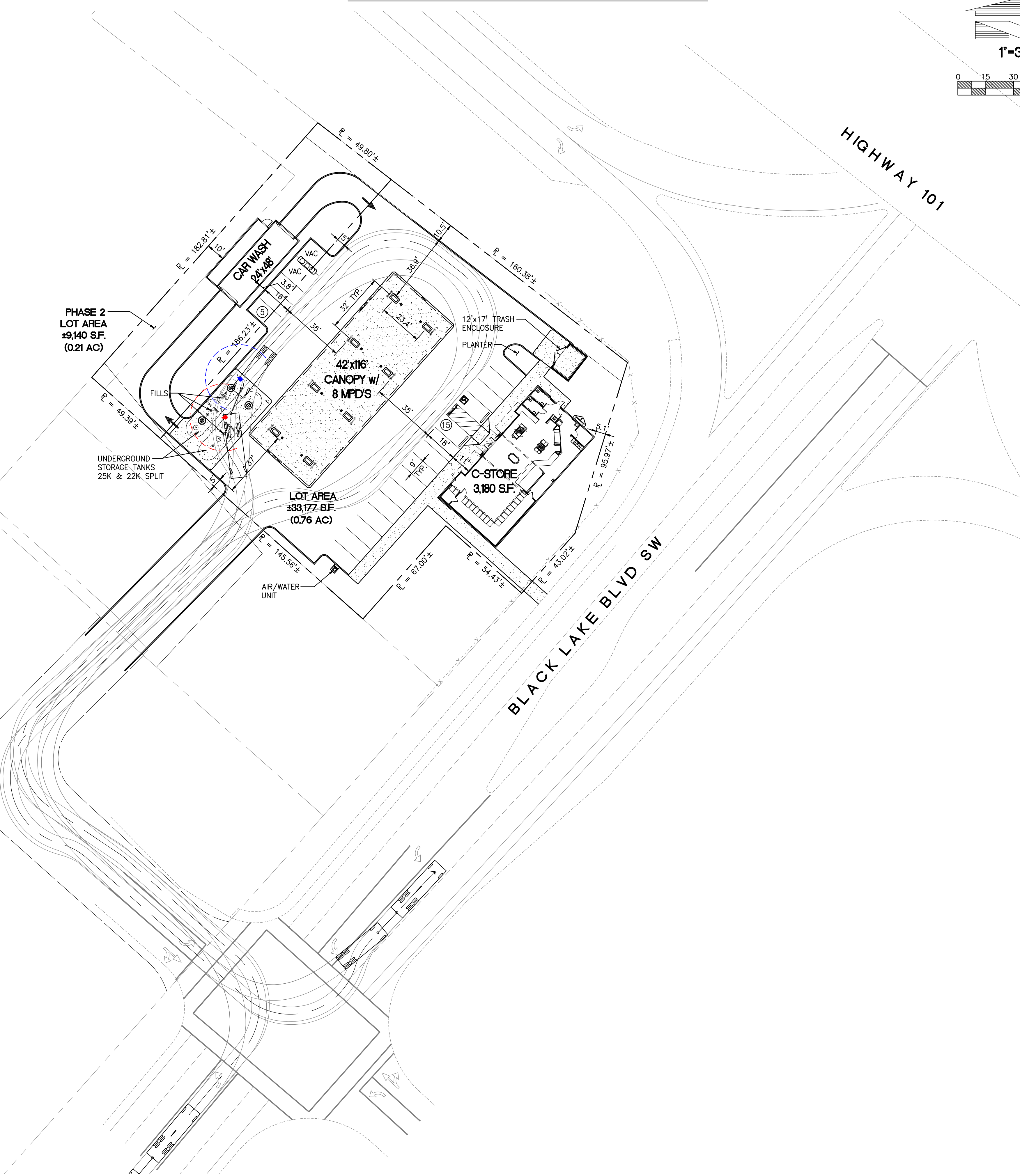


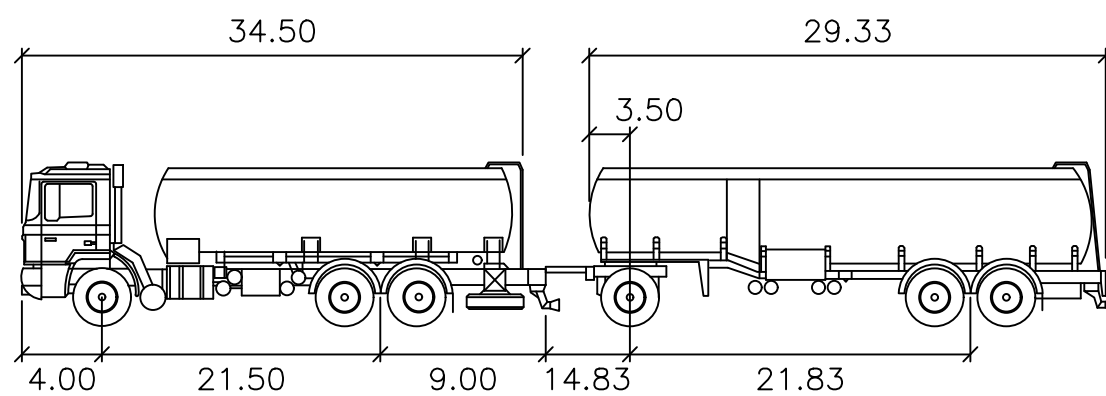
PRELIMINARY SITE PLAN



PROJECT DATA

LOCATION: NWC BLACK LAKE BLVD @ HIGHWAY 101
OLYMPIA, WASHINGTON

LOT AREA: ±33,177 S.F. (0.76 AC)
PHASE 2 LOT AREA: ±9,140 S.F. (0.21 AC)



feet			
First Unit Width	: 8.50	Lock to Lock Time	: 6.0
Trailer Width	: 8.50	Steering Angle	: 36.0
First Unit Track	: 8.50	Articulating Angle	: 70.0
Trailer Track	: 8.50		

Preliminary Not For Construction

No.	Date	By	Old	Appr.	Revision

Job Number	18984
Sheet	SP-1
	of

For:	GUGGENHEIM RETAIL REAL ESTATE PARTNERS, INC. 3000 INTERNET BLVD., SUITE 570 FRISCO, TEXAS 75034
Title:	PRELIMINARY SITE PLAN GUGGENHEIM RETAIL FUEL CENTER NWC BLACK LAKE BLVD AND HIGHWAY 101 OLYMPIA, WASHINGTON

Scale:	Horizontal	Vertical
	—	—

Designed	—
Drawn	—
Checked	—
Approved	—
Date	—

BARGHAUSEN & CONSULTING ENGINEERS INC.
18215 72ND AVENUE SOUTH
KENT, WA 98032
(425)251-6222
(425)251-8782 FAX
CIVIL ENGINEERING, LAND PLANNING,
SURVEYING, ENVIRONMENTAL SERVICES

Date/Time: 1/31/2018 9:20 AM
Scale: 1" = 1'

File: P:\180000\18984\preliminary\18984_SP-1.dwg

DJEDDEL Xref: -----