

NOTE:  
1.5" TALL BLACK LETTERS ON WHITE BACKGROUND.

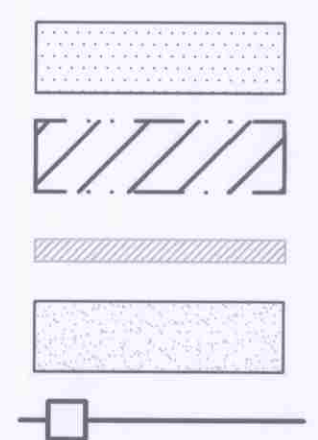
**EXCLUSION FENCE SIGN**

SW<sup>1</sup>/<sub>4</sub>, SEC.22, T.18N., R. 2W., W.M.

### NOTES

- SOLID WASTE COLLECTION SHALL CONSIST OF A GARBAGE AND A RECYCLING CART LOCATED AT THE OFFICE.
- ILLUMINATION TO BE WALL PACKS PLACED ON BUILDING. FULL ILLUMINATION PLAN TO BE PROVIDED AT TIME OF BUILDING PERMIT.
- SEE SHEET C4.0, GRADING PLAN, FOR EXISTING AND PROPOSED CONTOURS.
- STREAM 1 IS REFERENCED IN DOCUMENTS AS STREAM 1.

FOR FULL LEGEND  
SEE SHEET C0.0



PROPOSED PARKING AREA PAVEMENT

PROPOSED POND AREA SEE SHEET C5.0 FOR MORE INFORMATION.

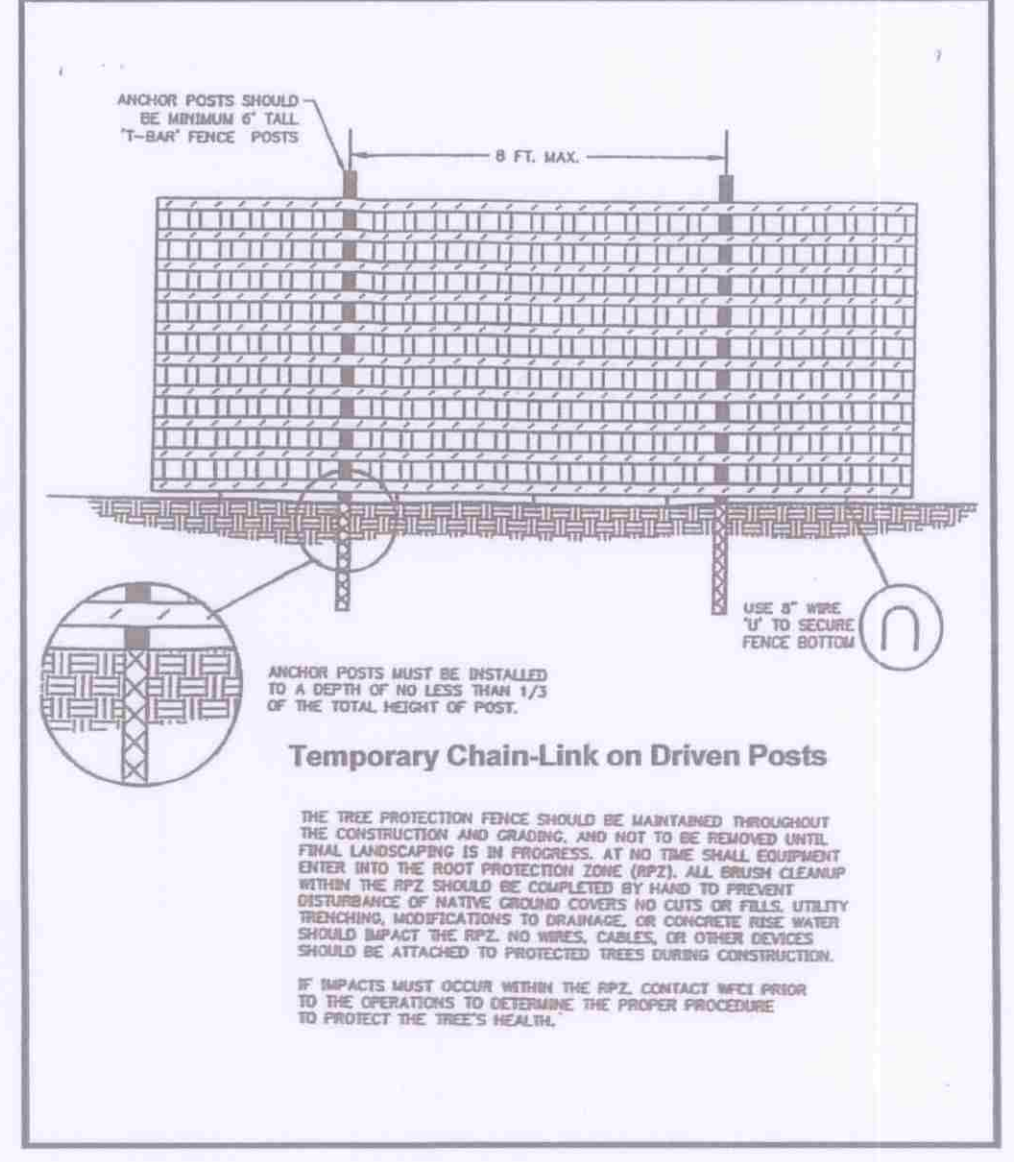
PROPOSED WALL SEE SHEET C4.0 FOR MORE INFORMATION.

EXISTING FILL

TREE PROTECTION FENCE

**UNDERGROUND SERVICE ALERT**  
ONE-CALL NUMBER  
**811**  
CALL TWO BUSINESS DAYS BEFORE YOU DIG

DUMP NO WASTE  
DRAINS TO STREAM



**CITY OF OLYMPIA**  
COMMUNITY PLANNING AND DEVELOPMENT DIRECTOR

**APPROVED**

DIRECTOR Catherine R. M. B. DATE Sep 6, 2016

APPEAL PERIOD EXPIRES Sep 27, 2016

**APPROVAL FOR SITE PLAN ONLY**

ANY SITE REVISION MUST HAVE PRIOR SITE PLAN REVIEW, CONSTRUCTION PLANS REQUIRE SEPARATE REVIEW & APPROVAL.

APPROVAL EXPIRATION DATE Sep 27, 2018

### CONSTRUCTION NOTES

- PROVIDE AND INSTALL 3" ASPHALT OVER 6" CRUSHED GRAVEL PAVEMENT SECTION PER DETAIL 1, SHEET C3.1.
- PROVIDE AND INSTALL CEMENT CONCRETE TRAFFIC CURB PER CITY OF OLYMPIA STANDARD PLAN 4-9 & 4-9A.
- PROVIDE AND INSTALL 5' WIDE CONCRETE SIDEWALK PER CITY OF OLYMPIA STANDARD PLAN 4-9 & 4-9A.
- PROVIDE AND INSTALL TYPE D1 SIDEWALK RAMP PER CITY OF OLYMPIA STANDARD PLAN 4-12D.
- PROVIDE AND INSTALL 2" ASPHALT OVER 6" CRUSHED GRAVEL PAVEMENT SECTION PER DETAIL 1 SHEET C3.1.
- PAINT 90° PARKING STALLS AS SHOWN. STRIPING SHALL BE 4" SWSL DOUBLE PAINTED PER WSDOT SPECIFICATION, 8-22 PAVEMENT MARKING.
- PAINT ACCESSIBLE HANDICAP PARKING STALL WITH INTERNATIONAL SYMBOL OF ACCESS AND HC SIGN AT HEAD OF STALL PER IBC STANDARDS. PROVIDE 5' MIN. ACCESS AISLE WITH STRIPING AS SHOWN. SEE DETAILS 2 AND 3, SHEET C3.1.
- PROVIDE AND INSTALL FLUSH CURB ALONG HANDICAP SPACE. SEE GRADING PLAN FOR ELEVATION COORDINATE WITH ARCHITECT.
- BIOINFILTRATION POND. SEE STORM DRAINAGE PLANS, SHEETS C5.0 THRU C5.4.
- RESERVED.
- PROVIDE AND INSTALL STORAGE FACILITY PER ARCHITECTURAL AND STRUCTURAL PLANS.
- APPROXIMATE LOCATION OF PYLON SIGN BY OTHERS UNDER SEPARATE PERMIT FROM CITY.
- PROVIDE AND INSTALL 6' BLACK VINYL CLAD CHAIN LINK FENCE. PROVIDE SIGNAGE EVERY 100' WITH THE FOLLOWING LANGUAGE "CRITICAL AREA PROTECTED BY LAW. CONTACT CITY OF OLYMPIA COMMUNITY PLANNING AND DEVELOPMENT FOR INFORMATION" ALONG ANY FENCING BORDERING THE EXISTING STREAMS.
- INSTALL BENCH, LIGHTING BOLLARDS, AND WASTE RECEPTACLE PER SHEET L1.0.

### DATUM

CONTROL PT NO.: GP34101-11  
WSDOT BRASS DISK IN CONC SIDEWALK AT SR-101 AND MOTTMAN ROAD. 83' NORTH OF SE CORNER OF BRIDGE, 2.2' WEST OF CONC. BARRIER, 2.8' EAST OF WEST EDGE OF SIDEWALK, EAST SIDE OF INTERCHANGE (NAVD 88 ELEV.=188.93)

NO.	DATE	BY	REVISIONS
1	08/08/16	TEW	Response to Agency comments

SCALE:
HORIZONTAL: 1" = 60'
VERTICAL: N/A

PROJ #:	15-1500
DATE:	08/08/16
DESIGNED BY:	RMA
DRAWN BY:	CEL
REVIEWED:	TRW

<input checked="" type="checkbox"/> CIVIL
<input type="checkbox"/> STRUCTURAL
<input type="checkbox"/> SURVEYING
<input type="checkbox"/> TRAFFIC
<input type="checkbox"/> PLANNING
<input type="checkbox"/> LANDSCAPE
<input type="checkbox"/> OTHER

**WCE**

WHIPPLE CONSULTING ENGINEERS  
2528 NORTH SULLIVAN ROAD  
SPOKANE VALLEY, WA 99216  
PH: 509-893-2617 FAX: 509-926-0227

**SECURE-IT SELF-STORAGE**  
**SITE PLAN**  
**2225 COOPER POINT ROAD SW**  
**OLYMPIA, WA 98502**

**SHEET**  
**C3.0**  
6 OF 35

JOB NUMBER  
**15-1500**

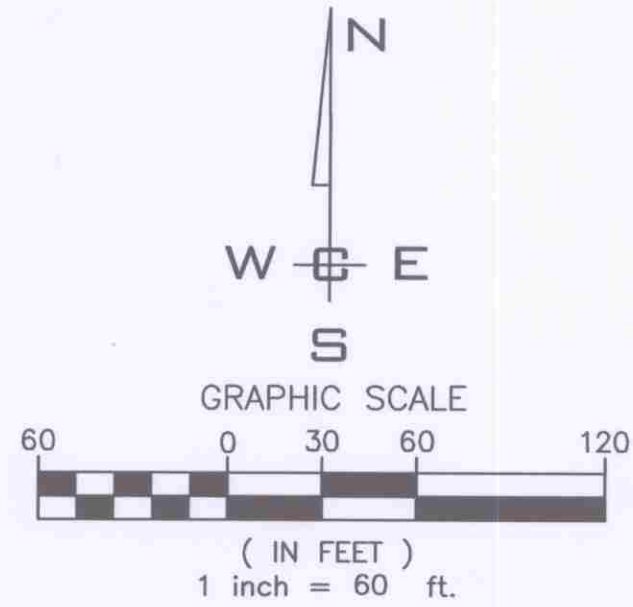
REVISED 8/9/16

APPROVED FOR CONSTRUCTION

BY: \_\_\_\_\_ DATE: \_\_\_\_\_  
DEVELOPMENT REVIEW ENGINEER

APPROVAL EXPIRES: \_\_\_\_\_

**TODD R. WHIPPLE**  
STATE OF WASHINGTON  
REGISTERED PROFESSIONAL ENGINEER  
25462  
8/8/16





SW 1/4, SEC. 22, T. 18 N., R. 2 W., W.M.

## LEGEND

- PROPERTY LINE
- PROPOSED WATER LINE
- PROPOSED FIRE HYDRANT
- PROPOSED WATER METER
- TREE PROTECTION FENCE



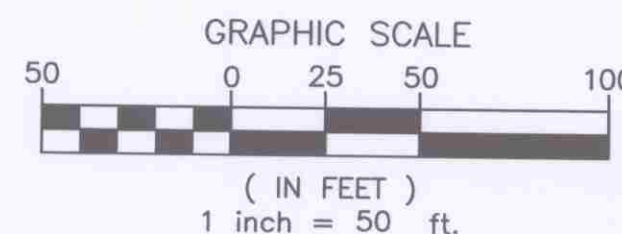
DUMP NO WASTE  
DRAINS TO STREAM

## CONSTRUCTION NOTES

- CONNECT TO EXISTING WATER MAIN PER CITY OF OLYMPIA STANDARDS. CONTRACTOR TO FIELD VERIFY EXACT LOCATION AND INVERT ELEVATION PRIOR TO CONNECTION. PROVIDE NORTHINGS/EASTINGS FOR P.O.C. PROVIDE TEMP. BACKFLOW PREVENTION PER EDDS 6.040.
- INSTALL 8" DUCTILE IRON (DI) FIRE SERVICE LINE WITH TONING WIRE EPOS 6.106 PER OLYMPIA STANDARDS. SEE PROFILE FOR PIPE LENGTHS AND SLOPES.
- INSTALL 6" FIRE HYDRANT ASSEMBLY WITH BOLLARDS PER CITY OF OLYMPIA STANDARDS. SEE PLAN THIS SHEET FOR LENGTH OF 6" PIPE TO FIRE HYDRANT.
- INSTALL 3/4" DOMESTIC WATER SERVICE, AND METER TO OFFICE BUILDING. CONTRACTOR TO COORDINATE WITH ARCHITECTURAL PLANS FOR EXACT CONNECTION LOCATION AND INVERT ELEVATION WITH REDUCED PRESSURE BACKFLOW DEVICE AND HOT BOX PER STANDARD 6-22.
- INSTALL 8" TEE, ALL MJ, (2) 8" RSGV, MJ x MJ ON NORTH AND WEST BRANCHES, WITH 8" X 6" REDUCER ON EAST BRANCH, WITH THRUST BLOCKING PER CITY OF OLYMPIA STANDARDS.
- INSTALL 8" TEE, ALL MJ, WITH 8" X 6" REDUCER ON NORTH BRANCH, WITH THRUST BLOCKING PER CITY OF OLYMPIA STANDARDS.
- INSTALL 8" TEE, ALL MJ, WITH 8" X 6" REDUCER ON NORTH AND WEST BRANCHES, WITH THRUST BLOCKING PER CITY OF OLYMPIA STANDARDS.
- INSTALL 8" 11.25" BEND, MJ x MJ, WITH THRUST BLOCKING PER CITY OF OLYMPIA STANDARDS.
- RESERVED.
- PROVIDE AND INSTALL 3/4" IRRIGATION METER PER CITY OF OLYMPIA STANDARDS. PROVIDE SIZE OF IRRIGATION METER-DOUBLE CHECK PER STANDARD DETAIL 6-21A.
- INSTALL AIR VAC/RELEASE VALVE AT HIGH POINTS PER CITY OF OLYMPIA STANDARDS.
- PROVIDE & INSTALL PIPE SLEEVE PER DETAIL 03 SHEETS C7.1.
- INSTALL 8" 45" BEND, MJ x MJ, WITH THRUST BLOCKING PER CITY OF OLYMPIA STANDARDS.
- EXISTING 8" GATE VALE AND TEMPORARY BLOW OFF ASSEMBLY.

NOTE: ALL WATERMAINS, WITH THE EXCEPTION OF THE SERVICE TO THE OFFICE, ARE FOR FIRE USE ONLY.

\*SEE SHEET CD.1 FOR CITY OF OLYMPIA GENERAL WATER NOTES



APPROVED FOR CONSTRUCTION  
BY: DEVELOPMENT REVIEW ENGINEER DATE: 09/14/16  
APPROVAL EXPIRES:

**SECURE-IT SELF-STORAGE  
WATER PLAN**  
2225 COOPER POINT ROAD SW  
OLYMPIA, WA 98502

**SHEET  
C7.1**

JOB NUMBER  
**15-1500**

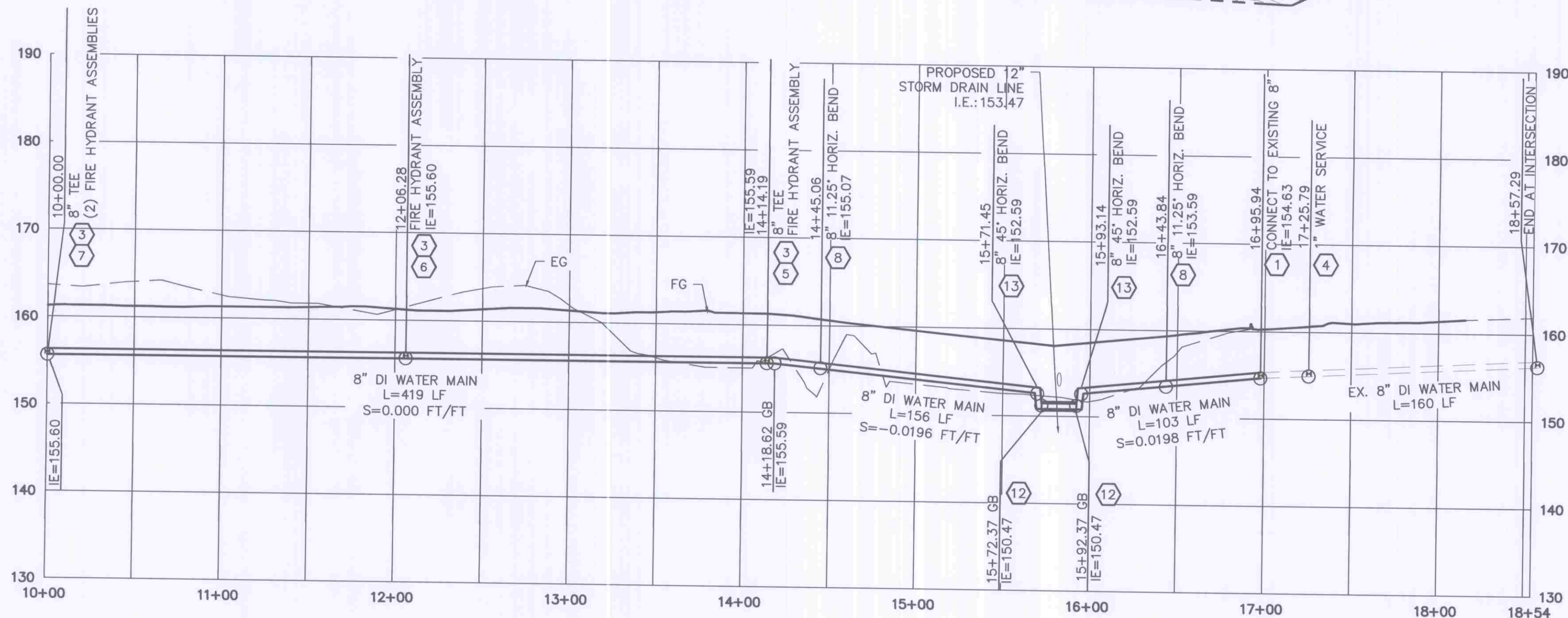
## WATER LINE COORDINATES

NAME	NORTHING	EASTING
1-TEE-FH	626953.88	395286.08
2-TEE-FH	626917.05	395489.08
3-TEE-FH	626879.93	395693.66
4-11.25	626907.33	395698.63

Line Table		
Line #	Length	Direction
L1	285.66	S79° 20' 59"E
L2	71.17	N10° 41' 43"E
L3	206.27	S79° 42' 58"E
L4	11.83	N10° 17' 09"E
L5	207.92	S79° 42' 57"E
L6	43.66	S79° 43' 01"E
L7	27.85	N10° 17' 02"E
L8	198.78	N26° 47' 12"E
L9	52.10	N12° 23' 16"E

## WATER PLAN

SCALE: 1" = 50'



## WATER LINE PROFILE

H SCALE: 1" = 50'  
V SCALE: 1" = 10'

NO.	DATE	BY	REVISIONS
1	08/08/16	TEW	Response to Agency comments

**SCALE:**  
HORIZONTAL:  
1" = 50'  
VERTICAL:  
1" = 10'

PROJ #: 15-1500  
DATE: 08/08/16  
DESIGNED BY: RMA  
DRAWN BY: CEL  
REVIEWED: TRW

CIVIL  
STRUCTURAL  
SURVEYING  
TRAFFIC  
PLANNING  
LANDSCAPE  
OTHER

**WCE**  
WHIPPLE CONSULTING ENGINEERS  
2528 NORTH SULLIVAN ROAD  
SPOKANE VALLEY, WA 99216  
PH: 509-893-2617 FAX: 509-926-0227

DATUM

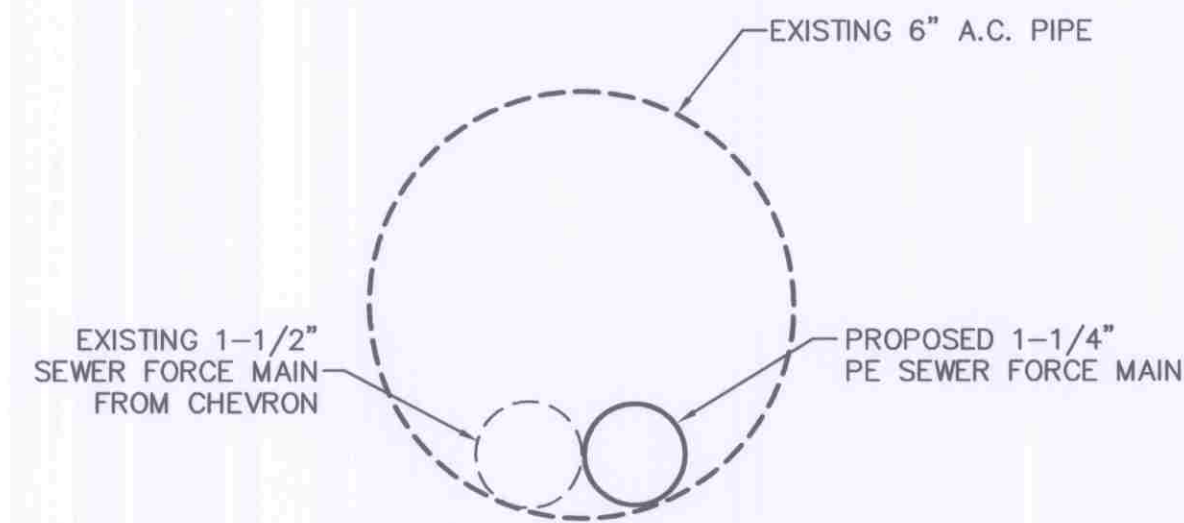
CONTROL PT NO.: GP34101-11  
WSDOT BRASS DISK IN CONC SIDEWALK AT SR-101 AND MOTTMAN ROAD. 83' NORTH OF SE CORNER OF BRIDGE, 2.2' WEST OF CONC. BARRIER, 2.8' EAST OF WEST EDGE OF SIDEWALK, EAST SIDE OF INTERCHANGE (NAVD 88 ELEV.=188.93)



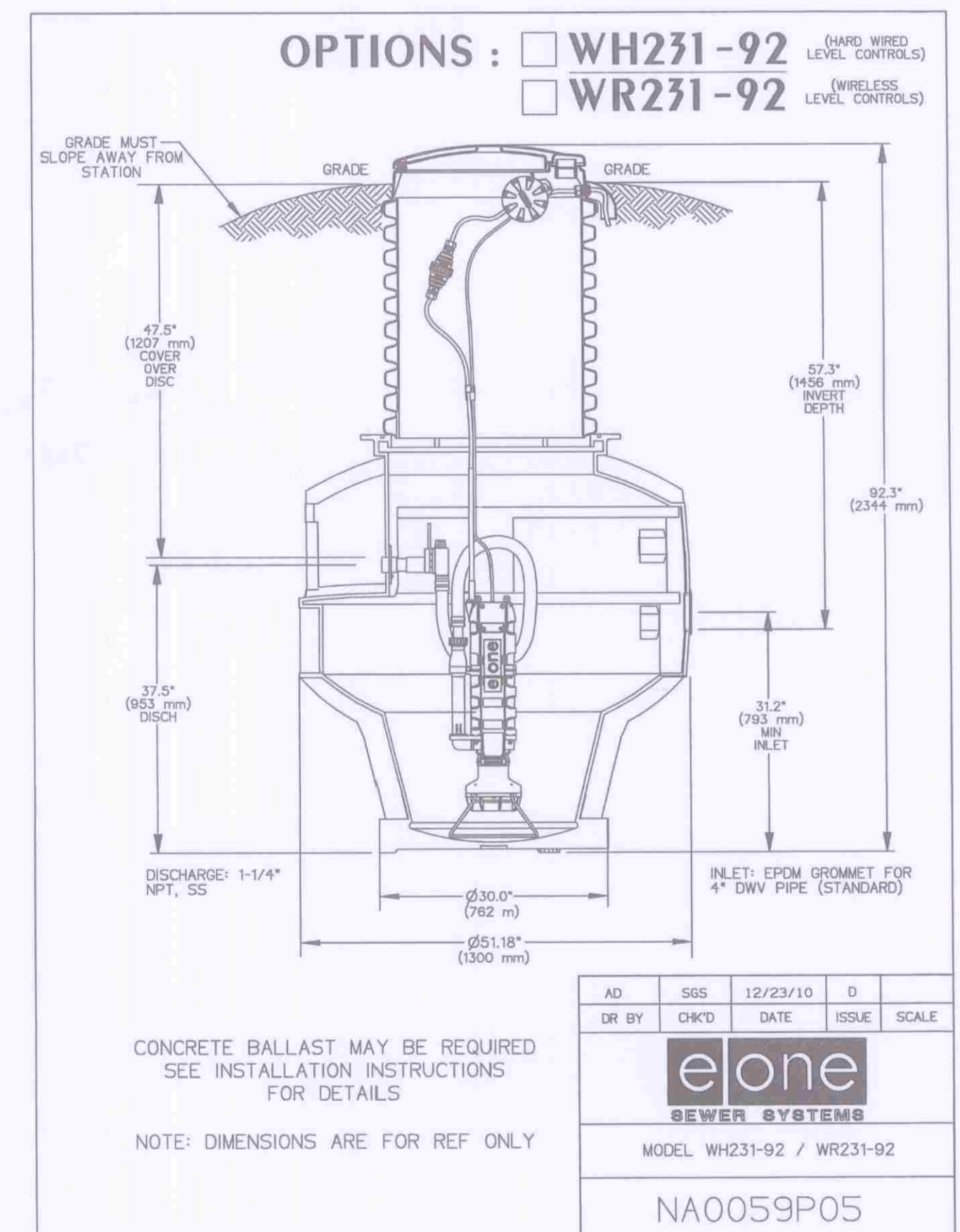


RAINS TO STREAM

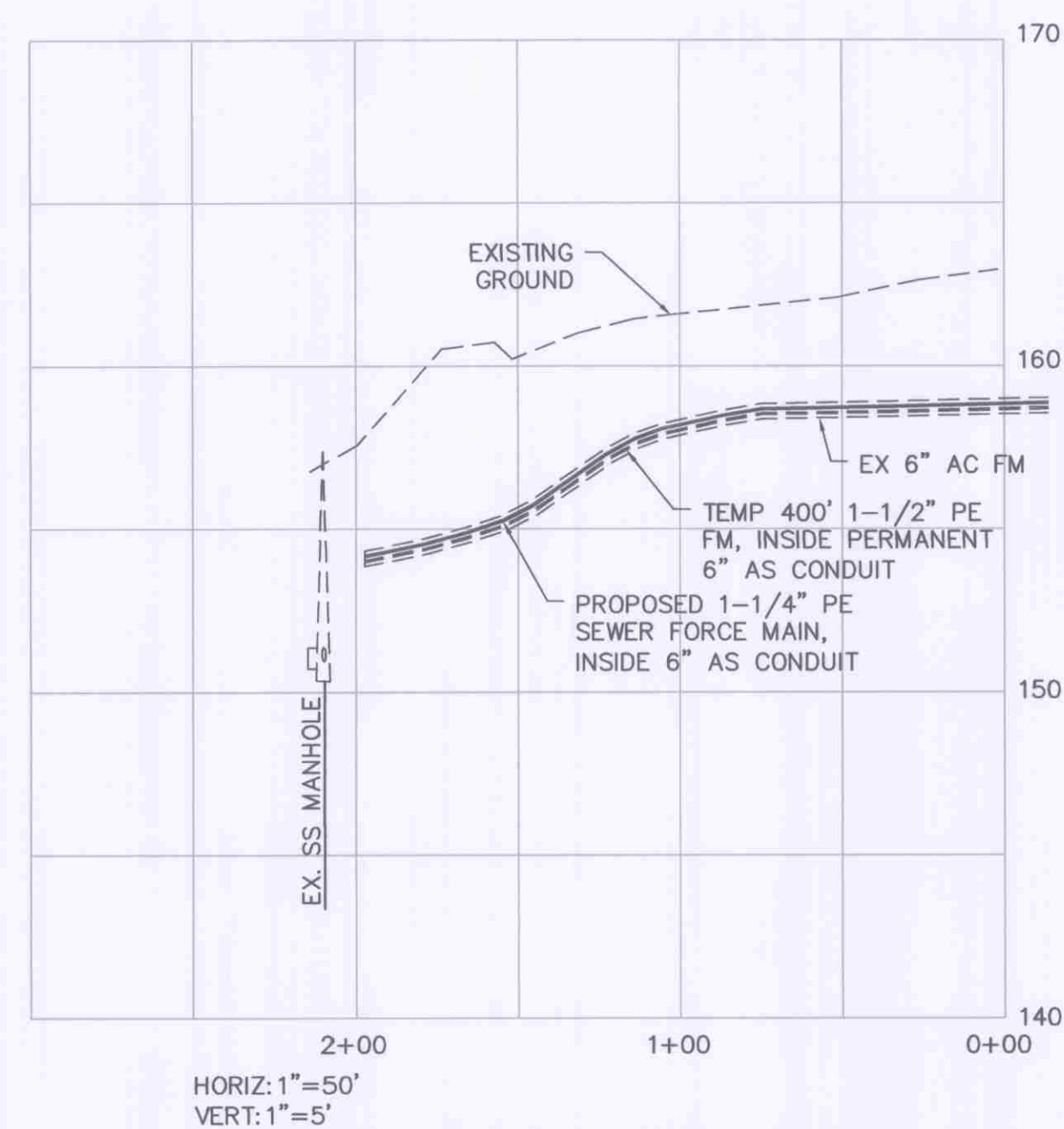
- 1 INSTALL E-QNE WH231-92 GRINDER PUMP STATION PER CITY OF OLYMPIA STANDARDS. SEE DETAIL 1 THIS SHEET FOR MORE INFORMATION.
- 2 CONNECT 4" PVC SDR23 SEWER SERVICE TO OFFICE BUILDING. CONTRACTOR TO COORDINATE WITH ARCHITECTURAL PLANS FOR EXACT CONNECTION LOCATION AND INVERT ELEVATION.
- 3 INSTALL APPROXIMATELY 415' OF 1 1/4" PE SANITARY SEWER FORCE MAIN ALONG EXISTING 1 1/2" PE FORCE MAIN INSIDE THE EXISTING 6" AC FORCE MAIN (FOR FUTURE USE) . CONNECT TO EXISTING DISCHARGE MANHOLE IN EVERGREEN PARK DRIVE SW.



FOR FULL LEGEND  
SEE SHEET CO.0

 TREE PROTECTION FENCE

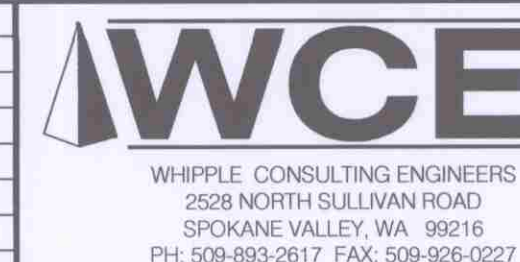
NOT TO SCALE

 DATUM

CONTROL PT NO.: GP34101-11  
WSDOT BRASS DISK IN CONC SIDEWALK AT SR-101 AND  
MOTTMAN ROAD. 83' NORTH OF SE CORNER OF BRIDGE,  
2.2' WEST OF CONC. BARRIER, 2.8' EAST OF WEST EDGE  
OF SIDEWALK, EAST SIDE OF INTERCHANGE  
(NAVD 88 ELEV.=188.93)

[illegible]

<div> <div>SCALE:</div> <div>HORIZONTAL:</div> <div>AS SHOWN</div> <div>VERTICAL:</div> </div>	<div> <div>PROJ #:</div> <div>DATE:</div> <div>DESIGNED BY: SMM</div> <div>DRAWN BY: CEL</div> <div>REVIEWED: TRW</div> </div>	<div> <div> <div>CIVIL</div> <div>STRUCTURAL</div> <div>SURVEYING</div> <div>TRAFFIC</div> <div>PLANNING</div> <div>LANDSCAPE</div> <div>OTHER</div> </div> </div>



**SECURE-IT SELF-STORAGE  
SEWER PLAN  
2225 COOPER POINT ROAD SW  
OLYMPIA, WA 98502**

Professional Engineer Seal for Todd R. Whipple, State of Washington, No. 25462, dated 8/8/16.

**SHEET**  
**C8.1**  
25 OF 35  
**DB NUMBER**  
**5-1500**