

Jeff Fant

From: Chris Merritt <chris@olyeng.com>
Sent: Wednesday, October 10, 2018 4:13 PM
To: Jeff Fant
Cc: Steve Thompson; Paula Smith
Subject: By-Pass Flow Conveyance - Amended Plan
Attachments: Prelim Drainage Plan Amendment.pdf

Follow Up Flag: Follow up
Flag Status: Flagged

RECEIVED FOR REVIEW
CP&D Engineering
11-Oct-18 #18-1315

Page 1 of 2

Jeff,

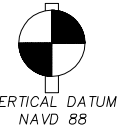
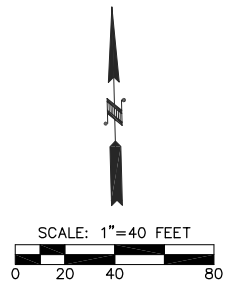
Attached is an amended drainage plan. We increased the storm pipe size to 36" diam. for an additional safety factor and to enable us to shallow up the pipe slope to 2%. At a 2% slope, the 36" pipe can convey up to 100-cfs. Also, we shifted the 36" pipe inlet location easterly to line up with the end of the north-south conveyance ditch and we shifted the outfall location westerly so it's contained entirely within the existing off-site easement.

Design details on the inlet headwall and outfall protection will be provided in the future construction plans.

Please let me know if you have any questions or comments.

Thanks,

Chris



CITY OF OLYMPIA BM NO. 1534: BRASS DISC TOP OF CURB WEST SIDE OF DECATUR STREET ON EXTENSION OF 15TH AVENUE CENTERLINE. ELEVATION = 206.335' NAVD 88

BASIS OF BEARINGS: N 65°47'00" E FROM THE FOUND MONUMENT AT THE WEST ONE-QUARTER CORNER TO THE FOUND MONUMENT AT THE INTERSECTION OF DIVISION AND 16TH. MEAS=666.78 CITY=666.84

TREE RETENTION AND TREE PLANTING (BMP T5.16) & PRESERVING NATIVE VEGETATION (BMP T5.40)

INDIVIDUAL LOT DRAINAGE NOTE

INDIVIDUAL LOT STORMWATER BMP'S ADDRESSING RUNOFF FROM HARD SURFACES (ROOF, DRIVEWAY) AND YARD AREAS WILL BE SPECIFIED ON THE FINAL PLAT MAP OR IN THE INDIVIDUAL BUILDING PERMIT APPLICATIONS FOR EACH LOT. ROOF RUNOFF FROM LOTS 38-56 WILL BE TIGHTLINED TO THE INFILTRATION FACILITY LOCATED ON TRACT E.

GENERAL NOTES

1. THE PROPOSED STORM DRAINAGE SYSTEM INCLUDING CONVEYANCE, TREATMENT, AND INFILTRATION SYSTEMS WILL MEET CITY OF OLYMPIA STANDARDS.
2. THE PROPOSED STORM PIPE AND CATCH BASIN RIM AND INVERT ELEVATIONS SHOWN ARE APPROXIMATE AND WILL BE ADJUSTED DURING THE FINAL DESIGN PHASE OF THE PROJECT.

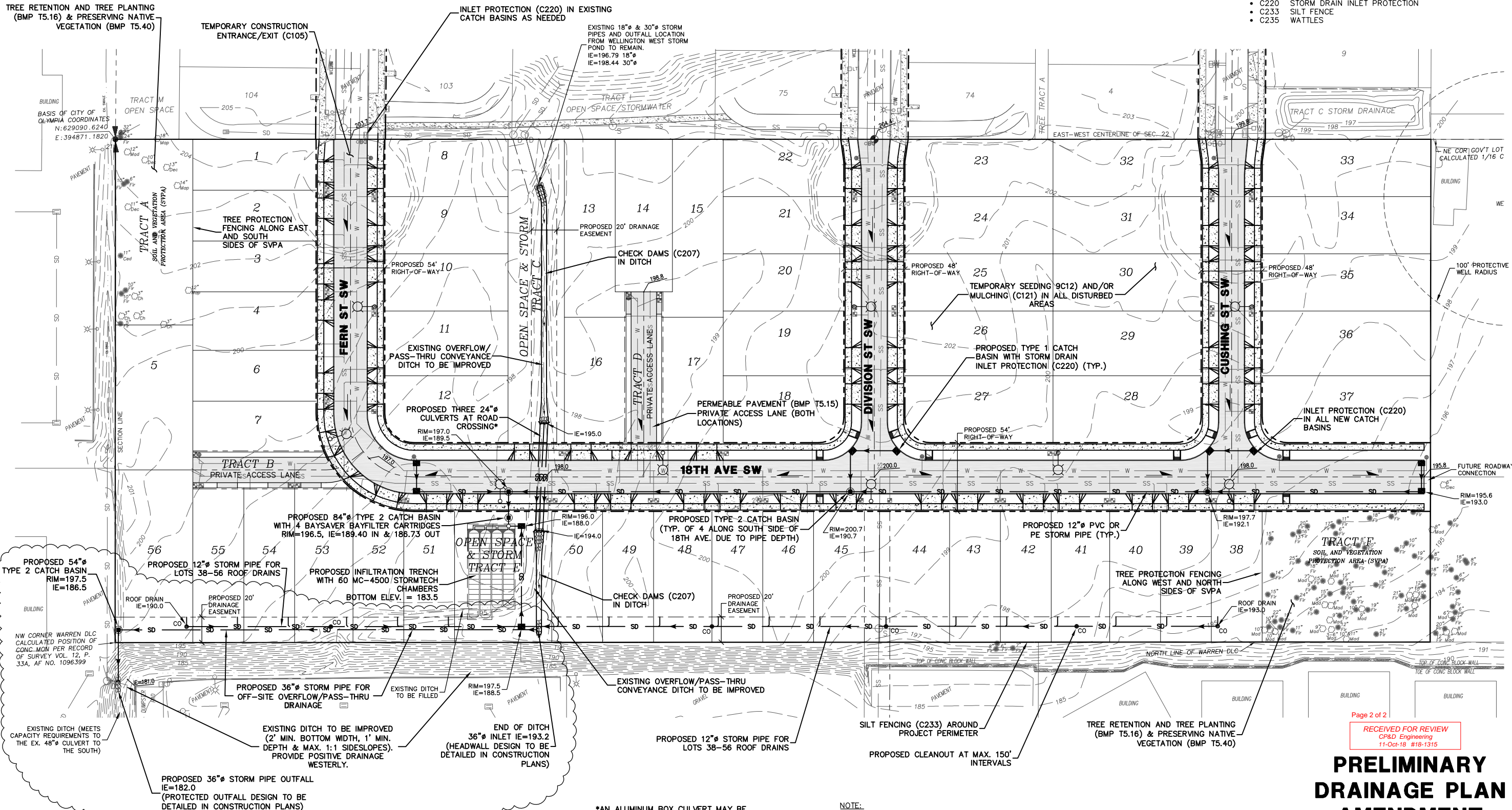
PROPOSED BEST MANAGEMENT PRACTICES (BMP'S)

THE FOLLOWING PERMANENT STORMWATER BEST MANAGEMENT PRACTICES (BMP'S) ARE PROPOSED FOR THIS PROJECT:

- T5.10A DOWNSPOUT INFILTRATION SYSTEMS (LOT ROOFS)
- T5.12 SHEET FLOW DISPERSION (LOT WALKWAYS/PATIOS)
- T5.13 POST-CONSTRUCTION SOIL QUALITY AND DEPTH (ALL DISTURBED, NEW LAWN/LANDSCAPE, AND STORMWATER DISPERSION AREAS)
- T5.14A RAIN GARDENS (LOT ROOFS)
- T5.15 PERMEABLE PAVEMENTS (PRIVATE ACCESS LANES, SIDEWALKS, AND INDIVIDUAL LOT DRIVEWAYS)
- T5.16 TREE RETENTION AND TREE PLANTING (SVPA TRACTS)
- T5.40 PRESERVING NATIVE VEGETATION (SVPA TRACTS)

THE FOLLOWING TEMPORARY CONSTRUCTION BEST MANAGEMENT PRACTICES (BMP'S) ARE PROPOSED FOR THIS PROJECT:

- C101 PRESERVING NATURAL VEGETATION
- C105 STABILIZED CONSTRUCTION ENTRANCE/EXIT
- C120 TEMPORARY AND PERMANENT SEEDING
- C121 MULCHING
- C123 PLASTIC COVERING
- C125 TOPSOILING/COMPOSTING
- C130 SURFACE ROUGHENING
- C140 DUST CONTROL
- C150 MATERIALS ON HAND
- C151 CONCRETE HANDLING
- C152 SAWCUTTING AND SURFACING POLLUTION PREVENTION
- C160 CONTRACTOR EROSION AND SPILL CONTROL LEAD
- C162 SCHEDULING
- C207 CHECK DAMS
- C209 OUTLET PROTECTION
- C229 STORM DRAIN INLET PROTECTION
- C233 SILT FENCE
- C235 WATTLES



*AN ALUMINUM BOX CULVERT MAY BE PROPOSED AT THE FINAL DESIGN STAGE IN LIEU OF THE THREE 24" CULVERTS.

NOTE: SEE DETAILS ON SHEETS 4 & 5 FOR REFERENCE

REVISION	NO.	DATE	DESCRIPTION

DESIGNED BY: CMM
 DRAWN BY: CMM
 CHECKED BY: CMM
 SCALE: 1" = 40'
 DATE: 3/29/18

10/10/18

PO Box 12690
 Olympia, WA 98508
 360.705.2474
 www.olympiceng.com

OLYMPIC ENGINEERING
 Civil, Mechanical, Land Use Planning, & District Measurement

JOB NUMBER: 17096
 DRAWING NAME: 17096_DRPLA
 SHEET: 1 OF 1

Page 2 of 2
PRELIMINARY DRAINAGE PLAN AMENDMENT
 RECEIVED FOR REVIEW
 CP&D Engineering
 11-Oct-18 #18-1315