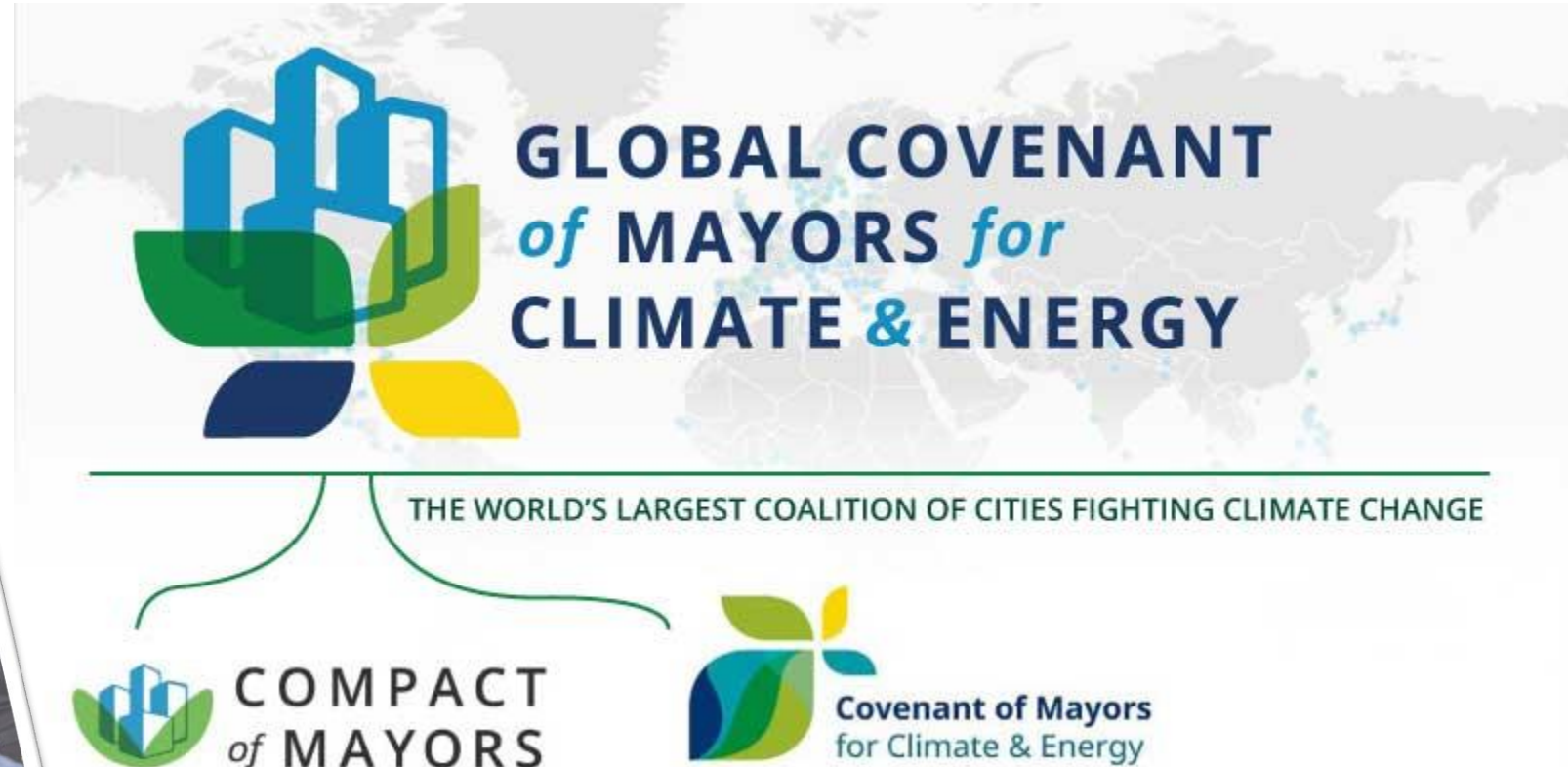


REGIONAL CLIMATE MITIGATION PLAN & ENERGY UPDATE

Utility Advisory Committee
November 1, 2018



Climate Policy



Regional Climate Planning



- ▶ Interlocal Agreement April, 2018 – Phase 1
- ▶ Olympia, Lacey, Tumwater & Thurston County
- ▶ TRPC Lead for Regional Climate Mitigation Plan

Reduction Targets



Action Plan

Community Indicator:

Comp Plan Targets:

25% below 1990 levels by 2020

45% below 1990 levels by 2035

80% below 1990 levels by 2050

BASELINE	MOST RECENT	GOAL	TARGET	STATUS
Greenhouse Gas Emissions (Metric Tons)				
541,498 (1990)	579,000 (2014)	Decrease	108,300 metric tons	
More information...				

Reduction Targets

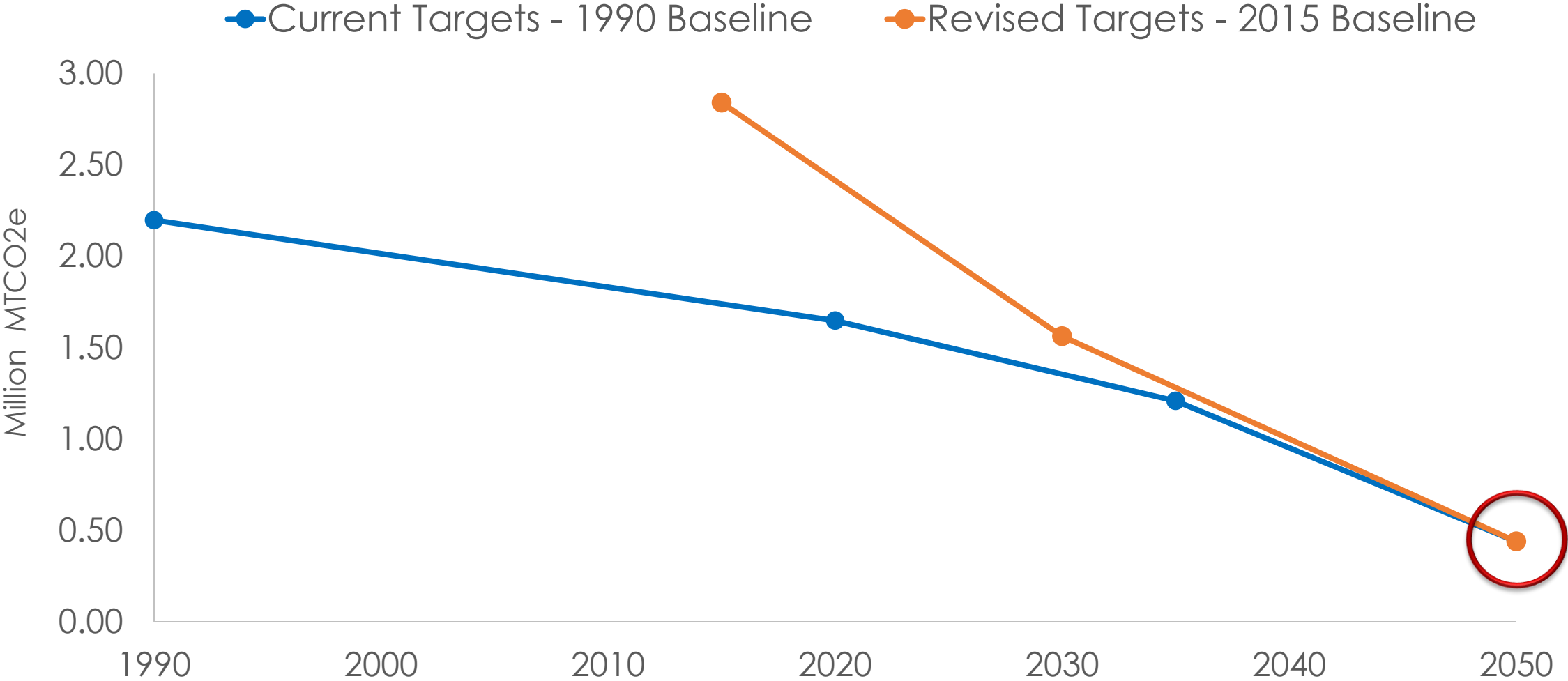


Revised Regional Targets:

45% below 2015 levels by 2030

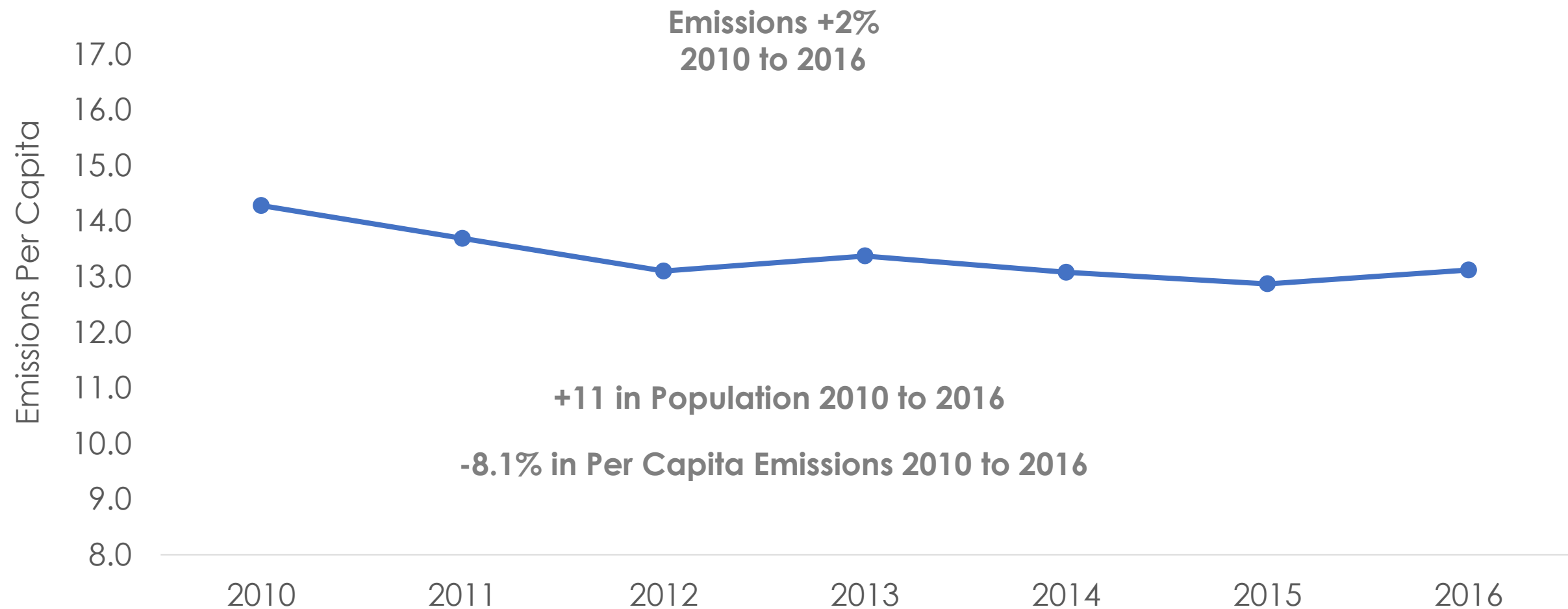
85% below 2015 levels by 2050

Comparing Targets

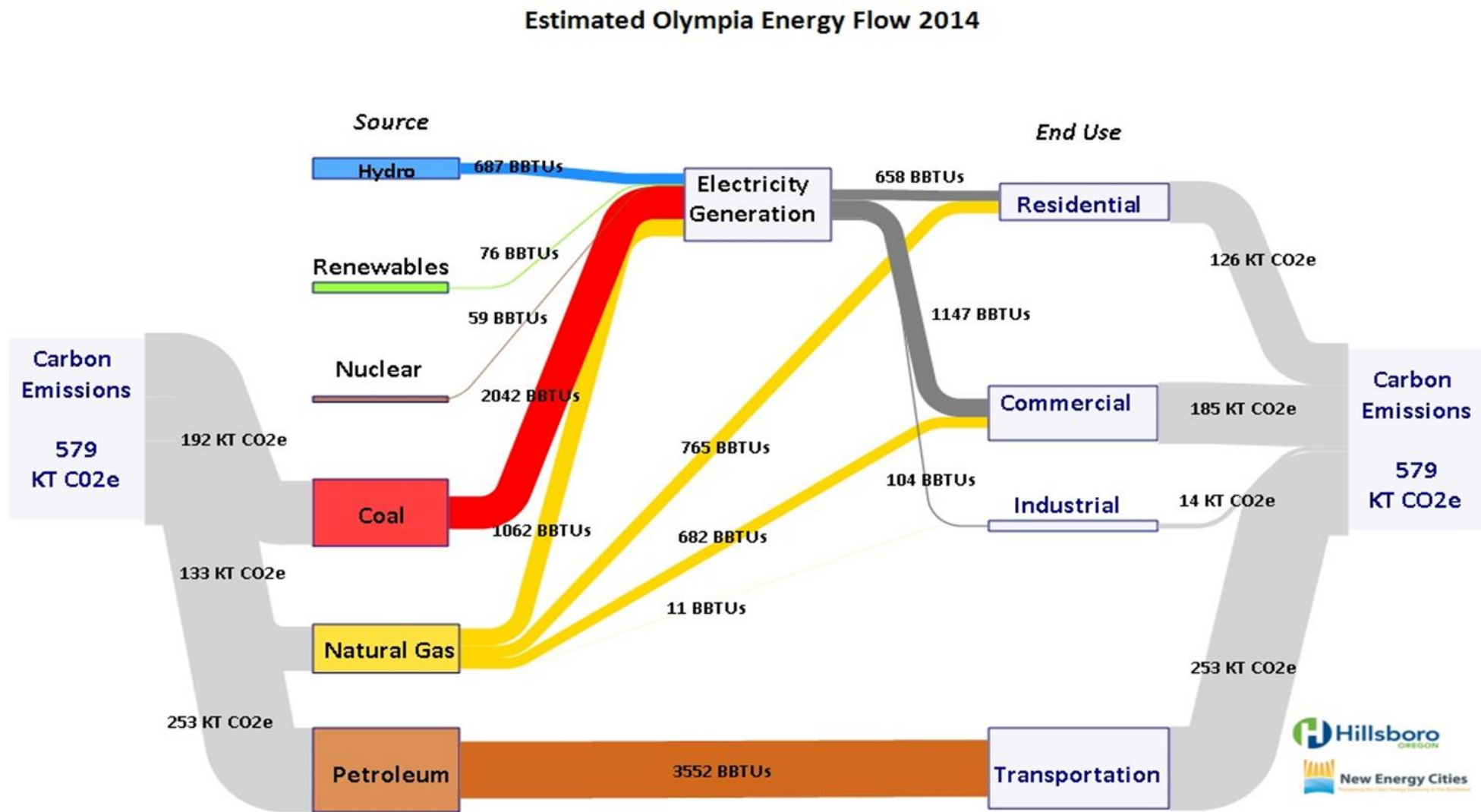


Olympia Emissions

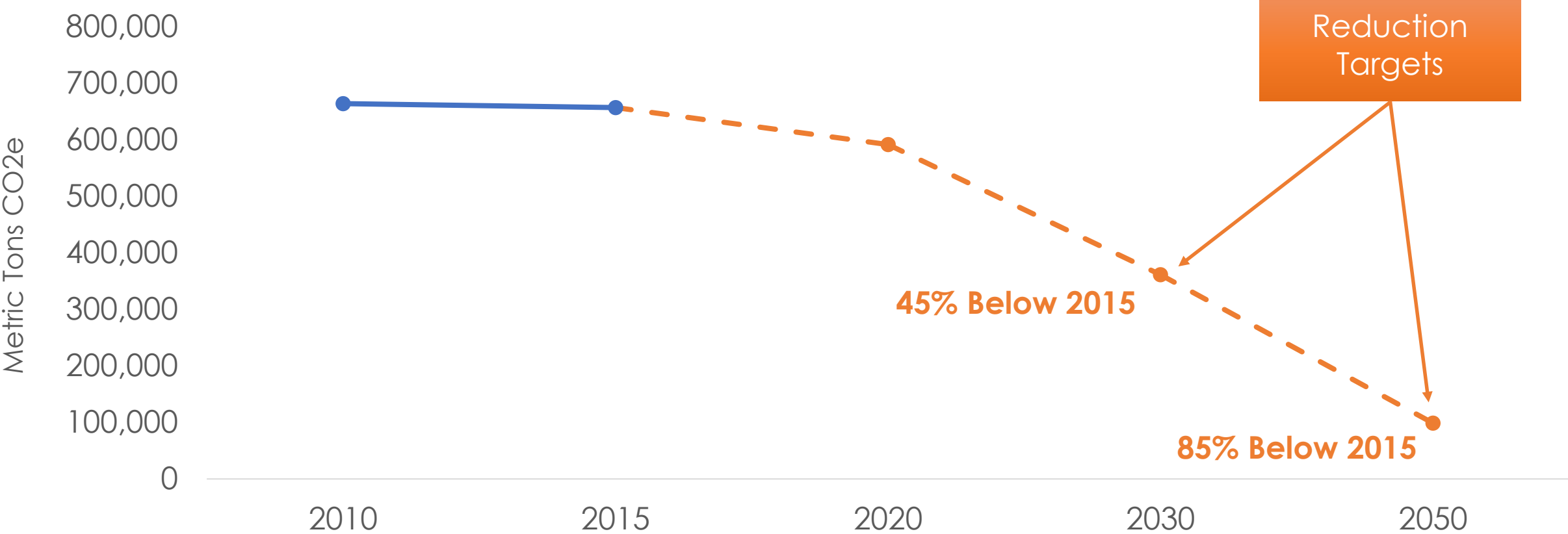
Per Capita Emissions



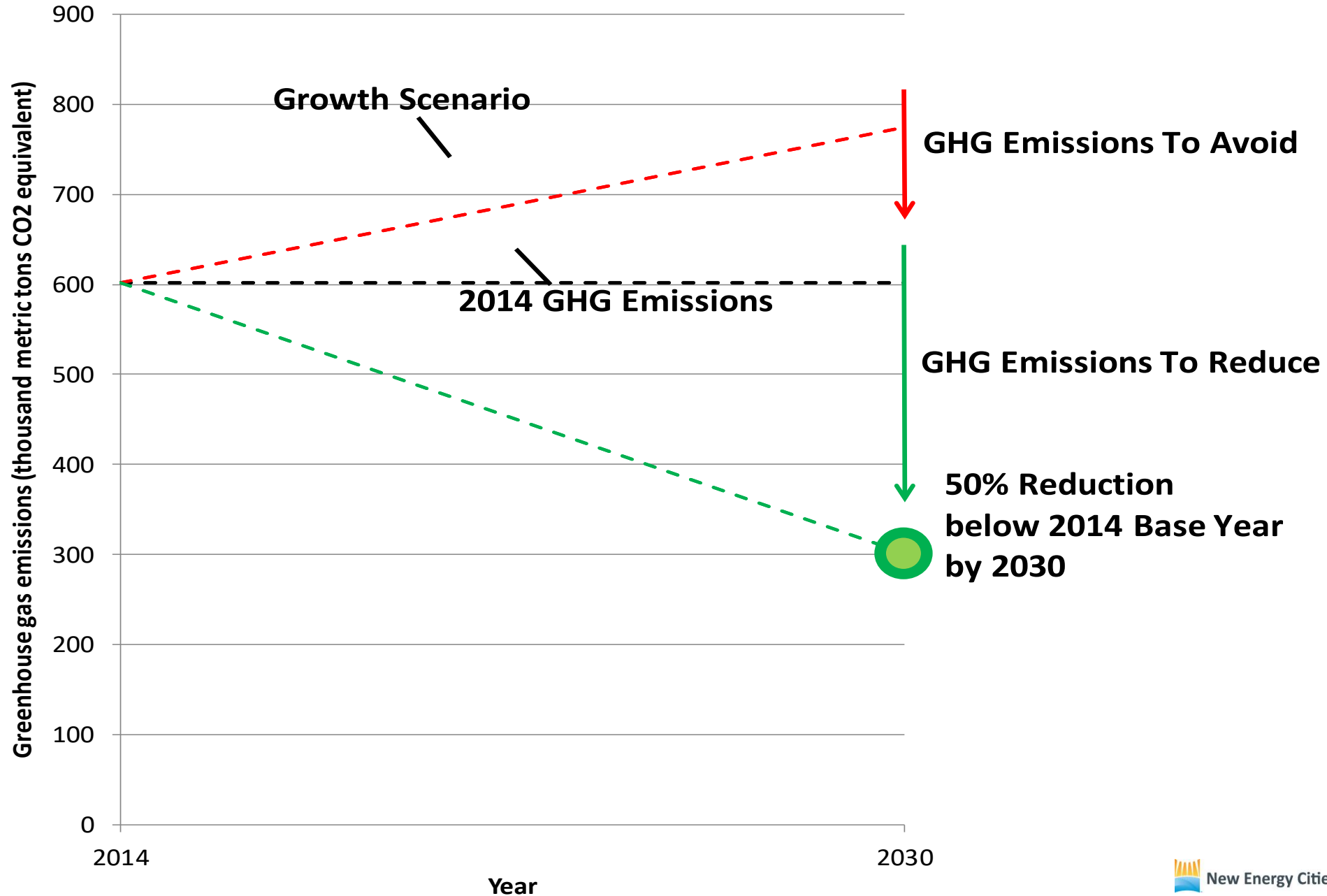
Olympia Emissions – Energy Map



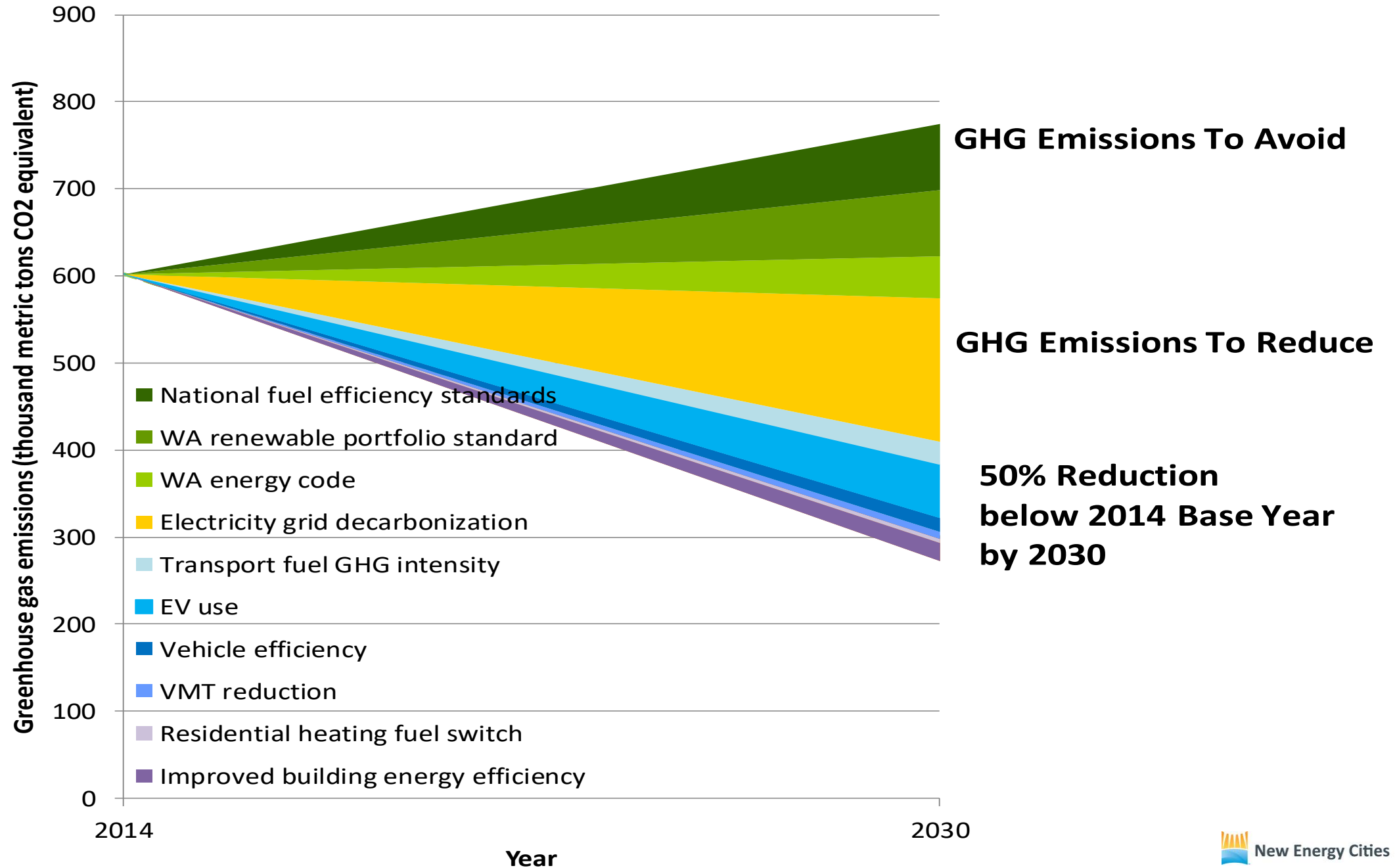
Olympia Emissions



50 x 2030: What Will It Take?



50 x 2030 Goal: Detailed Breakdown



Phase 2 – Scope of Work

- ▶ TRPC will Manage and Coordinate Project
- ▶ Public Engagement
- ▶ Assess Actions
- ▶ Develop Plan and Implementation Strategies
- ▶ Adopt Plan and Implementation Strategies



Phase 2 – Scope of Work

- ▶ 18-24 Months Beginning Late 2018 / Early 2019
- ▶ \$175,000 or \$43,750 per Jurisdiction
- ▶ Considerations
 - ▶ Jurisdictions Joining and Leaving
 - ▶ Structure and Roles



Structure & Roles

Interjurisdictional Policymaker Panel

1 Elected Official from
Each Jurisdiction

Steering Committee

Jurisdictional Staff,
Policymaker Panel,
and TRPC

Consultant Team

Technical Expertise

Stakeholder Committee

Local Residents,
Businesses, Students,
and Issue Experts

Jurisdiction Adoption

- ▶ All Jurisdictions Adopted Common Targets
- ▶ Lacey Approved Phase 2 Scope October 11th
- ▶ Tumwater & Olympia Approved Phase 2 Scope October 16th
- ▶ Thurston County Approved October 30th



Source: City of Portland/Multnomah County

LUEC /Council Comments

- ▶ Recommend Adoption of Common Targets
- ▶ PSE Engagement Critical
- ▶ Evaluation of Consumption Based Emissions Not Included in Phase 2 Scope
- ▶ “Phase 2A” – Identify Early Action Items
- ▶ Focus on Action & Getting to Implementation
- ▶ Regular Updates to LUEC and Finance Committee



Strategic Energy Management Program

2017 Report



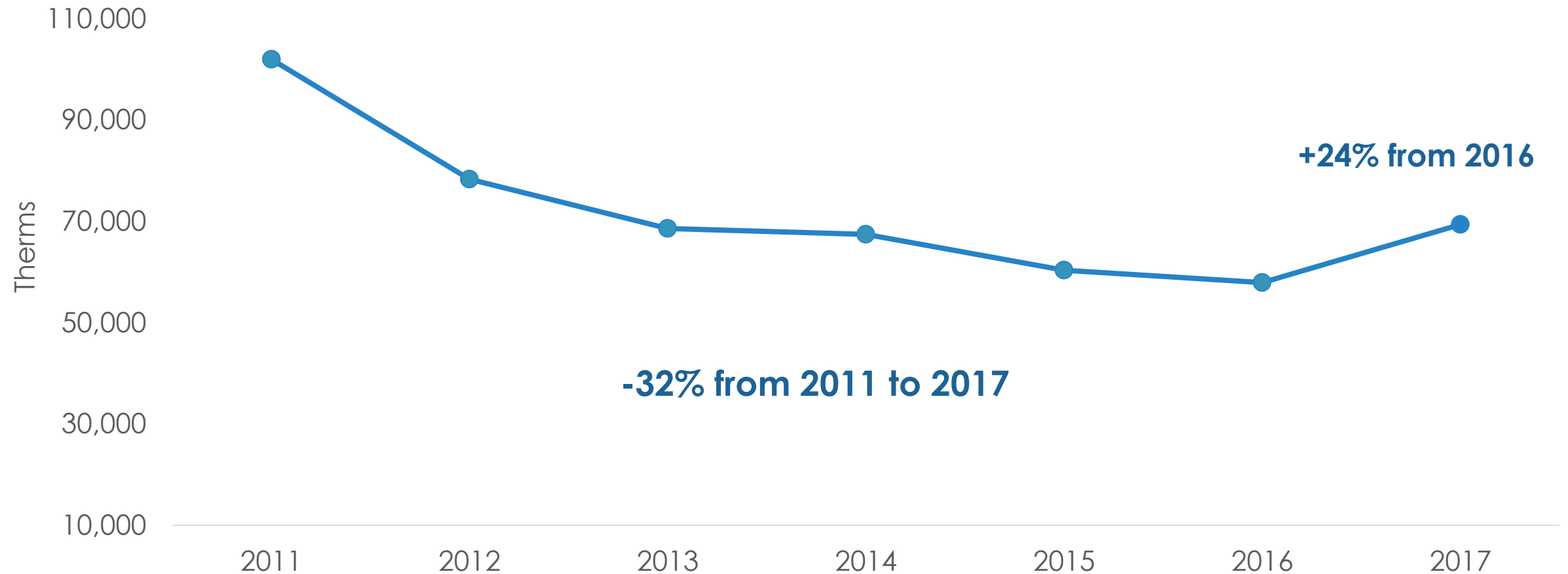
Building Portfolio

Energy Update



olympiawa.gov

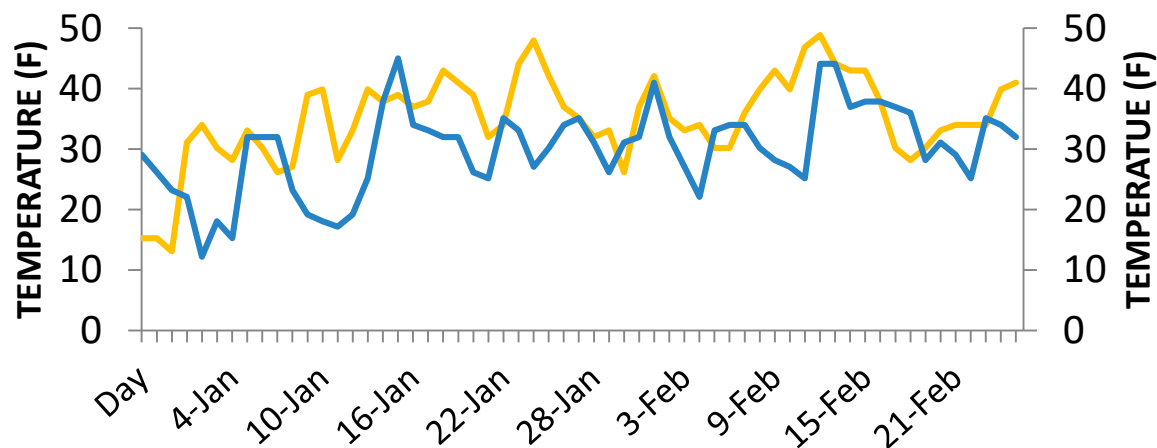
Natural Gas Use – Building Portfolio



Low Temperatures 2017 vs. 2016

January - February

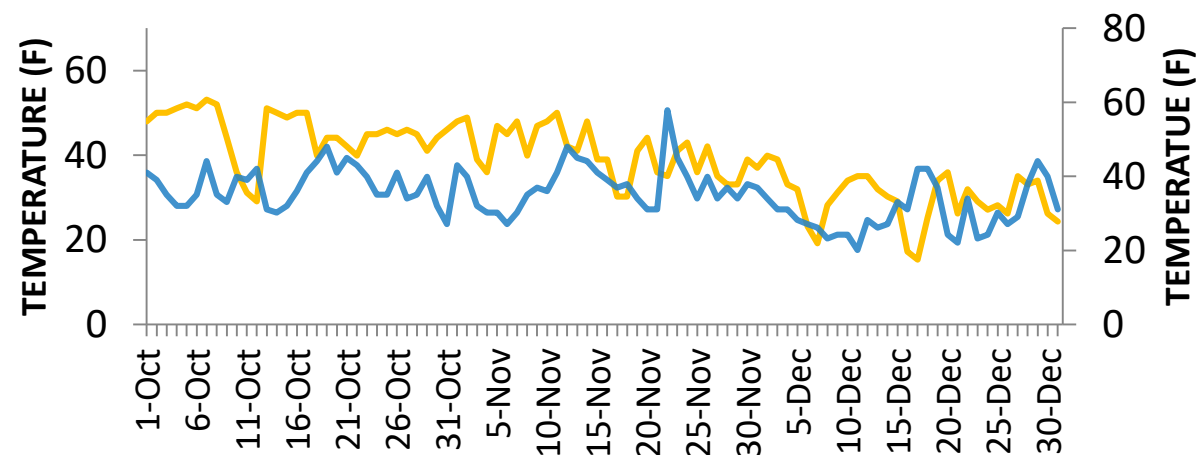
— 2016 — 2017



**Average Temperature
6 Degrees Lower in 2017**

October - December

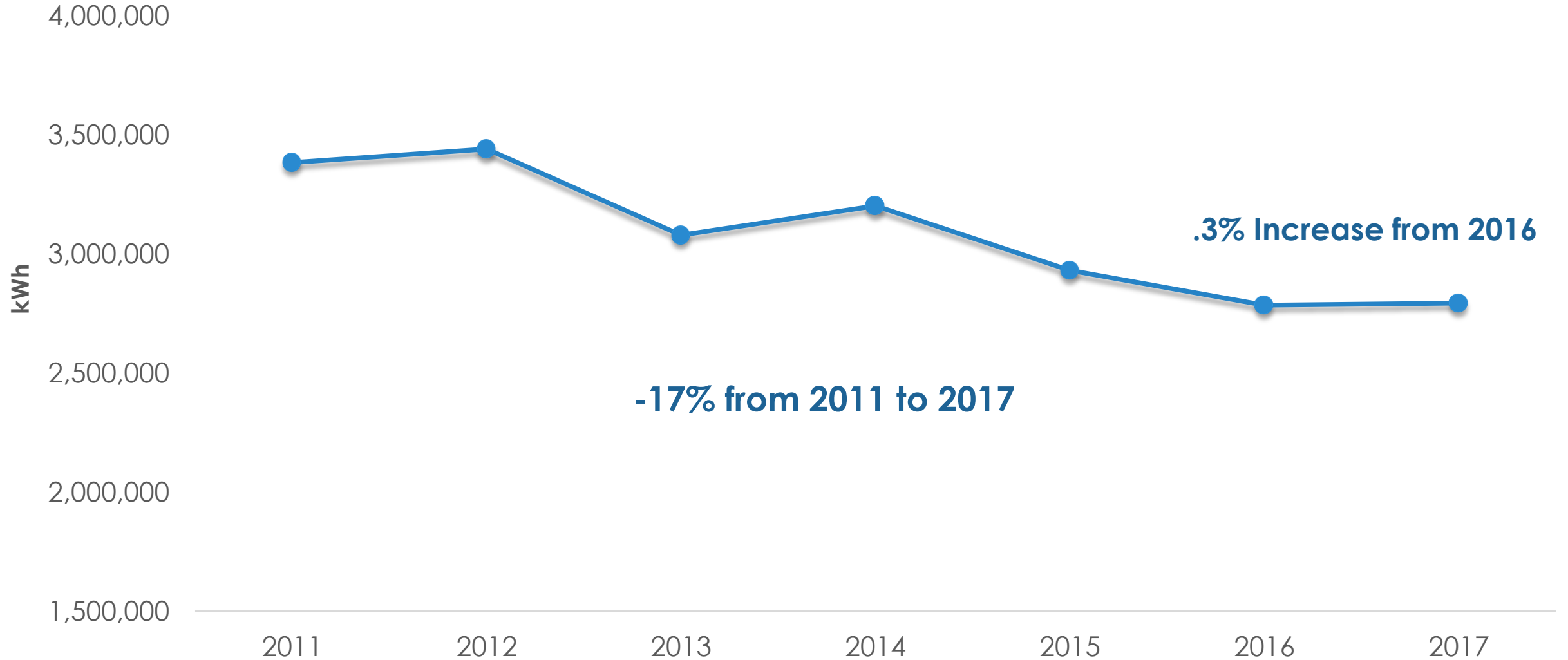
— 2016 — 2017



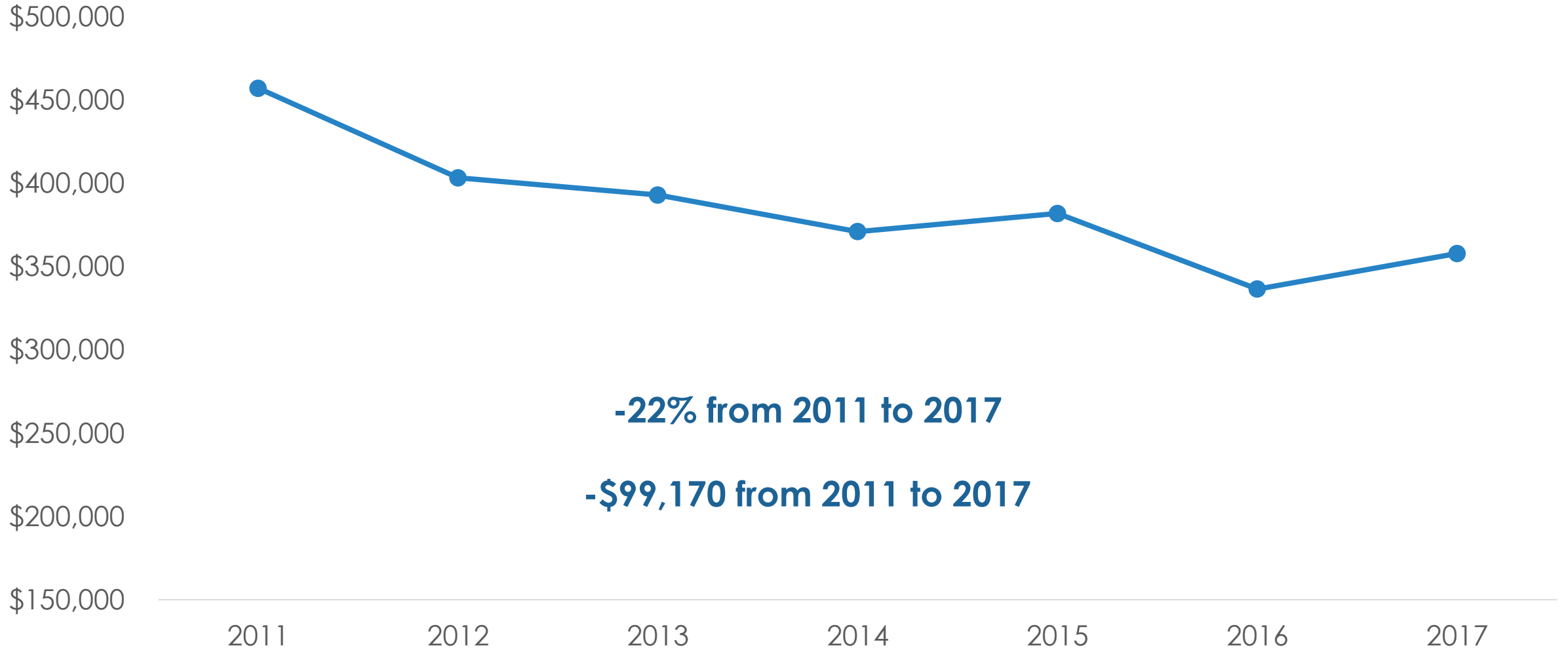
**Average Temperature October
4 Degrees Lower in 2017**

**Average Temperature November
5 Degrees Lower in 2017**

Electricity Use – Building Portfolio



Energy Cost – Building Portfolio



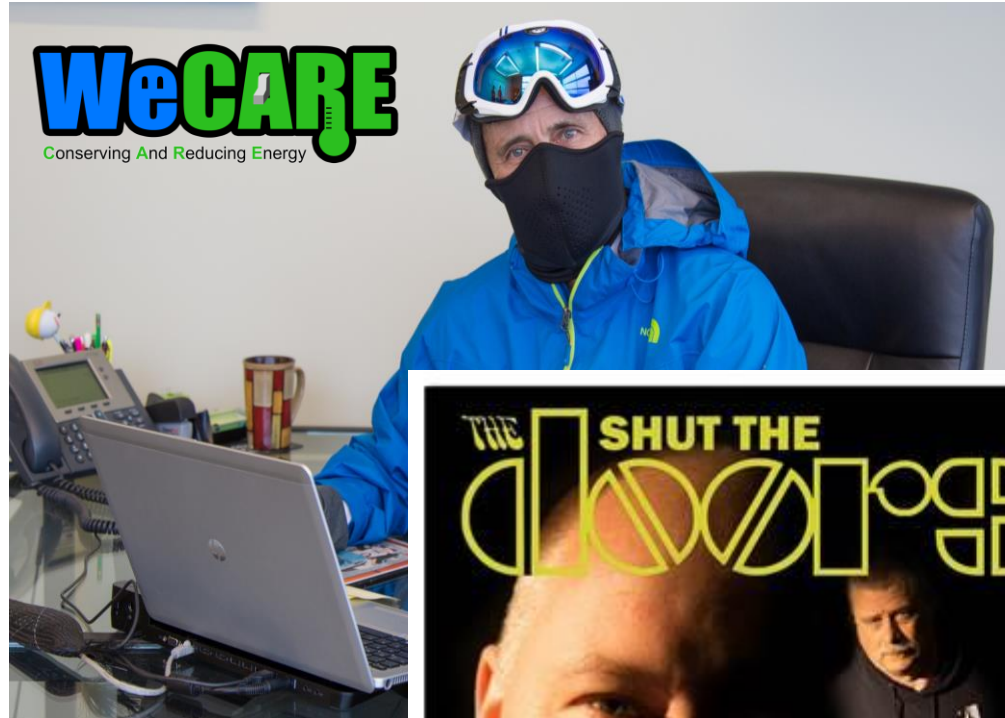
Reduction Efforts

- ▶ Energy Advisory Team
- ▶ HVAC Adjustments
- ▶ LED Conversions
- ▶ Space Heater Audit
- ▶ Occupant Engagement Campaigns

**City Hall
Entrance**



Engagement Campaigns

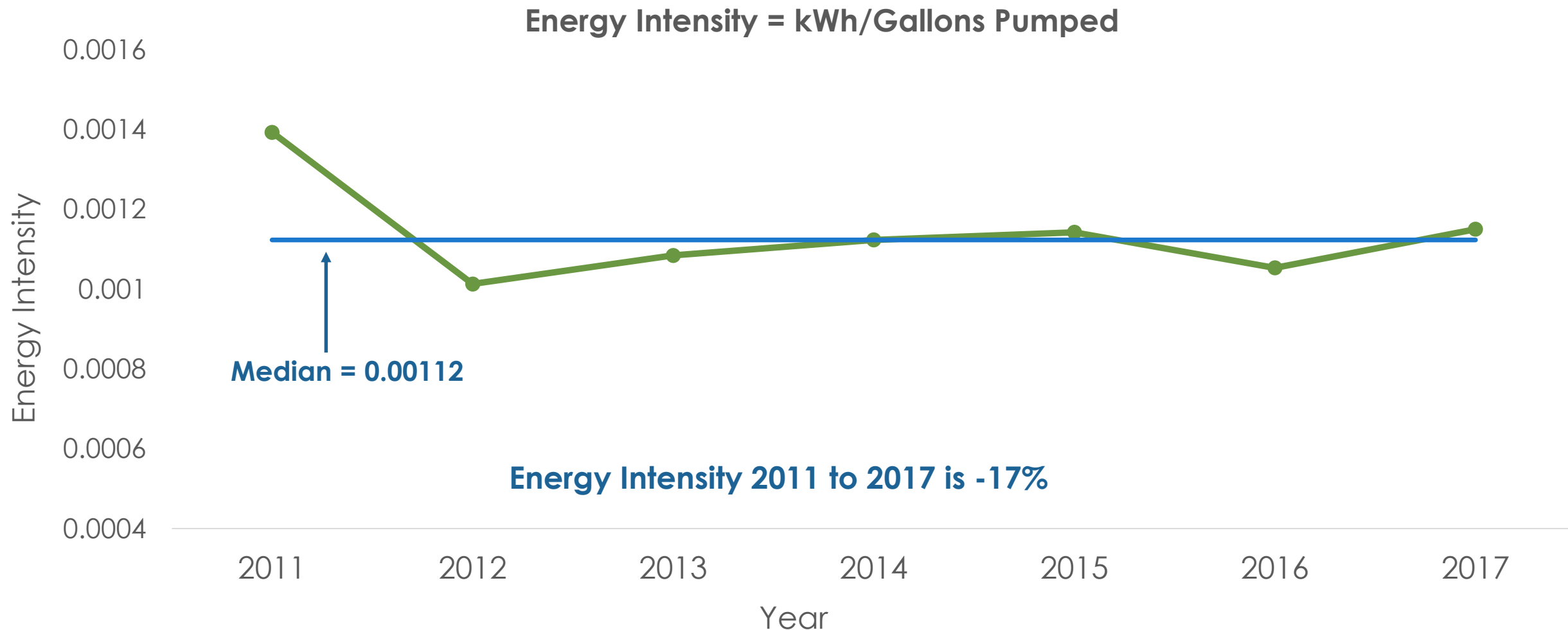


Pump Stations

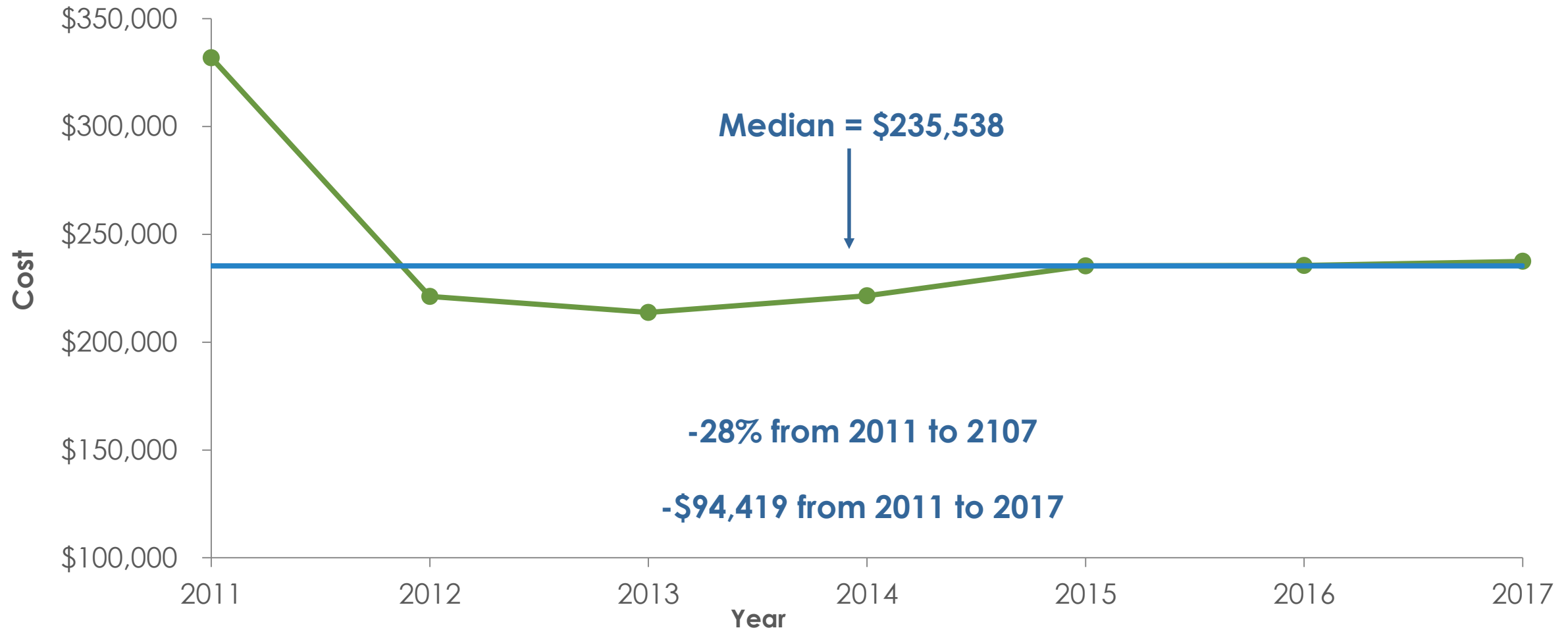
Energy Update



Pump Stations – Energy Intensity

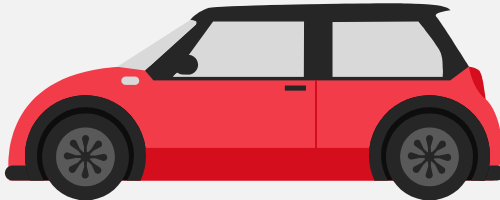


Pump Stations – Energy Cost



SEM Program Results

Year	Target	Electricity % Change	Natural Gas % Change	PSE Grant	Utility Cost Savings	CO ₂ Avoided (Metric Tons)
Year 1 (2015)	-3%	-8.3%		\$3,571	\$31,000	171
Year 2 (2016)	-5%	-2.3%		\$2,205	\$15,000	85
Year 3 (2017)	-5%	-1.1%		\$3,210	\$14,000	80
TOTAL				\$20,986	\$60,000	336



72 Less Cars!



SE M Program Results

Year	Target	Electricity % Change	Natural Gas % Change	PSE Grant	Utility Cost Savings	CO ₂ Avoided (Metric Tons)
Year 1 (2015)	-3%	-8.3%	-2.7%	\$13,571	\$31,000	171
Year 2 (2016)	-5%	-2.3%	-23%	\$4,205	\$15,000	85
Year 3 (2017)	-5%	-1.1%	-15.2%	\$3,210	\$14,000	80
TOTAL				\$20,986	\$60,000	336