

# McAllister Wellfield Water Rights Mitigation Projects Update



**Utility Advisory Committee**  
**March 7, 2019**



# WATER RIGHTS TIMELINE

- Early 1990s Start
- 2008 Tribal and Cities Agreements
- 2008 Initial Mitigation Plan
- 2010 Revised Mitigation Plan
- 2011 Smith Ranch purchased
- 2012 DOE Approval
- 2013 Woodland Creek Online
- 2014 Wellfield Online
- 2015 Springs transferred to Tribe
- 2018 Deschutes Ranch Mitigation
- Ongoing Annual Reports





# WATER RIGHT OVERVIEW

- IN-KIND
  - Relinquished Water Rights
  - Recharge reclaimed water
- OUT-OF-KIND
  - Habitat Restoration
  - Riparian buffers
- ANNUAL REPORT



# OLYMPIA'S PREDICTED DEPLETIONS

- MODELED

- Nisqually River – 7.2 CFS
- Deschutes River – 0.37 CFS
- Woodland Creek – 0.23 CFS
- Lake St. Clair – 0.12 CFS





# WELLFIELD AND PROJECT LOCATIONS



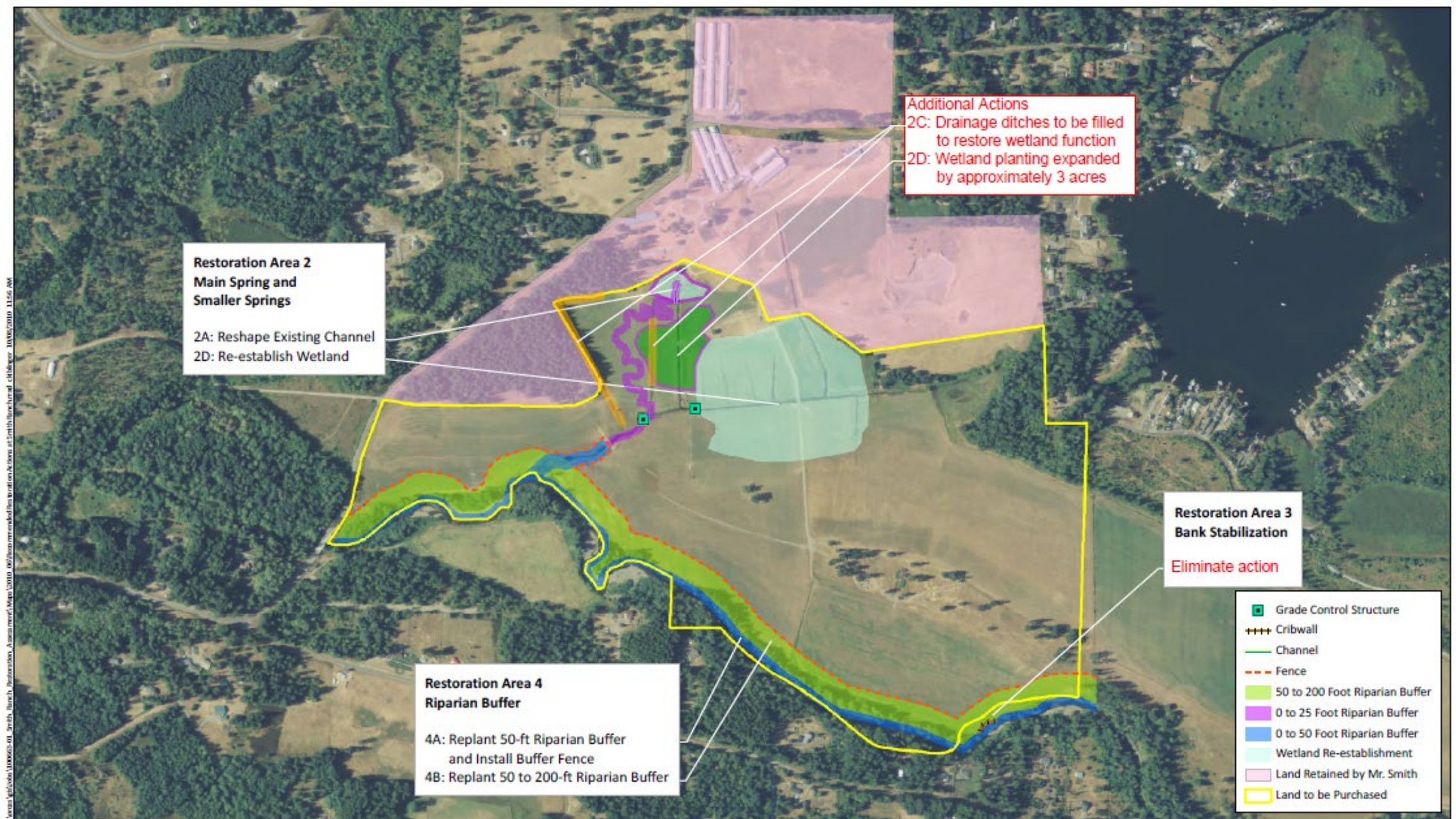
# DESCHUTES RANCH OVERVIEW

- Collaboration with Lacey and Yelm
  - Purchased in 2011
  - ~190 acres
  - >1 mile riverbank
  - Water right relinquished – 0.37 CFS
  - Property management
- 
- Additional Jensen water right relinquished – 0.50 CFS





# DESCHUTES RANCH MITIGATION



From Anchor QEA's Initial Acquisition and Restoration Assessment of the Smith Ranch dated October 2010

Aerial Photo: NAIP 2009.

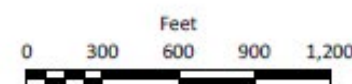


Figure 2

Proposed Restoration Actions at Smith Ranch



# DESCHUTES RANCH

## Habitat Restoration

1 + mile long - 200' wide Deschutes  
River Riparian Forest Planting





# DESCHUTES RANCH

Restored a meandering  
spring-fed channel





# DESCHUTES RANCH

Minor grading  
and filling 4000'  
of ditches  
enhancing  
wetland  
hydrology over  
27 acres





# DESCHUTES RANCH

- COSTS
  - INVESTIGATION AND PURCHASE \$611,000
  - DESIGN AND CONSTRUCTION \$580,000
  - PROPERTY MANAGEMENT \$140,000 BUDGETED
- CONSERVANCY
  - LONG-TERM TRUST FUND



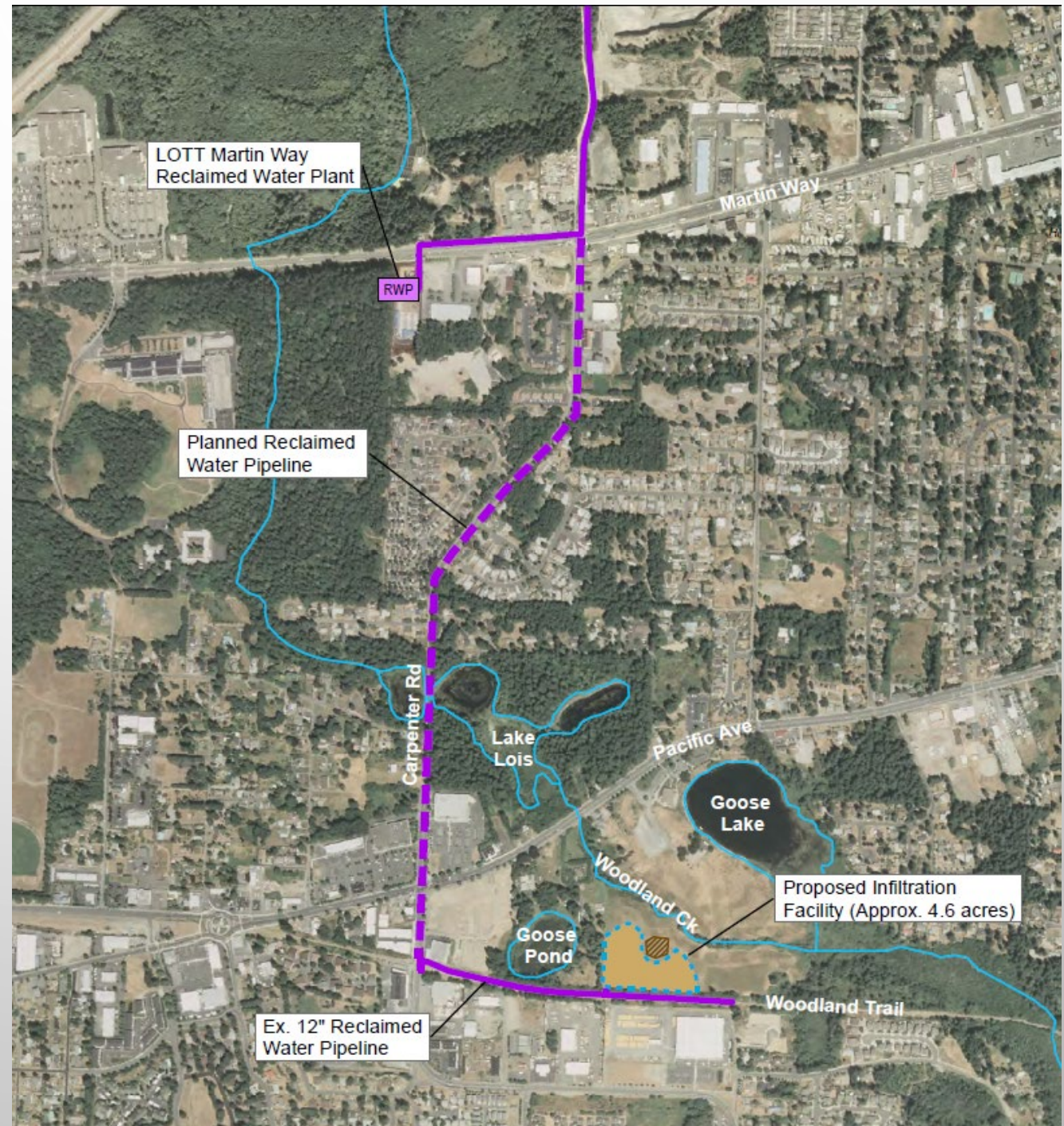
# WOODLAND CREEK MITIGATION

- DEPLETIONS
- IN-KIND - RECHARGE DEPLETIONS TO WOODLAND CREEK THROUGH INFILTRATION OF CLASS A RECLAIMED WATER FROM THE MARTIN WAY RECLAIMED WATER PLANT
- OUT-OF-KIND - PURCHASE OF UNDEVELOPED RIPARIAN PROPERTY (FOX CREEK) – RESTRICT ACCESS – MANAGE HABITAT



# WOODLAND CREEK GROUNDWATER INFILTRATION FACILITY

- COLLABORATIVE EFFORT WITH LOTT AND LACEY
- RECHARGES DEPLECTIONS TO WOODLAND CREEK THROUGH INFILTRATION OF CLASS A RECLAIMED WATER FROM THE MARTIN WAY RECLAIMED WATER PLANT





# WOODLAND CREEK GROUNDWATER RECHARGE FACILITY

- 3 RECHARGE BASINS





# WOODLAND CREEK GROUNDWATER RECHARGE FACILITY

- OPERATIONAL DATA

Year	Total Infiltrated (MG)	5-yr Rolling Average	Comment
2013-2014	134	134	
2015	113.04	123.5	
2016	40.4	95.8	
2017	27.0	78.6	Needed 65
2018	114.8	85.8	Needed 62
2019	115	82.0	Goal for 2019
2020	75	74.4	Minimum need
2021	60	78.4	Minimum need
2022			Planned shutdown



# WOODLAND CREEK GROUNDWATER RECHARGE FACILITY

- RECHARGE FACILITY INVESTIGATION, DESIGN AND CONSTRUCTION  
\$401,000
- FOX CREEK LAND PURCHASE - \$144,000
- BUDGETED ANNUAL OPERATIONAL COST OF \$8,000



# FOX CREEK SITE





**QUESTIONS?**

