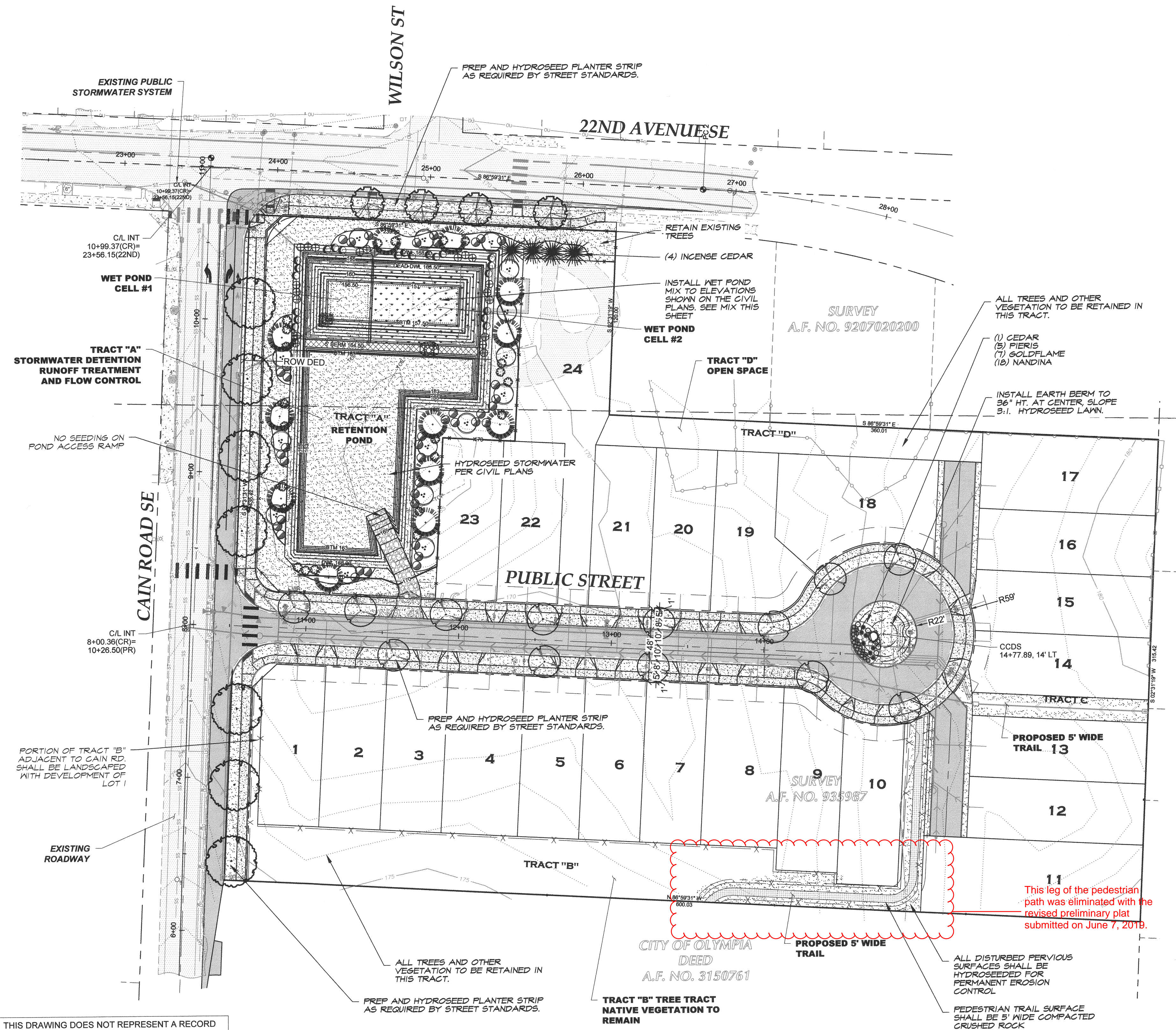


# VILLAGE AT CAIN ROAD

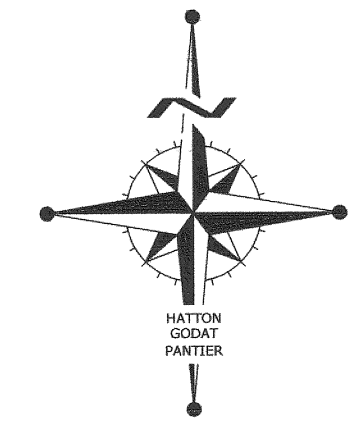
2017 22ND AVENUE, OLYMPIA, WA 98501



THIS DRAWING DOES NOT REPRESENT A RECORD DOCUMENT, UNLESS CERTIFIED BY HATTON GODAT PANTIER.

ANY ALTERATIONS TO THE DESIGN SHOWN HEREON MUST BE REVIEWED AND APPROVED BY HATTON GODAT PANTIER.

NOTE: THE CONTRACTOR SHALL BE FULLY RESPONSIBLE FOR THE LOCATION AND PROTECTION OF ALL EXISTING UTILITIES. THE CONTRACTOR SHALL VERIFY ALL UTILITY LOCATIONS PRIOR TO CONSTRUCTION BY CALLING THE UNDERGROUND LOCATE LINE AT 811 A MINIMUM OF 48 HOURS PRIOR TO ANY EXCAVATION.

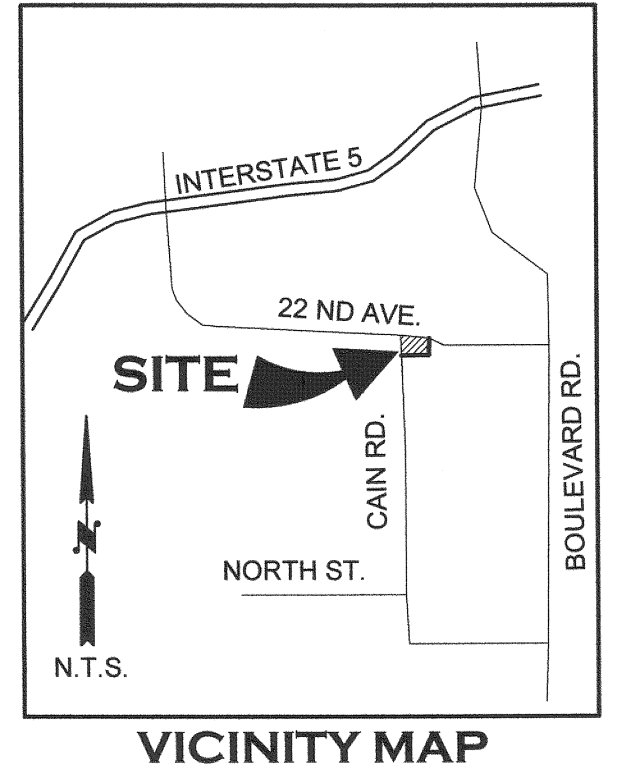


CITY OF OLYMPIA

VERTICAL DATUM - NAVD88  
CITY OF OLYMPIA 2" BRASS CAP  
(LS-46310)  
TOP OF CONC CURB SE SIDE OF  
ROUNDAABOUT OF BOULEVARD RD & 22nd  
(TCHP CONTROL POINT #6153)  
ELEVATION = 205.29

MERIDIAN HORIZONTAL DATUM  
CITY OF OLYMPIA COORDINATE SYSTEM  
BASED ON THE NORTH LINE OF  
WILSON D.L.C. NO. 45

40 20 0 40 80  
SCALE: 1" = 40'



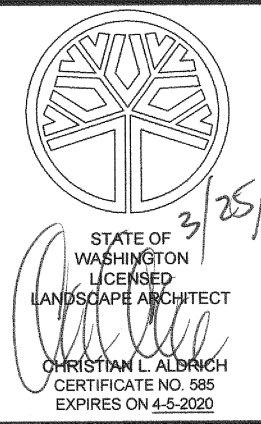
PREPARED FOR  
SUMMIT LAND DEVELOPMENT, LLC  
CONTACT: ROB RICE  
1868 STATE AVENUE  
OLYMPIA, WA 98501  
(360) 754-7010

## PLANT SCHEDULE

SYMBOL	BOTANICAL NAME	COMMON NAME	SIZE	SPAC. NOTES	QTY.
	UTILITY TREE <i>Cornus kousa</i>	Kousa Dogwood	2" CAL.	B#B	4
	STREET TREE <i>Acer t. x. A.p. 'Warrenred'</i>	Pacific Sunset Maple	2" CAL.	B#B	7
	<i>Malus x 'Prairifire'</i>	Prairifire Crabapple	2" CAL.	B#B	13
	EVERGREEN TREE <i>Calocedrus decurrens</i>	Incense Cedar	6'-7' HT.	B#B	4
	<i>Chamaecyparis nootkatensis 'Pendula'</i>	Weeping Alaskan Cedar	6'-7' HT.	B#B	1
	SHRUB & GROUNDCOVERS <i>Spiraea bumalda 'Goldflame'</i>	Goldflame Spirea	2 GAL.		7
	<i>Pieris japonica 'Variegata'</i>	Variegated Jap. Pieris	5 GAL.		5
	<i>Nandina dom. Gulf Stream'</i>	Gulf Stream Nandina	3 GAL.		18
	WET POND PLANT MIX <i>Scirpus acutus</i>	Hardstem Bulrush	PLUGS	36" O.C.	80
	<i>Scirpus microcarpus</i>	Small Fruited Bulrush			80
	<i>Sparganium emersom</i>	Burreed			80
	<i>Sparganium eurycarpum</i>	Burreed			80
	<i>Veronica sp.</i>	Marsh Speedwell			80
	<i>Thuja plicata</i>	Western Red Cedar	6'-7' HT.		12
	<i>Acer circinatum</i>	Vine Maple	6'-7' HT.		15
	<i>Cornus stolonifera</i>	Red-Twig Dogwood	2 GAL.	5' O.C.	21
	<i>Rubus spectabilis</i>	Salmonberry	2 GAL.	5' O.C.	20
	<i>Physocarpus capitatus</i>	Pacific Ninebark	2 GAL.		22
	<i>Vaccinium ovatum</i>	Evergreen Huckleberry	2 GAL.		39
	HYDROSEED LAWN				
	LANDSCAPE BOULDERS - 2'-3' BASALT ROCK CLUSTERS				

- NOTES:
- AN IRRIGATION SYSTEM PROVIDING FULL COVERAGE IN ALL LAWN AND SHRUB AREAS SHALL BE INCLUDED IN THIS PROJECT.
  - LANDSCAPING AND IRRIGATION SYSTEM SHALL BE PROFESSIONALLY MAINTAINED FOR THE LIFE OF THIS PROJECT.
  - FINAL PLANT QUANTITIES AND LOCATIONS WILL BE DETERMINED BY FINAL APPROVED LANDSCAPE PLAN

DESIGNED BY: CA  
DRAWN BY: DL  
CHECKED BY: CL  
DATE: MARCH 2019  
SCALE: 1" = 40'



HATTON GODAT PANTIER  
AND  
ENGINEERS  
AND SURVEYORS  
3910 MARTIN WAY E. SUITE B  
OLYMPIA, WA 98506  
TEL: 360.943.1599 FAX: 360.357.6299  
hatterpantier.com

DATE: \_\_\_\_\_  
REVISIONS: \_\_\_\_\_

VILLAGE AT CAIN ROAD  
2017 22ND AVENUE, OLYMPIA, WA 98501

## PRELIMINARY LANDSCAPE PLAN

AGENCY NO. 18-3178  
SHEET: 1 OF 1  
E:\landscape\17-000\17-104  
INDEX: 17-104-lac.dwg  
JOB: 17-104