



WASTE RESOURCES UPDATE



Council Study Session Outcome

October 3, 2019

Gary Franks, Director

Ron Jones, Senior Planner



olympiawa.gov

AGENDA



- Background
- The City's Response
- Recommended Actions
- Outreach Plan

TIMELINE

- UAC Budget Presentation – Recycling Update Summer of 2018
- Council Briefing September 2018
- UAC Briefing in April 2019
- UAC 2019 Budget Presentation - Revenue Loss
- Council Brief and Program Recommendation September 2019

CITY'S RESPONSE TO DATE

1. Manage Finance
2. Educate the public
3. Reduce Contamination
4. Program Evaluation
 - Evaluate acceptable items list

2019 Proposed Utility Finance

Revenue Shortfall:	-\$460,148
5.5% Rate Increase	= \$195,000
• Rely on Cash	= \$293,000

Impact on Customer, Bi-Monthly W/Recycle			
	2018	2019	Difference
20-gallon	\$20.82	\$21.17	\$1.14
35-gallon	\$35.96	\$37.93	\$1.97
65-gallon	\$49.10	\$51.80	\$2.70
95-gallon	\$85.08	\$89.75	\$4.67



2020 Proposed Utility Finance

Residential Revenue Shortfall: -\$499,941

2.3% Rate Increase = \$97,658

• Commercial Revenue = \$405,689

Impact on Customer, Bi-Monthly W/Recycle			
	2019	2020	Difference
20-gallon	\$21.96	\$22.46	\$.50
35-gallon	\$37.94	\$38.81	\$.87
65-gallon	\$51.80	\$52.99	\$1.19
95-gallon	\$89.76	\$91.82	\$2.06

EDUCATION & OUTREACH

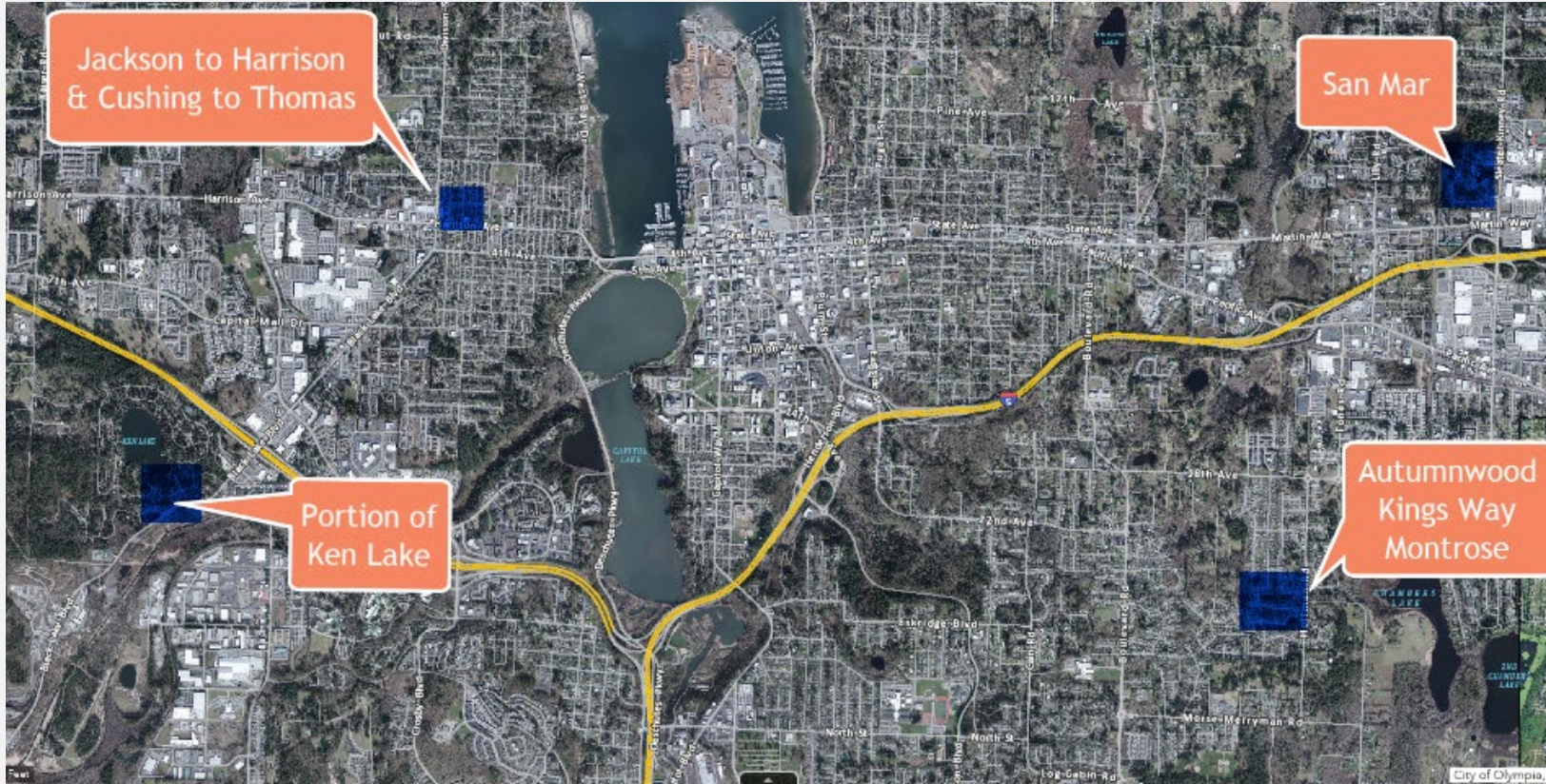
Post Cards & Bill Inserts



recyclecoach™



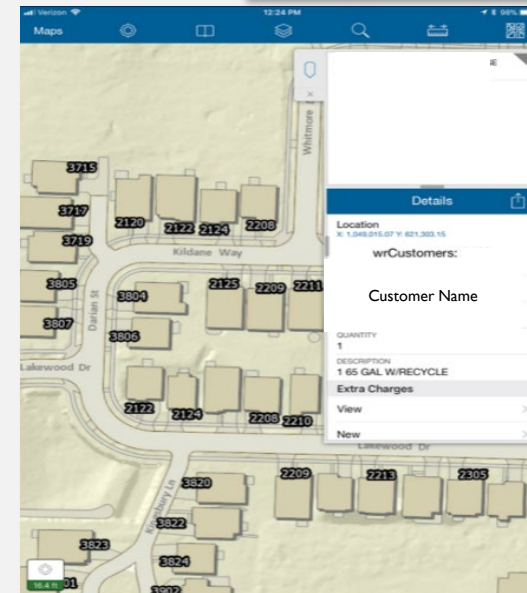
REDUCE CONTAMINATION



- Four Areas – 80 Homes with three follow up letters
- Baseline recycle sort – Contamination ranged 10% - 40%
- Common and Problem Contaminants
- Initial Results

ON-BOARD COMPUTER – CUSTOMER INFORMATION TO REDUCE CONTAMINATION

- GIS Routing
- Customer Information
- Record on iPad
- Empty or do not empty and leave correction notice
- Phone call, site visit, possibly remove recycling



CHANGES REQUESTED FROM PROCESSOR

Plastic Containers - *NO LIDS!* #1 PET & #2 HDPE only



Paper - *NO LIDS!*



Metal - *NO LIDS!*



Glass - *NO LIDS!*



WHY THE REQUEST?

- Its abrasive – destroys machinery (MRF, Paper Mill, Collection Trucks)
- Degrades recyclable paper
- Most mills won't accept single stream due to glass – MRF's in a race for quality
- Higher number of worker injuries
- Takes the long road to landfill to be reused as Alternative Daily Cover (ADC)
- Raw Material is inexpensive – cheap to make
- Glass Costs the City Money

WHY THE REQUEST TO REMOVE POLY-COATED PRODUCTS

- Paper containers coated with plastic – some contain foil (soy milk)
- Designed to resist moisture
- Difficulty repulping thus out throw/contaminate at most mills
- Requires special pulping equipment/process
- China issued “zero tolerance items” presence of 1 milk carton cause rejection not just load but entire order
- Indonesia recently announced that they will soon implement the same quality standards as China



PROGRAM EVALUATION (GLASS)

4,800 tons of commingled recycling. Glass is 22% or 1,050 tons

Option	Cost/Ton	Budget Impact	Pro	Con
1. Keep Glass Commingled	\$201	\$211K Transport, process and dispose as ADC	<ul style="list-style-type: none"> • Easy for customer • No outreach required 	<ul style="list-style-type: none"> • Impacts quality of other recyclables. • Glass is transported to the landfill and reused as ADC
2. Glass Separate at the Curb	\$400	Manual \$550K - \$300K Auto \$1.3M - \$270K	<ul style="list-style-type: none"> • Glass can be collected for fill and road base • Outside potential to be recycled • Far less in commingle 	<ul style="list-style-type: none"> • Adds truck(s) and driver • Rate impact • Glass does get reused • Will not capture 100% • Worker injuries • Glass mess on streets. • Aggregate market not guaranteed
3. Glass Drop-off (Recommended)	Varies \$30-\$119	\$90K - \$170K Savings over glass in comingled	<ul style="list-style-type: none"> • Can use existing trucks/drivers • Glass as road base and fill. • Contaminated loads to landfill • Less in commingle 	<ul style="list-style-type: none"> • Requires customers to driver to drop-off site. • May be barrier to participation. • May not capture large amounts
4. Glass Direct to Landfill	\$119	\$90K savings compared to glass in commingle	<ul style="list-style-type: none"> • Easy communication • May decrease glass in recycle the most. 	<ul style="list-style-type: none"> • Customers may disagree • No option to recycle or recover

COMPARISON TO OTHERS

Community	Glass	Recent Changes
City of Tacoma	<ul style="list-style-type: none"> Currently collect glass source separated at the curb. 	<ul style="list-style-type: none"> Proposed switching to glass drop-off at August 13 council study session. Customers would have the option to drop off at 5 locations or put in the trash. About 56,000 households
King County	<ul style="list-style-type: none"> Glass in single-stream. Most or all cities contract with private haulers. Material from nearby recycle processors is taken to glass cullet sorting facility and then to the glass bottling plant in Seattle. 	<ul style="list-style-type: none"> Responsible Recycling Task Force. Recommended removal of plastic bags.
City of Spokane	<ul style="list-style-type: none"> Currently single-stream 	<ul style="list-style-type: none"> Piloting glass drop off. Do not want glass in garbage because Spokane's trash goes to a waste to energy facility.
Thurston County (except Olympia)	<ul style="list-style-type: none"> Glass collected source separated. Taken to concrete recyclers for use as aggregate material. Most commonly used as subgrade Customers must provide their own container 	<ul style="list-style-type: none"> Since China Sword, cartons are no longer accepted.

RECOMMENDED ACTIONS

1.) Remove glass from commingled recycle

- Create satellite drop at two locations
- Justice Center & Westside (TBD)
- Residents can also use Thurston County Transfer Station.

2.) Remove poly-coated materials from recycle

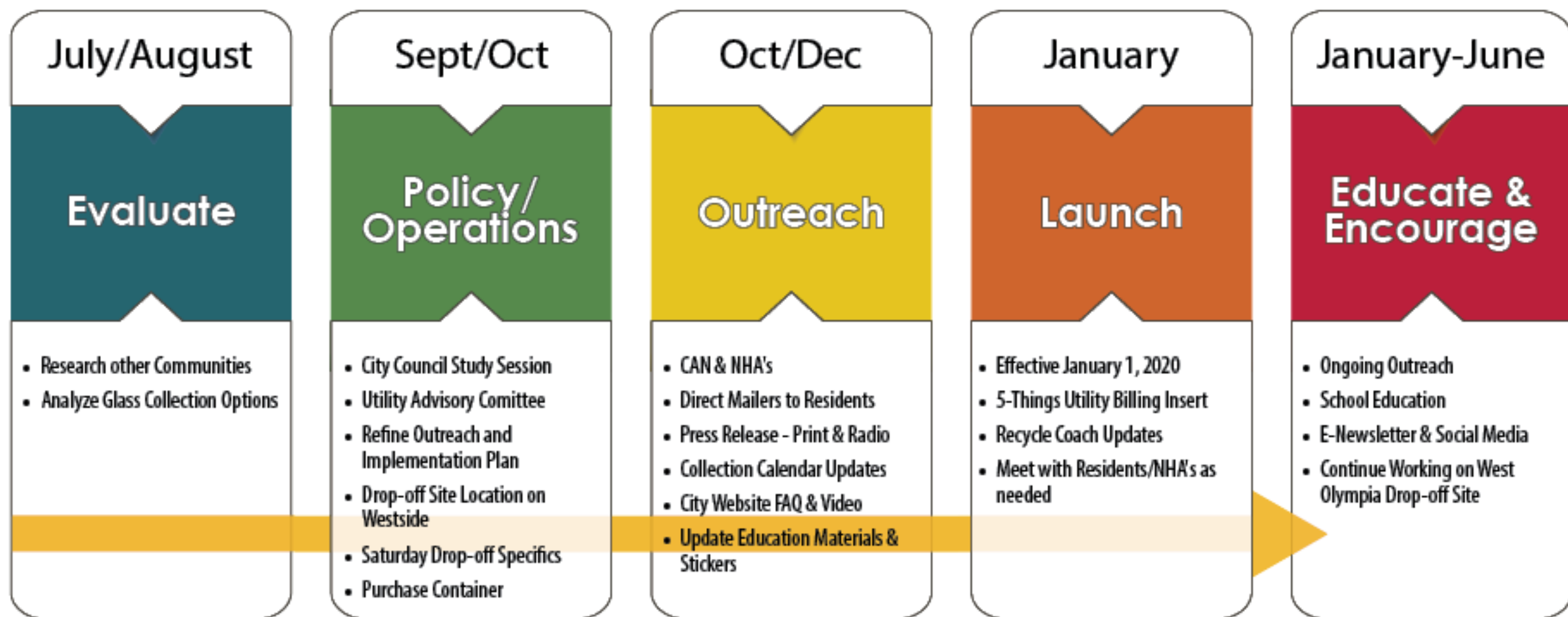
3.) Coordinate with UAC to implement Outreach and Education Strategy

COUNCIL RESPONSE

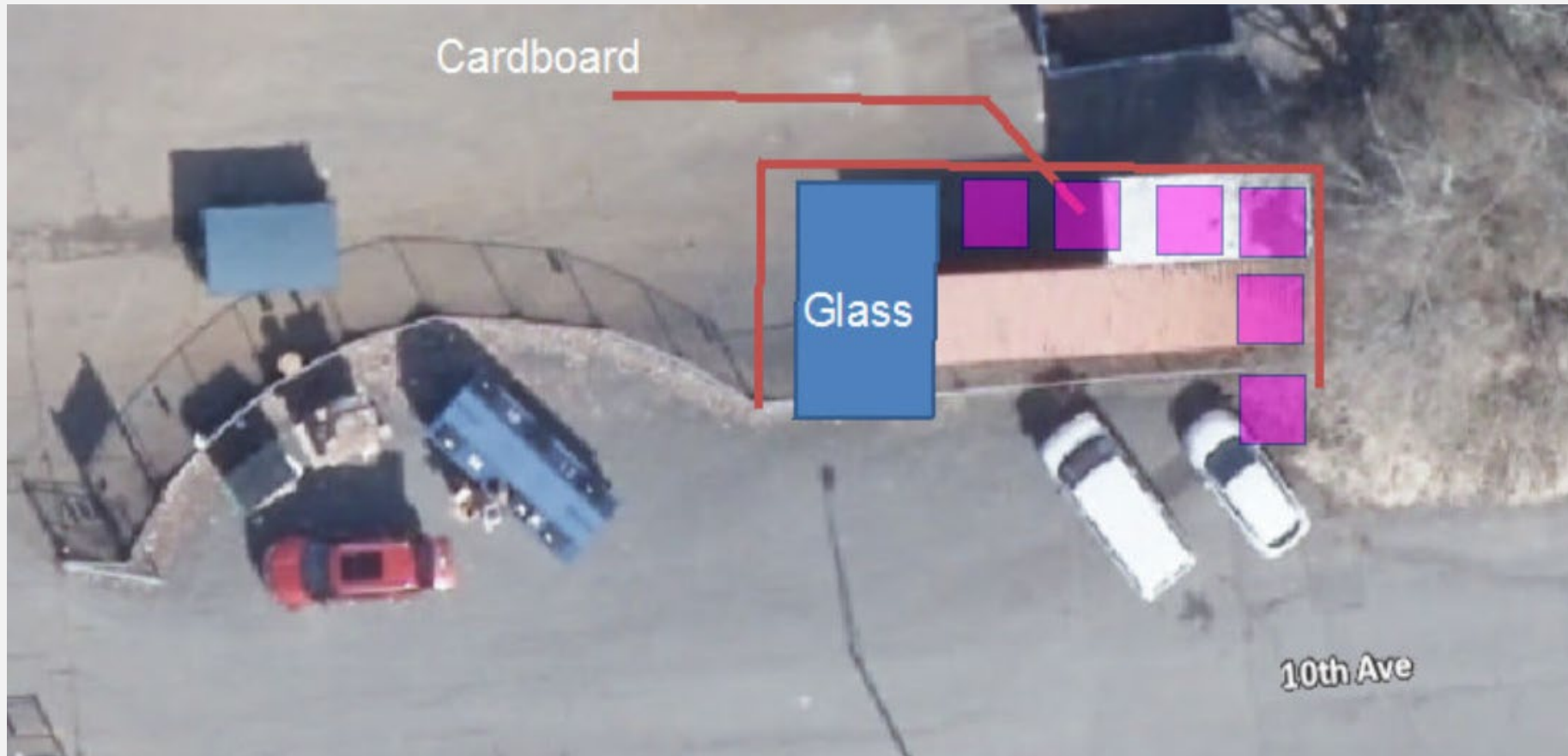




Glass Removal Timeline



LOCATION #1 SATURDAY DROP OFF SITE



WEST SIDE LOCATIONS



WESTSIDE LOCATION



OTHER POSSIBLE LOCATIONS

- Haggens
- Sunrise Park
- Safeway
- Ace Hardware Property
- Caton Way/Automall (right of way area – culdesac)

THANK YOU!

Questions?

