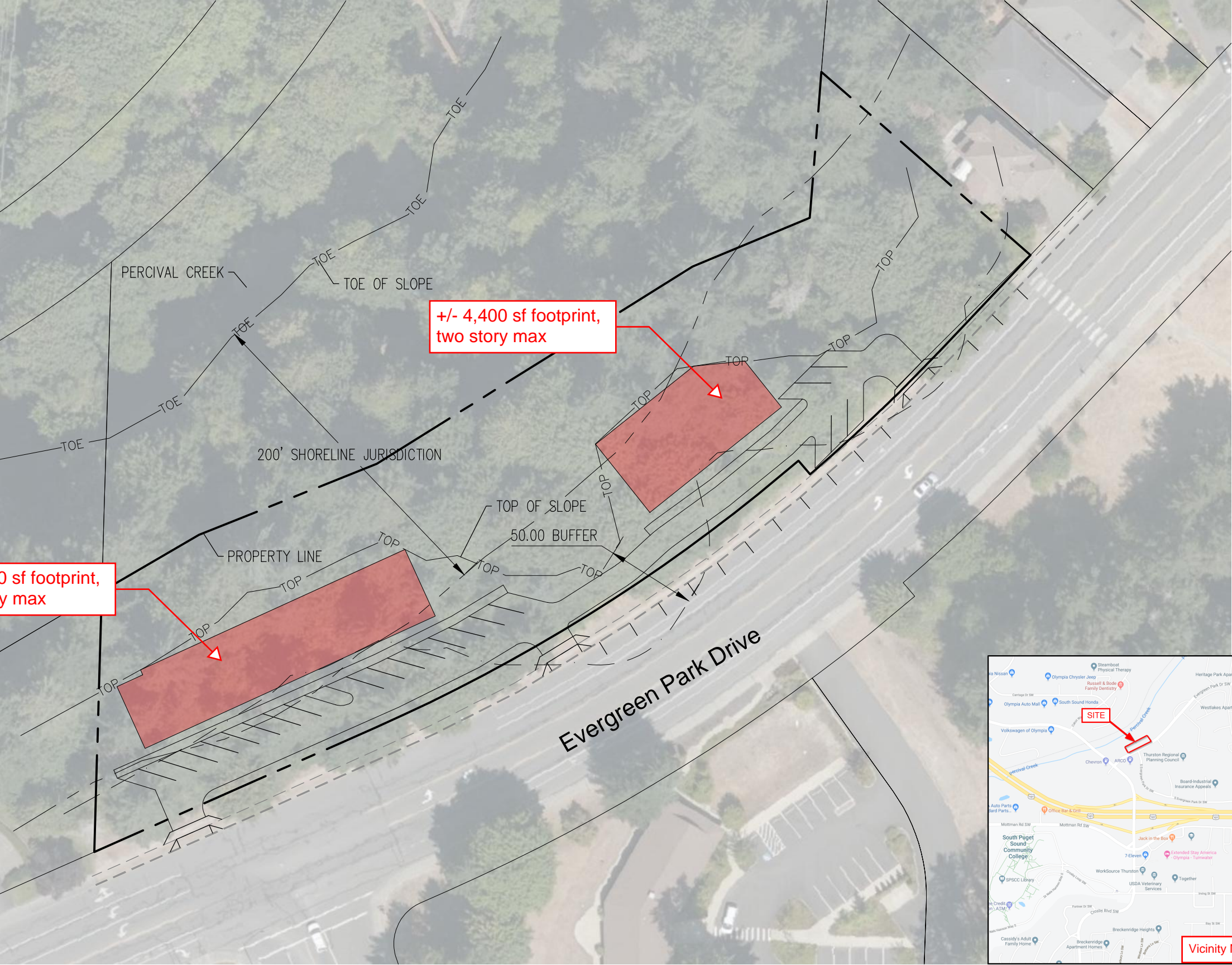


+/- 7,200 sf footprint,  
two story max

+/- 4,400 sf footprint,  
two story max



N  
1"=60'

**PARKING:**  
On-Site: 24 Stalls  
Street: 12 Stalls  
Total: 36 Stalls

1.5 Stalls / Unit = 24 possible units

**STORMWATER:**  
Pervious pavements and underground detention

