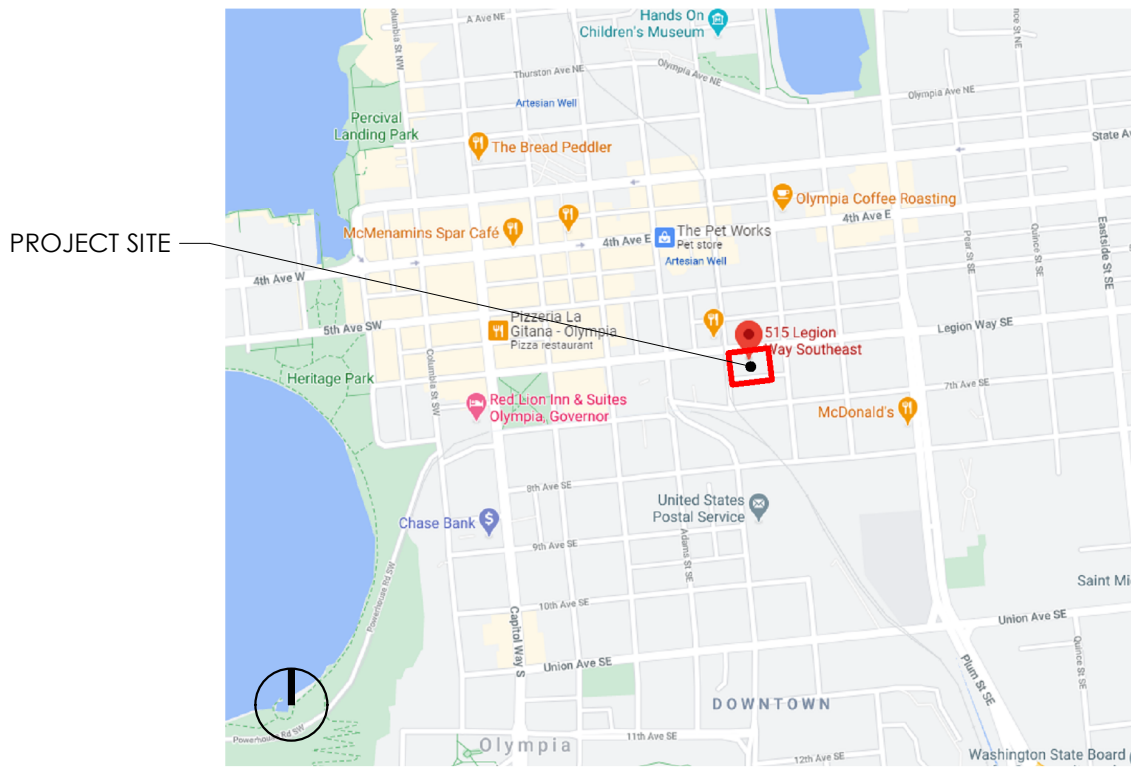


VICINITY MAP - SITE LOCATION



GENERAL NOTES

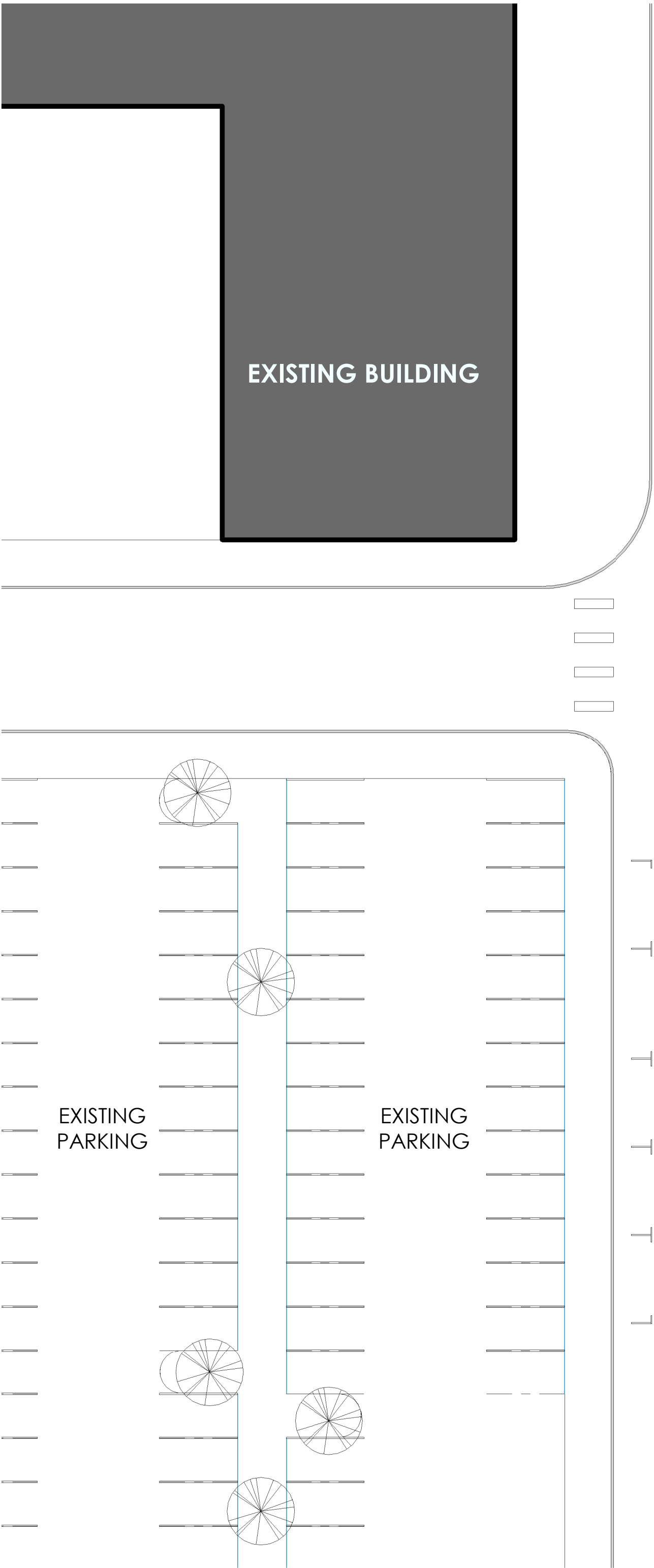
1. DRAWINGS ARE FOR GENERAL BUILDING AND SITE LAYOUT. SEE SEPARATE CIVIL DRAWINGS FOR ADDITIONAL SITE DEVELOPMENT SPECIFICS.
2. DRAWINGS ARE FOR GENERAL BUILDING AND SITE LAYOUT. SEE SEPARATE LANDSCAPE ARCHITECTURAL DRAWINGS FOR SPECIFICS.
3. SITE LIGHTING PER ELECTRICAL DRAWINGS.
4. SEE FLOOR PLANS FOR ADDITIONAL INFORMATION.

SITE LEGEND

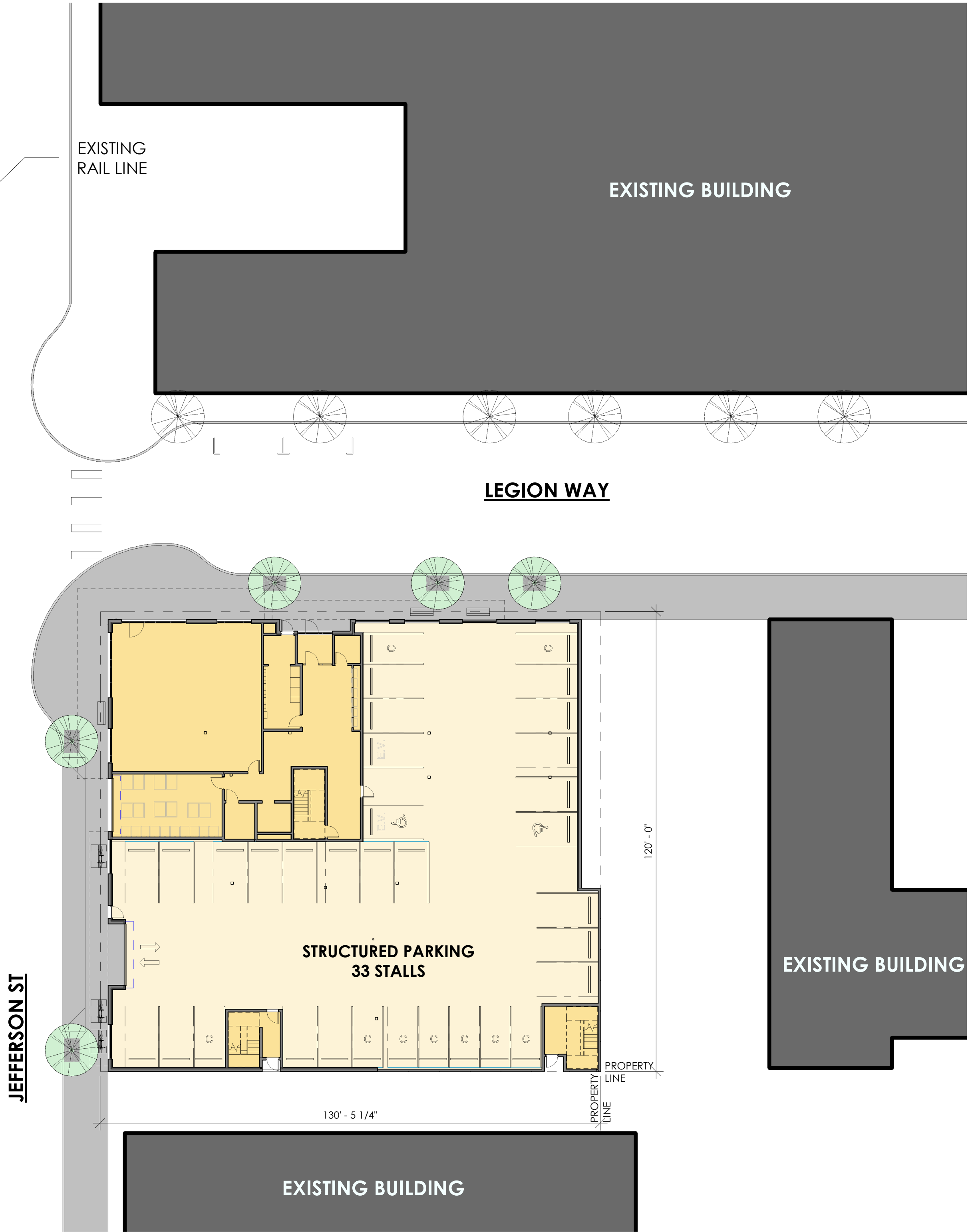
- BUILDING FOOTPRINT
- NEW ASPHALT HARDSCAPE (IMPERVIOUS)
- NEW CONCRETE HARDSCAPE (IMPERVIOUS)
- EXISTING HARDSCAPE (IMPERVIOUS)
- NEW LANDSCAPE (PERVIOUS)
SEE LANDSCAPE DRAWINGS FOR ADDITIONAL INFORMATION
- EXISTING ADJACENT BUILDINGS
- PROPERTY LINE
- DASHED LINE OF AWNING ABOVE, TYPICAL.

PARKING SUMMARY

REQUIRED VEHICLE PARKING REQUIREMENTS (OMC 18.38.040):	
VEHICLE PARKING PROPOSED:	
OFF STREET PARKING PROVIDED =	33 SPACES
ON STREET PARKING PROVIDED =	SPACES
TOTAL SPACES PROVIDED =	33 SPACES
30 % OF ALL SPACES CAN BE COMPACT =	10 SPACES
33 X 0.30 =	9 SPACE
PROVIDED =	
ACCESSIBLE PARKING REQUIRED (OMC 18.38.120)	
2 SPACES MIN. REQUIRED PER 26-50 PARKING SPACES =	2 SPACES
PROVIDED =	2 SPACES
5% OF ALL SPACES SHALL BE ELECTRICAL VEHICLE SPACES	
33 X 0.05 =	2 SPACES
LONG TERM BICYCLE STORAGE REQUIREMENTS (OMC 18.38. TABLE 38.01):	
(31) STUDIOS @ 0 STORAGE SPACE PER UNIT =	0 SPACES
(20) ONE BEDROOMS @ 1 STORAGE SPACE PER UNIT =	20 SPACES
(3) TWO BEDROOMS @ 1 STORAGE SPACE PER UNIT =	3 SPACES
RETAIL 1,854 SF (UNDER 3000 SF = NOT REQUIRED)	0 SPACES
TOTAL FOR ALL THE SPACES PROVIDED =	23 SPACES
SHORT TERM BICYCLE STORAGE REQUIREMENTS (OMC 18.38. TABLE 38.01):	
(31) STUDIOS @ 1/10 UNITS, 2 MIN. =	3 SPACES
(20) ONE BEDROOMS @ 1/10 UNITS, 2 MIN. =	2 SPACES
(3) TWO BEDROOMS @ 1/10 UNITS, 2 MIN. =	2 SPACES
RETAIL 1,854 SF (UNDER 3000 SF = NOT REQUIRED)	0 SPACES
TOTAL FOR ALL THE SPACES PROVIDED =	7 SPACES



1 SITE PLAN
1" = 20'-0"



0' 4' 8' 16' 32'
1" = 20'-0"

515 LEGION
OLYMPIA, WA

CONCEPT DESIGN | 10/12/20

A101
SITE PLAN

0' 8' 16' 32'
1" = 20'-0"

