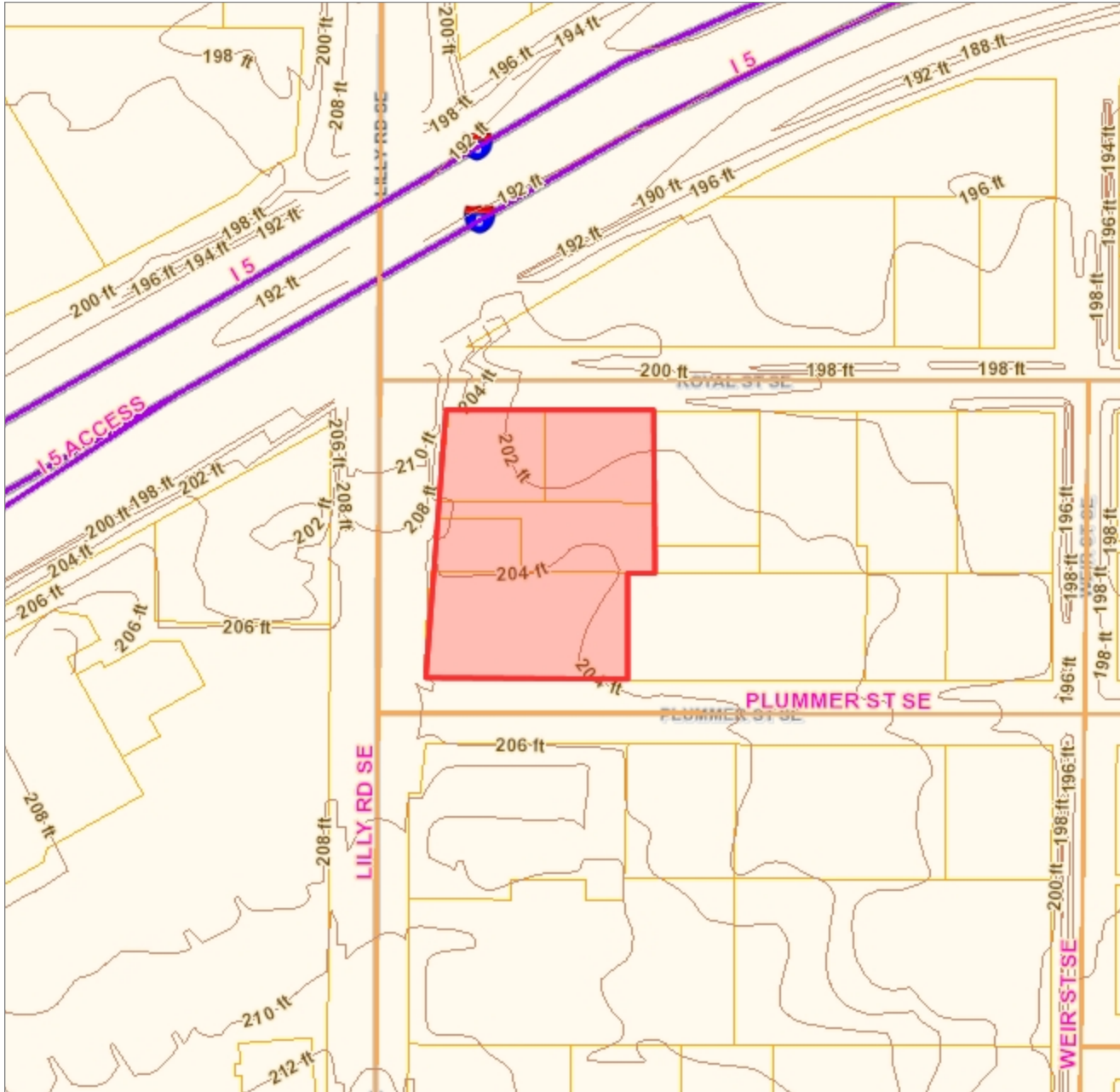


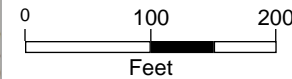
600 Lilly Contour Map



Legend

- Contours 2ft 1996 (NGVD 29)
- Roads
 - City
 - County
 - Government
 - Private
 - State
- Parcel Boundaries
- Roads - Major (Large Scale)
 - = <all other values>
 - = I 5 ACCESS; US 101 ACCESS; US 101 SB OFF RAMP
 - = I 5; US 101
- Roads (Large Scale)
- + Railroads
- County Border
- Olympia Municipal Airport
- Water Bodies (River - Large Scale)
- Water Bodies (Other)
- Parks
- Cities
- Capital Forest
- County Background
- Roads - Major
 - = <all other values>
 - = I 5 ACCESS; US 101 ACCESS; US 101 SB OFF RAMP
 - = I 5; US 101
- Roads

Scale 1: 2,684



Map Created Using GeoData Public Website

Published: 10/28/2021

Note:

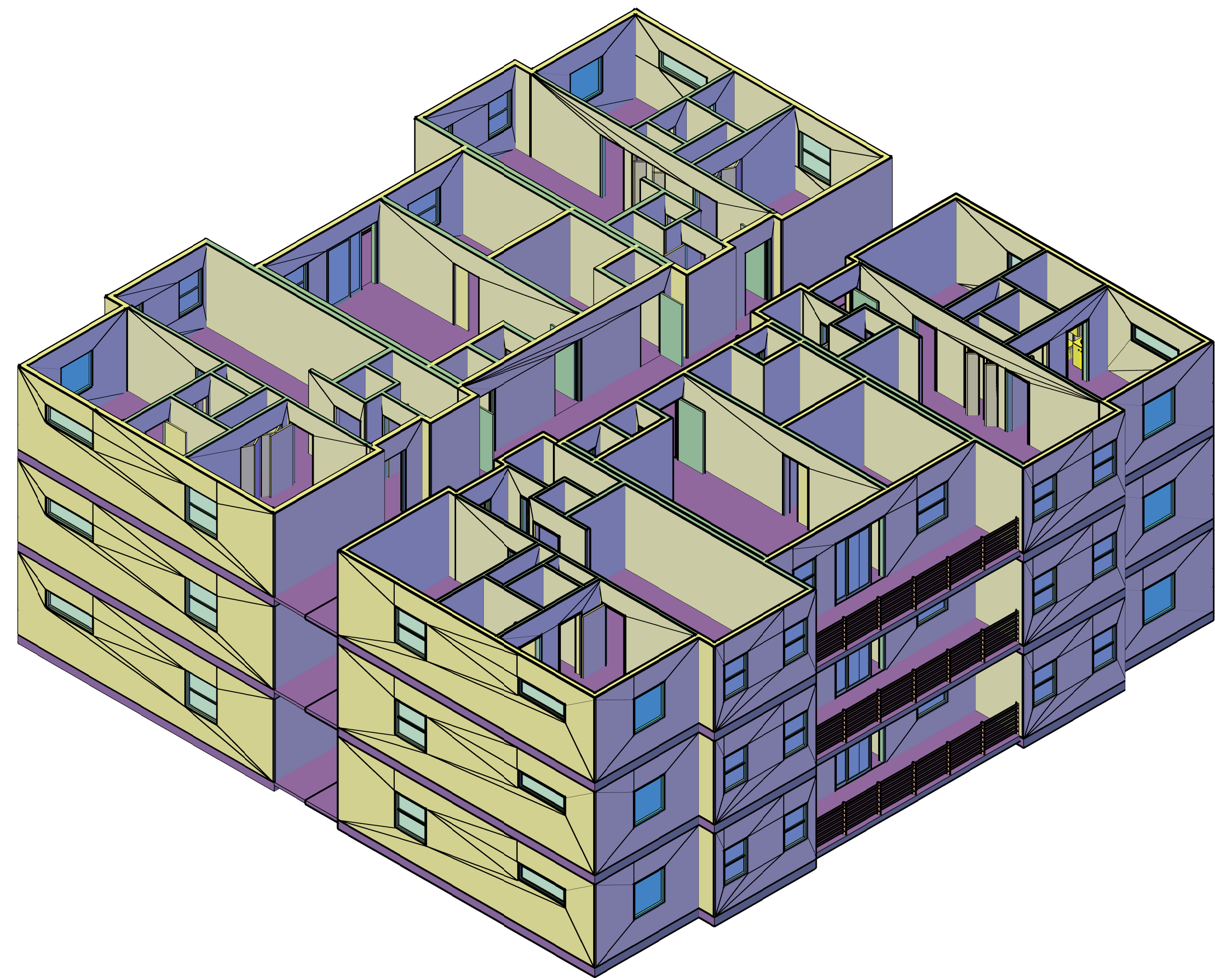


The information included on this map has been compiled by Thurston County staff from a variety of sources and is subject to change without notice. Additional elements may be present in reality that are not represented on the map. Ortho-photos and other data may not align. The boundaries depicted by these datasets are approximate. This document is not intended for use as a survey product. ALL DATA IS EXPRESSLY PROVIDED 'AS IS' AND 'WITH ALL FAULTS'. Thurston County makes no representations or warranties, express or implied, as to accuracy, completeness, timeliness, or rights to the use of such information. In no event shall Thurston County be liable for direct, indirect, incidental, consequential, special, or tort damages of any kind, including, but not limited to, lost revenues or lost profits, real or anticipated, resulting from the use, misuse or reliance of the information contained on this map. If any portion of this map or disclaimer is missing or altered, Thurston County removes itself from all responsibility from the map and the data contained within. The burden for determining fitness for use lies entirely with the user and the user is solely responsible for understanding the accuracy limitation of the information contained in this map. Authorized for 3rd Party reproduction for personal use only.

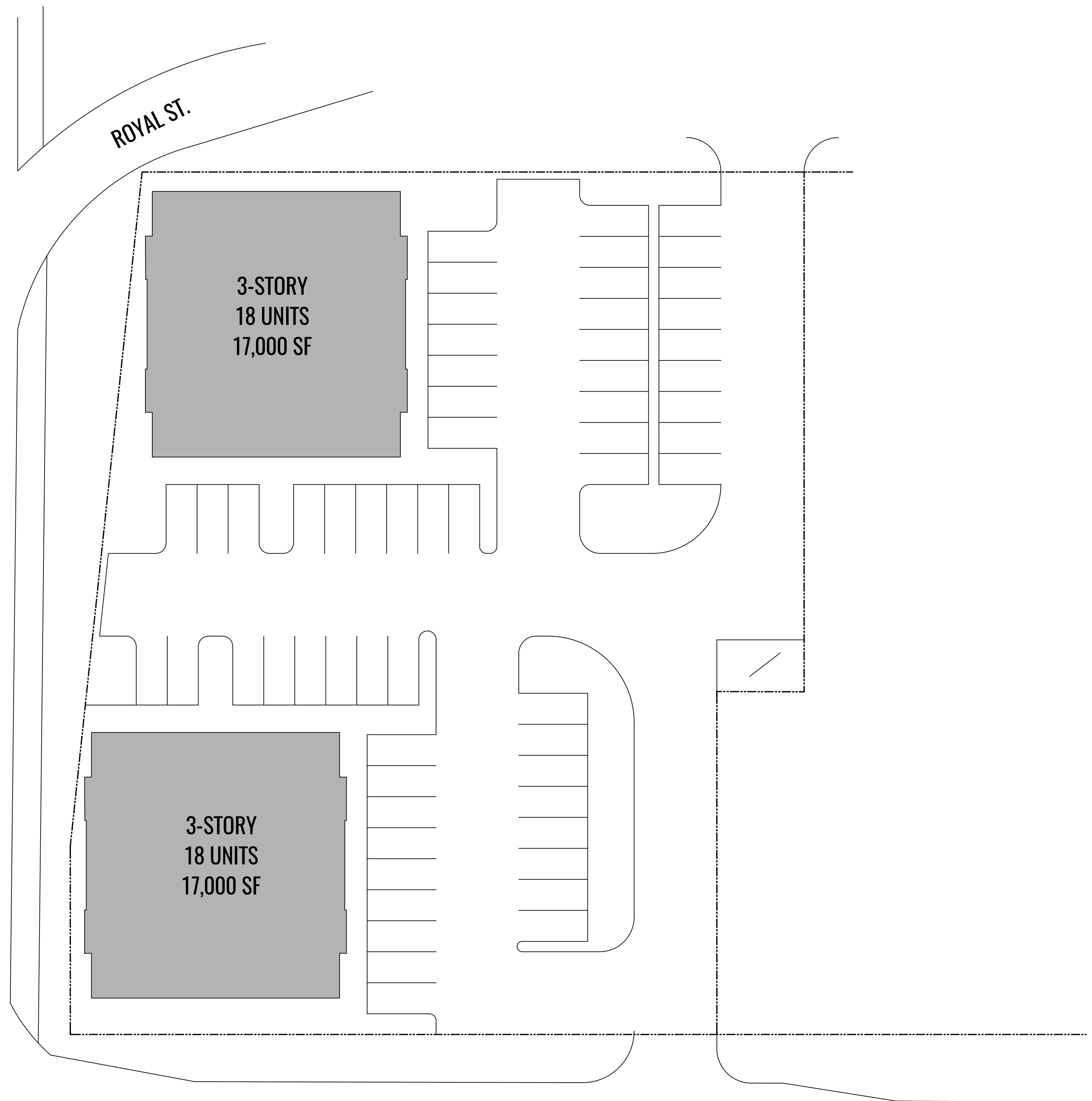
Search for owner, address, or parcel

Search





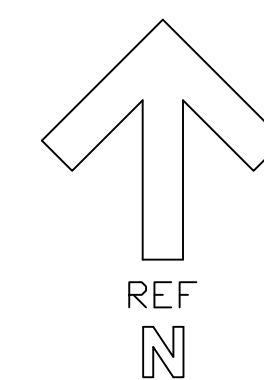
LILLY ROAD



PLUMMER STREET

CONCEPTUAL SITE PLAN

SCALE: 1" = 20'-0"



NOTES

CAPITAL DEVELOPMENT COMPANY
 PLANNING - DEVELOPMENT - MANAGEMENT

360.491.6850 capdevco.com
 PO BOX 3487 - LACEY, WA 98509

REVISIONS

DATE

CONCEPTUAL SITE PLAN
 608 LILLY ROAD SE

608 LILLEY ROAD SE - OLYMPIA, WA

Project: 608 LILLY
 Date: 10.22.21
 Scale: As Noted

SITE